

# Tokyo Seimitsu Co., Ltd.



## Reference Data for FY2006 Earnings

### Contents

#### **I. Consolidated**

1. Operating Results
2. Sales by Product Group
3. Order Backlog
4. R&D, Capex & Depreciation
5. Balance Sheet
6. Per Share Indexes, ROE
7. Quarterly Orders
8. Quarterly Sales

#### **II. Non-Consolidated**

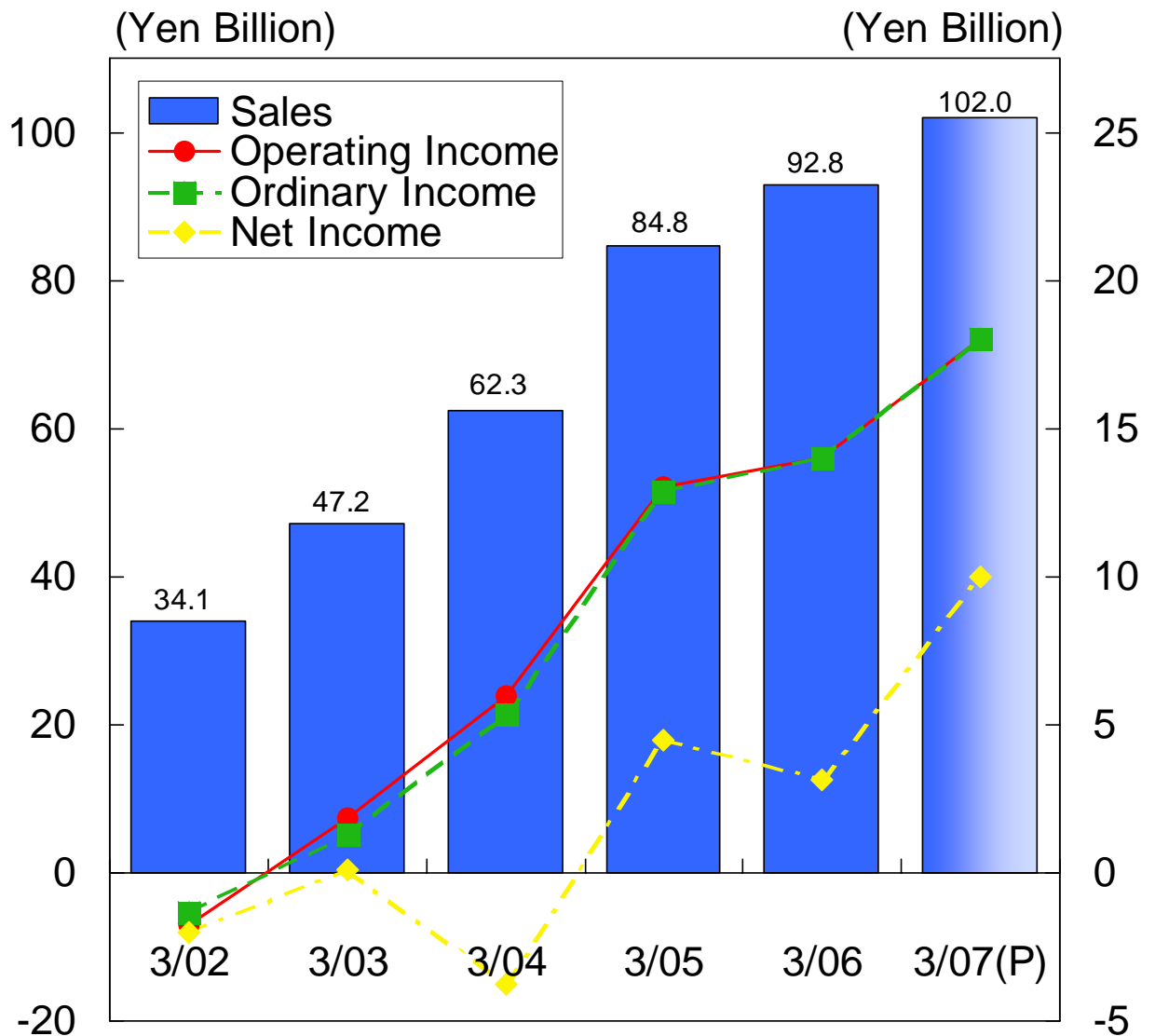
1. Operating Results
2. Sales by Product Group
3. Order Backlog
4. R&D, Capex & Depreciation
5. Balance Sheet
6. Per Share Indexes, ROE
7. Quarterly Orders
8. Quarterly Sales

May 17, 2006

# 1. Operating Results (Consolidated)



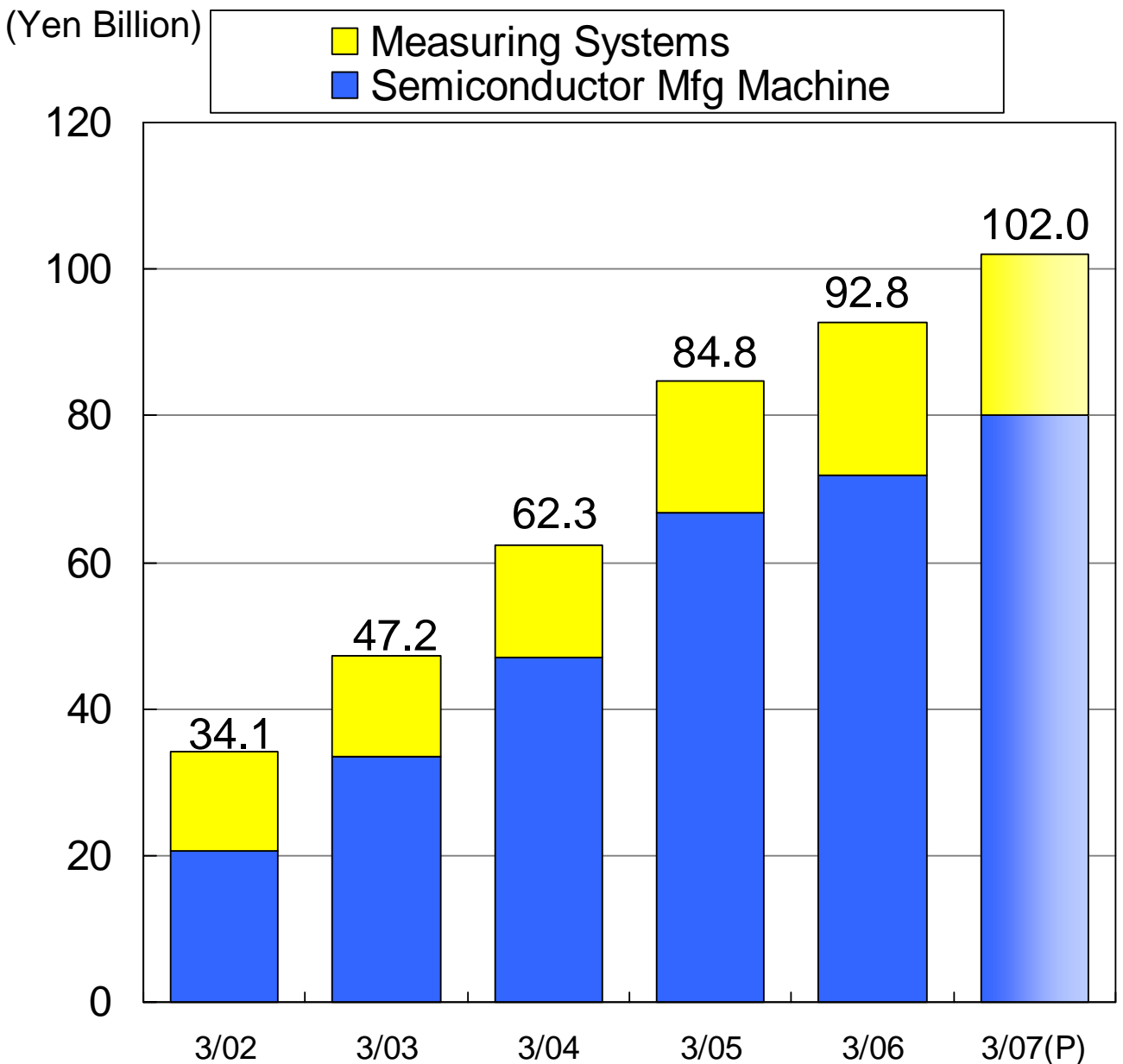
	3/02	3/03	3/04	3/05	3/06	Interim 9/06(P)	Full Year 3/07(P)
Sales	34,064	47,171	62,324	84,750	92,845	51,000	102,000
Operating Income	-1,757	1,860	5,947	13,051	13,991	9,000	18,000
Ordinary Income	-1,336	1,259	5,328	12,885	14,031	9,000	18,000
Net Income	-2,026	74	-3,783	4,459	3,125	5,000	10,000



# 2. Sales by Product Group (Consolidated)



	3/02	3/03	3/04	3/05	3/06	Interim 9/06(P)	Full Year 3/07(P)
Semiconductor Mfg. Machine	20,607	33,561	47,045	66,669	71,825	40,000	80,000
Measuring Systems	13,457	13,610	15,279	18,081	21,020	11,000	22,000
<b>Total</b>	<b>34,064</b>	<b>47,171</b>	<b>62,325</b>	<b>84,750</b>	<b>92,845</b>	<b>51,000</b>	<b>102,000</b>

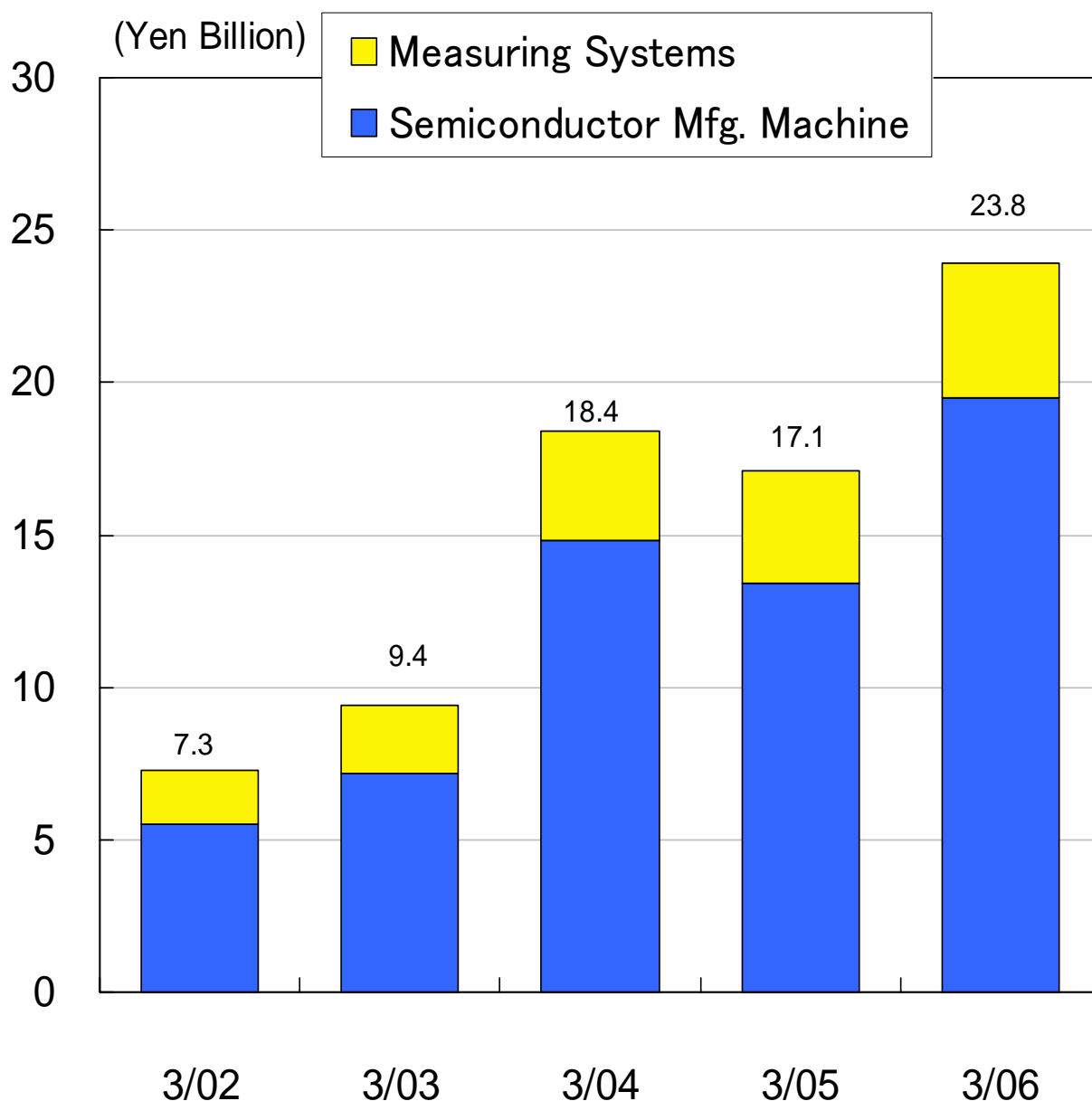


# 3. Order Backlog (Consolidated)



(Yen Million)

	3/02	3/03	3/04	3/05	3/06
Semiconductor Manufacturing Machine	5,533	7,212	14,821	13,401	19,450
Measuring Systems	1,810	2,207	3,565	3,691	4,355
<b>Total</b>	<b>7,344</b>	<b>9,420</b>	<b>18,386</b>	<b>17,092</b>	<b>23,805</b>

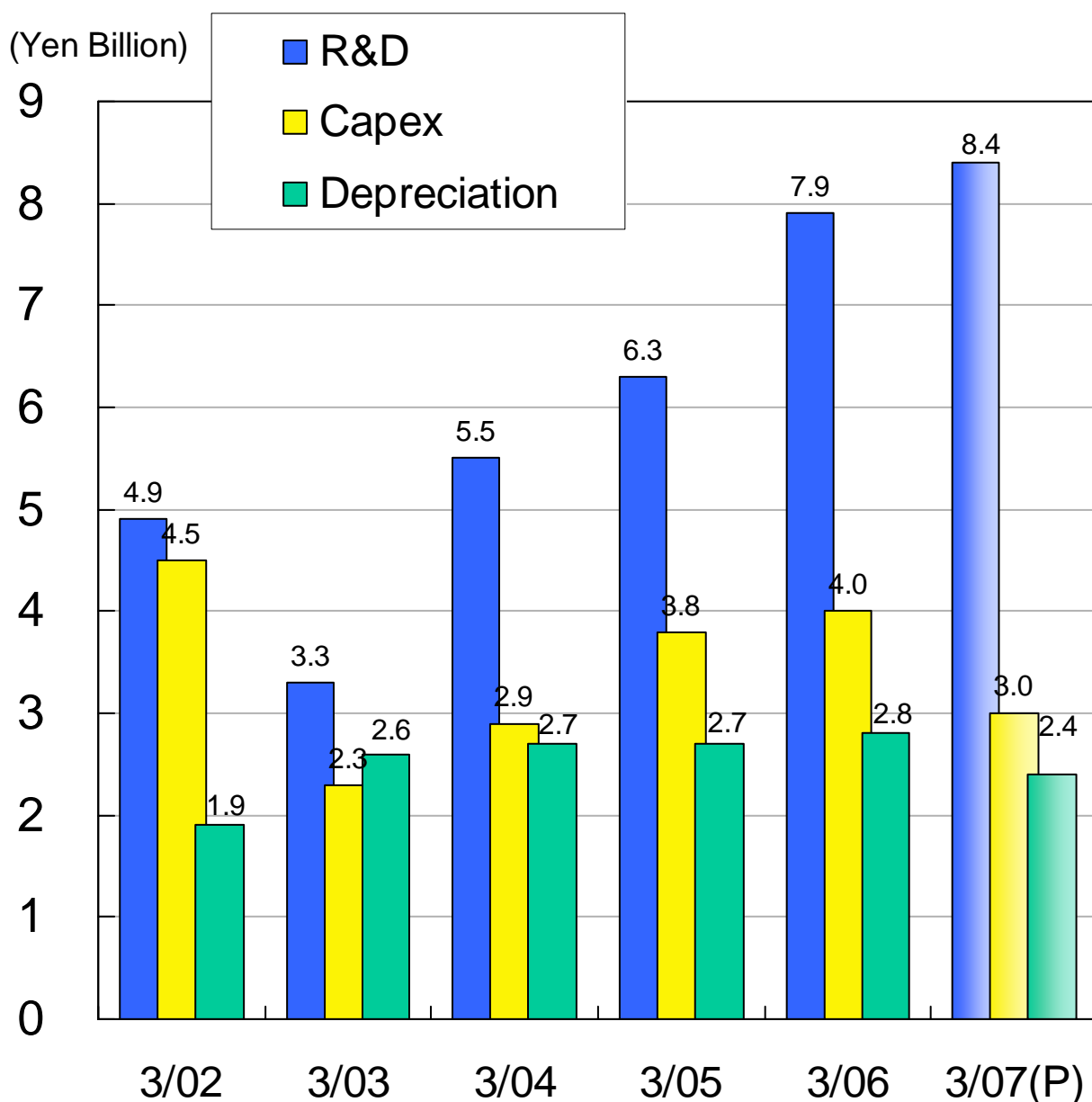


# 4. R&D, Capex & Depreciation (Consolidated)



(Yen Million)

	3/02	3/03	3/04	3/05	3/06	3/07(P)
R&D	4,860	3,291	5,531	6,301	7,920	8,440
Capex	4,521	2,333	2,904	3,771	3,978	3,000
Depreciation	1,860	2,579	2,749	2,732	2,768	2,440



# 5. Balance Sheet

## (Consolidated)



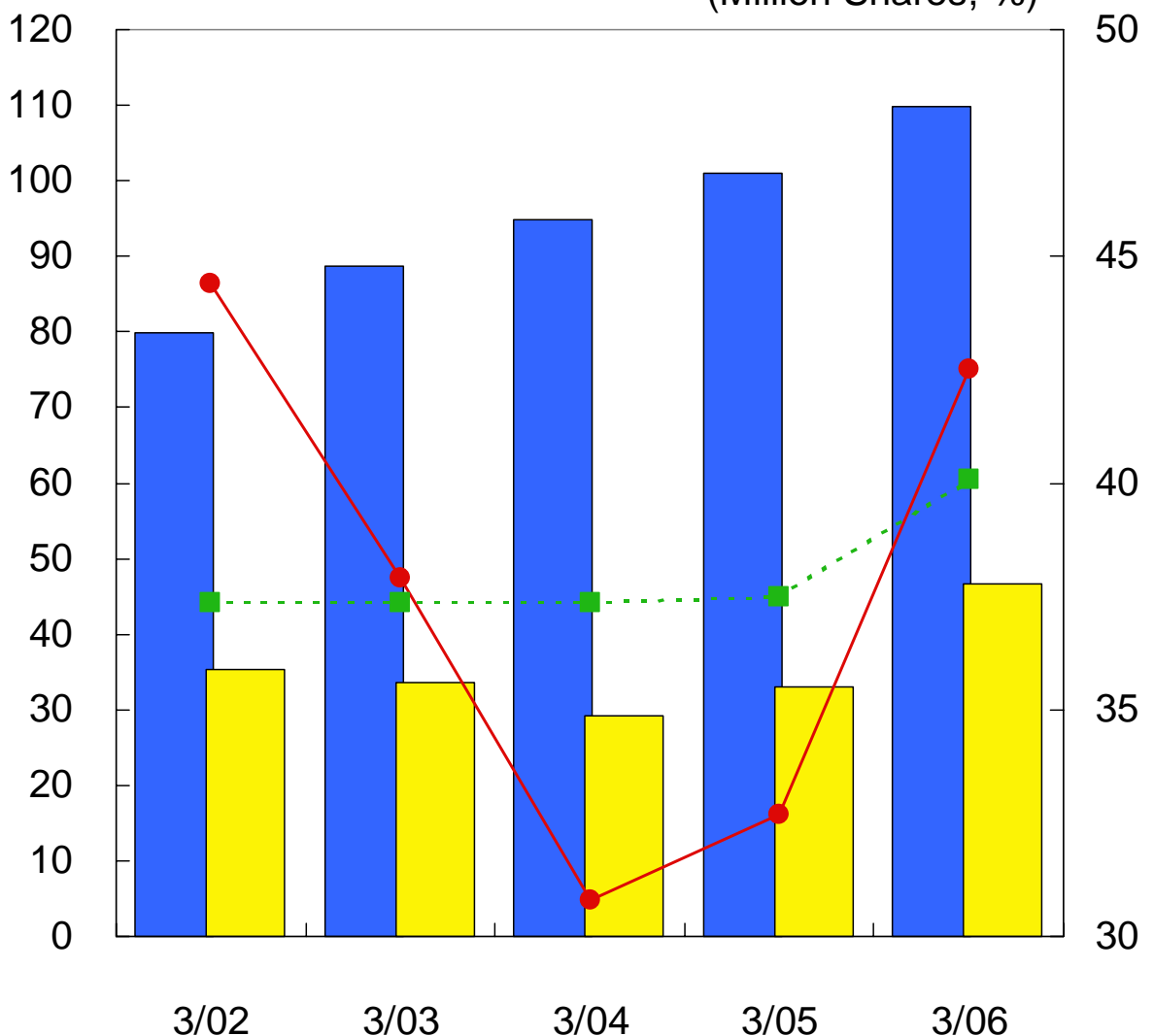
(Yen Million, Share)

	3/02	3/03	3/04	3/05	3/06
Total Assets	79,865	88,669	94,893	100,993	109,875
Shareholders' Equity	35,423	33,645	29,183	33,003	46,703
Outstanding Shares	37,370,643	37,355,873	37,354,830	37,495,725	40,073,746
Shareholders' Equity Ratio(%)	44.4%	37.9%	30.8%	32.7%	42.5%



(Yen Billion)

(Million Shares, %)

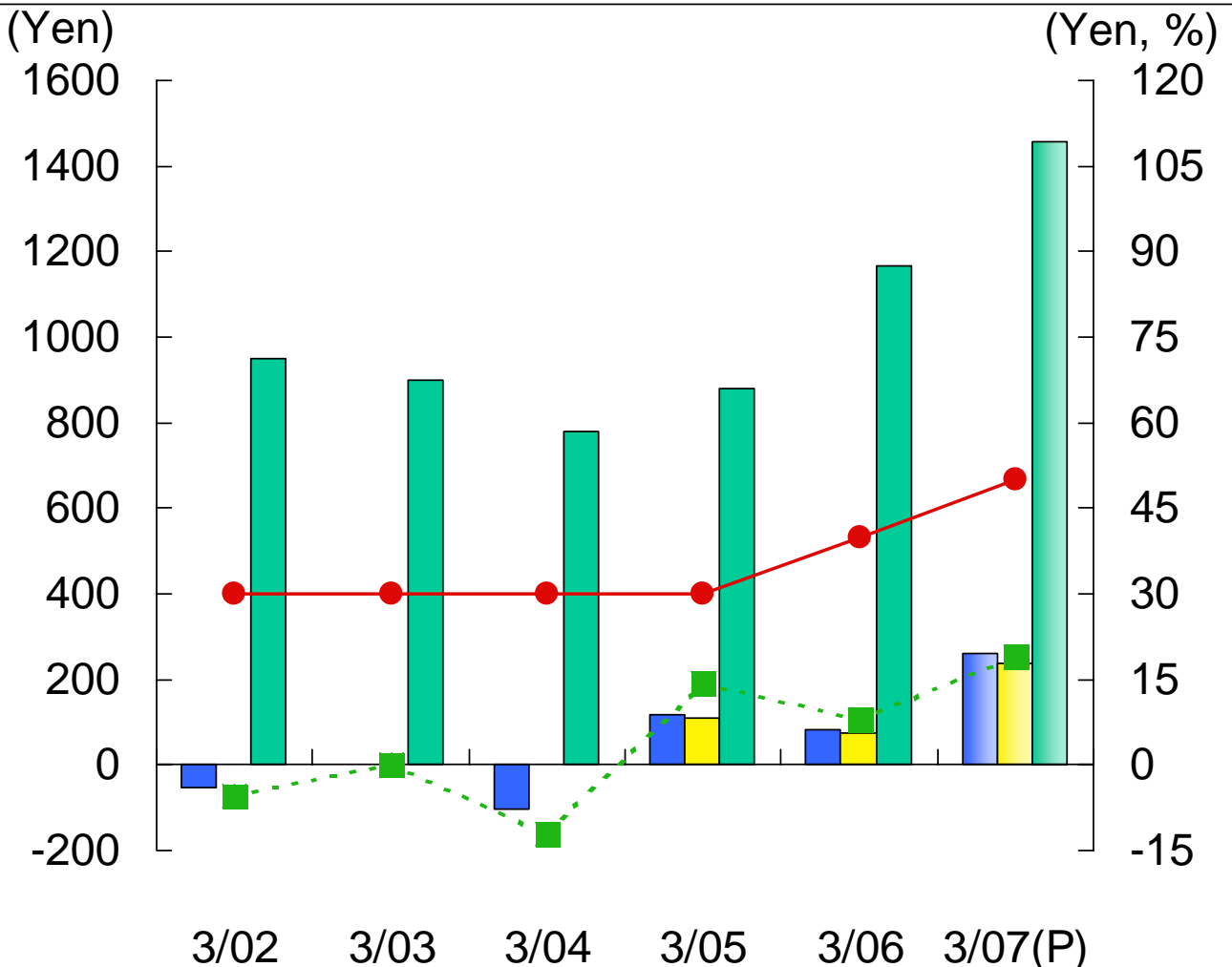
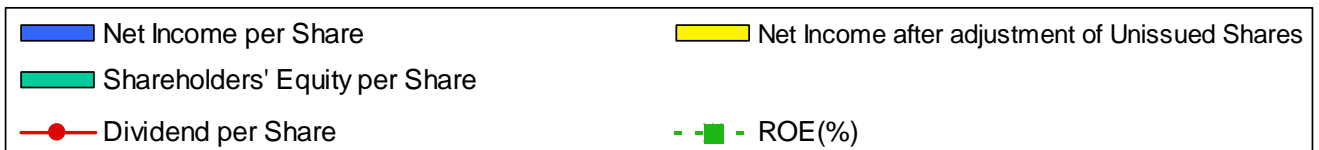


# 6. Per Share indexes, & ROE (Consolidated)



(Share, Yen)

	3/02	3/03	3/04	3/05	3/06	3/07(P)
Outstanding Shares	37,370,643	37,355,873	37,354,830	37,495,725	40,073,746	40,073,746
Net Income per Share	-54.21	1.64	-101.67	118.82	80.77	259.26
EPS after adjust. of Unissued Share	-	1.64	-	108.75	74.02	237.59
Shareholders' Equity per Share	947.90	900.32	780.87	879.93	1,165.07	1,456.95
Dividend per Share	30	30	30	30	40	50
ROE(%)	-5.5%	0.2%	-12.0%	14.3%	7.8%	19.0%



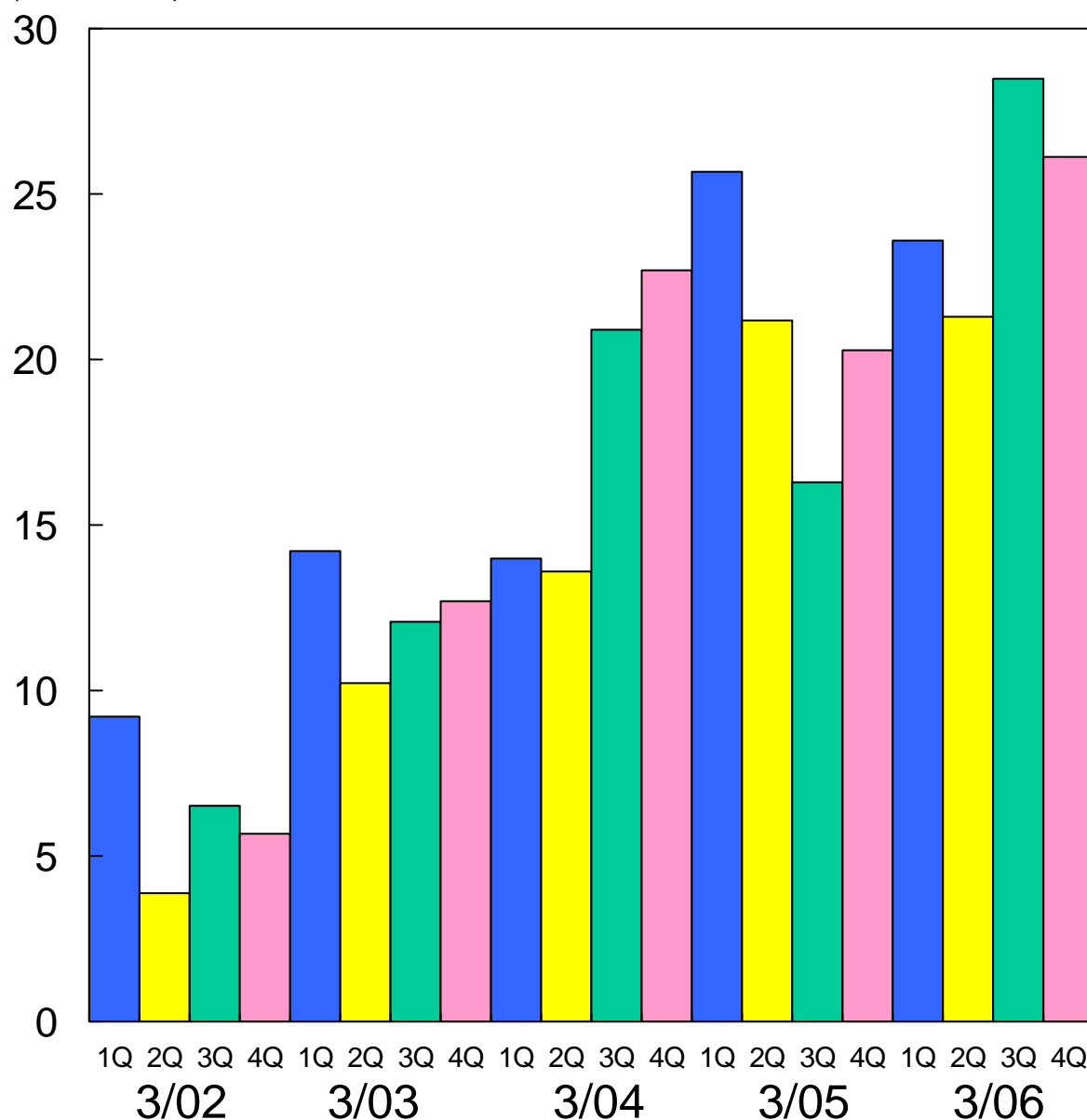
# 7. Quarterly Orders (Consolidated)



(Yen Million)

	3/02	3/03	3/04	3/05	3/06
1Q	9,161	14,220	14,062	25,740	23,637
2Q	3,855	10,234	13,631	21,189	21,320
3Q	6,530	12,101	20,851	16,267	28,453
4Q	5,723	12,693	22,744	20,260	26,148

(Yen Billion)



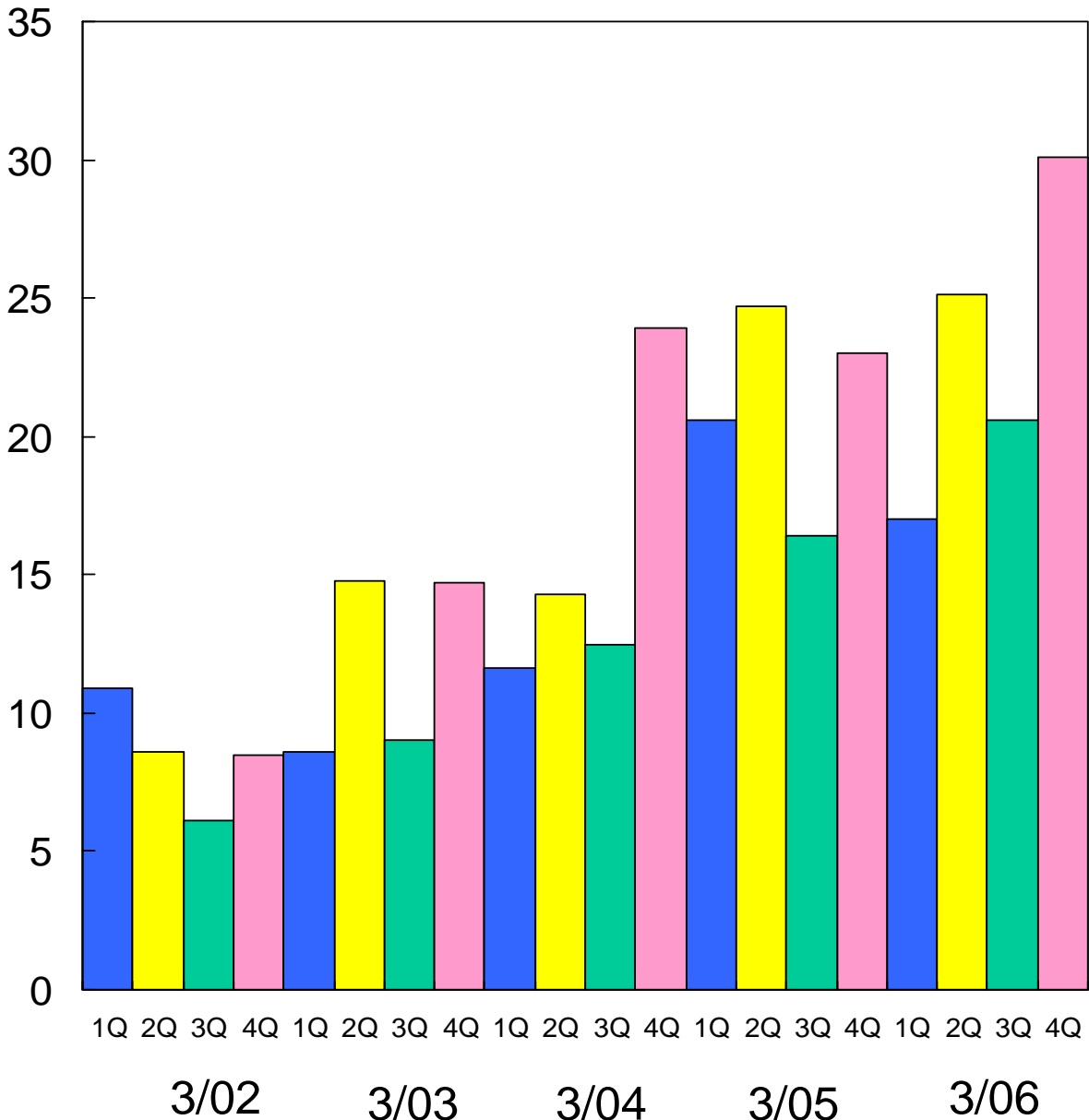
# 8. Quarterly Sales (Consolidated)



(Yen Million)

	3/02	3/03	3/04	3/05	3/06
1Q	10,926	8,562	11,586	20,637	16,987
2Q	8,581	14,832	14,323	24,704	25,097
3Q	6,091	9,049	12,502	16,395	20,637
4Q	8,467	14,729	23,914	23,014	30,124

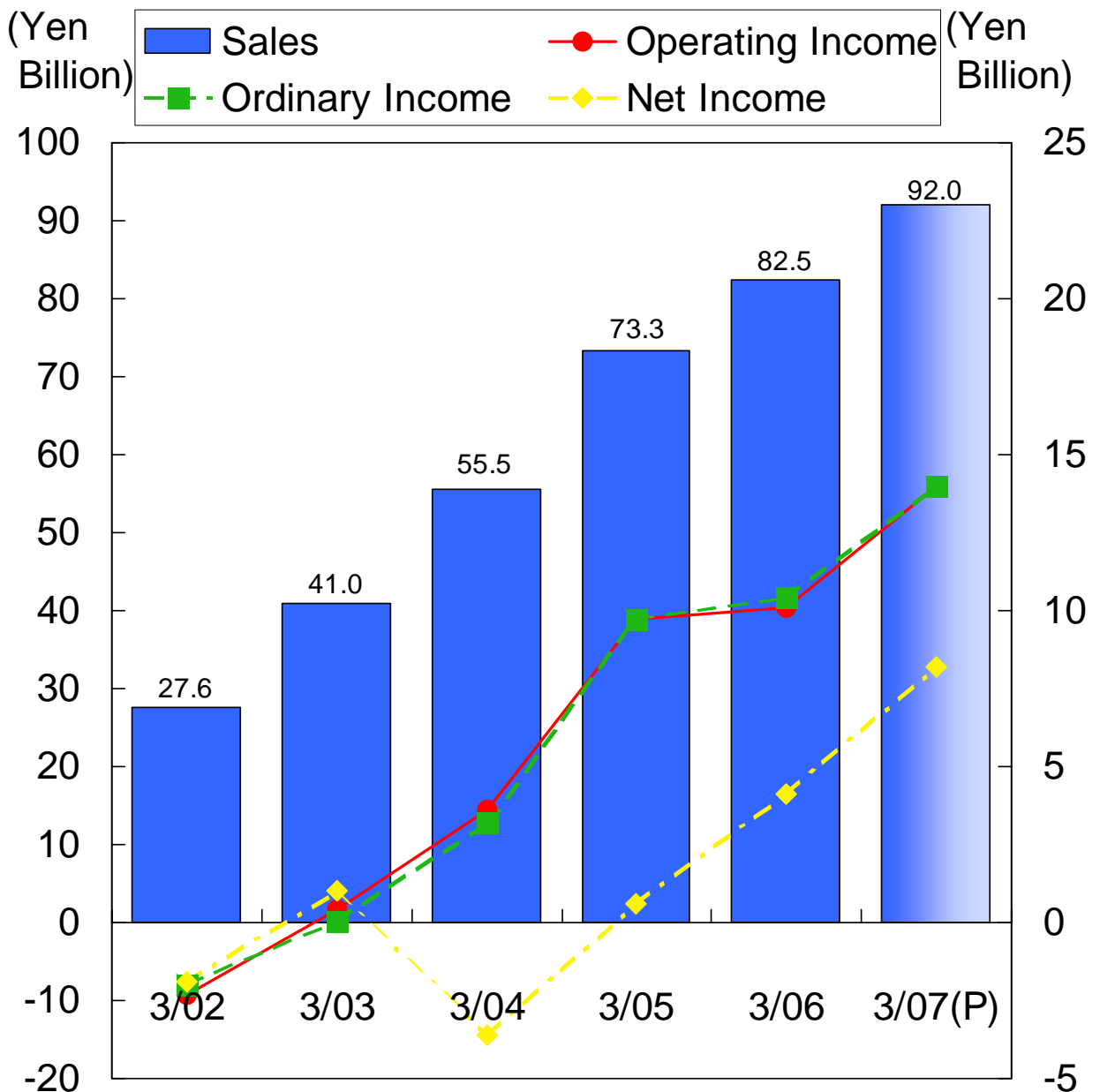
(Yen Billion)



# 1. Operating Results (Non-Consolidated)



	3/02	3/03	3/04	3/05	3/06	Interim 9/06(P)	Full Year 3/07(P)
Sales	27,643	40,996	55,549	73,337	82,540	46,000	92,000
Operating Income	-2,304	406	3,616	9,724	10,136	7,000	14,000
Ordinary Income	-1,968	54	3,243	9,677	10,423	7,000	14,000
Net Income	-1,850	1,032	-3,592	605	2,414	4,100	8,200



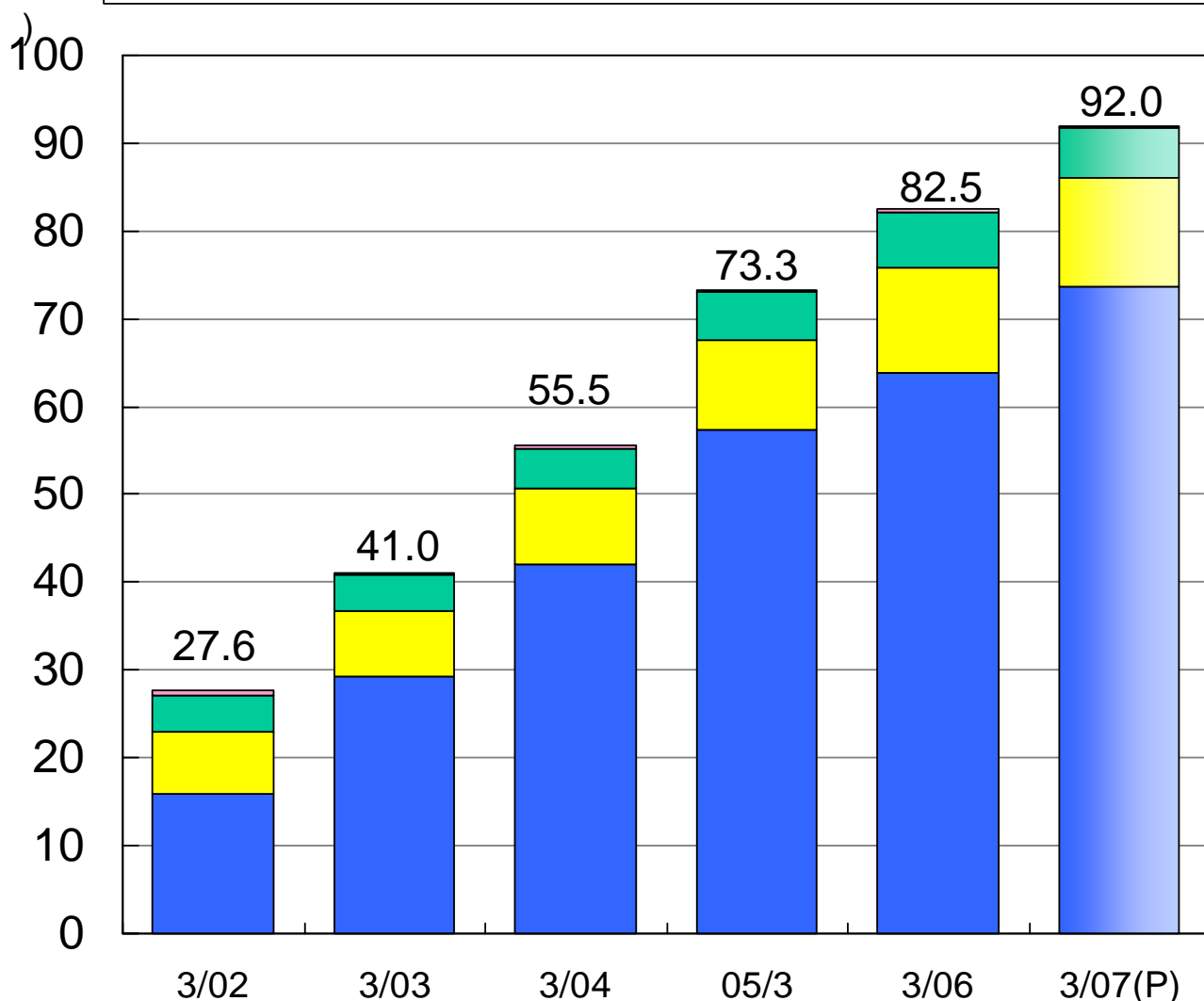
# 2. Sales by Product Group (Non- Consolidated)



	3/02	3/03	3/04	3/05	3/06	Interim 9/06	Full Year 3/07(P)
Semiconductor Mfg. Machine	15,897	29,154	42,114	57,335	63,788	36,800	73,600
(Overseas Sales)	(8,240)	(17,037)	(24,351)	(34,520)	(38,881)	-	-
Industrial Measuring Machine	6,969	7,631	8,513	10,257	12,117	6,200	12,400
(Overseas Sales)	(1,083)	(1,446)	(1,487)	(1,959)	(2,082)	-	-
In-line Measuring Machine	4,278	3,959	4,559	5,442	6,266	2,900	5,800
(Overseas Sales)	(283)	(256)	(242)	(380)	(299)	-	-
Others	498	251	362	303	368	100	200
(Overseas Sales)	(43)	(28)	(17)	(25)	(31)	-	-
<b>Total</b>	<b>27,643</b>	<b>40,996</b>	<b>55,549</b>	<b>73,337</b>	<b>82,540</b>	<b>46,000</b>	<b>92,000</b>
(Total Overseas Sales)	(9,651)	(18,768)	(26,097)	(36,884)	(41,294)	-	-

(Yen Billion)

■ Semiconductor Mfg. Mach.    ■ Industrial Msg. Mach.  
■ In-line Msg. Mach.            ■ Others



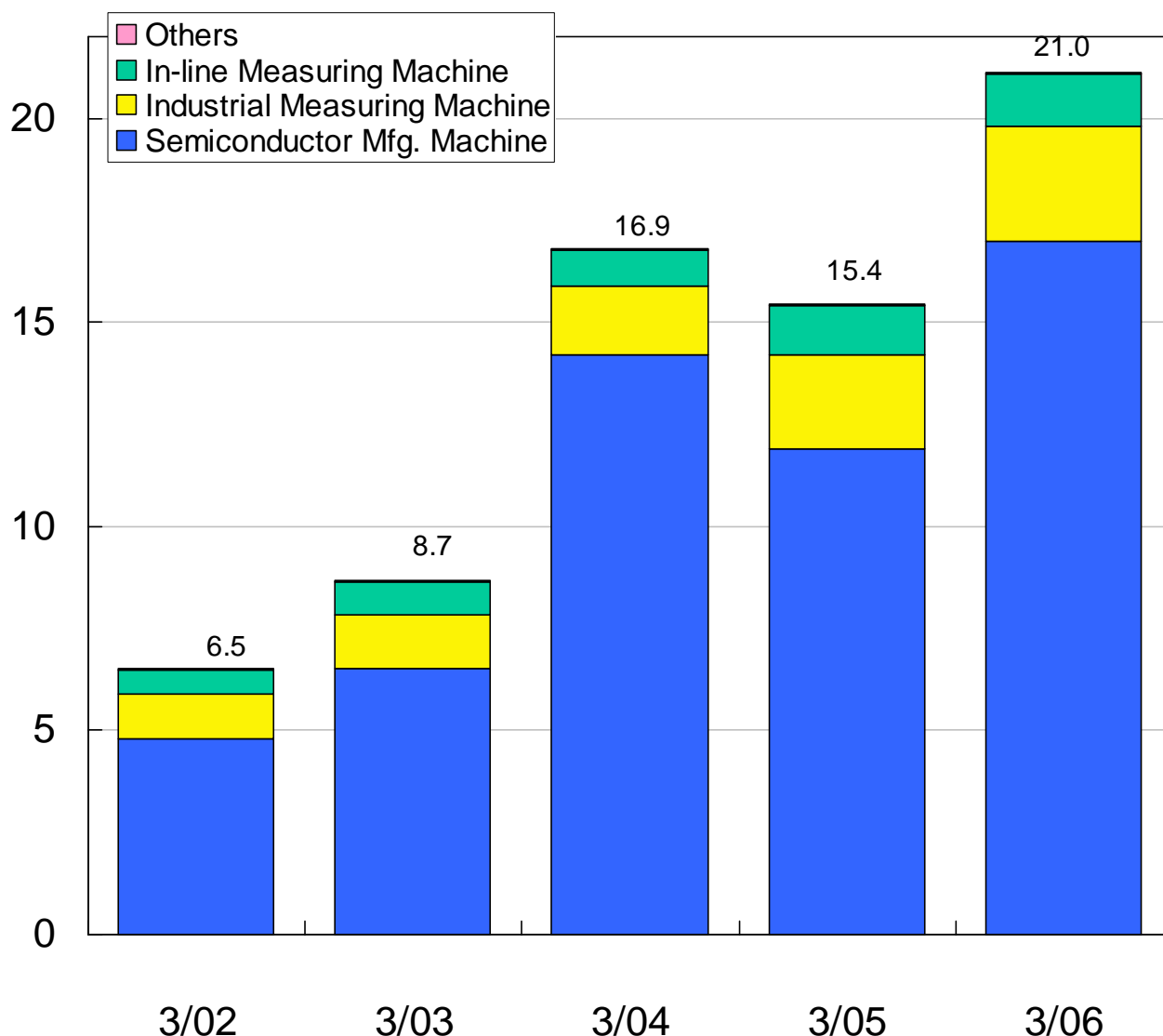
# 3. Order Backlog (Non-Consolidated)



(Yen Million)

	3/02	3/03	3/04	3/05	3/06
Semiconductor Mfg. Machine	4,838	6,524	14,237	11,884	16,968
Industrial Measuring Machine	1,092	1,325	1,713	2,276	2,769
In-line Measuring Machine	576	806	875	1,207	1,285
Others	16	51	37	43	23
<b>Total</b>	<b>6,523</b>	<b>8,708</b>	<b>16,863</b>	<b>15,410</b>	<b>21,045</b>

(Yen Billion)



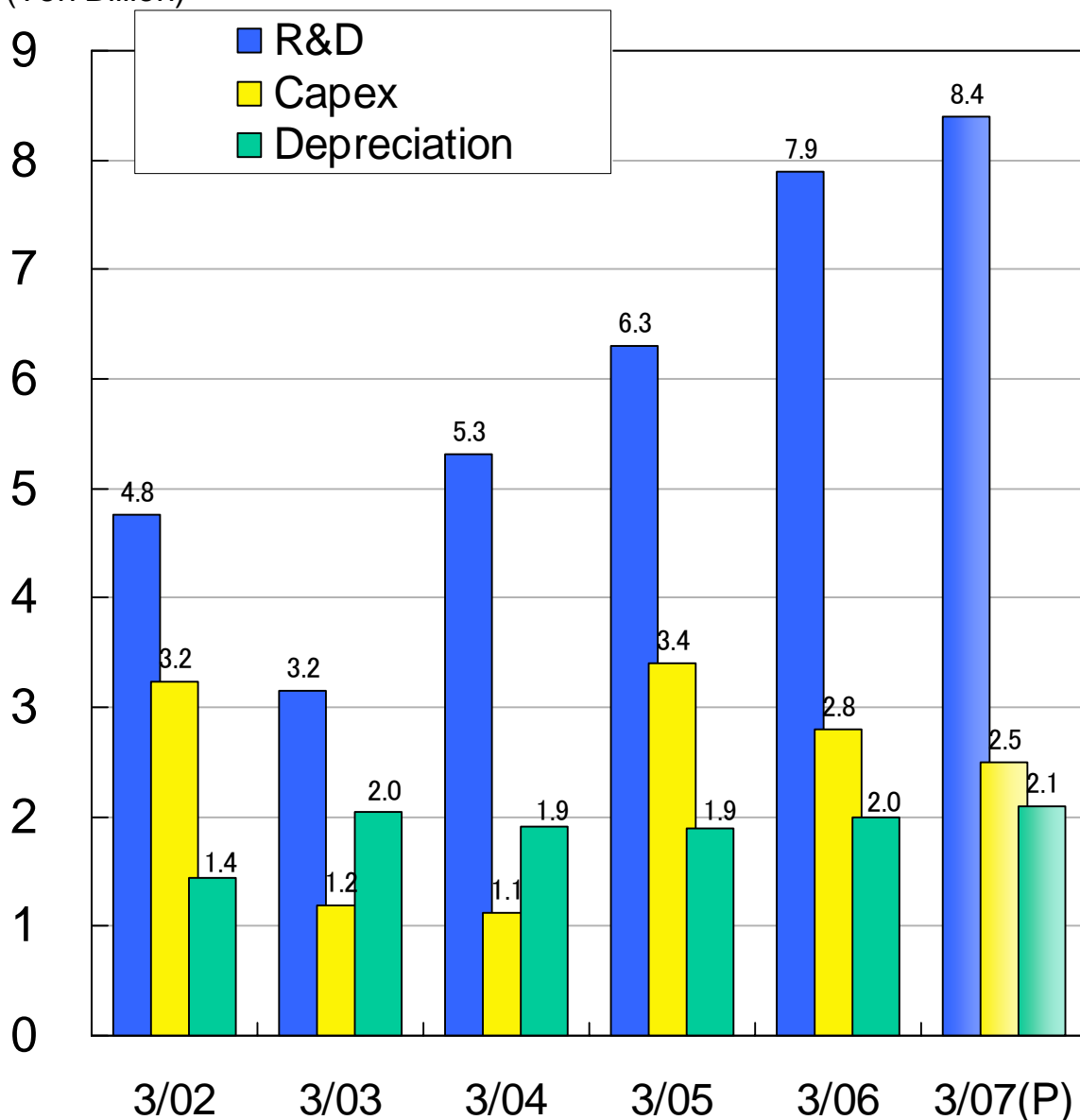
# 4. R&D, Capex & Depreciation (Non-Consolidated)



(yen Million)

	3/02	3/03	3/04	3/05	3/06	3/07(P)
R&D	4,758	3,156	5,321	6,263	7,904	8,420
Capex	3,242	1,186	1,124	3,435	2,814	2,500
Depreciation	1,441	2,042	1,907	1,922	2,065	2,060

(Yen Billion)

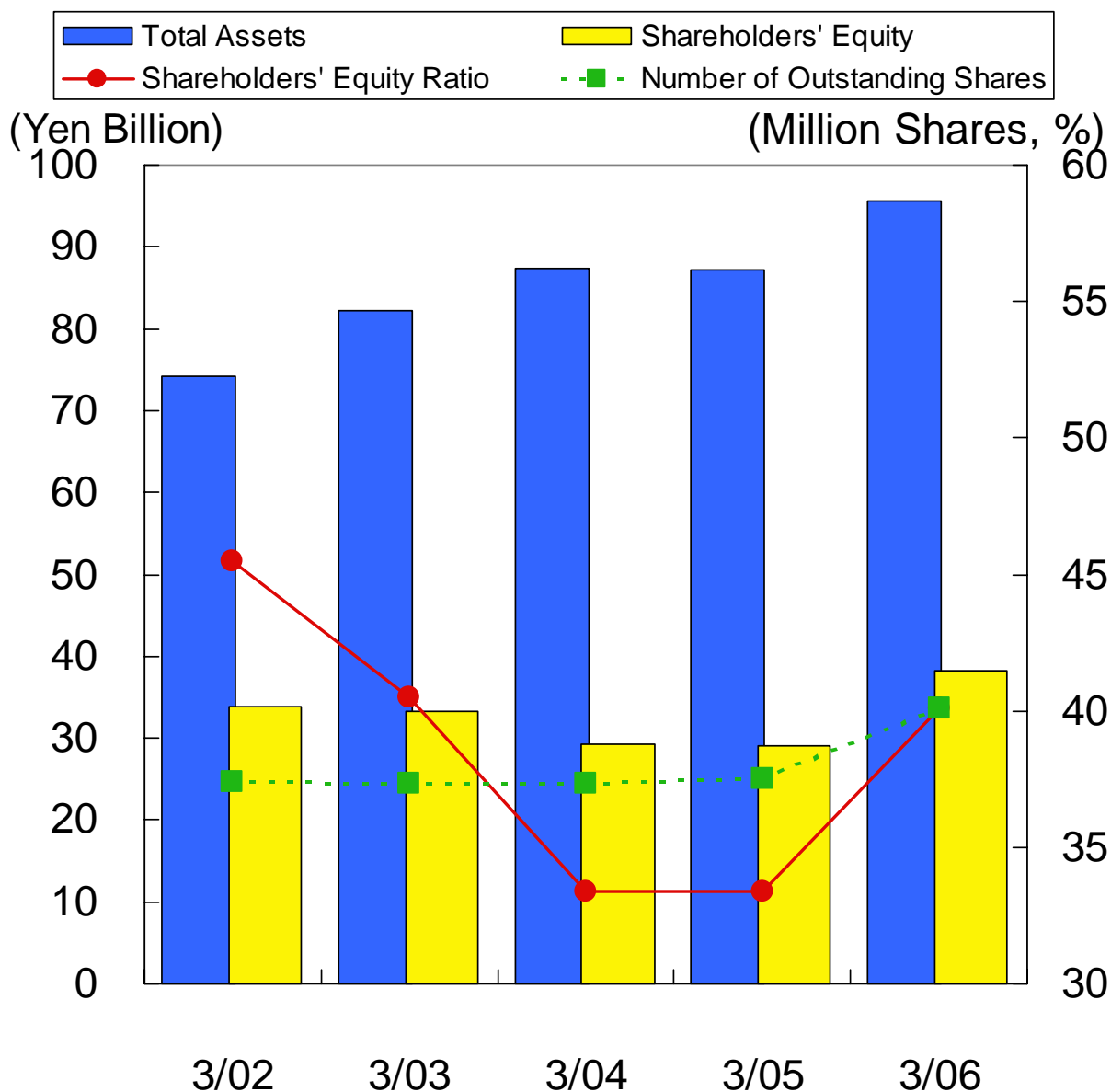


# 5. Balance Sheet (Non-Consolidated)



(Yen Million, Share)

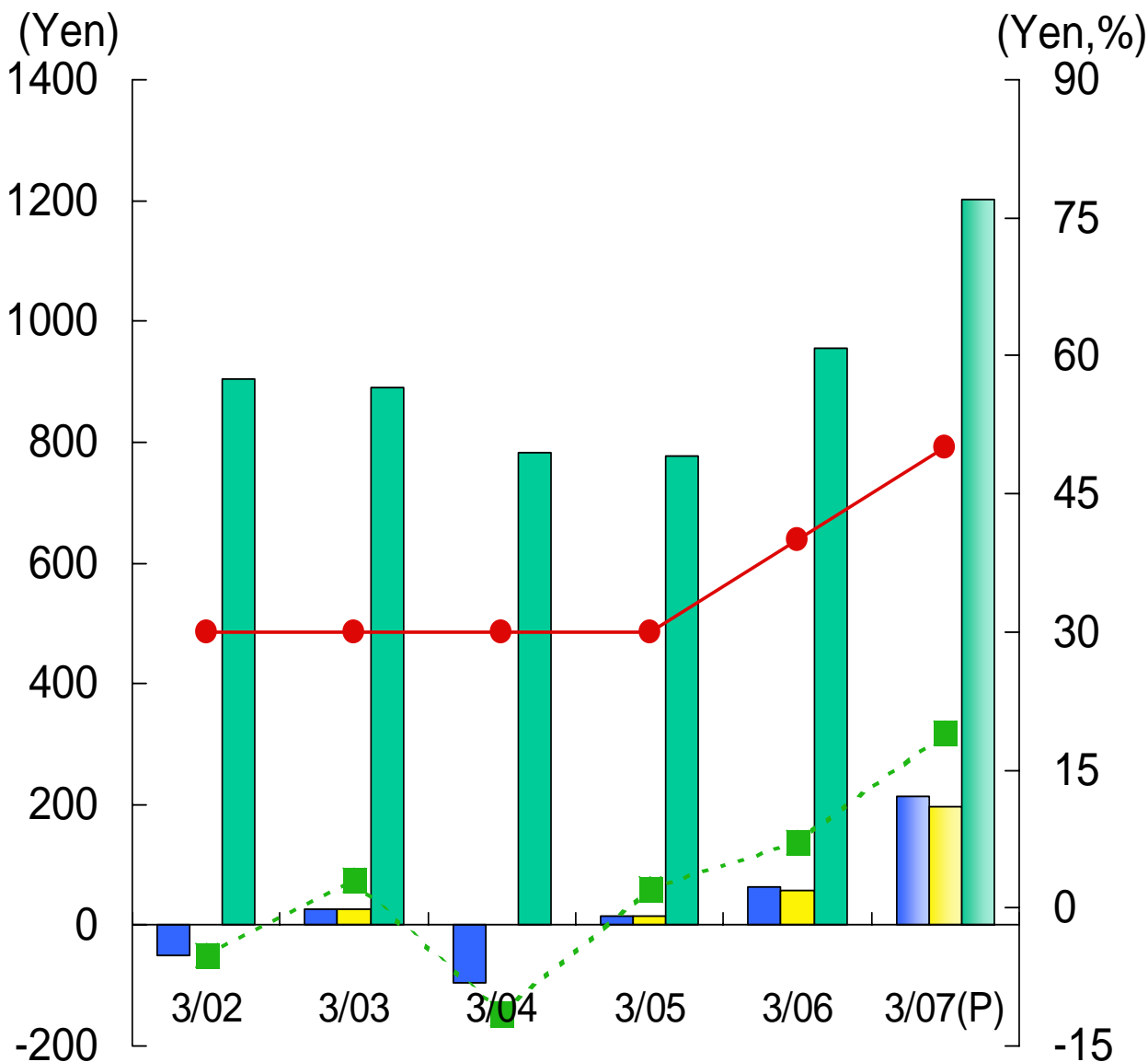
	3/02	3/03	3/04	3/05	3/06
Total Assets	74,130	82,163	87,385	87,161	95,589
Shareholders' Equity	33,752	33,247	29,204	29,088	38,295
Number of Outstanding Shares	37,370,643	37,355,873	37,354,830	37,495,725	40,073,746
Shareholders' Equity Ratio	45.5%	40.5%	33.4%	33.4%	40.1%



# 6. Per Share indexes, & ROE (Non-Consolidated)



	(Share, Yen)					
	3/02	3/03	3/04	3/05	3/06	3/07(P)
Number of Outstanding Shares	37370643	37355873	37354830	37495725	40073746	40073746
Net Income per Share	-49.5	27.63	-96.16	16.16	62.67	212.83
EPS after adjustment of unissued shares	-	27.59	-	14.79	57.43	195.05
Shareholders' Equity per Share	903.17	890.03	781.8	775.78	955.63	1202.78
Dividend per Share	30	30	30	30	40	50
ROE(%)	-5.2%	3.1%	-11.5%	2.1%	7.2%	19.0%



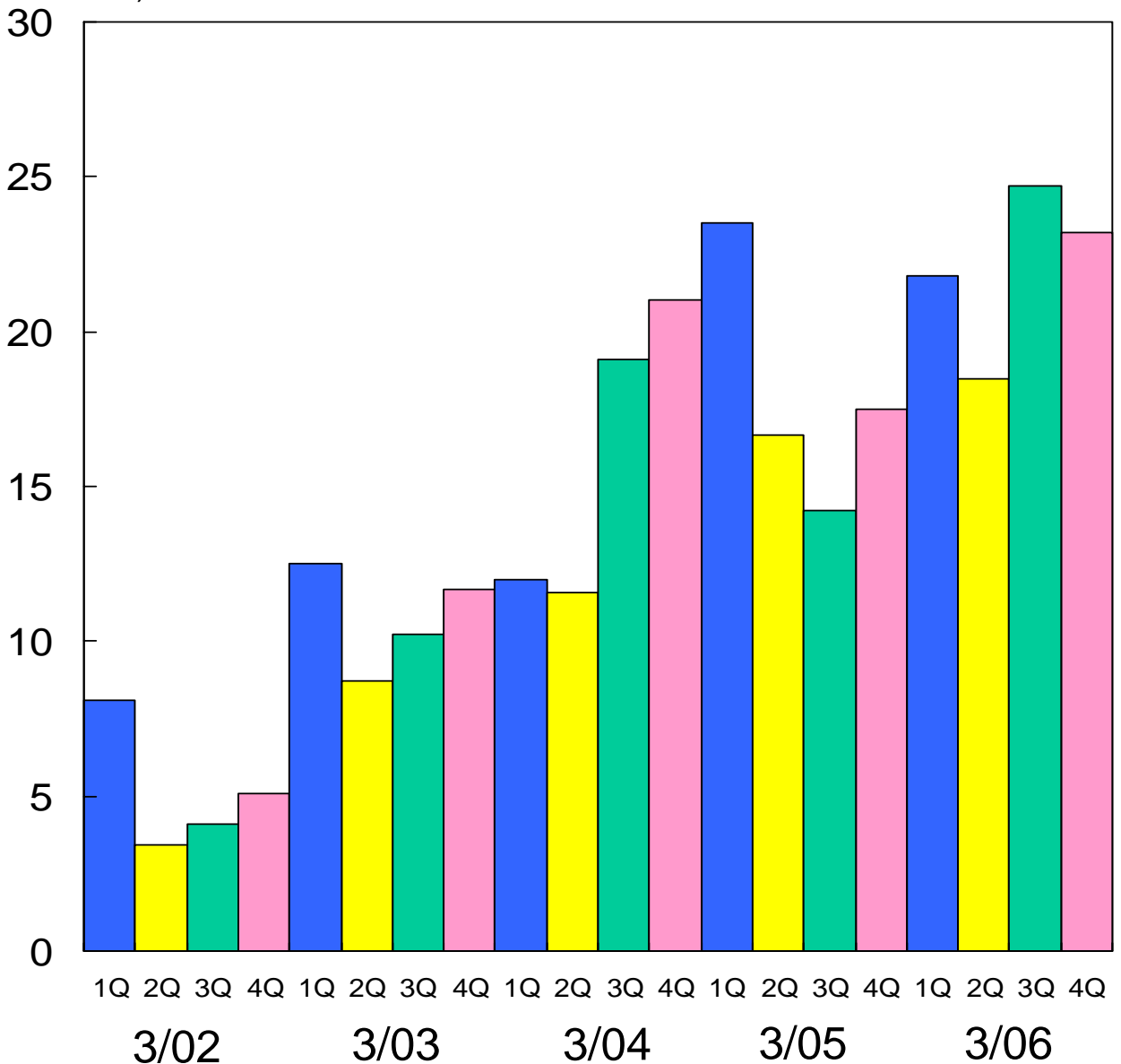
# 7. Quarterly Orders (Non-Consolidated)



(Yen Million)

	3/02	3/03	3/04	3/05	3/06
1Q	8,085	12,537	11,959	23,455	21,797
2Q	3,408	8,695	11,617	16,652	18,541
3Q	4,050	10,220	19,086	14,236	24,662
4Q	5,056	11,730	21,041	17,541	23,175

(Yen Billion)



# 8. Quarterly Sales (Non-Consolidated)



(Yen Million)

	3/02	3/03	3/04	3/05	3/06
1Q	9,070	6,673	10,417	17,736	14,812
2Q	7,106	12,877	12,688	21,770	22,747
3Q	4,490	7,706	10,692	13,550	18,282
4Q	6,977	13,741	21,752	20,281	26,699

(Yen Billion)

