

# Tokyo Seimitsu Co., Ltd.



## Reference Data for FY2005 Interim Earnings

### Contents

#### **I. Consolidated**

1. Operating Results
2. Sales by Product Group
3. Order Backlog
4. R&D, Capex & Depreciation
5. Balance Sheet
6. Per Share Indexes, ROE
7. Quarterly Orders
8. Quarterly Sales

#### **II. Non-Consolidated**

1. Operating Results
2. Sales by Product Group
3. Order Backlog
4. R&D, Capex & Depreciation
5. Balance Sheet
6. Per Share Indexes, ROE
7. Quarterly Orders
8. Quarterly Sales

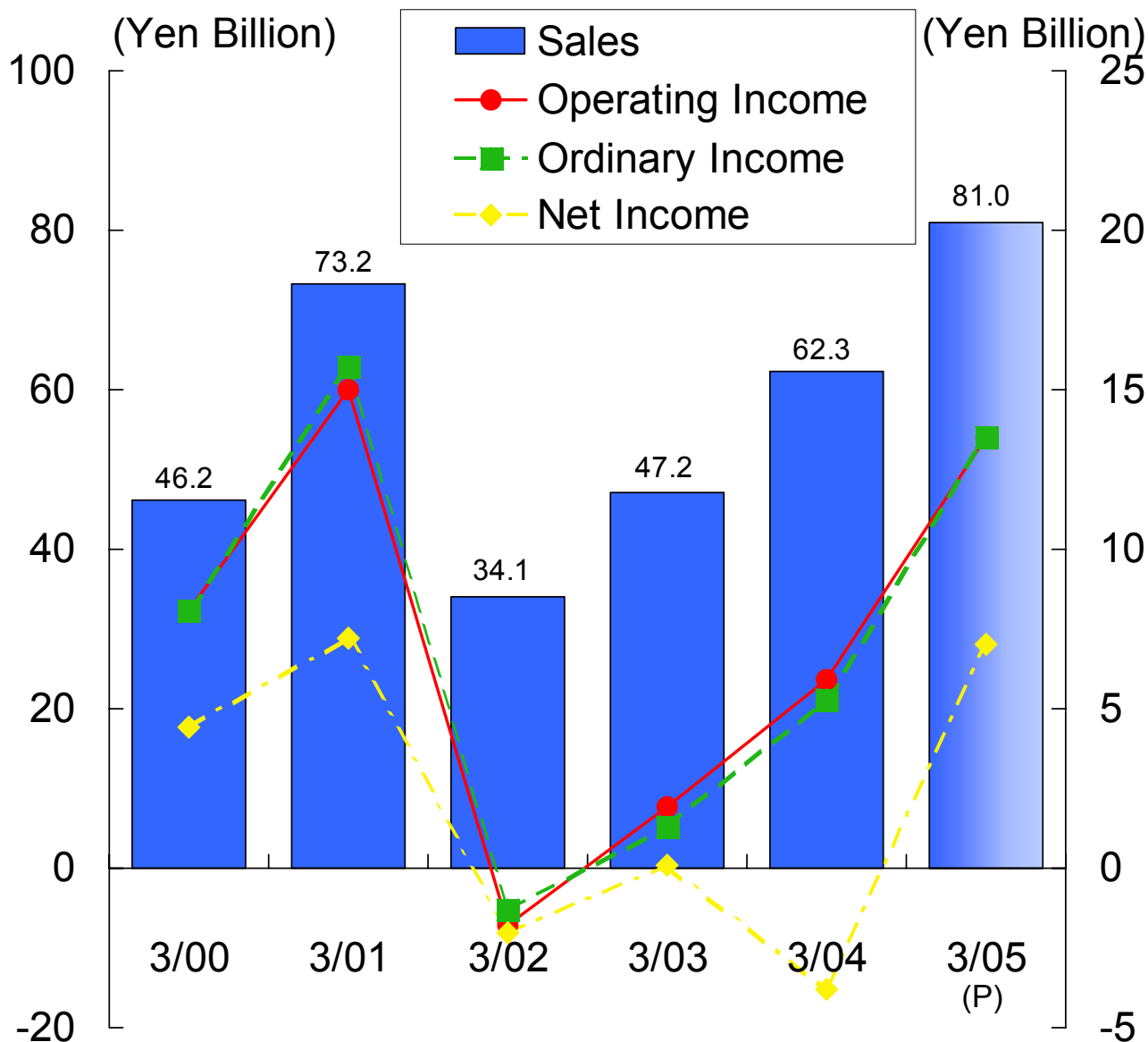
November 12, 2004

# 1. Operating Results (Consolidated)



(Yen Million)  
Interim Full Year

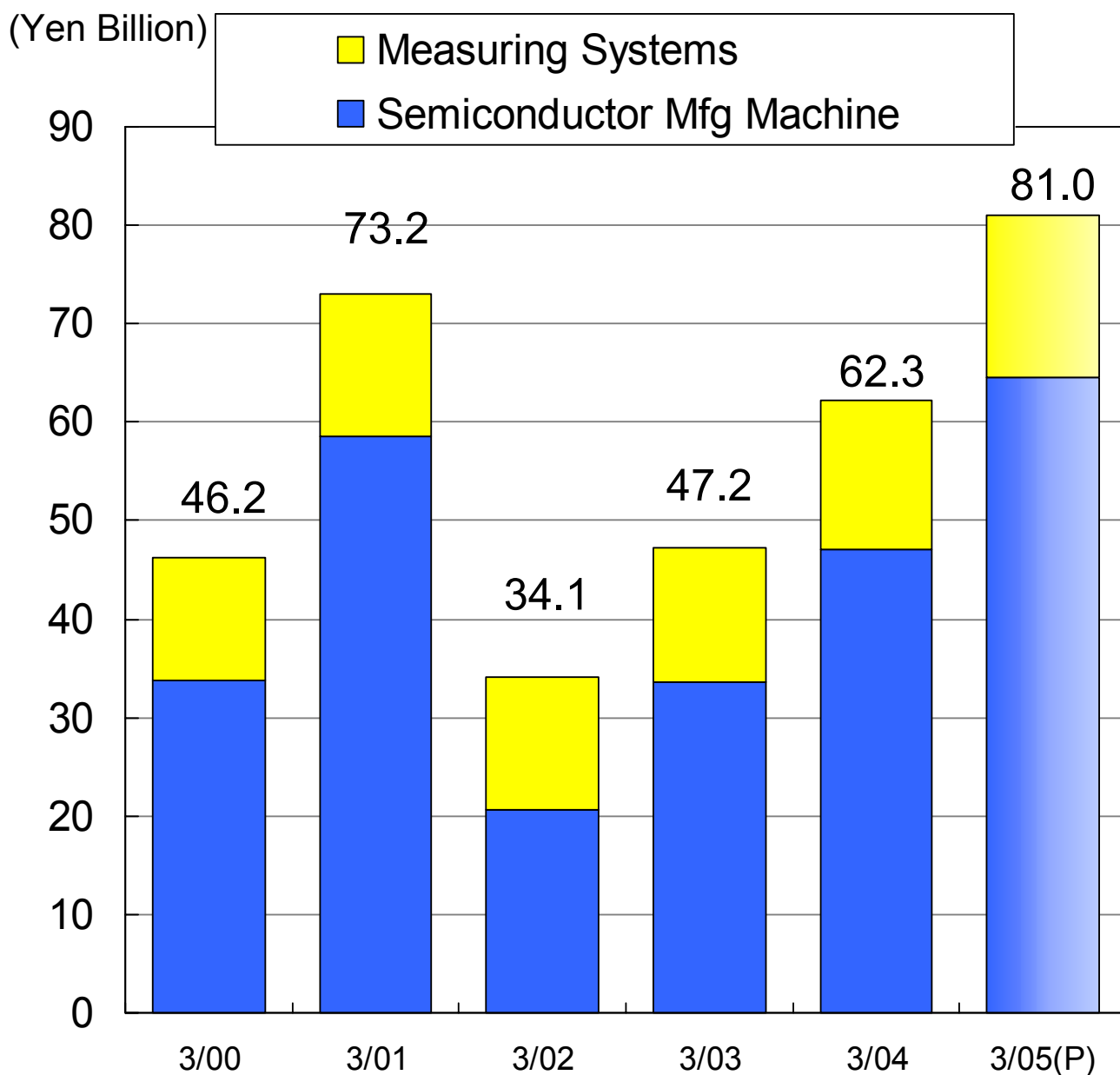
	3/00	3/01	3/02	3/03	3/04	9/04	3/05(P)
Sales	46,176	73,172	34,064	47,171	62,325	45,341	81,000
Operating Income	8,104	15,032	-1,757	1,860	5,947	8,158	13,500
Ordinary Income	8,138	14,674	-1,336	1,259	5,328	8,296	13,500
Net Income	4,422	7,237	-2,026	74	-3,784	4,454	7,000



# 2. Sales by Product Group (Consolidated)



	(Yen Million)						
	3/00	3/01	3/02	3/03	3/04	Interim 9/04	Full Year 3/05(P)
Semiconductor Mfg. Machine	33,811	58,526	20,607	33,561	47,045	36,692	64,500
Measuring Systems	12,364	14,646	13,457	13,610	15,279	8,649	16,500
<b>Total</b>	<b>46,176</b>	<b>73,172</b>	<b>34,064</b>	<b>47,171</b>	<b>62,325</b>	<b>45,341</b>	<b>81,000</b>



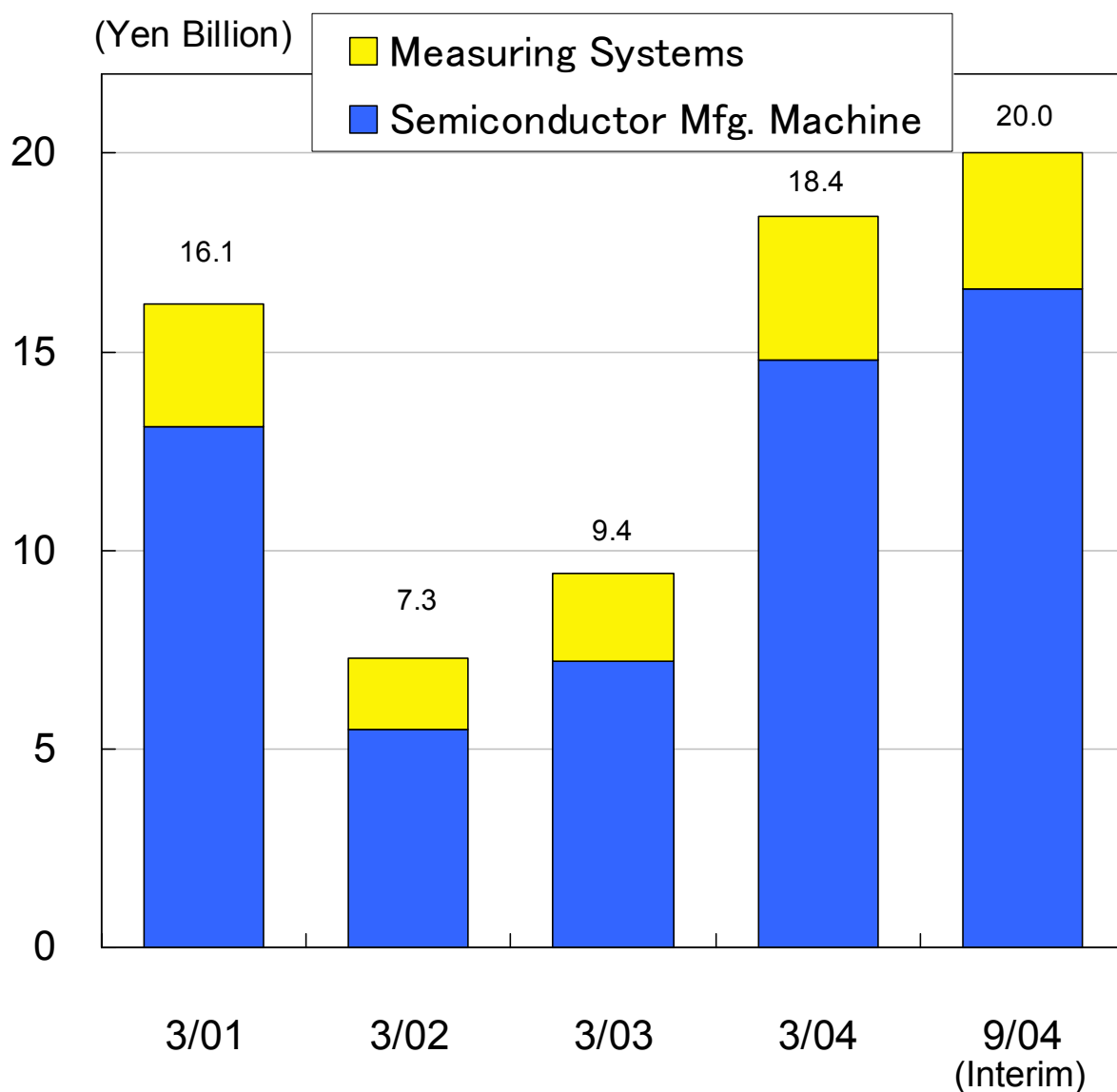
# 3. Order Backlog (Consolidated)



(Yen Million)

Interim

	3/01	3/02	3/03	3/04	9/04
Semiconductor Manufacturing Machine	13,089	5,533	7,212	14,821	16,618
Measuring Systems	3,051	1,810	2,207	3,565	3,356
<b>Total</b>	<b>16,140</b>	<b>7,344</b>	<b>9,420</b>	<b>18,386</b>	<b>19,974</b>



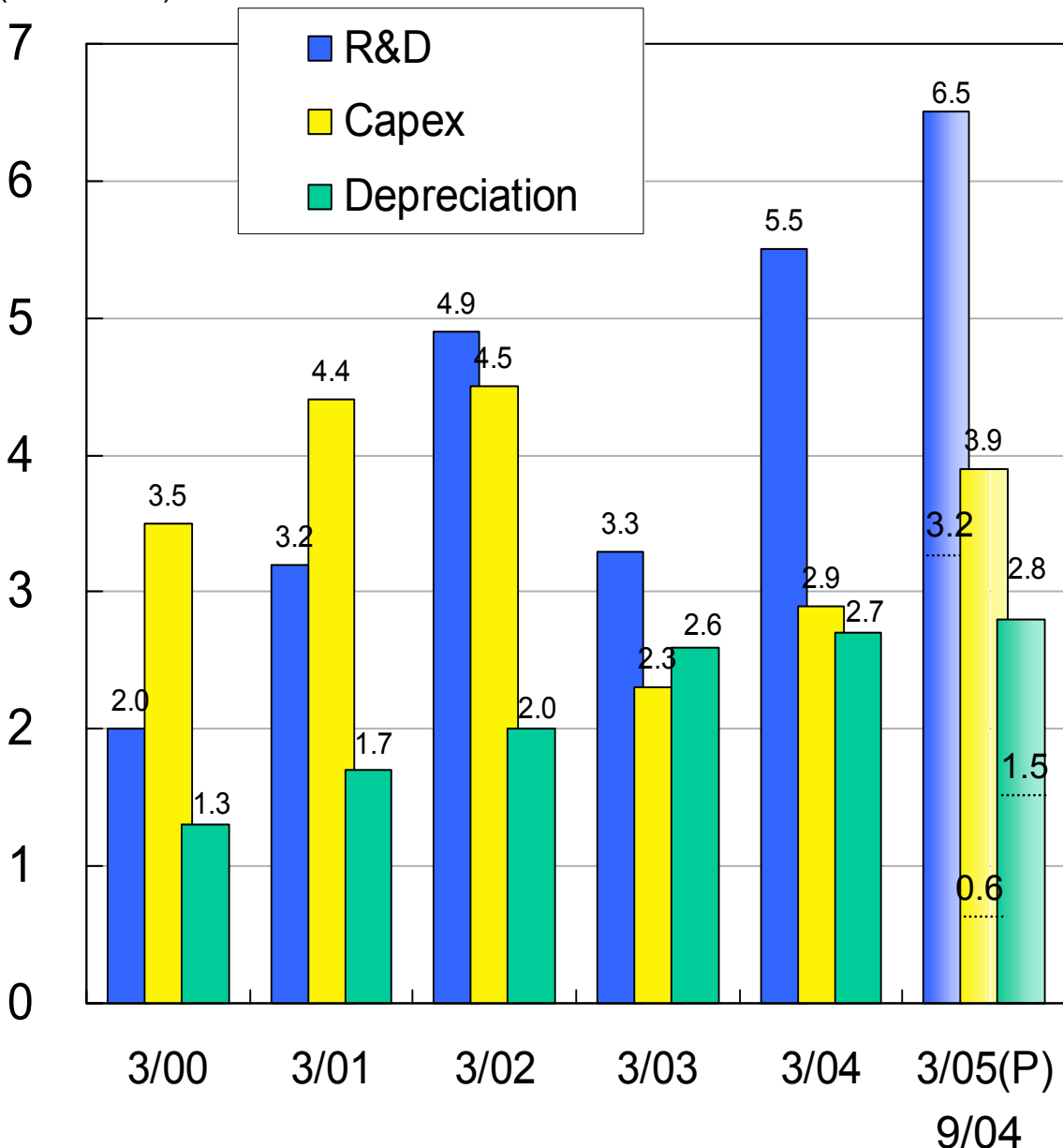
# 4. R&D, Capex & Depreciation (Consolidated)



(Yen Million)

	3/00	3/01	3/02	3/03	3/04	Interim 9/04	Full Year 3/05(P)
R&D	1,961	3,188	4,860	3,291	5,531	3,235	6,475
Capex	3,481	4,396	4,521	2,333	2,904	622	3,915
Depreciation	1,261	1,698	2,020	2,579	2,749	1,471	2,830

(Yen Billion)



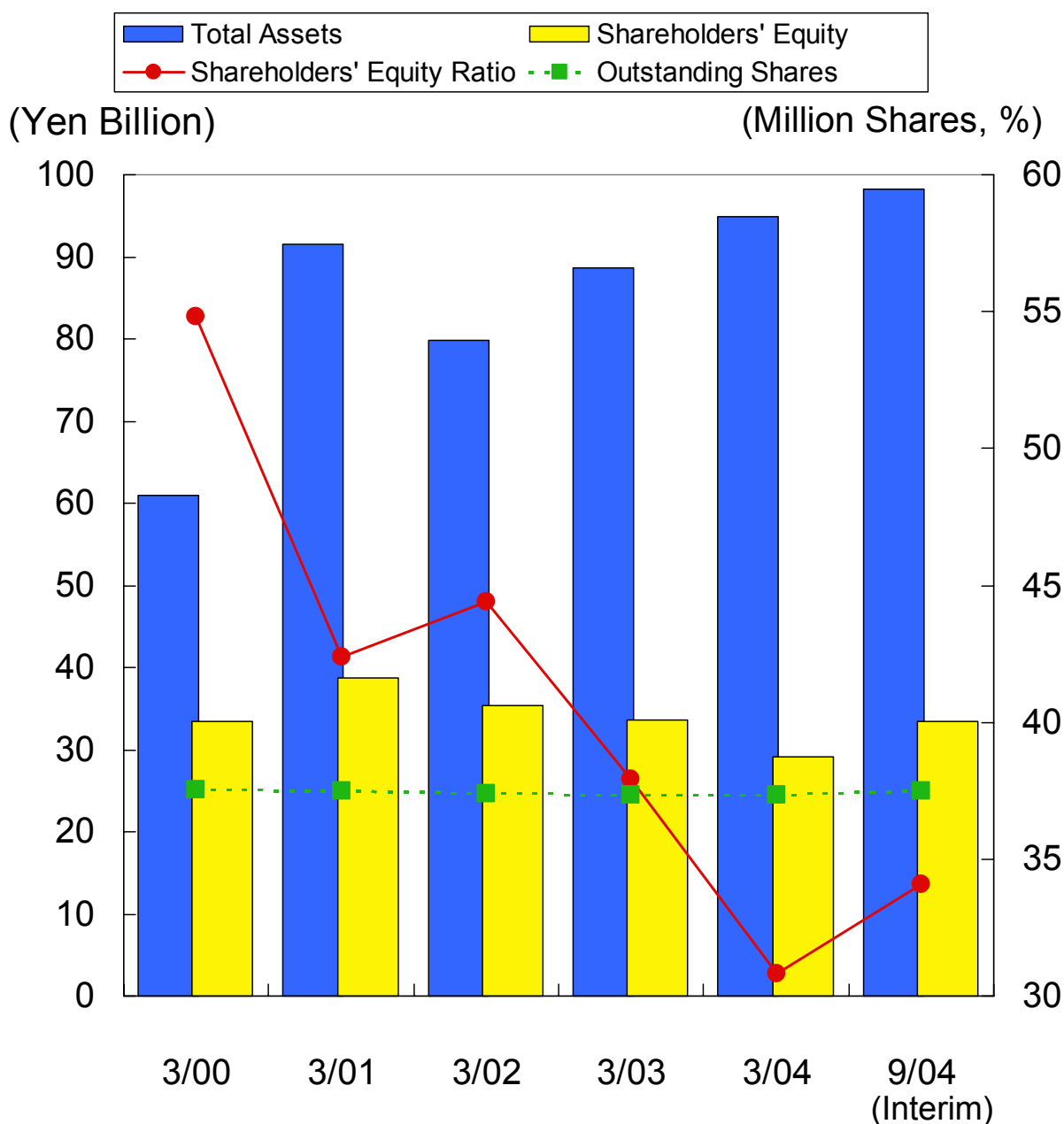
# 5. Balance Sheet (Consolidated)



(Yen Million, Share)

Interim

	3/00	3/01	3/02	3/03	3/04	9/04
Total Assets	61,007	91,477	79,865	88,669	94,893	98,311
Shareholders' Equity	33,433	38,779	35,423	33,645	29,183	33,530
Outstanding Shares	37,542,781	37,465,713	37,370,643	37,355,873	37,354,830	37,497,268
Shareholders' Equity Ratio(%)	54.8%	42.4%	44.4%	37.9%	30.8%	34.1%

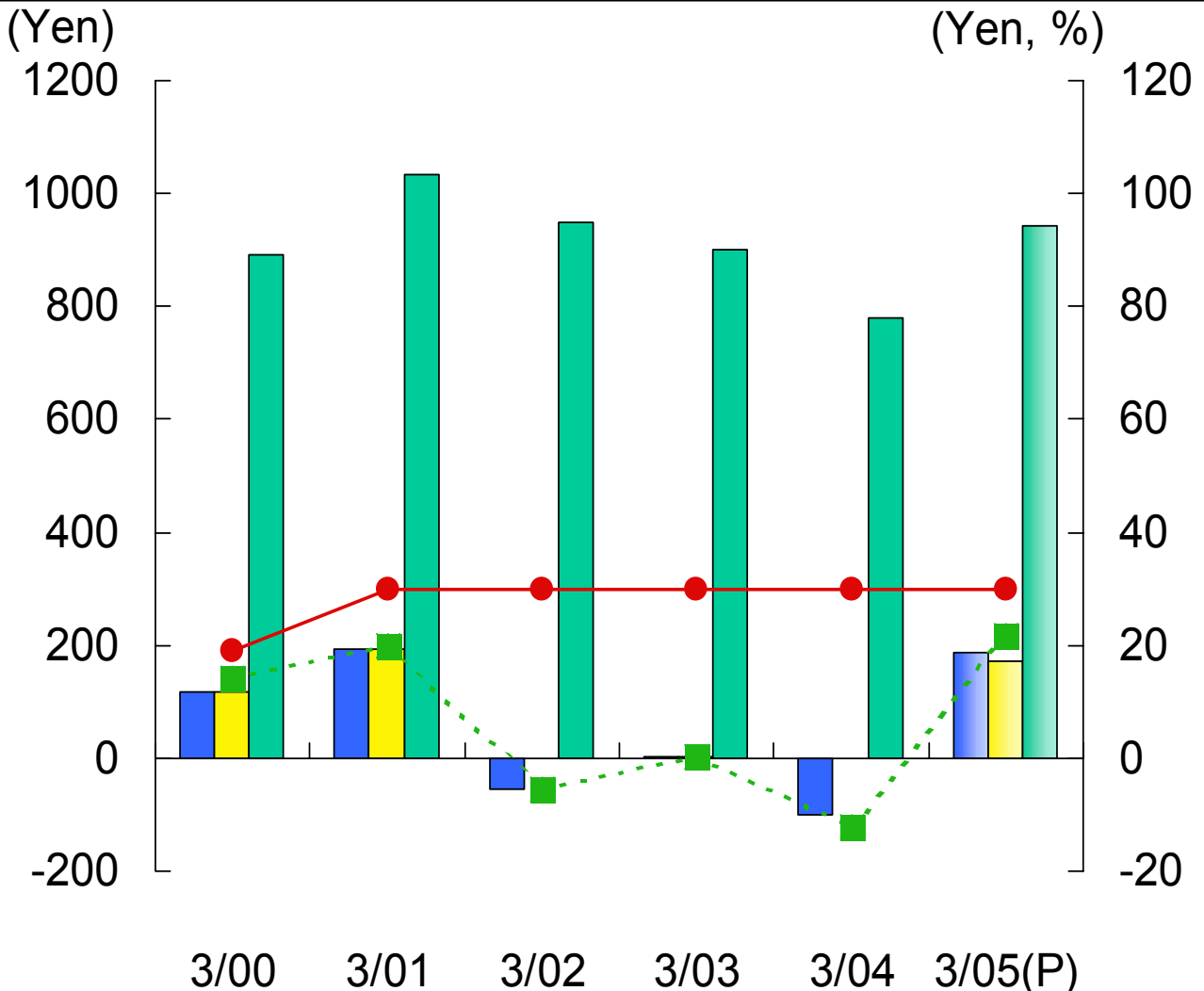
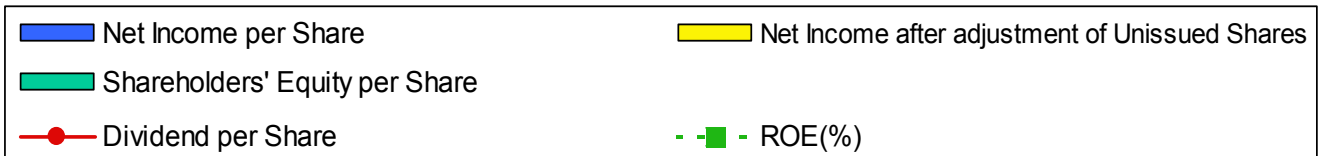


# 6. Per Share indexes, & ROE (Consolidated)



(Yen, Share)  
Full Year

	3/00	3/01	3/02	3/03	3/04	Interim 9/04	Full Year 3/05(P)
Outstanding Shares	37,543,034	37,465,771	37,370,643	37,355,873	37,354,830	37,497,268	37,497,268
Net Income per Share	118.43	192.95	-54.21	1.64	-101.67	119.07	186.90
EPS after adjust. of Unissued Shares	117.95	192.21	-	1.64	-	108.95	171.41
Shareholders' Equity per Share	890.55	1,035.06	947.90	900.32	780.87	894.21	944.07
Dividend per Share	19	30	30	30	30	15(Interim)	30
ROE(%)	14.3%	20.0%	-5.5%	0.2%	-12.0%	28.4%	21.7%

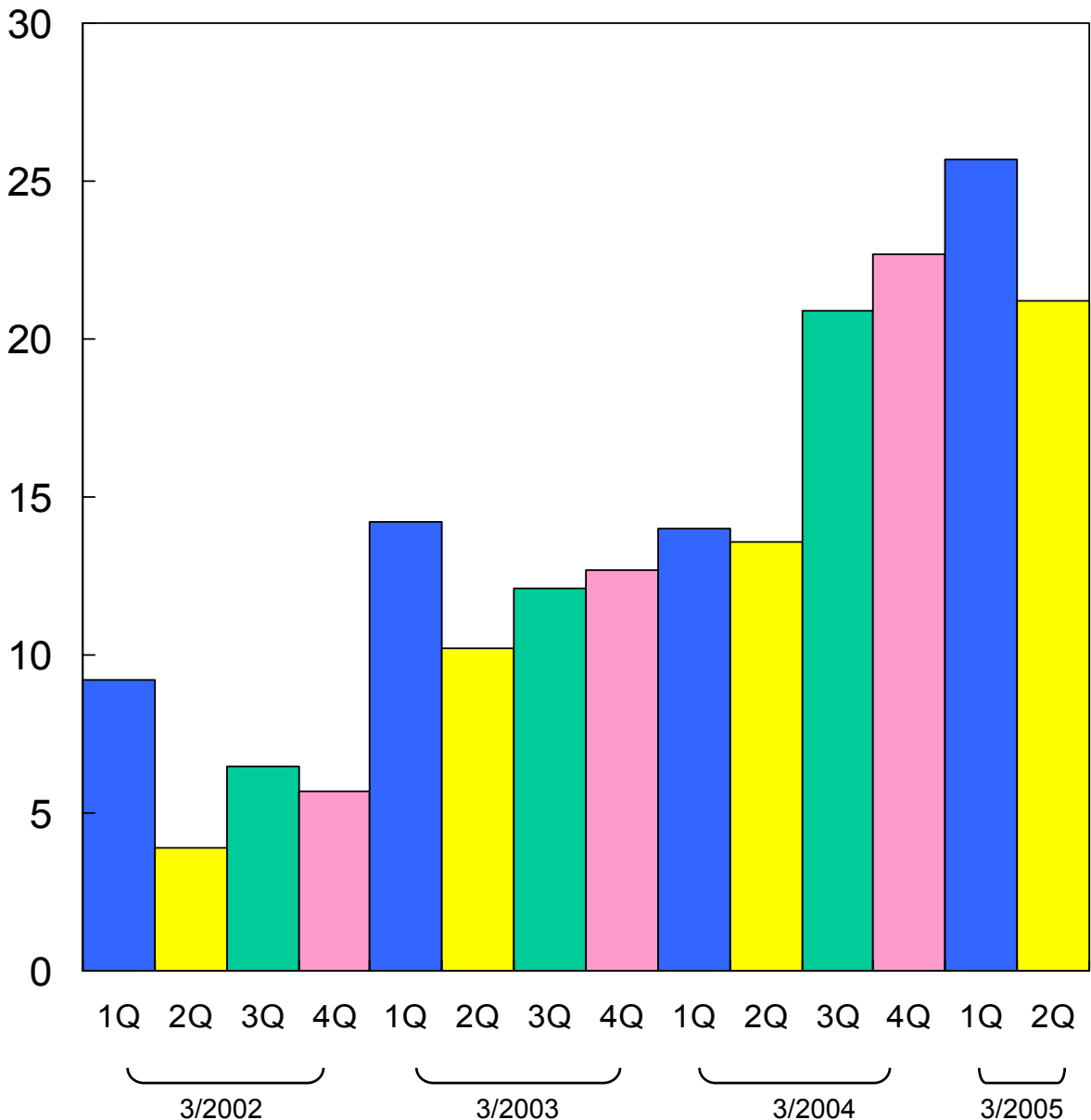


# 7. Quarterly Orders (Consolidated)



	(Yen Billion)			
	3/02	3/03	3/04	3/05
1Q	9,161	14,220	14,062	25,740
2Q	3,855	10,234	13,631	21,189
3Q	6,530	12,101	20,851	
4Q	5,723	12,693	22,744	

(Yen Billion)



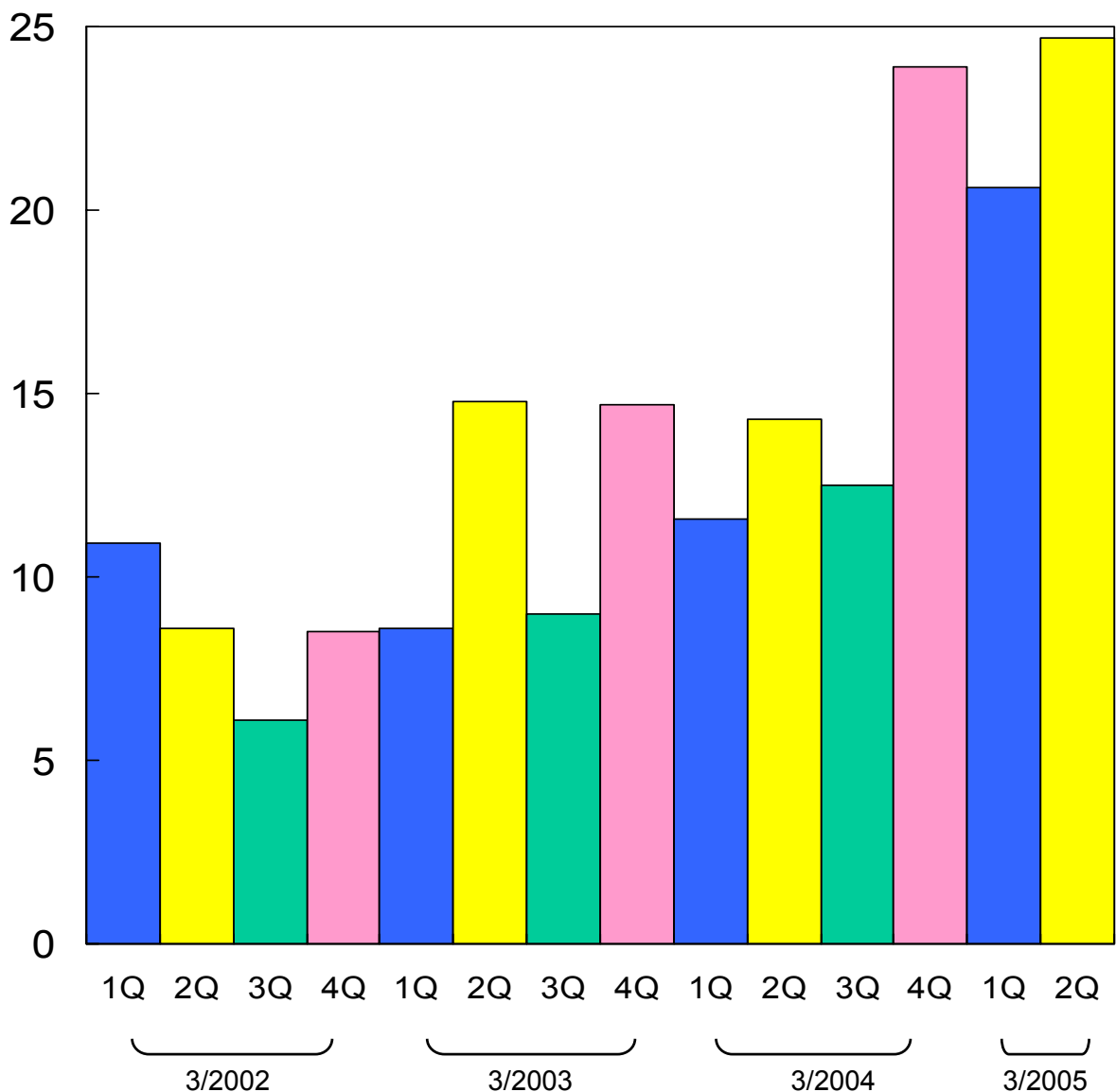
# 8. Quarterly Sales (Consolidated)



(Yen Million)

	3/02	3/03	3/04	3/05
1Q	10,926	8,562	11,586	20,637
2Q	8,581	14,832	14,323	24,704
3Q	6,091	9,049	12,502	
4Q	8,467	14,729	23,914	

(Yen Billion)

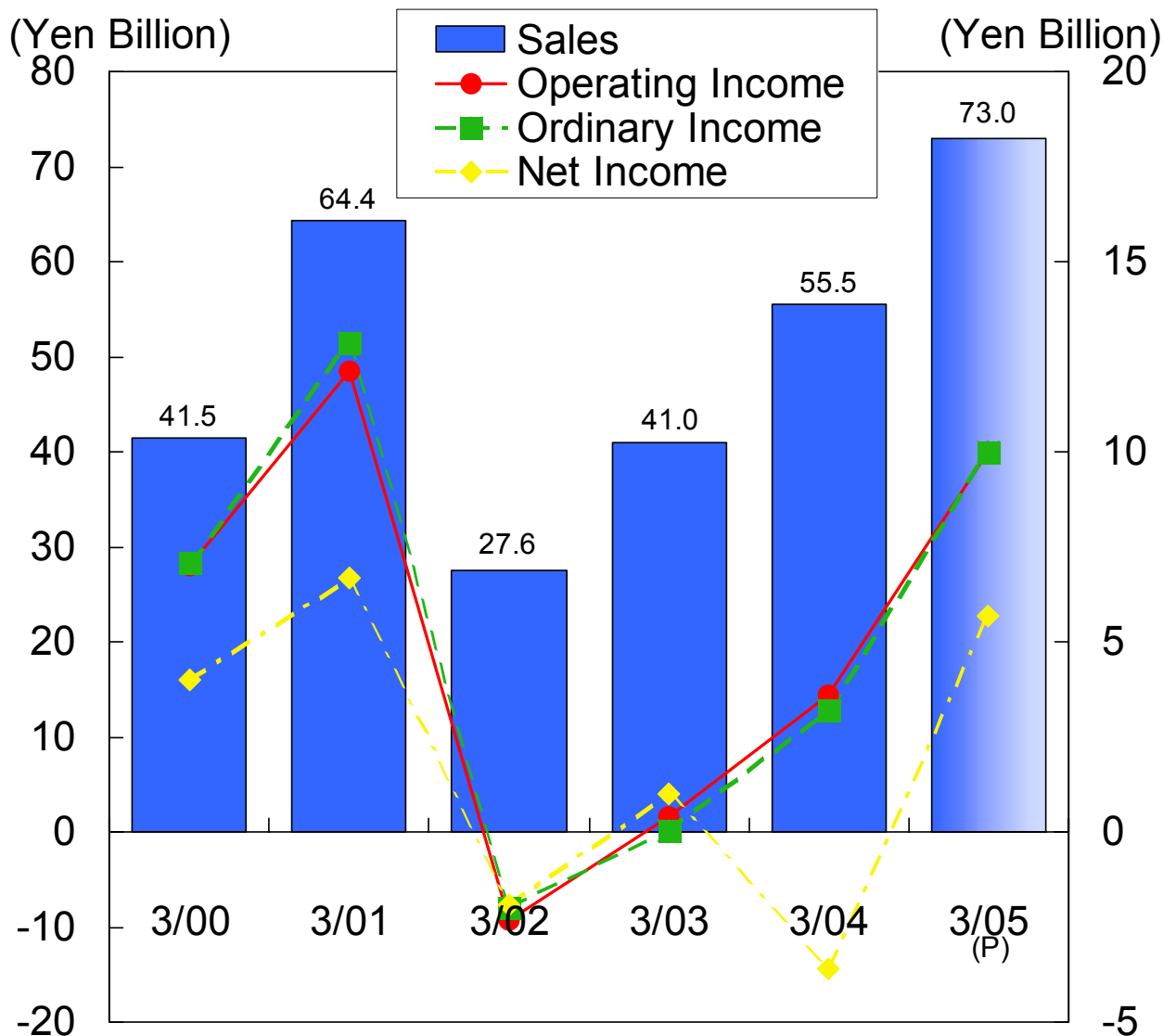


# 1. Operating Results (Non-Consolidated)



(Yen Million)

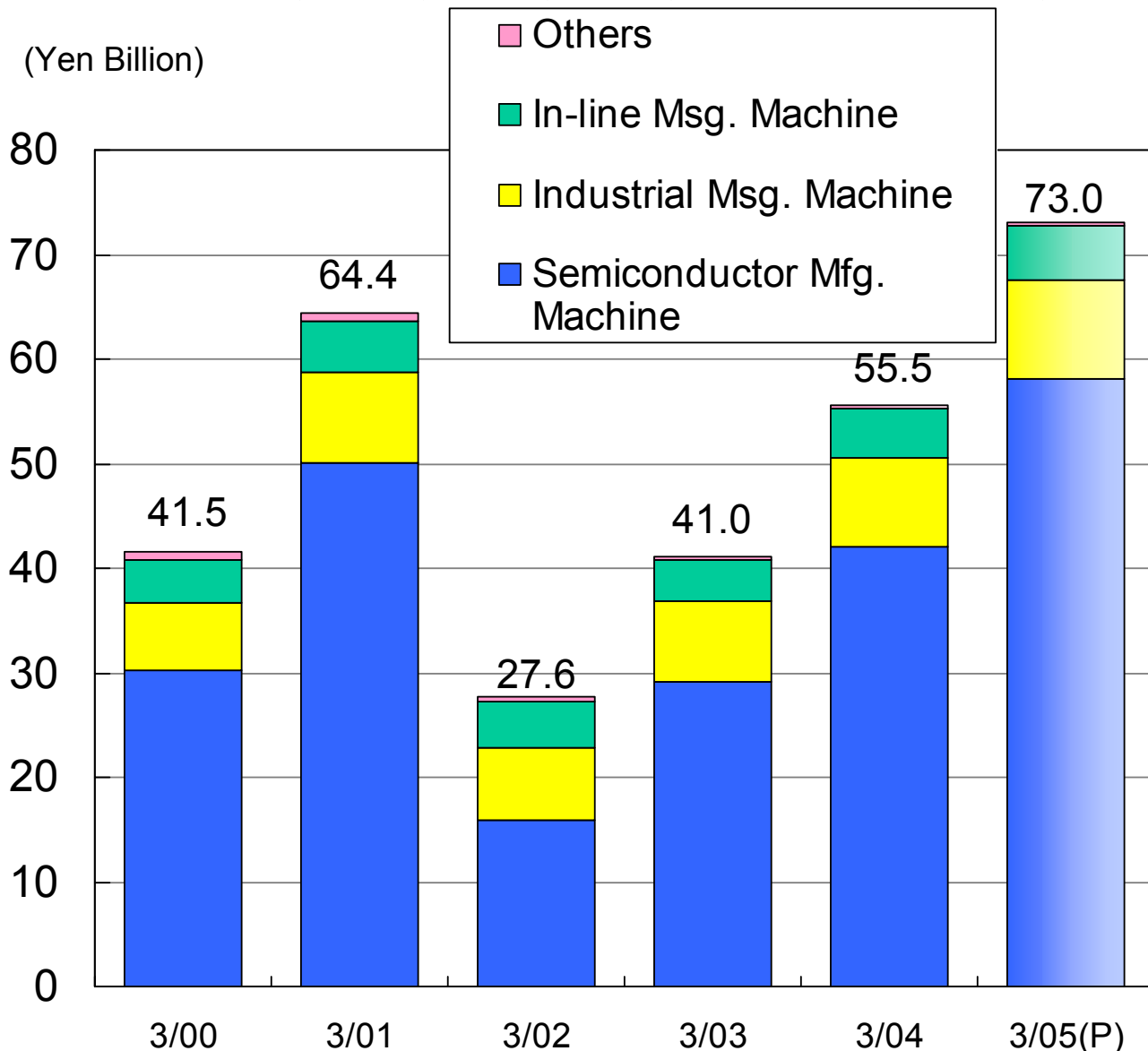
	3/00	3/01	3/02	3/03	3/04	Interim 9/04(P)	Full Year 3/05(P)
Sales	41,501	64,423	27,643	40,996	55,549	39,506	73,000
Operating Income	7,010	12,130	-2,304	406	3,616	6,275	10,000
Ordinary Income	7,069	12,942	-1,968	54	3,243	6,556	10,000
Net Income	4,010	6,688	-1,850	1,032	-3,592	3,740	5,700



# 2. Sales by Product Group (Non- Consolidated)



	3/00	3/01	3/02	3/03	3/04	Interim 9/04	Full Year 3/05(P)
Semiconductor Mfg. Machine	30,166	50,121	15,897	29,154	42,114	31,914	58,100
(Overseas Sales)	(14,984)	(26,326)	(8,240)	(17,037)	(24,351)	(19,876)	
Industrial Measuring Machine	6,526	8,575	6,969	7,631	8,513	4,848	9,500
(Overseas Sales)	(725)	(1,125)	(1,083)	(1,446)	(1,487)	(977)	
In-line Measuring Machine	4,143	4,906	4,278	3,959	4,559	2,593	5,100
(Overseas Sales)	(261)	(398)	(283)	(256)	(242)	(250)	
Others	665	820	498	251	362	152	300
(Overseas Sales)	(43)	(47)	(43)	(28)	(17)	(11)	
<b>Total</b>	<b>41,501</b>	<b>64,423</b>	<b>27,643</b>	<b>40,996</b>	<b>55,549</b>	<b>39,506</b>	<b>73,000</b>
(Total Overseas Sales)	(16,015)	(27,896)	(9,651)	(18,768)	(26,097)	(21,144)	



# 3. Order Backlog (Non-Consolidated)

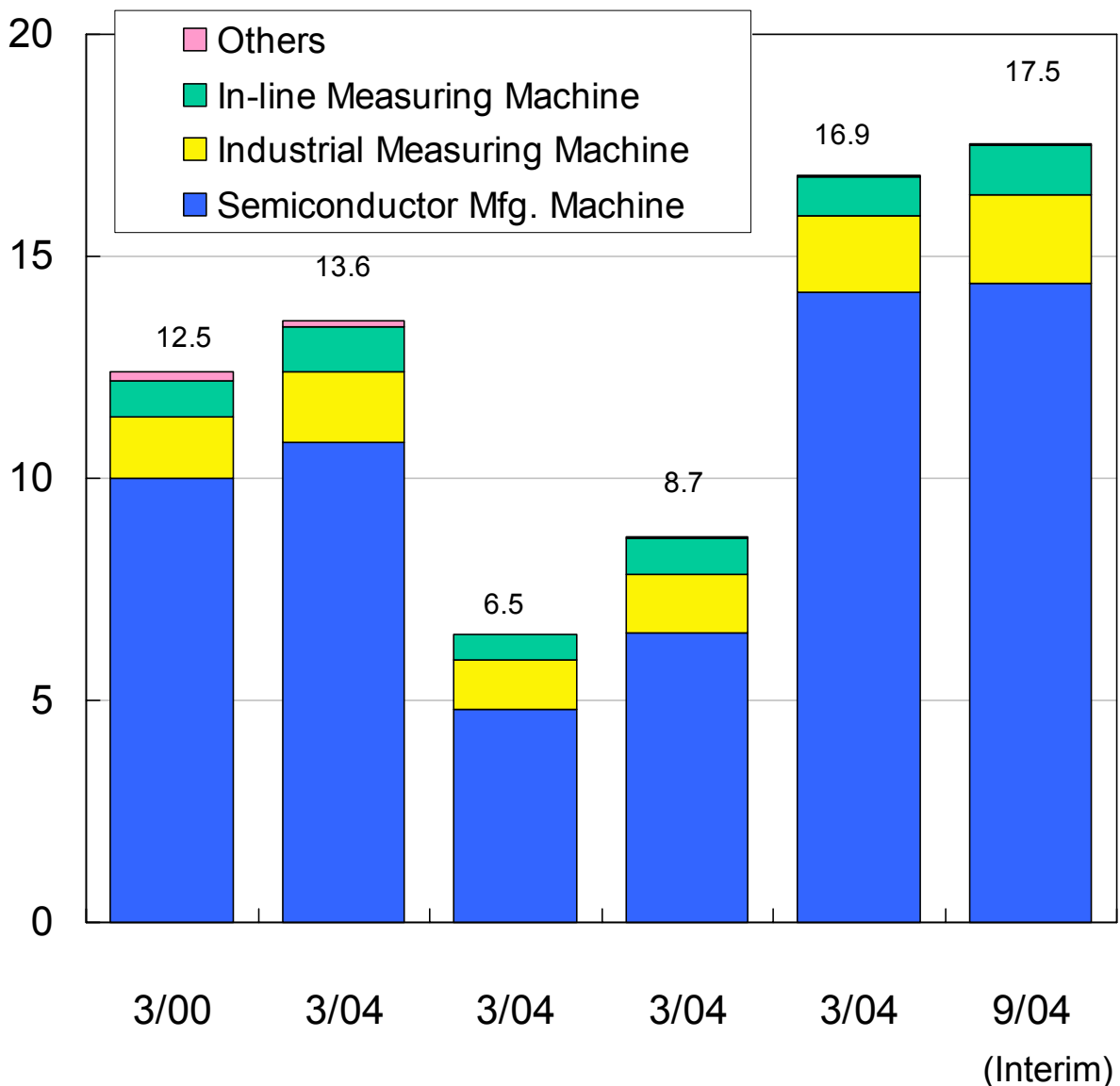


(Yen Million)

Interim

	3/00	3/01	3/02	3/03	3/04	9/04
Semiconductor Mfg. Machine	10,026	10,788	4,838	6,524	14,237	14,351
Industrial Measuring Machine	1,427	1,618	1,092	1,325	1,713	1,955
In-line Measuring Machine	843	996	576	806	875	1,117
Others	190	161	16	51	37	41
<b>Total</b>	<b>12,487</b>	<b>13,564</b>	<b>6,523</b>	<b>8,708</b>	<b>16,863</b>	<b>17,464</b>

(Yen Billion)

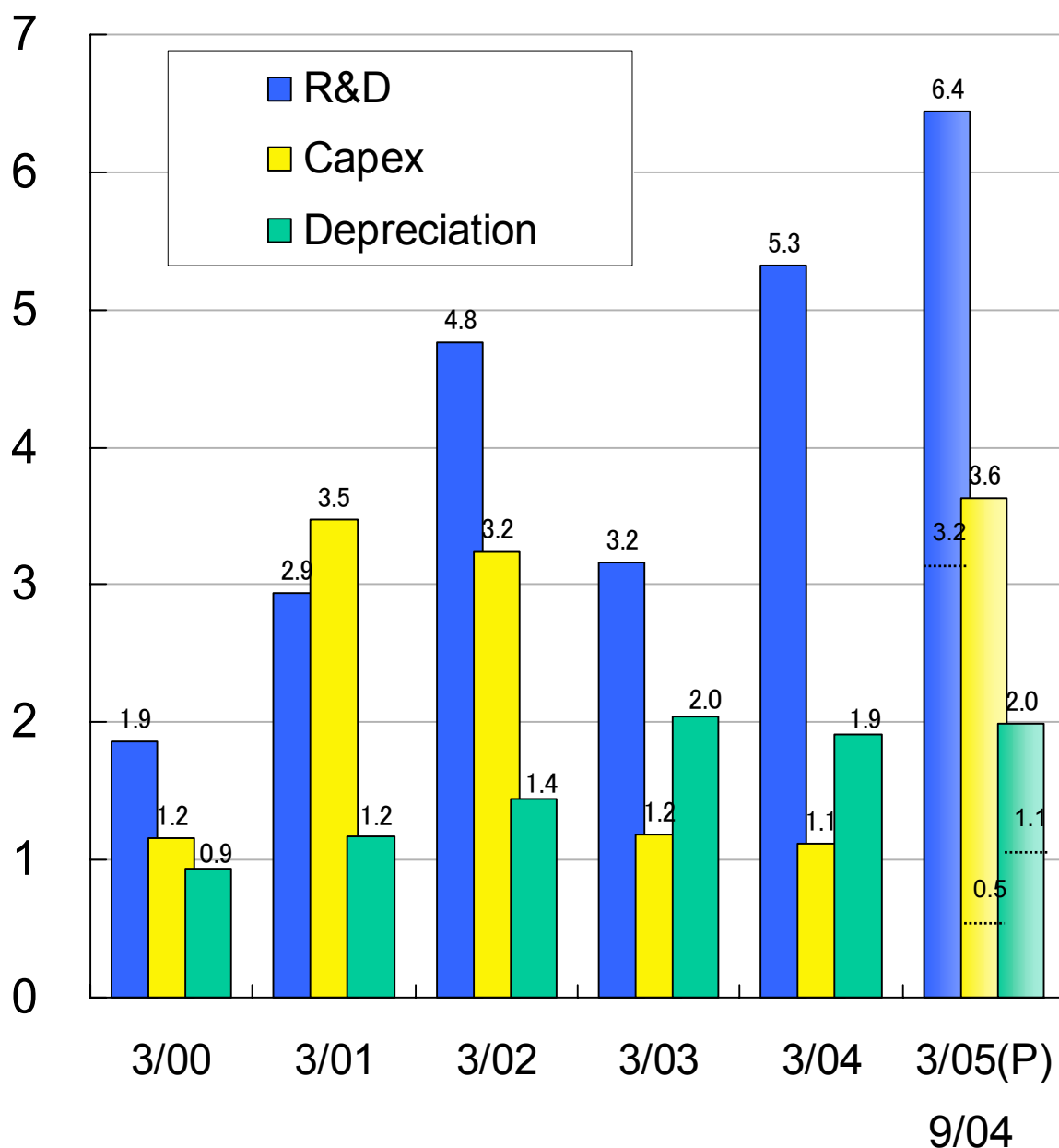


# 4. R&D, Capex & Depreciation (Non-Consolidated)



	3/00	3/01	3/02	3/03	3/04	Interim 9/04	Full Year 3/05(P)
R&D	1,866	2,941	4,758	3,156	5,321	3,221	6,445
Capex	1,153	3,470	3,242	1,186	1,124	479	3,629
Depreciation	937	1,174	1,441	2,042	1,907	1,051	1,988

(Yen Billion)

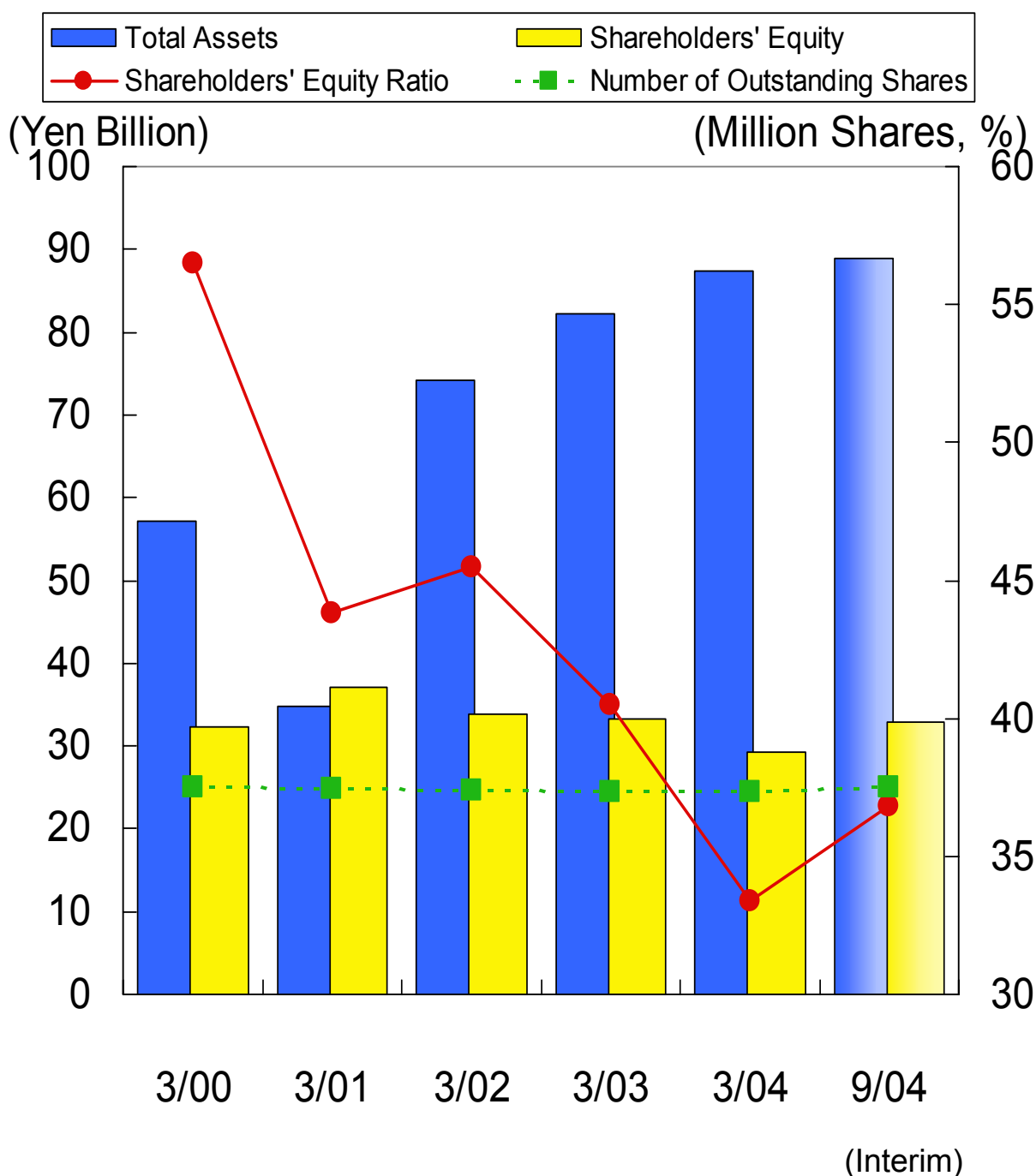


# 5. Balance Sheet (Non-Consolidated)



(Yen Million, Share)

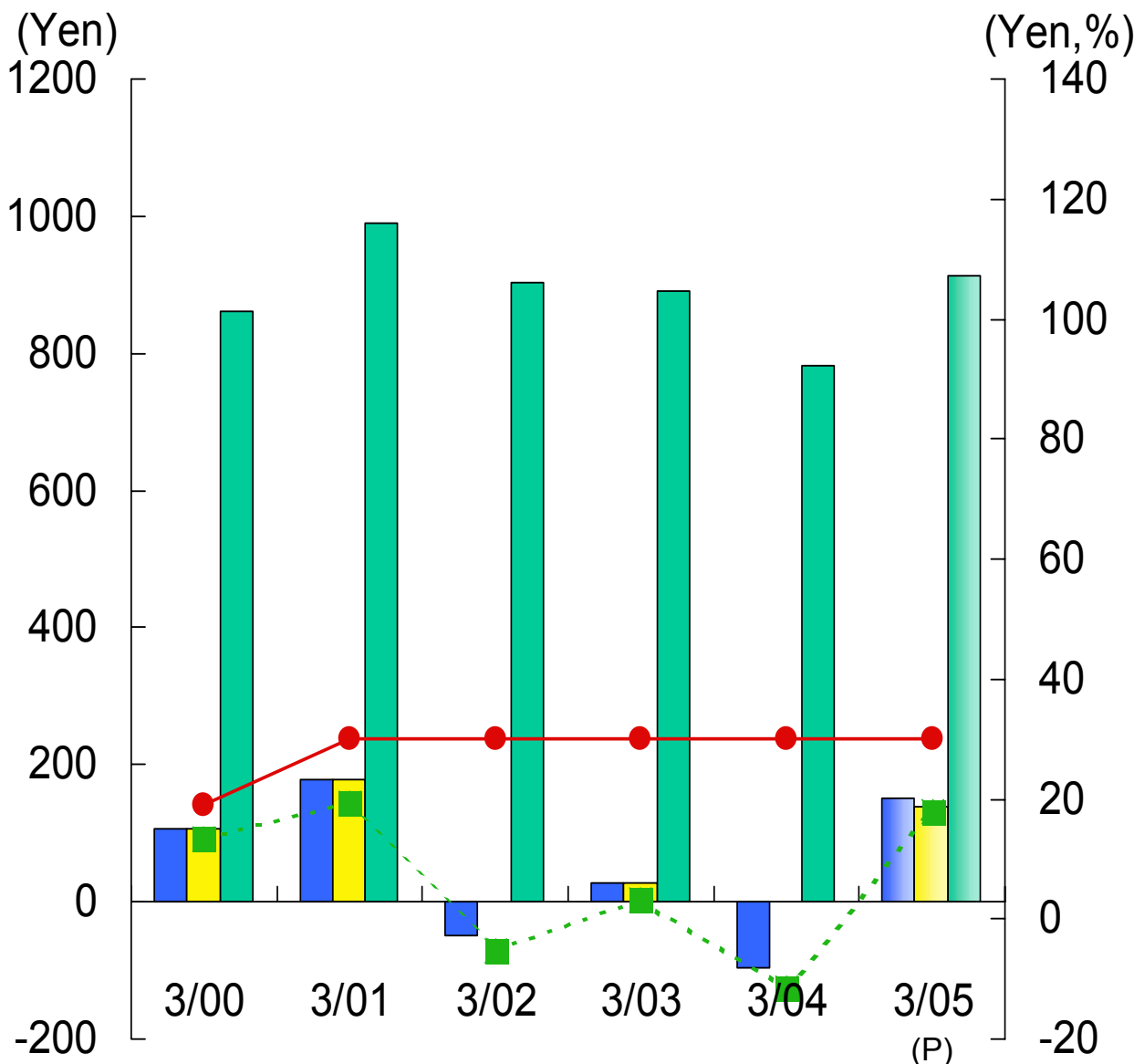
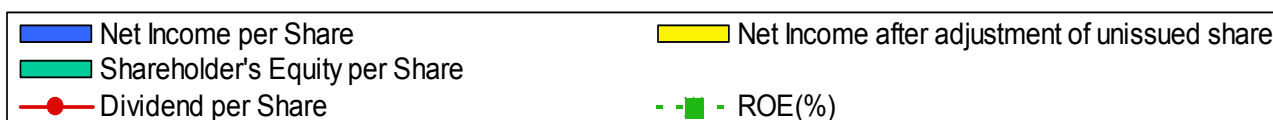
	3/00	3/01	3/02	3/03	3/04	9/04
Total Assets	57,166	84,788	74,130	82,163	87,385	88,921
Shareholders' Equity	32,299	37,096	33,752	33,247	29,204	32,763
Number of Outstanding Shares	37,543,034	37,465,771	37,370,643	37,355,873	37,354,830	37,497,268
Shareholders' Equity Ratio	56.5%	43.8%	45.5%	40.5%	33.4%	36.8%



# 6. Per Share indexes, & ROE (Non-Consolidated)



	3/00	3/01	3/02	3/03	3/04	9/04	3/05(P)
						(Share, Yen) Interim	Full Year
Number of Outstanding Shares	37,543,034	37,465,771	37,370,643	37,355,873	37,354,830	37,497,268	37,497,268
Net Income per Share	107.41	178.32	-49.50	27.63	-96.16	99.97	152.19
EPS after adjustment of unissued shares	106.98	177.64	-	27.59	-	91.47	139.57
Shareholders' Equity per Share	860.33	990.13	903.17	890.03	781.80	873.74	912.07
Dividend per Share	19	30	30	30	30	15(Interim)	30
ROE(%)	13.3%	19.3%	-5.2%	3.1%	-11.5%	24.1%	18.0%



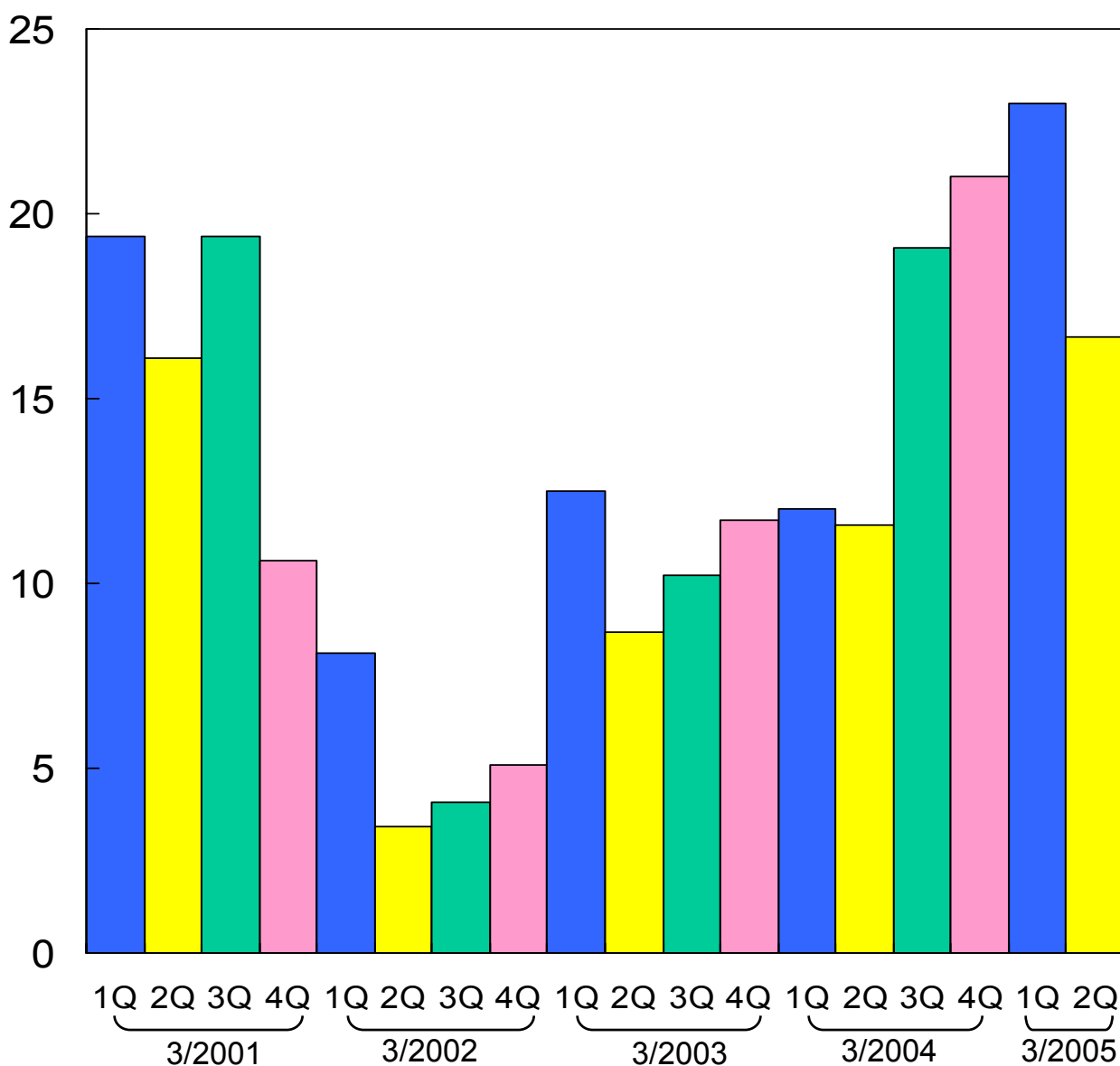
# 7. Quarterly Orders (Non-Consolidated)



(Yen Million)

	3/01	3/02	3/03	3/04	3/05
1Q	19,362	8,085	12,537	11,959	23,445
2Q	16,109	3,408	8,695	11,617	16,652
3Q	19,442	4,050	10,220	19,086	
4Q	10,590	5,056	11,730	21,041	

(Yen Billion)



# 8. Quarterly Sales (Non-Consolidated)



(Yen Million)

	3/01	3/02	3/03	3/04	3/05
1Q	12,472	9,070	6,673	10,417	17,736
2Q	18,590	7,106	12,877	12,688	21,770
3Q	14,614	4,490	7,706	10,692	
4Q	18,928	6,977	13,741	21,752	

(Yen Billion)

