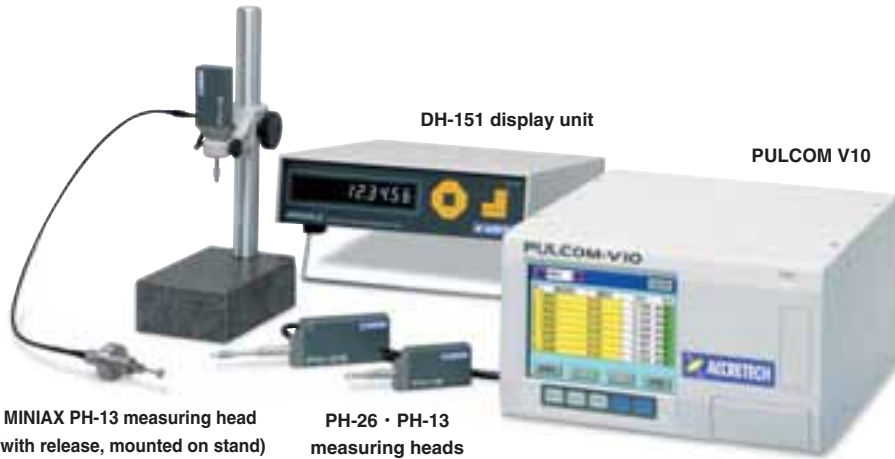


MINIAX >>>



Quick Response and High Rigidity

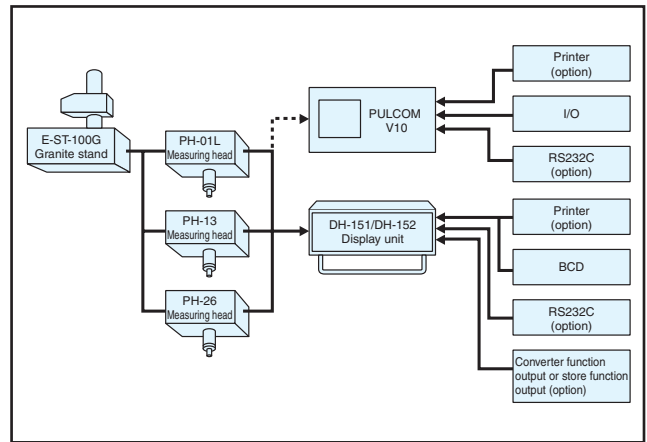
Improved bearings and optical system provide 1000mm/second (V10 connection) high-speed response and high rigidity.

Powerful Application Software

This unit can be used in combination with the powerful application software used by the V10, which sets the standard for in-line measuring machines. As with past models, connection to the DH-151 display unit is also supported.

- Multi-point measuring system: Up to four MINIAX units can be connected (standard: 2) for a maximum of 32 different measurements (8 items can be displayed simultaneously).
- Workpiece change function (option): This option eliminates the need for frequent setup changes when measuring different types of workpieces.
- Dual language display: Japanese and English
- Judgment function: +NG、OK1-OKn、-NG (n=19 or less)
- Smoothing: Measured data stabilization can be set in 0.01-second units.
- RS-232C (option): For output of measurement data and judgment results.
- Store function (option): Peak-to-Peak、Max、Min
- SPS function (option): For use in combination of the PC card for data storage (CSV format)
- Print function (option): Enables printing of measurement results.

System Configuration



Specifications

Measuring Head Specifications Caution - Release cannot be used on the line.

Model	PH-01L	PH-13	PH-26
Measuring range	10 mm	13 mm	26 mm
Measuring accuracy (at 20°C)	±0.3 μm	±0.3 μm	±0.4 μm
Measuring force	Downwards	0.1 N	0.7 – 2.3 N
	Sideways	–	0.4 – 1.9 N
	Upwards	–	0.1 – 1.5 N
Weight	75 g	Approx. 145 g	Approx. 195 g
Waterproof	IP50		
Shock resistance	Horizontal installation	–	70G
	Vertical installation	–	120G
Functions (options)	Low measuring force dedicated type	Release can be provided	Release can be provided

Display Unit Specifications

Model	DH-151	DH-152
Display	Green fluorescent display tube, zero suppress	
Min. display value	0.0001 mm	0.00005 mm
Display range	±999.9999 mm	±999.99995 mm
Quantization error	1 count	
Response speed	500 mm/s	
Digital output	C-MOS IC level (74HC series) Positive logic BCD/Binary parallel, Fan-out 10 (74LS type)	
External operation	Zero set, preset, display/output latch	
Functions	Zero set, preset, attribute direction changeover, brightness adjustment, speed check, self diagnosis	
Usage temperature range	0°C – 40°C (Storage temperature: –20°C – 70°C)	
Power source	AC 85V – 250V, 50/60 Hz, Approx. 10VA	
Weight	Approx. 2.7 kg	

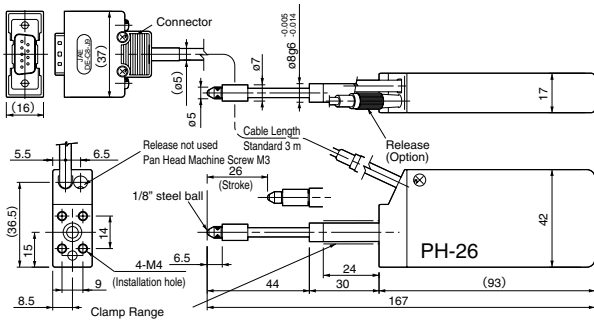
PULCOM V10 Application Specifications

Model	E-PV10A
Display	6.5 inch TFT color liquid crystal display
Display items	Measured results, list of items (meter can be displayed during in-process use)
Display range	±999.9999 mm
Min. display value	0.1 μm, 0.2 μm, 0.5 μm, 1 μm
Display unit	Select: μm, mm or inches
No. of detectors	Standard: 2 (Max. 4)
Measured items	Max. 32
Input methods	Touch panel / key sheet
Judgment output	1 I/O circuit board provided as standard feature. Up to 3 I/O circuit boards can be added when this is insufficient.
Magnification calibration	Key input
Sampling speed	1000 mm/s
RS-232C	Standard
Printer output	Standard
Program conversion	Key operation after PC card is inserted
Outer dimensions (W × D × H)	287 × 328 × 159 mm

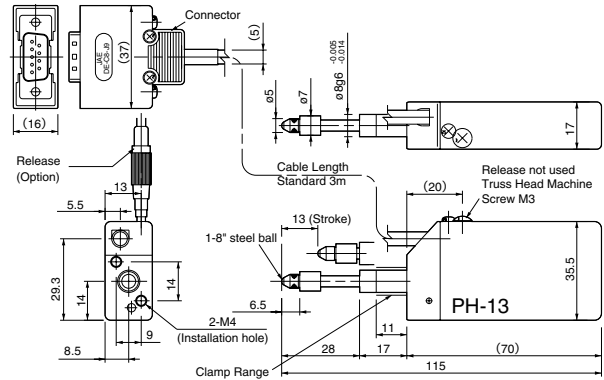
- The DH-151 supports connection of the E-PR-1000 statistic printer only. Connection of commercially available printers is not supported.
- Product codes Statistic Printer E-PR-1000 : 0939130
 Statistic Printer Connection Cable: 0939139

High Precision Digital Measuring Instruments

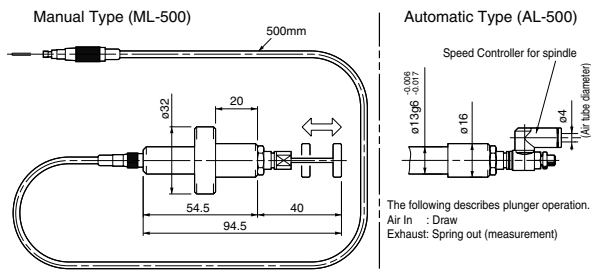
Outer Appearance/Dimension Diagram



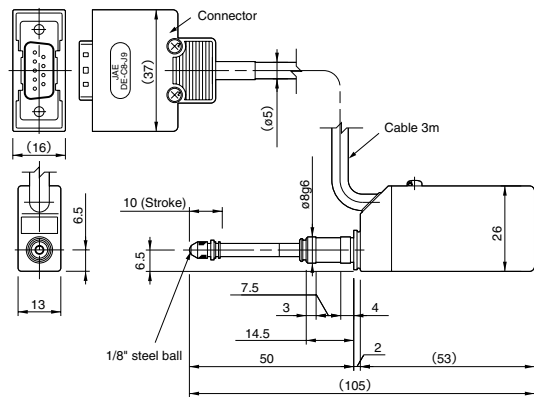
Measuring Heads PH-26 (Product Code: 4205820)



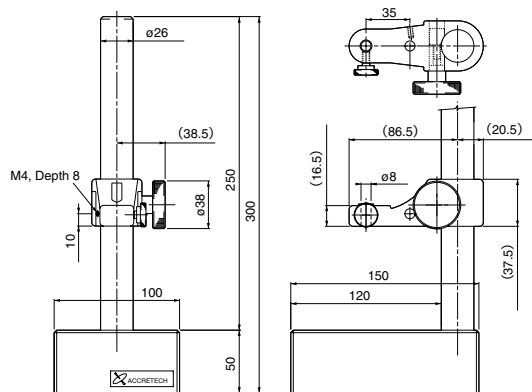
Measuring Heads PH-13 (Product Code: 4205819)



Caution - Cannot be used on the line because of the release system.
Release for PH-13, 26 (Product Code: 4300539) Made-to-order



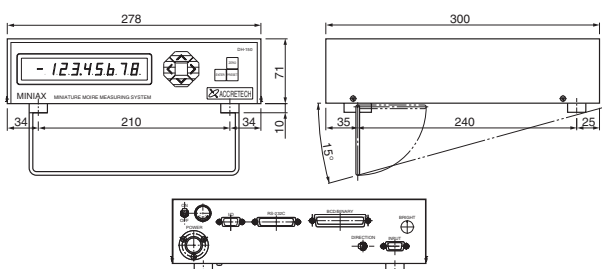
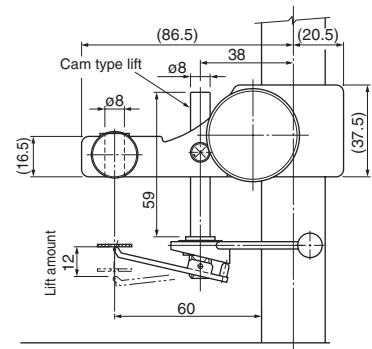
Measuring Heads PH-01L (Product Code: 0903005)



Stone top stand: E-ST-100G (Product Code: 0997930)

PH-01L does not support release connection.

Comes with cam type lift for stand use.



Display Unit DH-151/152 (Product Code: 0903070/0903080)

See the separate pages for PULCOM V10A dimension diagrams.
Use of the V10A requires addition of a 2-channel counter board.



V10A
Product Codes PULCOM V10A
2-Channel Counter Board: 4205567