



TOKYO SEIMITSU

Reference Data for Fiscal – Year Results

As at May 22, 2001

Table of Contents

. Consolidated

1. Results of Operations
2. Sales by Products Group
3. Order Backlog
4. R & D, Investment in
Plant and Equipment, and Depreciation
5. Balance Sheet
6. Per Share Indexes, and ROE

.Non-Consolidated

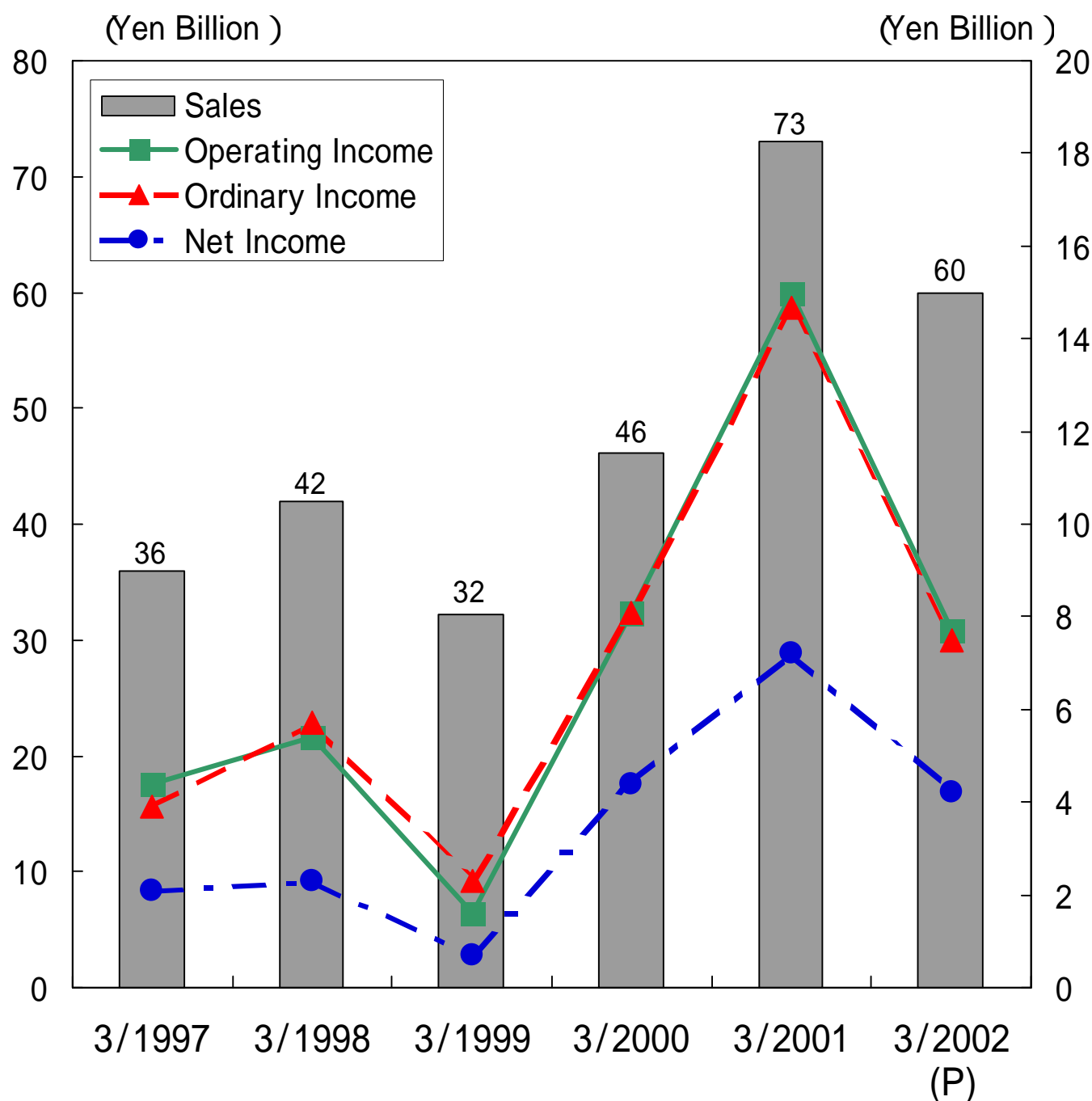
1. Results of Operations
2. Sales by Products Group
3. Order Backlog
4. R & D, Investment in
Plant and Equipment, and Depreciation
5. Balance Sheet
6. Per Share Indexes, and ROE

Tokyo Seimitsu co., Ltd.

1. Results of Operations (Consolidated)

(Yen Million)

	3/1997	3/1998	3/1999	3/2000	3/2001	9/2001 (P)	3/2002 (P)
Sales	35,892	42,349	32,153	46,176	73,172	27,500	60,000
Operating Income	4,397	5,422	1,621	8,104	15,032	3,700	7,700
Ordinary Income	3,889	5,686	2,293	8,138	14,674	3,600	7,500
Net Income	2,120	2,251	715	4,422	7,237	2,000	4,200

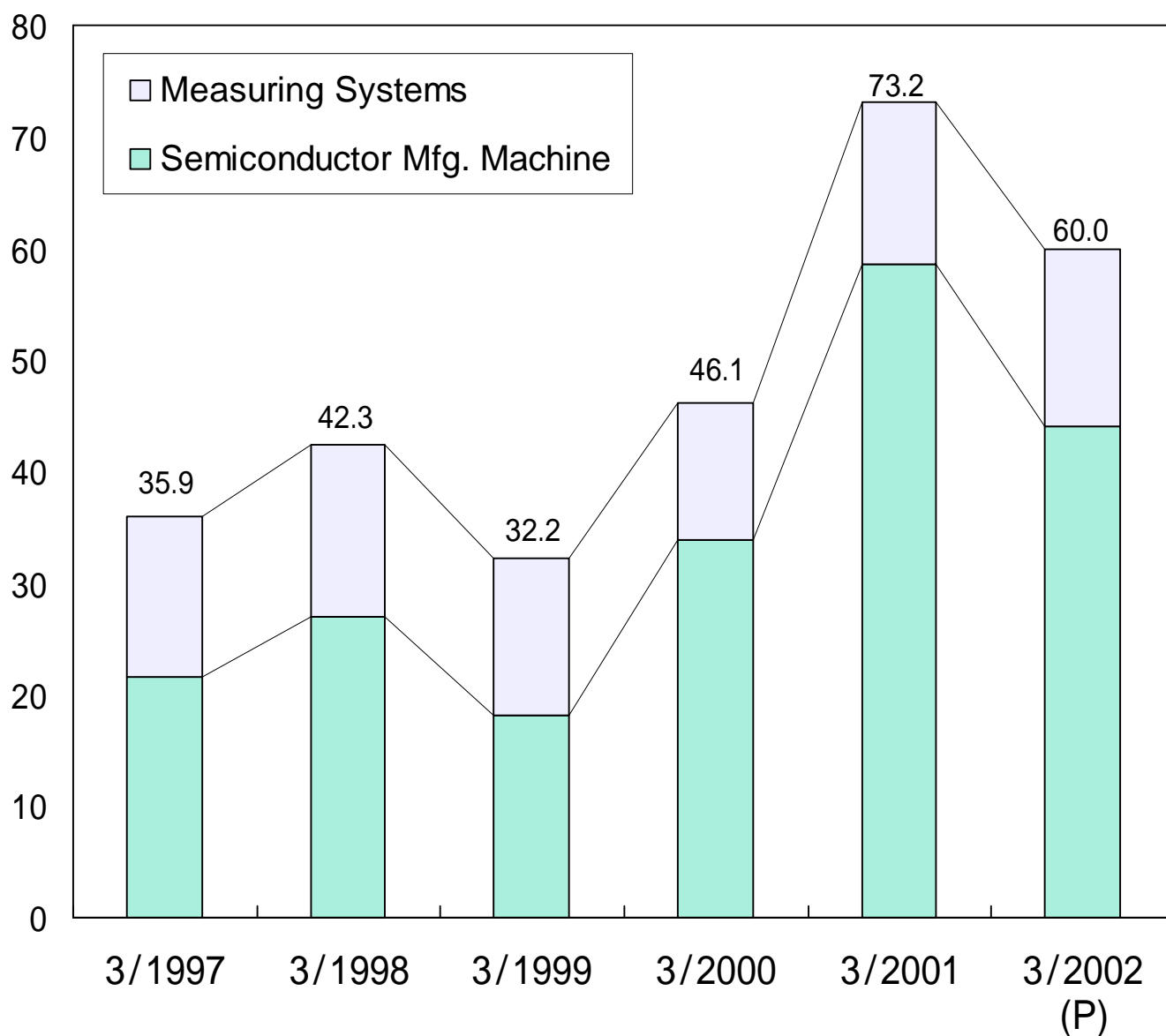


2. Sales by Products Group (Consolidated)

(Yen Million)

	3/1997	3/1998	3/1999	3/2000	3/2001	3/2002 (P)
Semiconductor Mfg. Machine	21,564	27,018	18,150	33,811	58,526	44,000
Measuring Systems	14,327	15,330	14,002	12,364	14,646	16,000
Total	35,892	42,349	32,153	46,176	73,172	60,000

(Yen Billion)

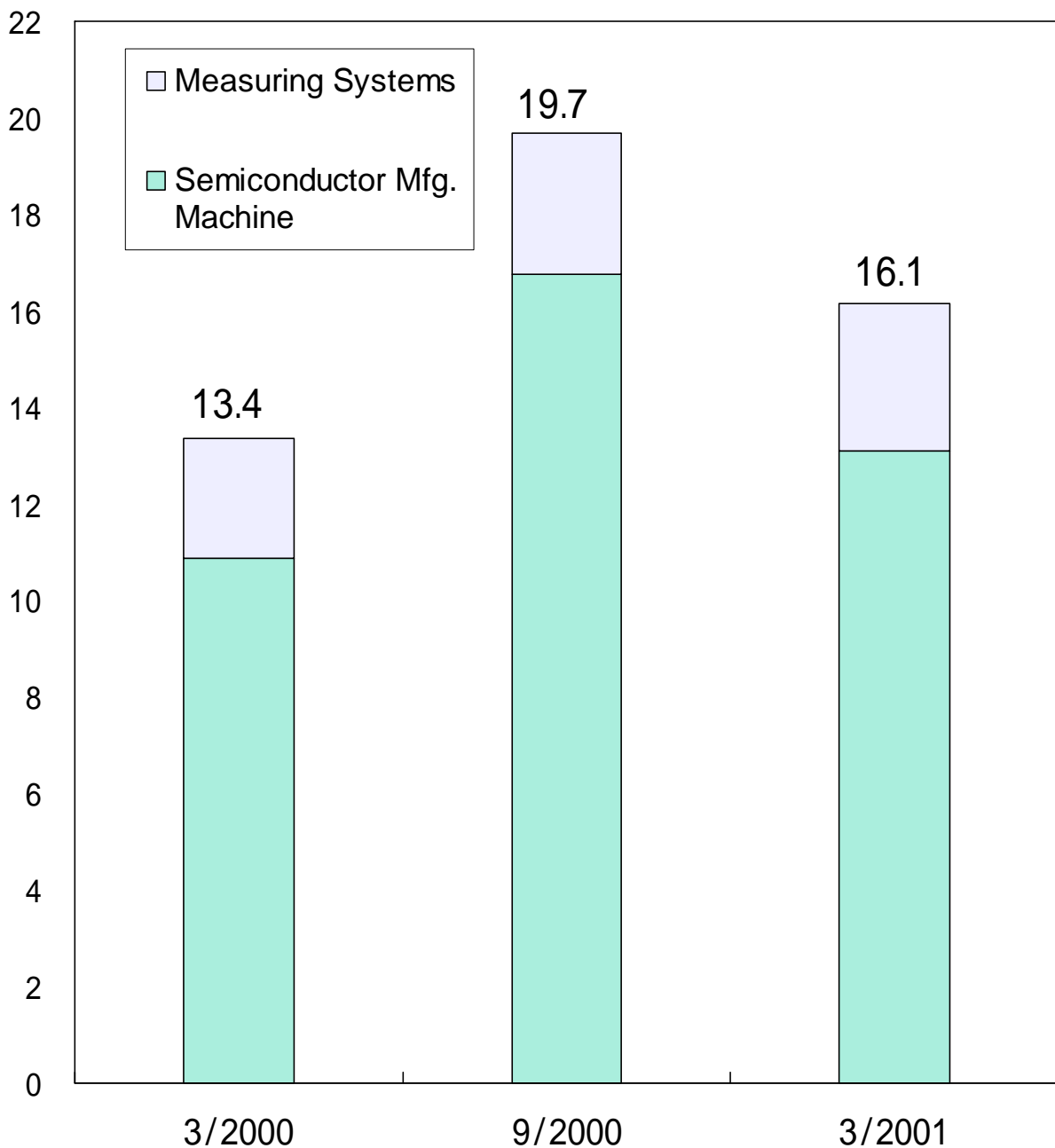


3. Order Backlog (Consolidated)

(Yen Million)

	3/2000	9/2000	3/2001
Semiconductor Mfg. Machine	10,863	16,753	13,089
Measuring Systems	2,496	2,930	3,051
Total	13,360	19,683	16,140

(Yen Billion)



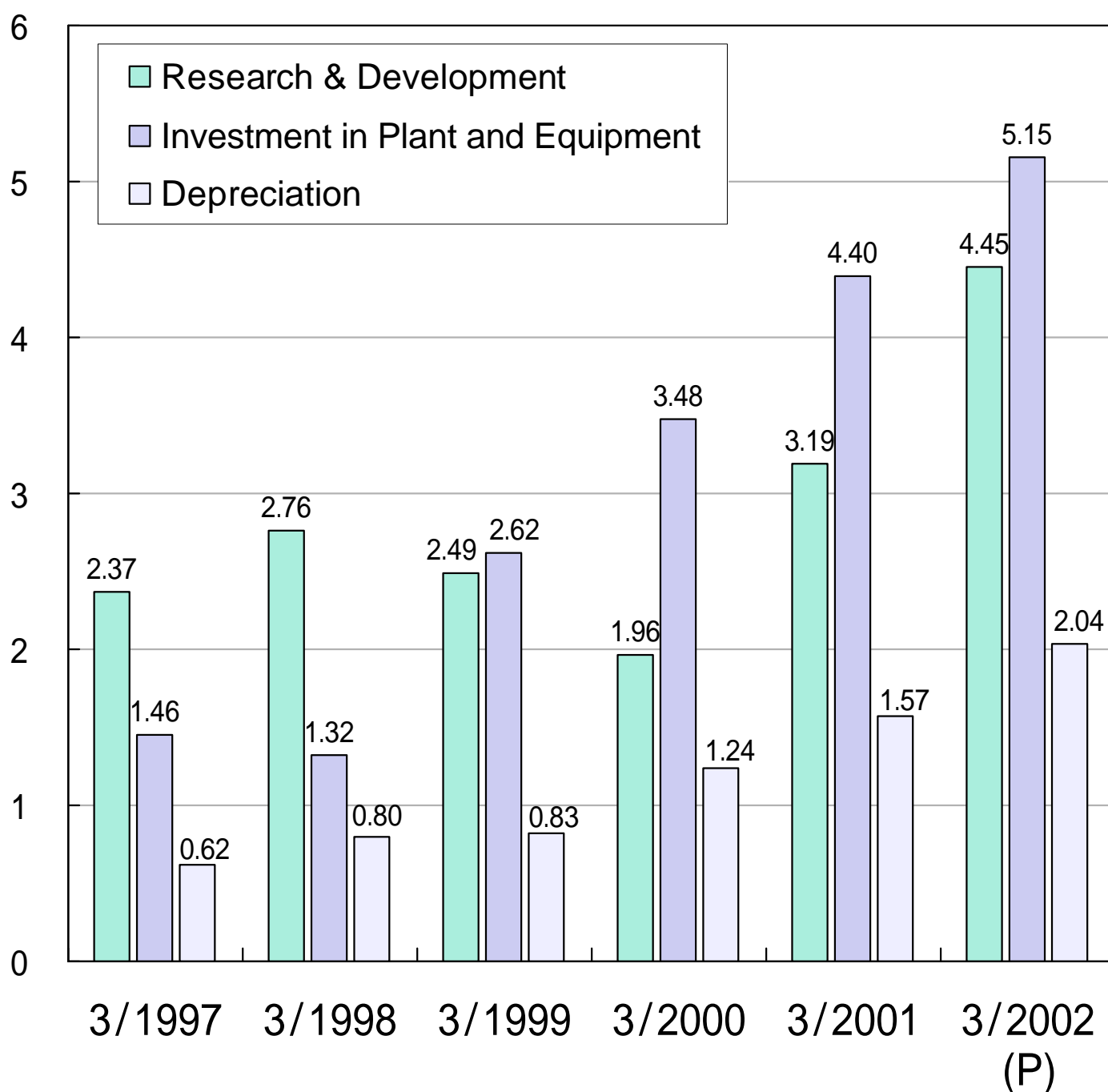
4. R&D, Investment in Plant and Equipment, and Depreciation (Consolidated)



(Yen Million)

	3/1997	3/1998	3/1999	3/2000	3/2001	3/2002 (P)
Research & Development	2,370	2,762	2,487	1,961	3,188	4,450
Investment in Plant and Equipment	1,457	1319	2,617	3,481	4,396	5,150
Depreciation	619	795	825	1244	1,567	2,040

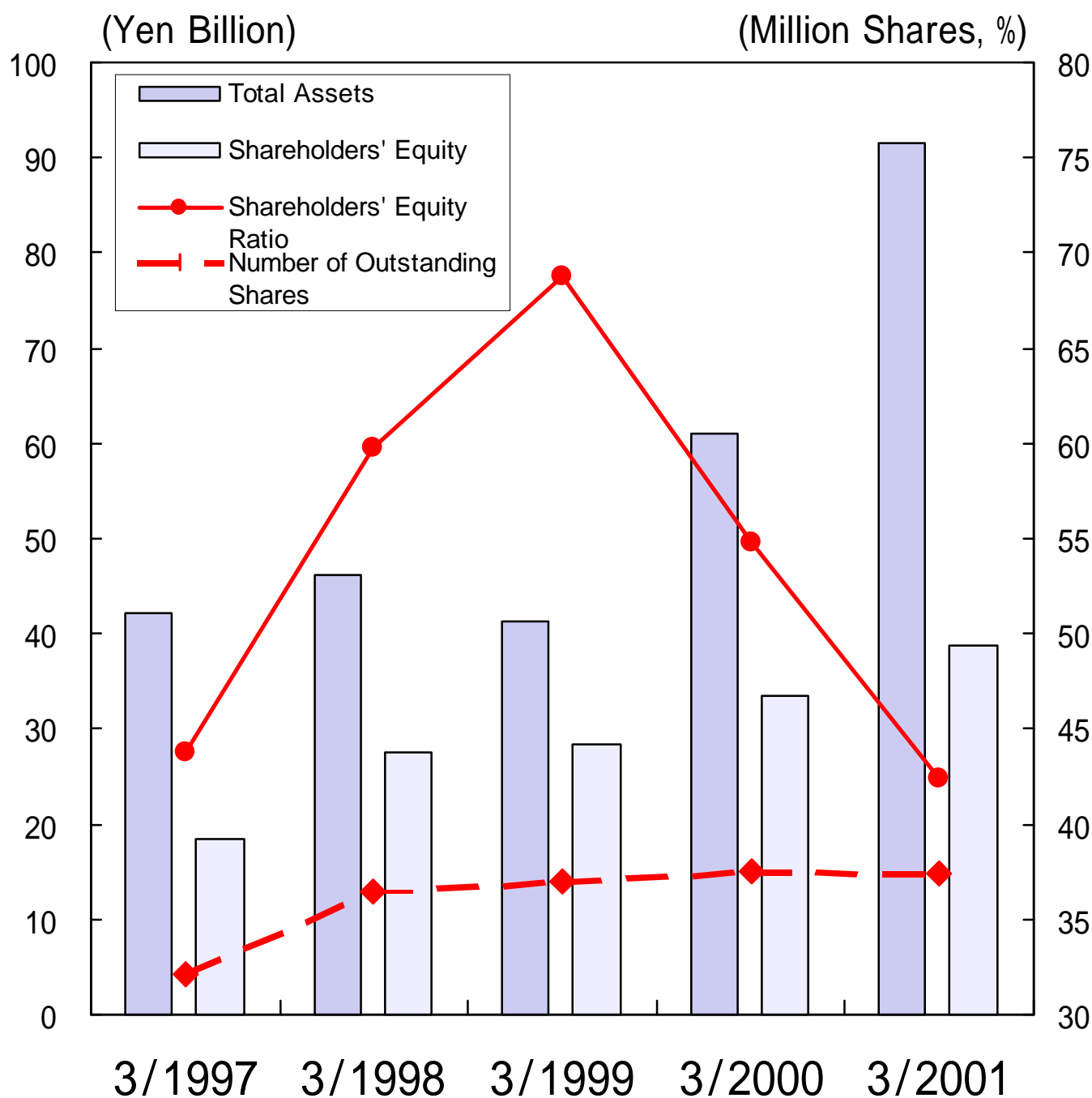
(Yen Billion)



5. Balance Sheet (Consolidated)

(Yen Million)

	3/1997	3/1998	3/1999	3/2000	3/2001
Total Assets	42,257	46,163	41,309	61,007	91,477
Shareholders' Equity	18,502	27,604	28,437	33,433	38,779
Number of Outstanding Shares	32,188,113	36,575,459	37,004,490	37,543,034	37,465,771
Shareholders' Equity Ratio (%)	43.8%	59.8%	68.8%	54.8%	42.4%



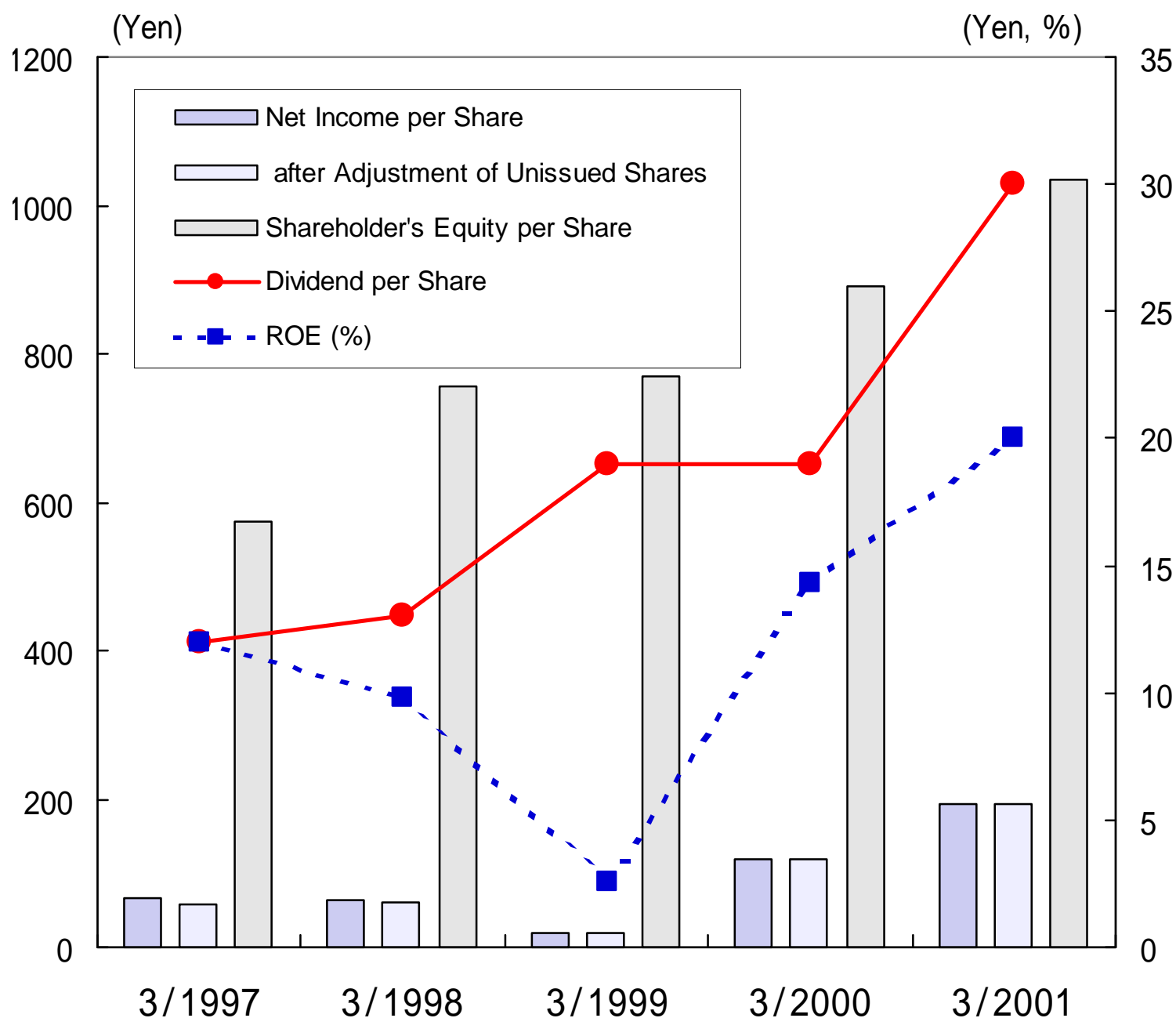


6. Per Share Indexes, and ROE (Consolidated)

(Yen)

	3/1997	3/1998	3/1999	3/2000	3/2001
Number of Outstanding Shares	32,188,113	36,575,459	37,004,490	37,543,034	37,465,771
Net Income per Share	65.89	63.87	19.41	118.43	192.95
" "after Adjustment of Unissued Shares	57.63	59.94	19.15	117.95	192.21
Shareholder's Equity per Share	574.84	754.74	768.47	890.55	1,035.06
Dividend per Share	12	13	13+6*	19	30
ROE (%)	12.0%	9.8%	2.6%	14.3%	20.0%

*memorial dividend



1. Results of Operations (Non-Consolidated)

(Yen Million)

	3/1997	3/1998	3/1999	3/2000	3/2001	9/2001 (P)	3/2002 (P)
Sales	32,140	38,123	29,024	41,501	64,423	24,000	52,000
Operating Income	3,431	4,219	1,697	7,010	12,130	2,800	5,700
Ordinary Income	2,984	4,921	1,714	7,069	12,942	3,000	5,800
Net Income	1,795	1,956	691	4,010	6,688	2,000	3,600

(Yen Billion)

(Yen Billion)

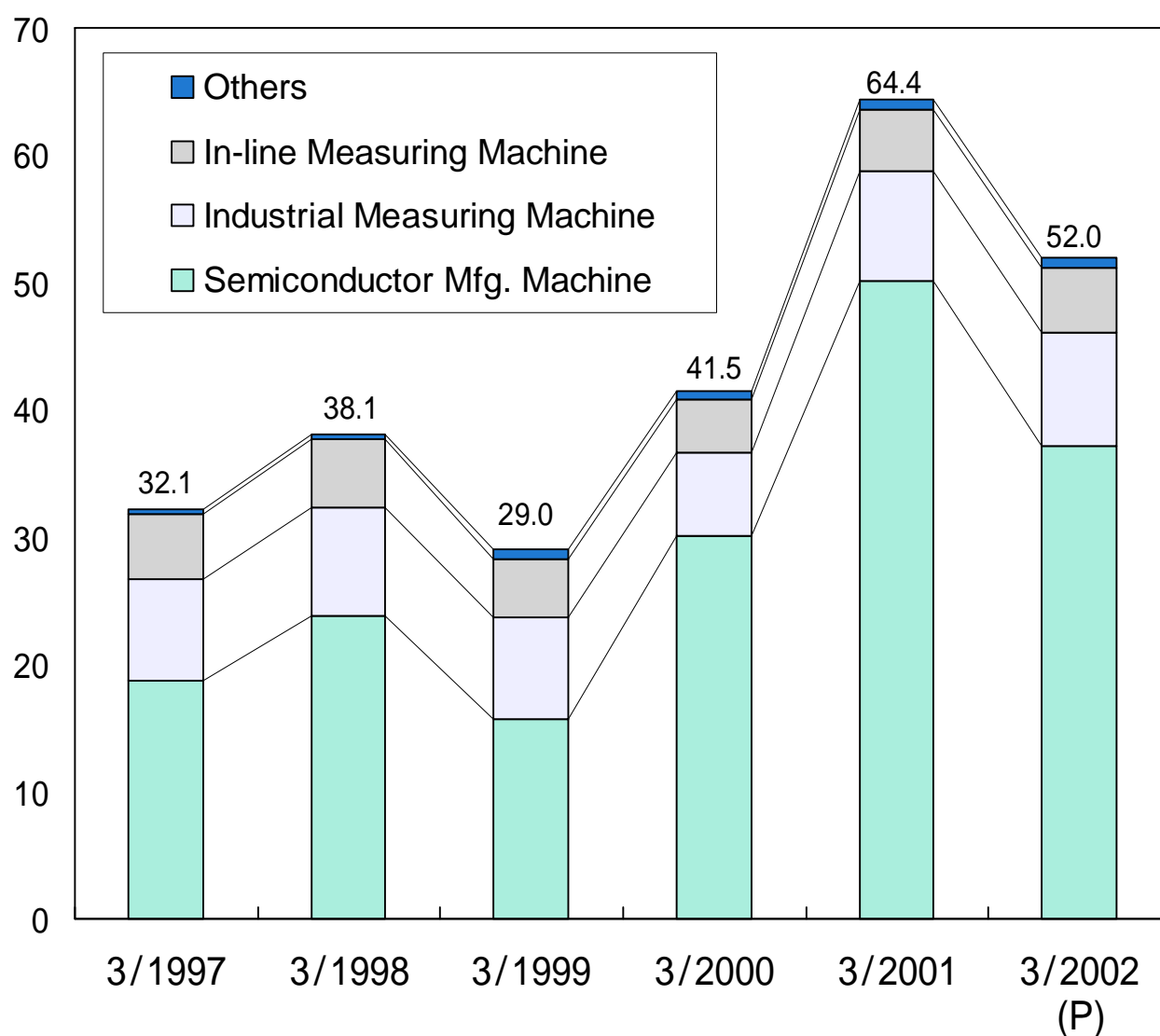


2. Sales by Products Group (Non-Consolidated)

(Yen Million)

	3/1997	3/1998	3/1999	3/2000	3/2001	3/2002 (P)
Semiconductor Mfg. Machine	18,703	23,862	15,699	30,166	50,121	37,200
(Overseas Sales)	(9,473)	(11,619)	(8,178)	(14,984)	(26,326)	-
Industrial Measuring Machine	8,031	8,421	8,030	6,526	8,575	8,800
(Overseas Sales)	(1,136)	(1,059)	(1,033)	(725)	(1,125)	-
In-line Measuring Machine	5,001	5,421	4,478	4,143	4,906	5,200
(Overseas Sales)	(314)	(367)	(195)	(261)	(398)	-
Others	403	417	816	665	820	800
(Overseas Sales)	(32)	(19)	(201)	(43)	(47)	-
Total	32,140	38,123	29,024	41,501	64,423	52,000
(Overseas Sales)	(10,956)	(13,066)	(9,608)	(16,015)	(27,896)	-

(Yen Billion)

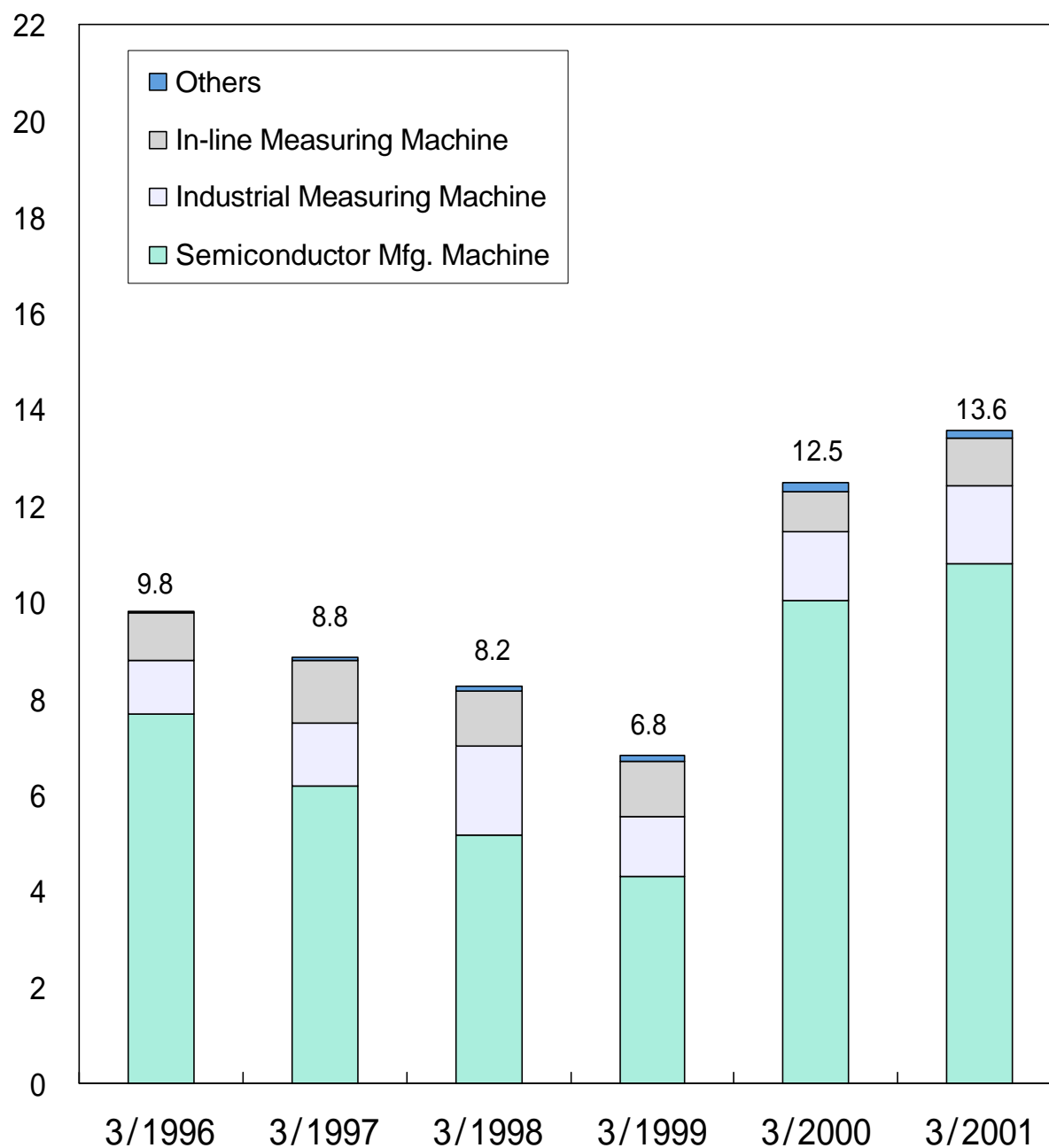


3. Order Backlog (Non-Consolidated)

(Yen Million)

	3/1996	3/1997	3/1998	3/1999	3/2000	3/2001
Semiconductor Mfg. Machine	7,685	6,164	5,167	4,293	10,026	10,788
Industrial Measuring Machine	1,110	1,320	1,824	1,234	1,427	1,618
In-line Measuring Machine	989	1,289	1,167	1,153	843	996
Others	29	8	74	127	190	161
Total	9,814	8,783	8,233	6,808	12,487	13,564

(Yen Billion)



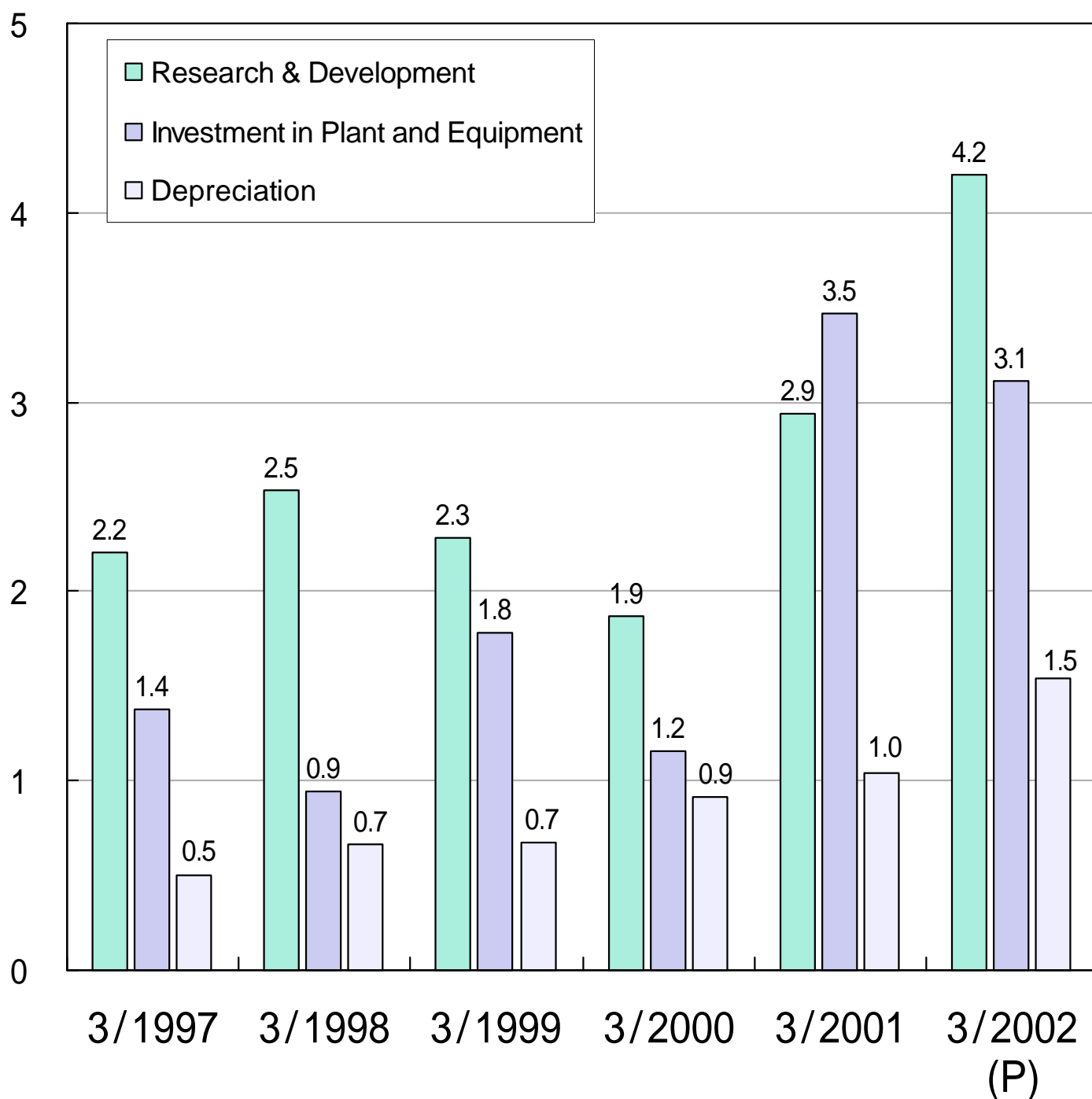
4.R&D, Investment in Plant and Equipment, and Depreciation (Non-Consolidated)



(Yen Million)

	3/1997	3/1998	3/1999	3/2000	3/2001	3/2002 (P)
Research & Development	2,221	2,531	2,285	1,866	2,941	4,200
Investment in Plant and Equipment	1,373	943	1,780	1,153	3,470	3,110
Depreciation	503	662	673	920	1,043	1,540

(Yen Billion)



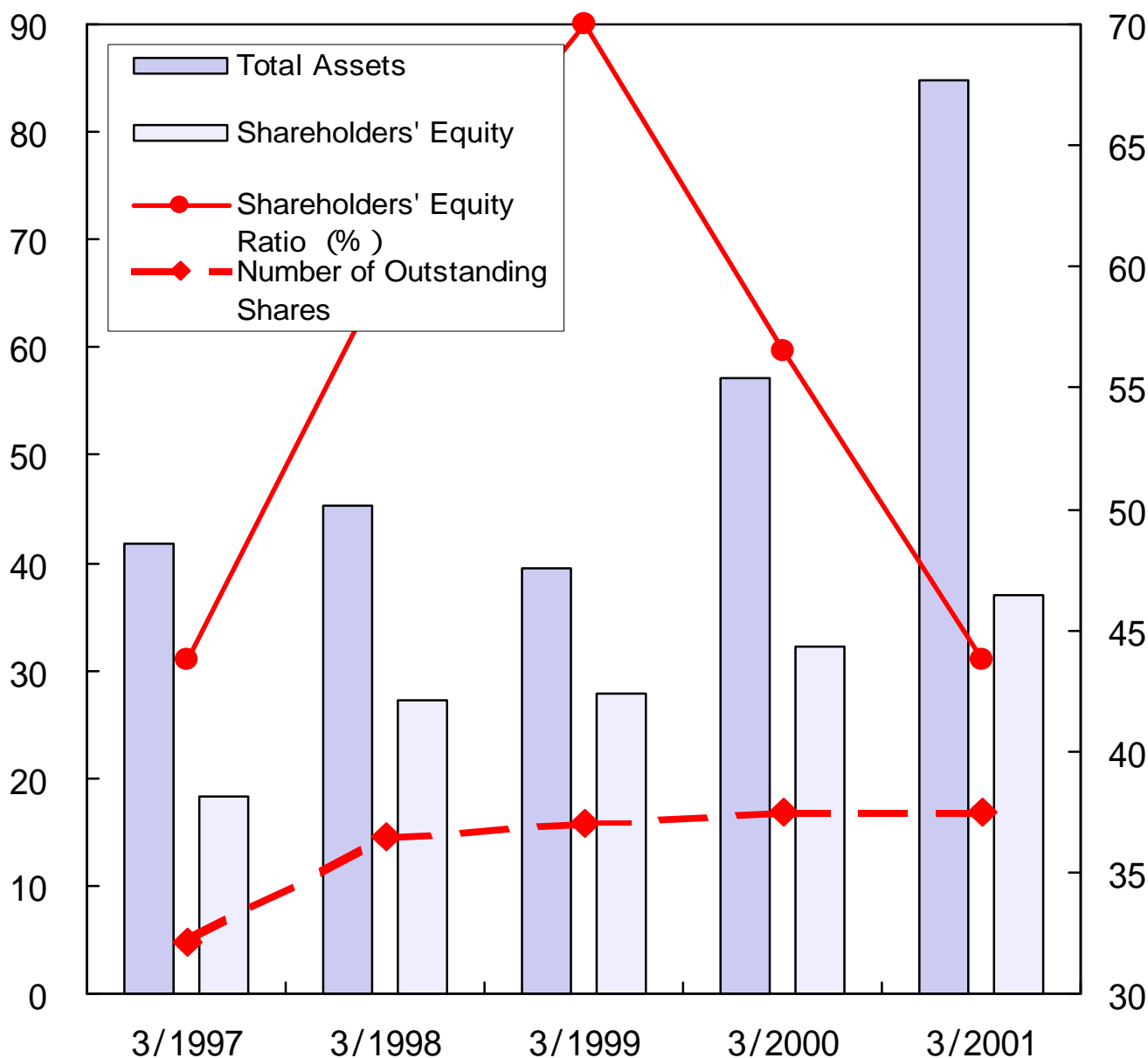
5. Balance Sheet (Non-Consolidated)

(Yen Million)

	3/1997	3/1998	3/1999	3/2000	3/2001
Total Assets	41,772	45,316	39,551	57,166	84,788
Shareholders' Equity	18,314	27,134	27,952	32,299	37,096
Number of Outstanding Shares	32,188,113	36,575,459	37,004,490	37,543,034	37,465,771
Shareholders' Equity Ratio (%)	43.8%	59.9%	70.7%	56.5%	43.8%

(Yen Billion)

(Million Share, %)





6. Per Share Indexes, and ROE (Non-Consolidated)

	(Yen)					
	3/1996	3/1997	3/1998	3/1999	3/2000	3/2001
Number of Outstanding Shares	32,188,113	32,188,113	36,575,459	37,004,490	37,543,034	37,465,771
Net Income per Share	65.63	55.77	55.48	18.74	107.41	178.32
" "after Adjustment of Unissued Shares	-	48.93	52.1	18.49	106.98	177.64
Shareholders' Equity per Share	525.63	569	741.87	755.38	860.33	990.13
Dividend per Share	10	12	13	13+6*	19	30
ROE (%)	13.2%	10.2%	8.6%	2.5%	13.3%	19.3%

*memorial dividend

