



TOKYO SEIMITSU

Reference Data for Fiscal Year 2001 Interim Results

Table of Contents

. Consolidated

1. Results of Operations
2. Sales by Products Group
3. R & D, Investment in
Plant and Equipment, and Depreciation
4. Balance Sheet
5. Per Stock Indexes, and ROE

.Non Consolidated

1. Results of Operations
2. Sales by Products Group
3. Order Backlog
4. R & D, Investment in
Plant and Equipment, and Depreciation
5. Balance Sheet
6. Per Stock Indexes, and ROE

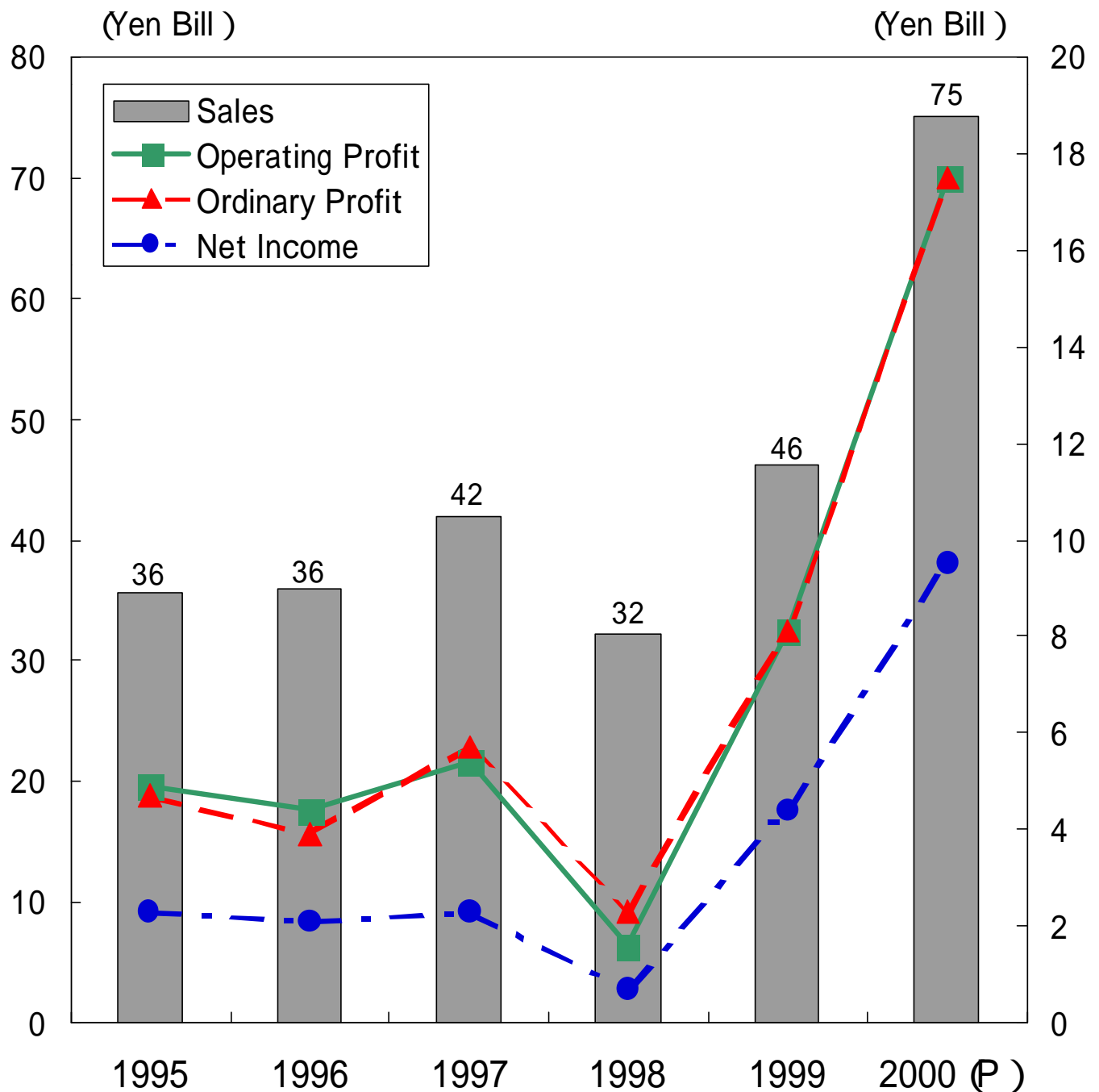
Tokyo Seimitsu co., Ltd.



1. Results of Operations (Consolidated)

(Yen Mil)

Fiscal Year	1995	1996	1997	1998	1999	2000/9	2001/3 (P)
Sales	35,671	35,892	42,349	32,153	46,176	34,636	75,000
Operating Profit	4,905	4,397	5,422	1,621	8,104	7,161	17,500
Ordinary Profit	4,728	3,889	5,686	2,293	8,138	7,253	17,500
Net Income	2,271	2,120	2,251	715	4,422	3,245	9,500

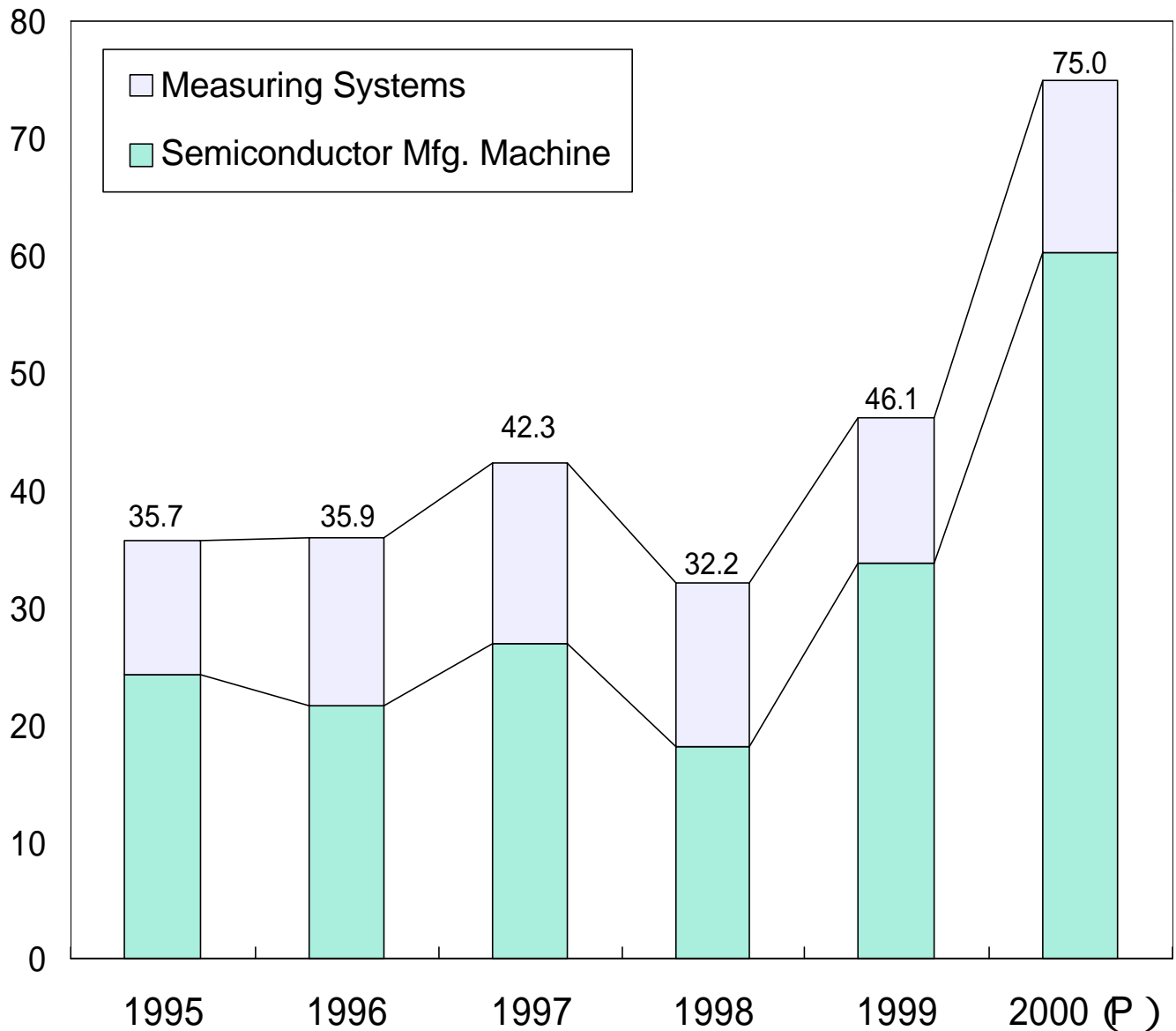


2. Sales by Products Group

(Yen Mil)

Fiscal Year	1995	1996	1997	1998	1999	2000/9	2000 (P)
Semiconductor Mfg. Machine	24,276	21,564	27,018	18,150	33,811	27,409	60,300
Measuring Systems	11,395	14,327	15,330	14,002	12,364	7,226	14,700
Total	35,671	35,892	42,349	32,153	46,176	34,636	75,000

(Yen Bill)



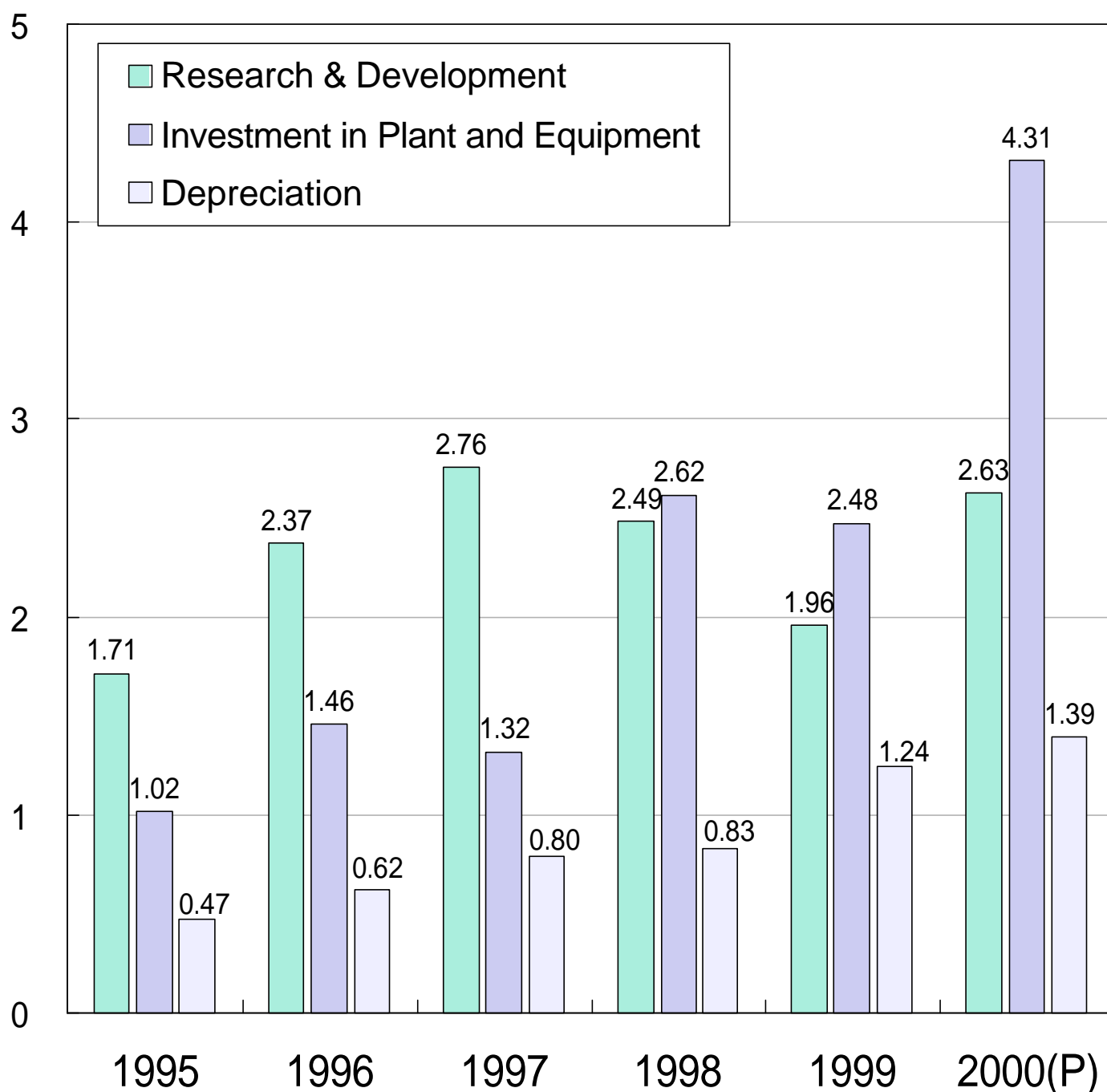
3.R&D, Investment in Plant and Equipment, and Depreciation



(Yen Mil)

Fiscal Year	1995	1996	1997	1998	1999	2000 (P)
Research & Development	1,710	2,370	2,762	2,487	1,961	2,628
Investment in Plant and Equipment	1018	1,457	1319	2,617	2,481	4,312
Depreciation	470	619	795	825	1244	1,393

(Yen Bill)

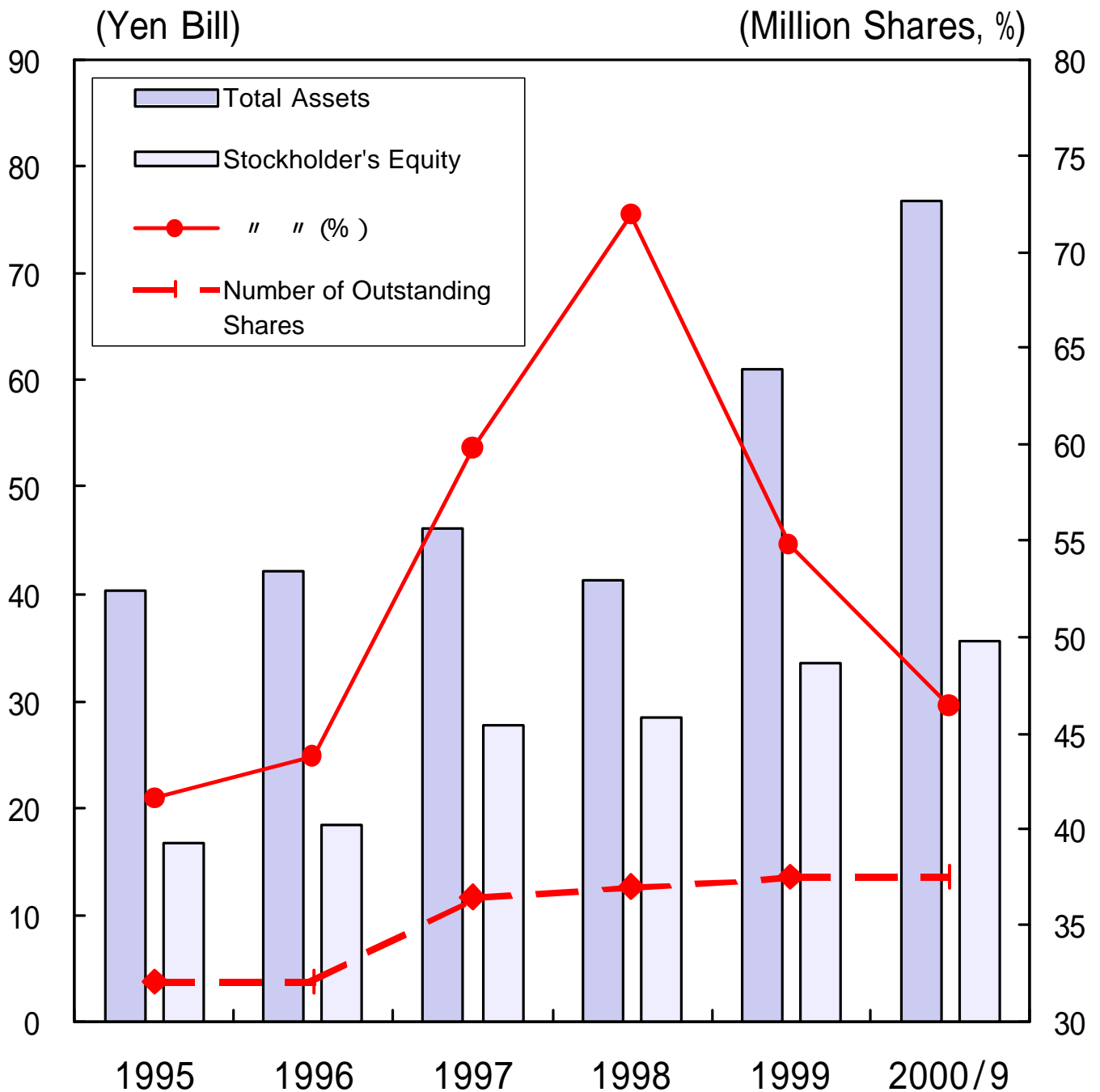




4. Balance Sheet

(Yen Mil)

Fiscal Year	1995	1996	1997	1998	1999	2000/9
Total Assets	40,373	42,257	46,163	41,309	61,007	76,885
Stockholder's Equity	16,783	18,502	27,604	28,437	33,433	35,649
Number of Outstanding Shares	32,188,113	32,188,113	36,575,459	37,004,490	37,543,034	37,525,224
" " (%)	41.6%	43.8%	59.8%	71.9%	54.8%	46.4%



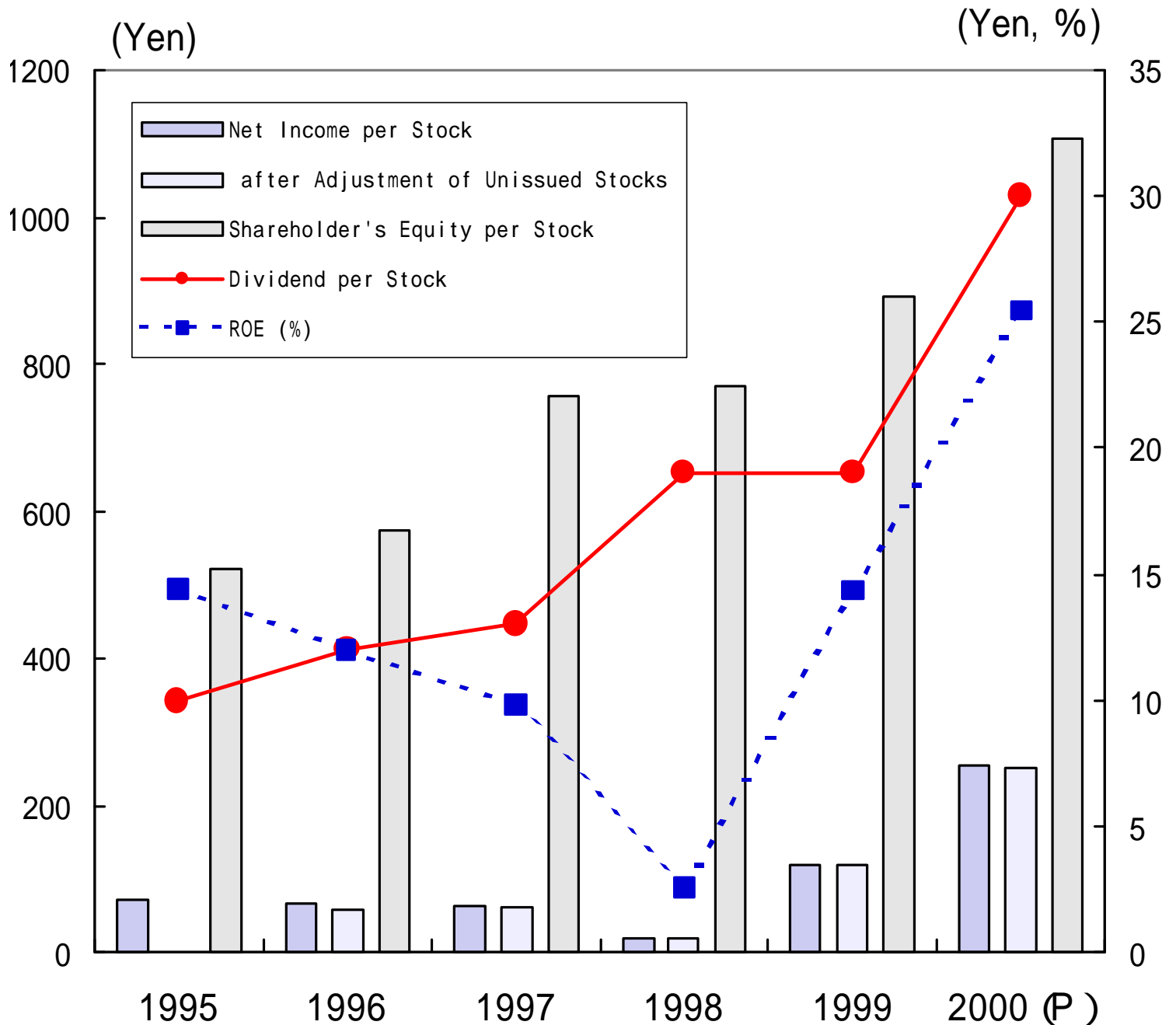


5. Per Stock Indexes, and ROE

(Yen)

Fiscal Year	1995	1996	1997	1998	1999	2000/9	2001/3(P)
Number of Outstanding Shares	32,188,113	321,188,113	36,575,459	37,004,490	37,543,034	37,525,224	37,525,224
Net Income per Stock	70.58	65.89	63.87	19.41	118.43	86.46	253.16
" "after Adjustment of Unissued Stocks	-	57.63	59.94	19.15	117.95	86.1	250.18
Shareholder's Equity per Stock	521.43	574.84	754.74	768.47	890.55	950.02	1106.27
Dividend per Stock	10	12	13	13+6 *	19	15	30
ROE (%)	14.4%	12.0%	9.8%	2.6%	14.3%	18.8%	25.4%

*memorial dividend





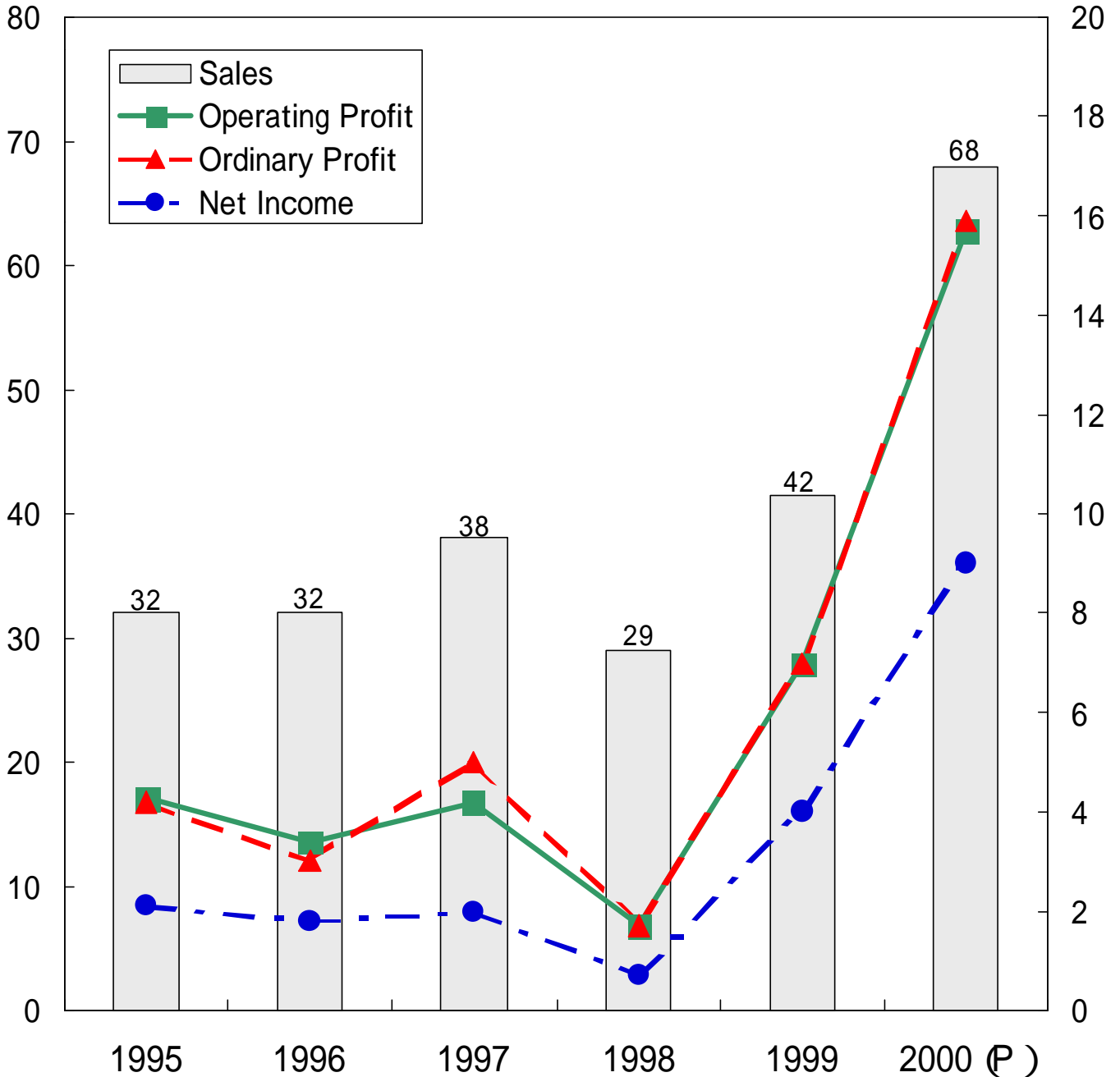
1. Results of Operations (Non Consolidated)

(Yen Mil)

Fiscal Year	1995	1996	1997	1998	1999	2000/9	2001/3(P)
Sales	31,956	32,140	38,123	29,024	41,501	30,882	68,000
Operating Profit	4,337	3,431	4,219	1,697	7,010	5,984	15,700
Ordinary Profit	4,150	2,984	4,921	1,714	7,069	6,296	15,900
Net Income	2,112	1,795	1,956	691	4,010	3,010	9,000

(Yen Bill)

(Yen Bill)

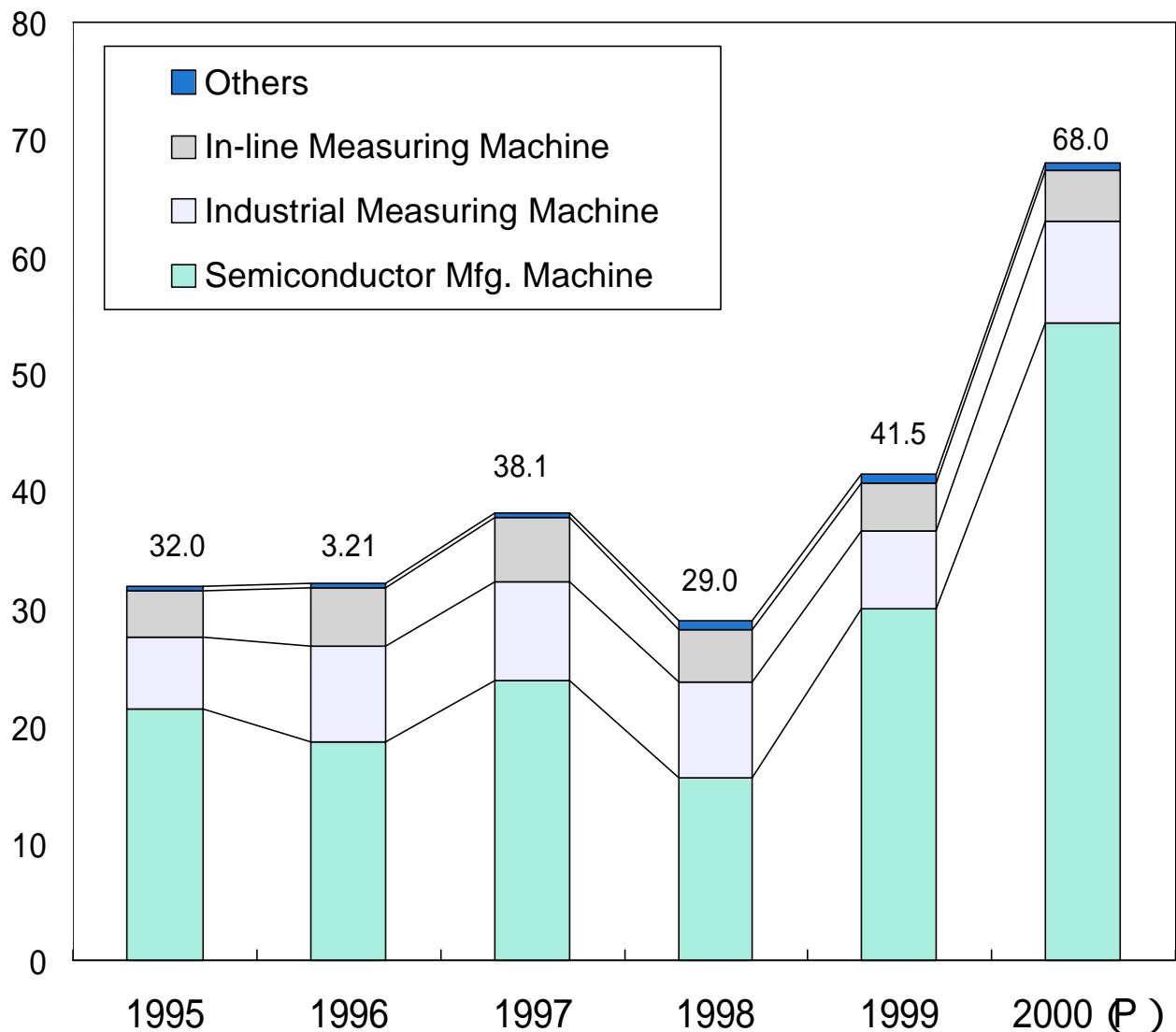


2. Sales by Products Group

(Yen Mil)

Fiscal Year	1995	1996	1997	1998	1999	2000/9	2001/3 (P)
Semiconductor Mfg. Machine	21,485	18,703	23,862	15,699	30,166	24,276	54,400
(Overseas Sales)	(9,858)	(9,473)	(11,619)	(8,178)	(14,984)	(13,385)	-
Industrial Measuring Machine	6,090	8,031	8,421	8,030	6,526	3,946	8,600
(Overseas Sales)	(850)	(1,136)	(1,059)	(1,033)	(725)	(489)	-
In-line Measuring Machine	4,046	5,001	5,421	4,478	4,143	2,334	4,400
(Overseas Sales)	(249)	(314)	(367)	(195)	(261)	(229)	-
Others	333	403	417	816	665	325	600
(Overseas Sales)	(43)	(32)	(19)	(201)	(43)	(24)	-
Total	31,956	32,140	38,123	29,024	41,501	30,882	68,000
(Overseas Sales)	(11,002)	(10,956)	(13,066)	(9,608)	(16,015)	(14,129)	-

(Yen Bill)



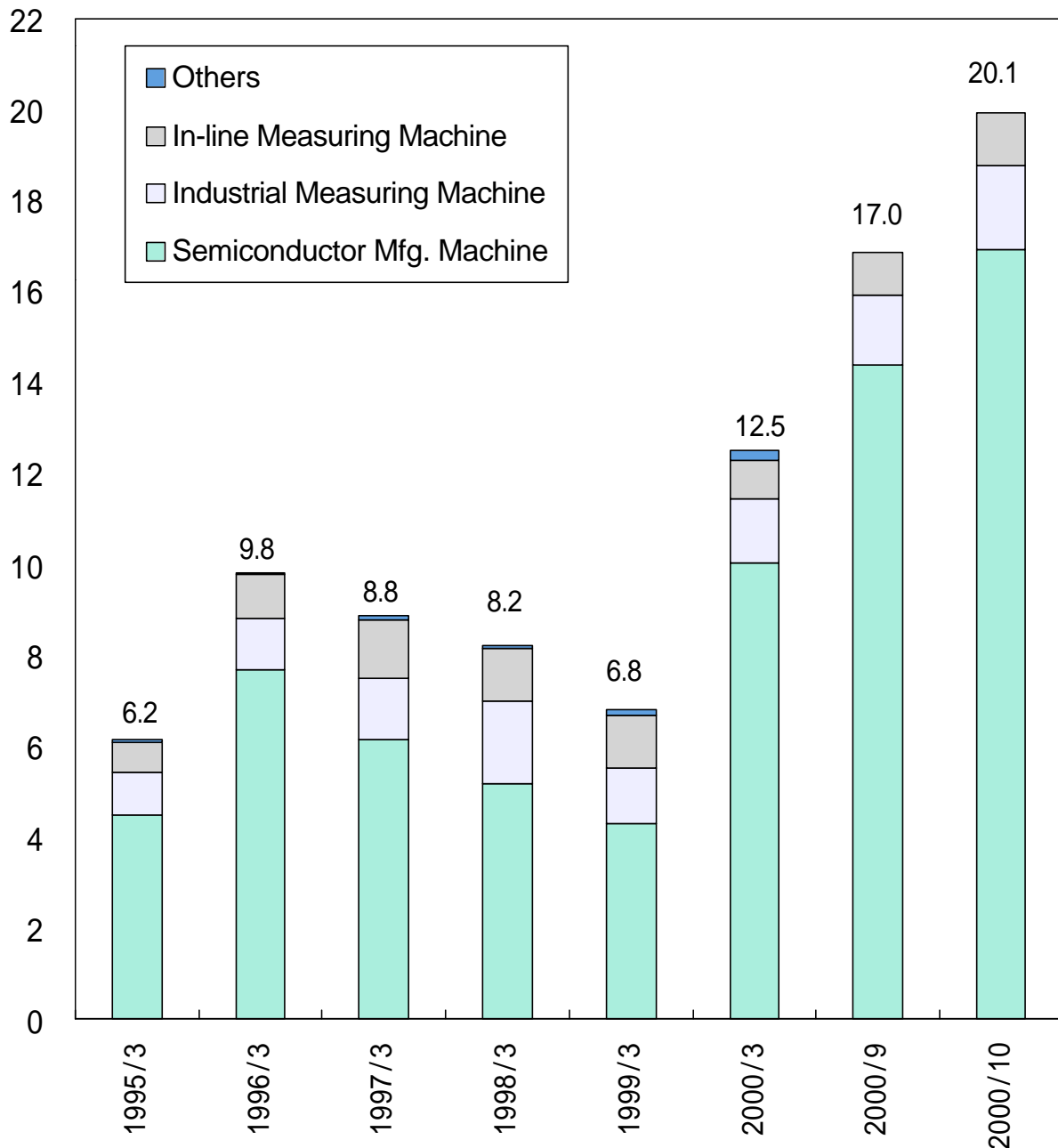
3. Order Backlog



(Yen Mil)

	1995/3	1996/3	1997/3	1998/3	1999/3	2000/3	2000/9	2000/10
Semiconductor Mfg. Machine	4,515	7,685	6,164	5,167	4,293	10,026	14,391	16,921
Industrial Measuring Machine	892	1,110	1,320	1,824	1,234	1,427	1,533	1,846
In-line Measuring Machine	698	989	1,289	1,167	1,153	843	940	1,174
Others	53	29	8	74	127	190	206	202
Total	6,160	9,814	8,783	8,233	6,808	12,487	17,072	20,144

(Yen Bill)



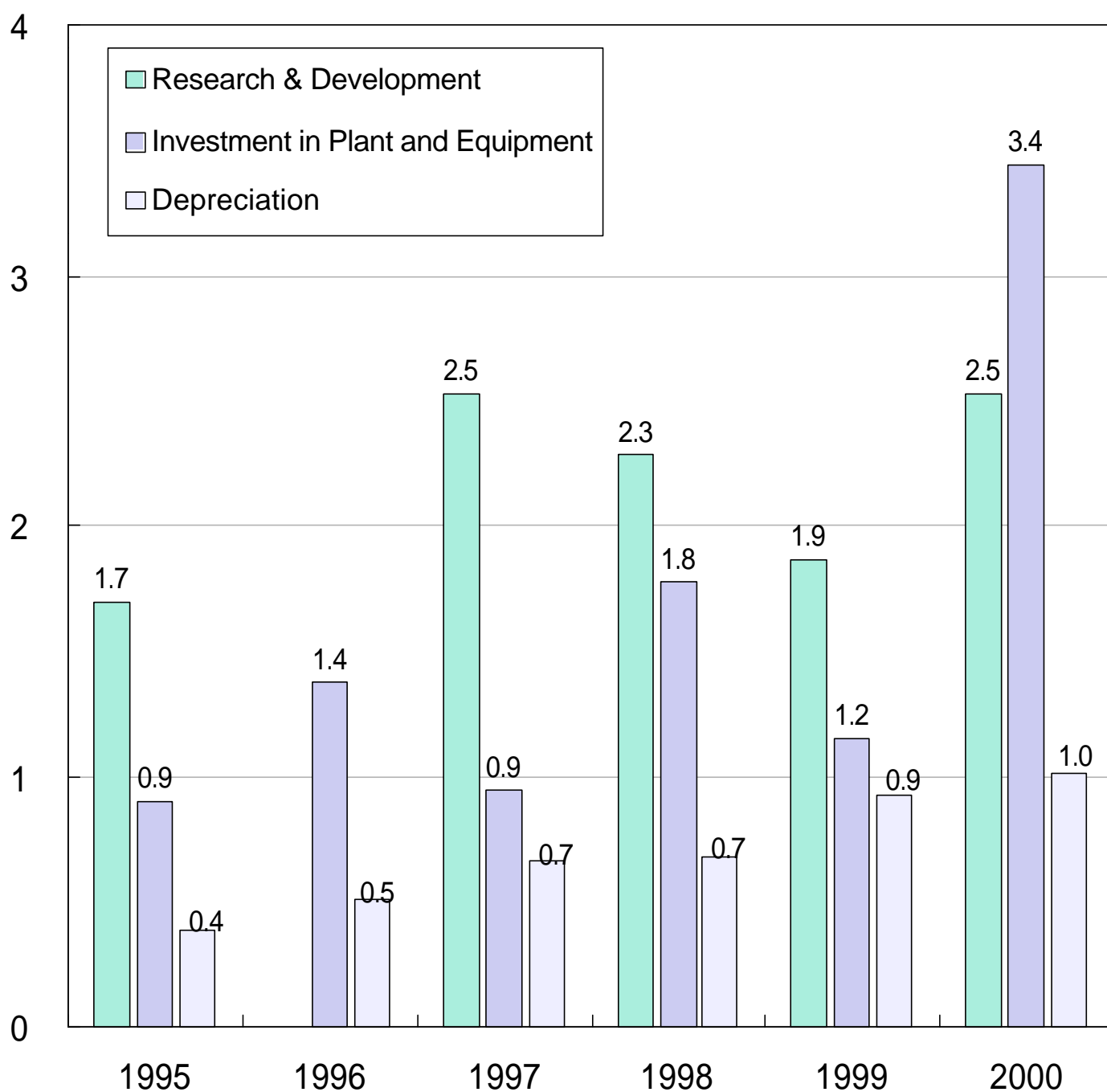
4.R&D, Investment in Plant and Equipment, and Depreciation



(Yen Mil)

Fiscal Year	1995	1996	1997	1998	1999	2000 (P)
Research & Development	1,698	2,221	2,531	2,285	1,866	2,528
Investment in Plant and Equipment	901	1,373	943	1,780	1,153	3,440
Depreciation	384	503	662	673	920	1,013

(Yen Bill)



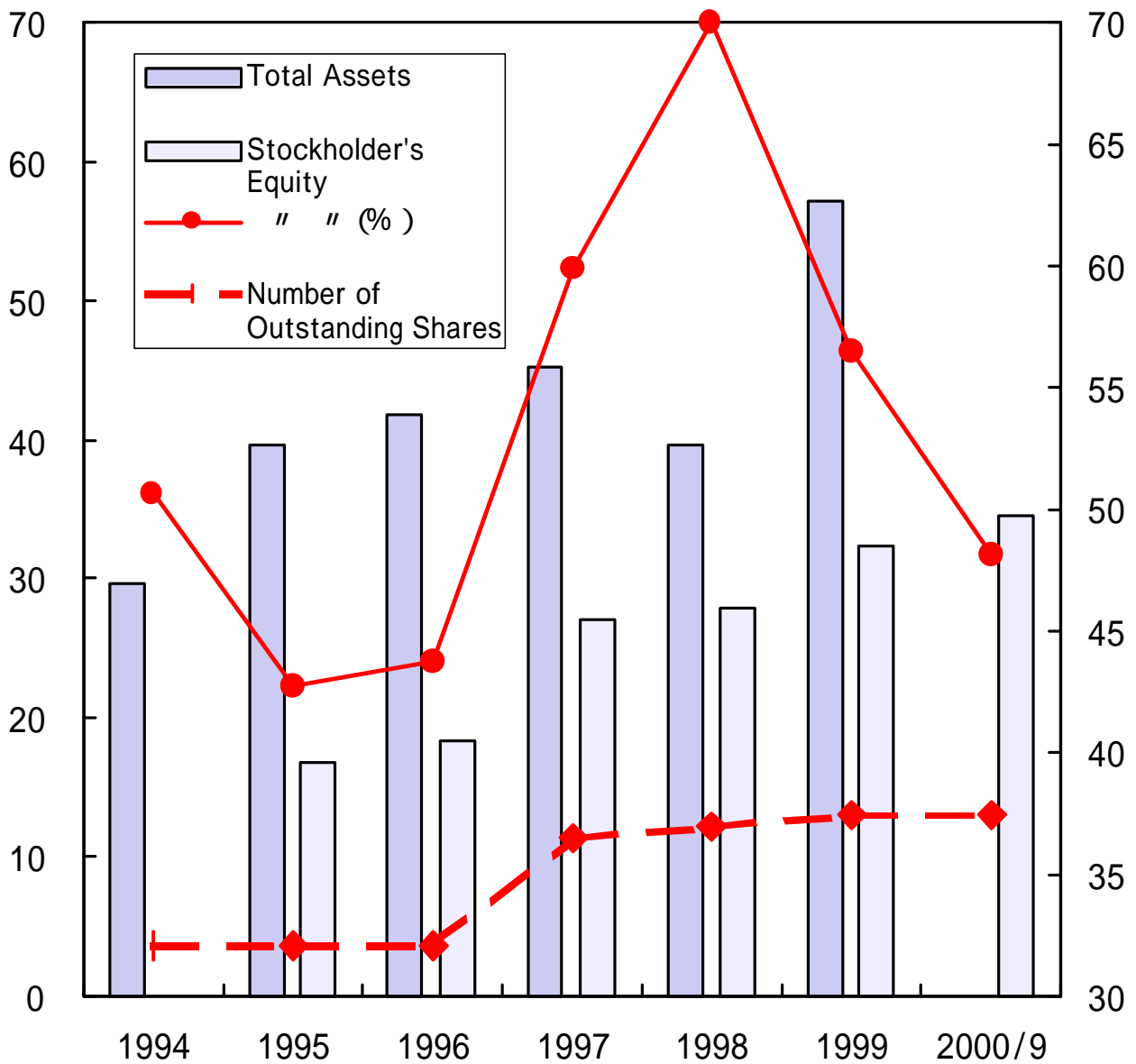
5. Balance Sheet

(Yen Mil)

Fiscal Year	1994	1995	1996	1997	1998	1999	2000/9
Total Assets	29,775	39,613	41,772	45,316	39,551	57,166	71,708
Stockholder's Equity	15,109	16,913	18,314	27,134	27,952	32,299	34,465
Number of Outstanding Shares	32,188,113	32,188,113	32,188,113	36,575,459	37,004,490	37,543,034	37,525,224
" " (%)	50.7%	42.7%	43.8%	59.9%	70.7%	56.5%	48.1%

(Yen Bill)

(Million Shares, %)





6. Per Stock Indexes, and ROE

(Yen)

Fiscal Year	1994	1995	1996	1997	1998	1999	2000/9	2001/3 (P)
Number of Outstanding Shares	32,188,113	32,188,113	321,188,113	36,575,459	37,004,490	37,543,034	37,525,224	37,525,224
Net Income per Stock	19.75	65.63	55.77	55.48	18.74	107.41	80.19	239.84
" "after Adjustment of Unissued Stocks	-	-	48.93	52.1	18.49	106.98	79.85	237.01
Shareholder's Equity per Stock	469.42	525.63	569	741.87	755.38	860.33	918.45	1069.15
Dividend per Stock	7	10	12	13	13+6*	19	15	30
ROE (%)	4.3%	13.2%	10.2%	8.6%	2.5%	13.3%	18.0%	24.9%

*memorial dividend

