

Tokyo Seimitsu Co., Ltd.



Reference Data for FY2007 Interim Earnings

Contents

I. Consolidated

1. Operating Results
2. Sales by Product Group
3. Order Backlog
4. R&D, Capex & Depreciation
5. Balance Sheet
6. Per Share Indexes, ROE
7. Quarterly Orders
8. Quarterly Sales

II. Non-Consolidated

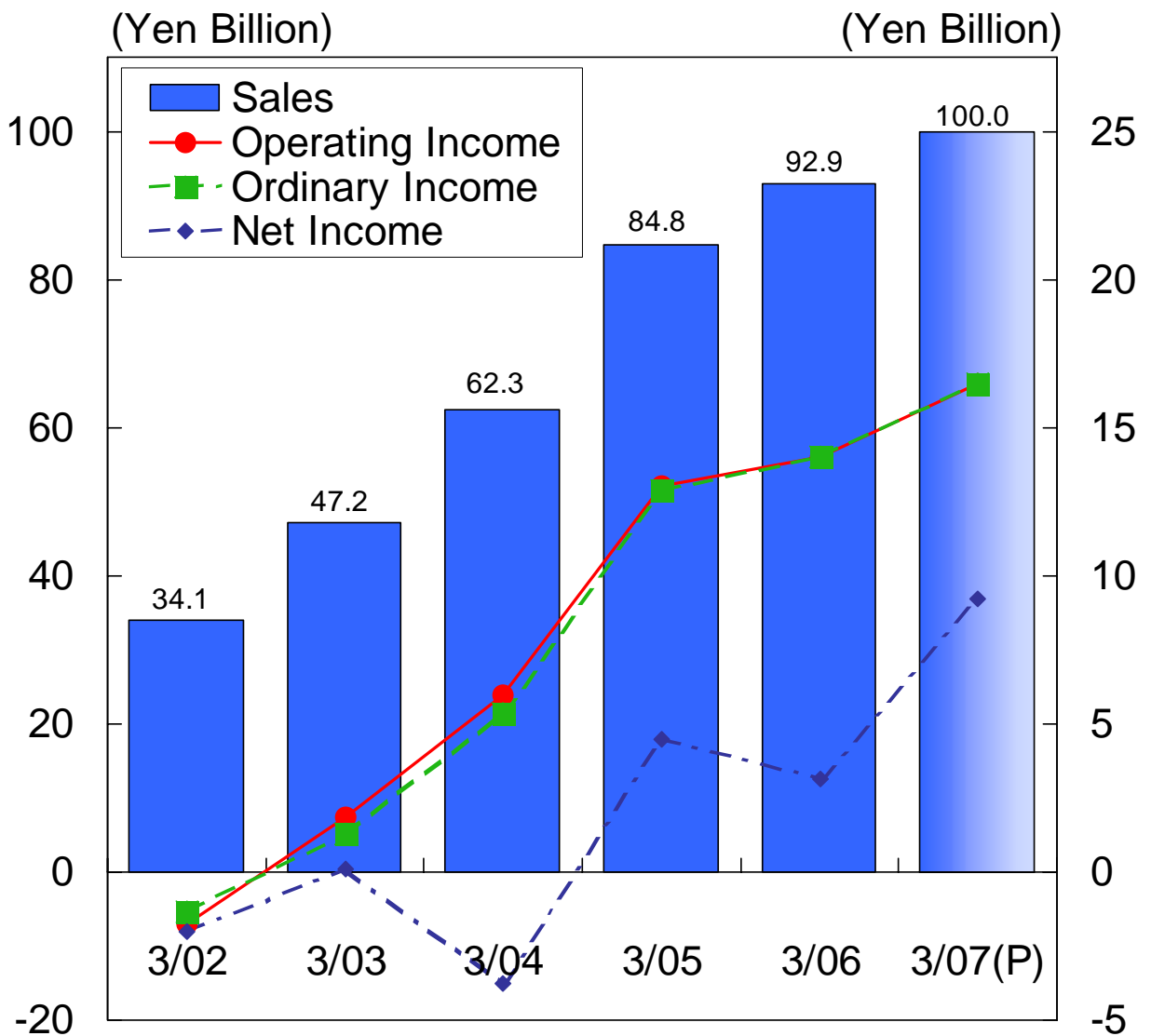
1. Operating Results
2. Sales by Product Group
3. Order Backlog
4. R&D, Capex & Depreciation
5. Balance Sheet
6. Per Share Indexes, ROE
7. Quarterly Orders
8. Quarterly Sales

November 16, 2006

1. Operating Results (Consolidated)



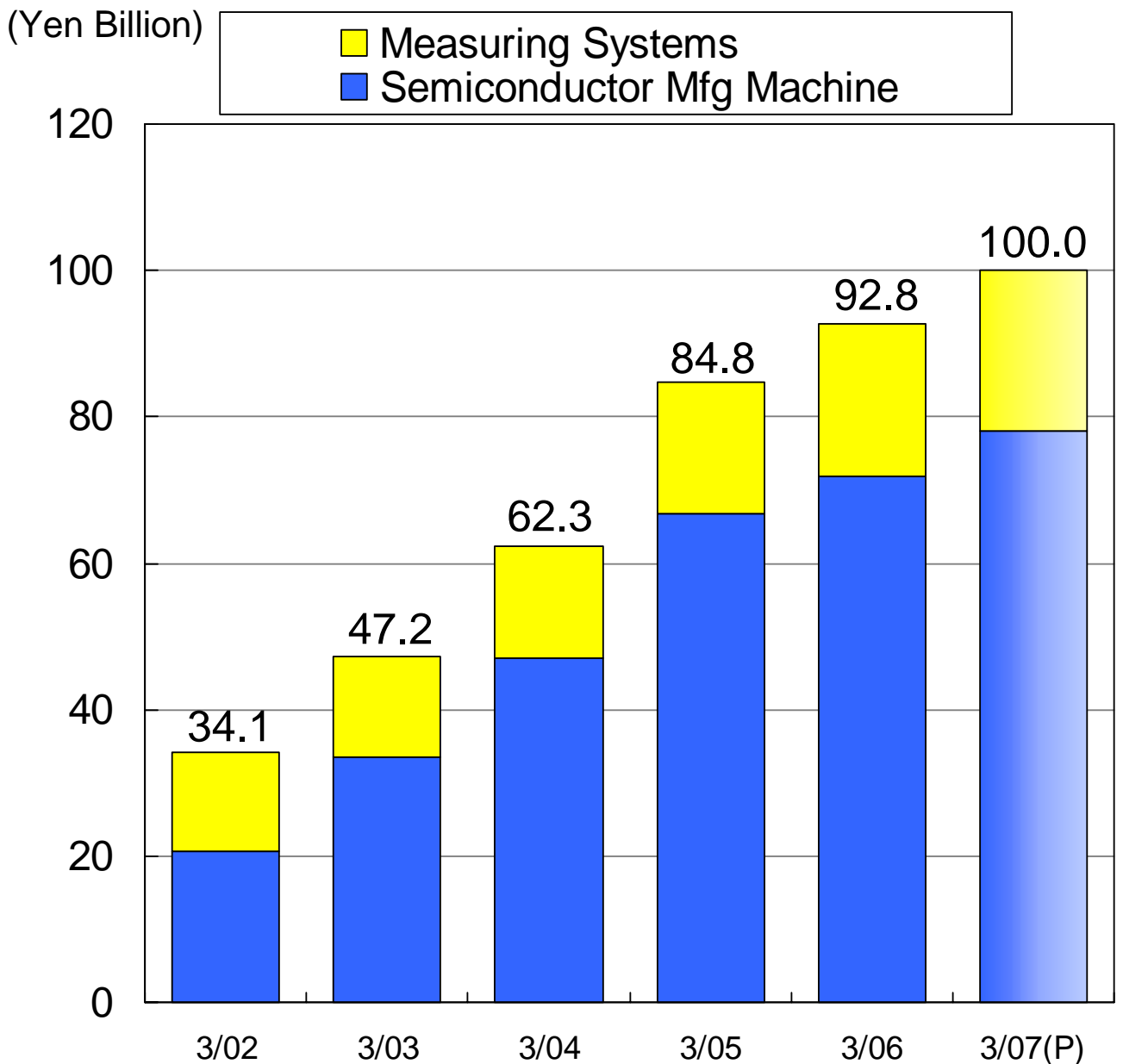
	3/02	3/03	3/04	3/05	3/06	Interim 9/06	Full Year 3/07(P)
Sales	34,064	47,171	62,324	84,750	92,845	51,839	100,000
Operating Income	-1,757	1,860	5,947	13,051	13,991	8,929	16,500
Ordinary Income	-1,336	1,259	5,328	12,885	14,031	8,840	16,500
Net Income	-2,026	74	-3,783	4,459	3,125	4,999	9,200



2. Sales by Product Group (Consolidated)



	3/02	3/03	3/04	3/05	3/06	Interim 9/06	Full Year 3/07(P)
Semiconductor Mfg. Machine	20,607	33,561	47,045	66,669	71,825	41,029	78,000
Measuring Systems	13,457	13,610	15,279	18,081	21,020	10,810	22,000
Total	34,064	47,171	62,325	84,750	92,845	51,839	100,000

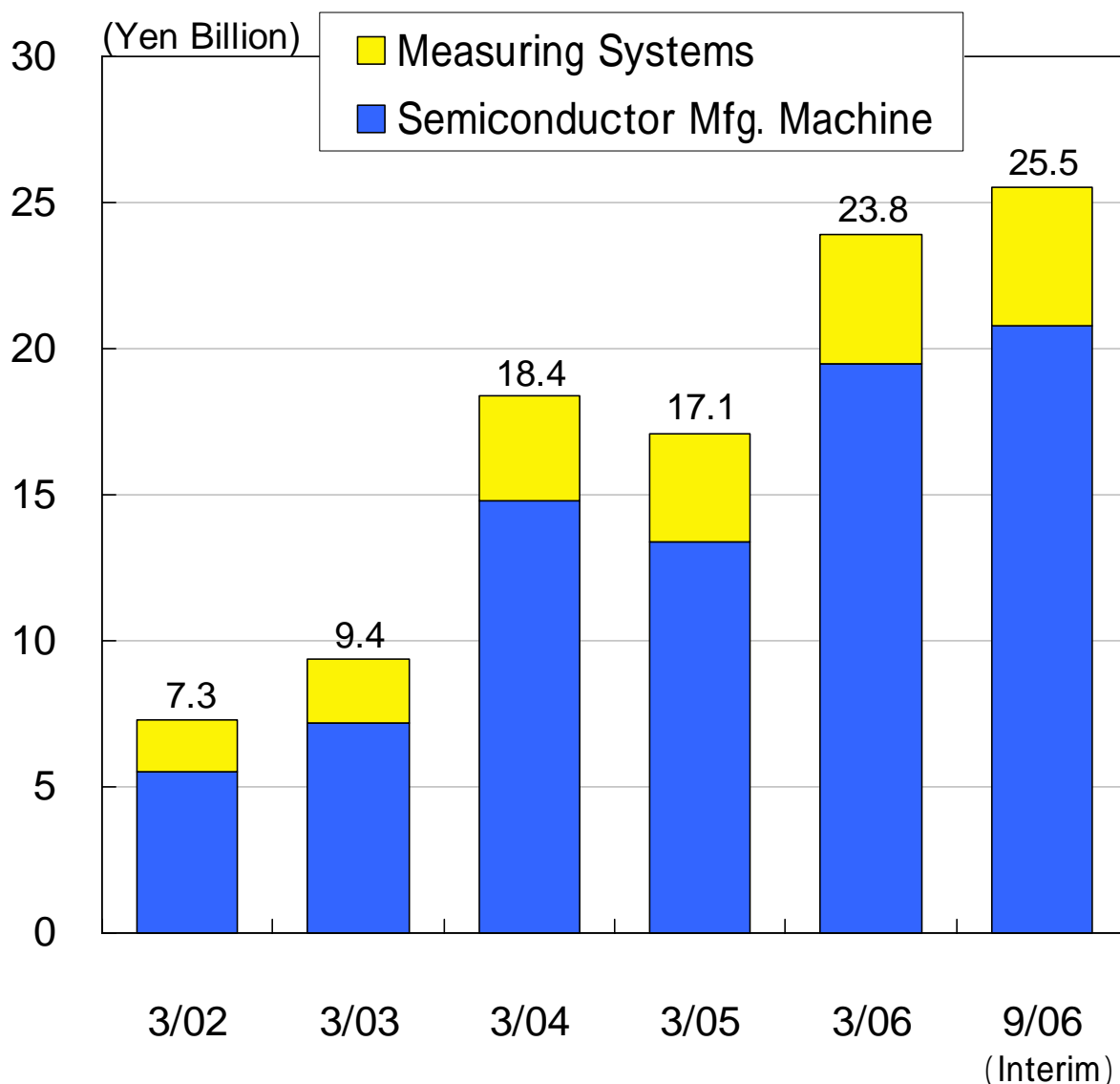


3. Order Backlog (Consolidated)



(Yen Million)
Interim

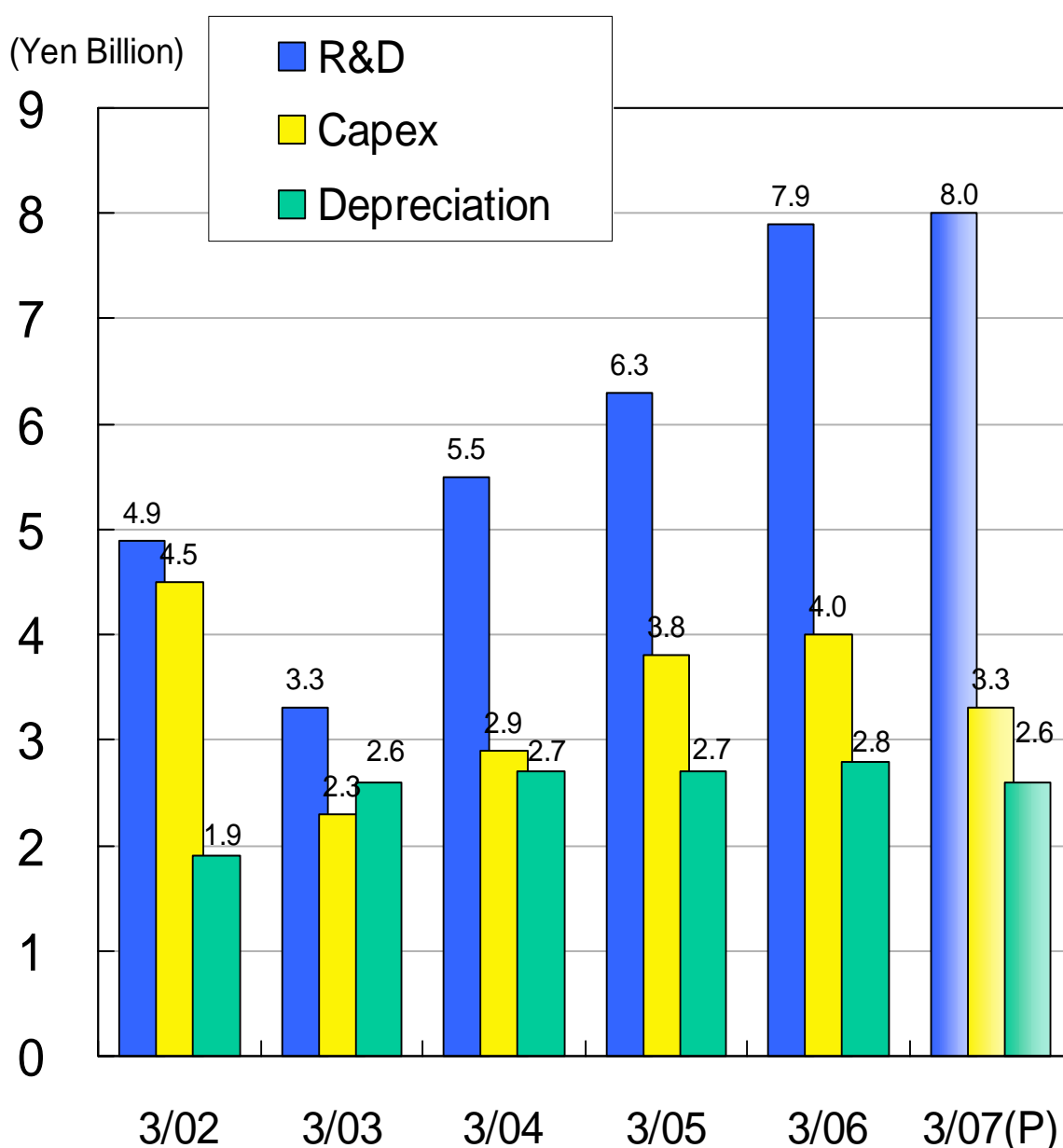
	3/02	3/03	3/04	3/05	3/06	9/06
Semiconductor Manufacturing Machine	5,533	7,212	14,821	13,401	19,450	20,839
Measuring Systems	1,810	2,207	3,565	3,691	4,355	4,681
Total	7,344	9,420	18,386	17,092	23,805	25,520



4. R&D, Capex & Depreciation (Consolidated)



	3/02	3/03	3/04	3/05	3/06	Interim 9/06	Full Year 3/07(P)
R&D	4,860	3,291	5,531	6,301	7,920	3,993	8,000
Capex	4,521	2,333	2,904	3,771	3,978	1,439	3,300
Depreciation	1,860	2,579	2,749	2,732	2,768	1,221	2,600

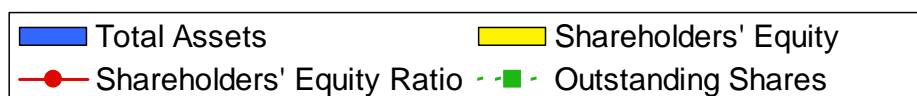


5. Balance Sheet (Consolidated)



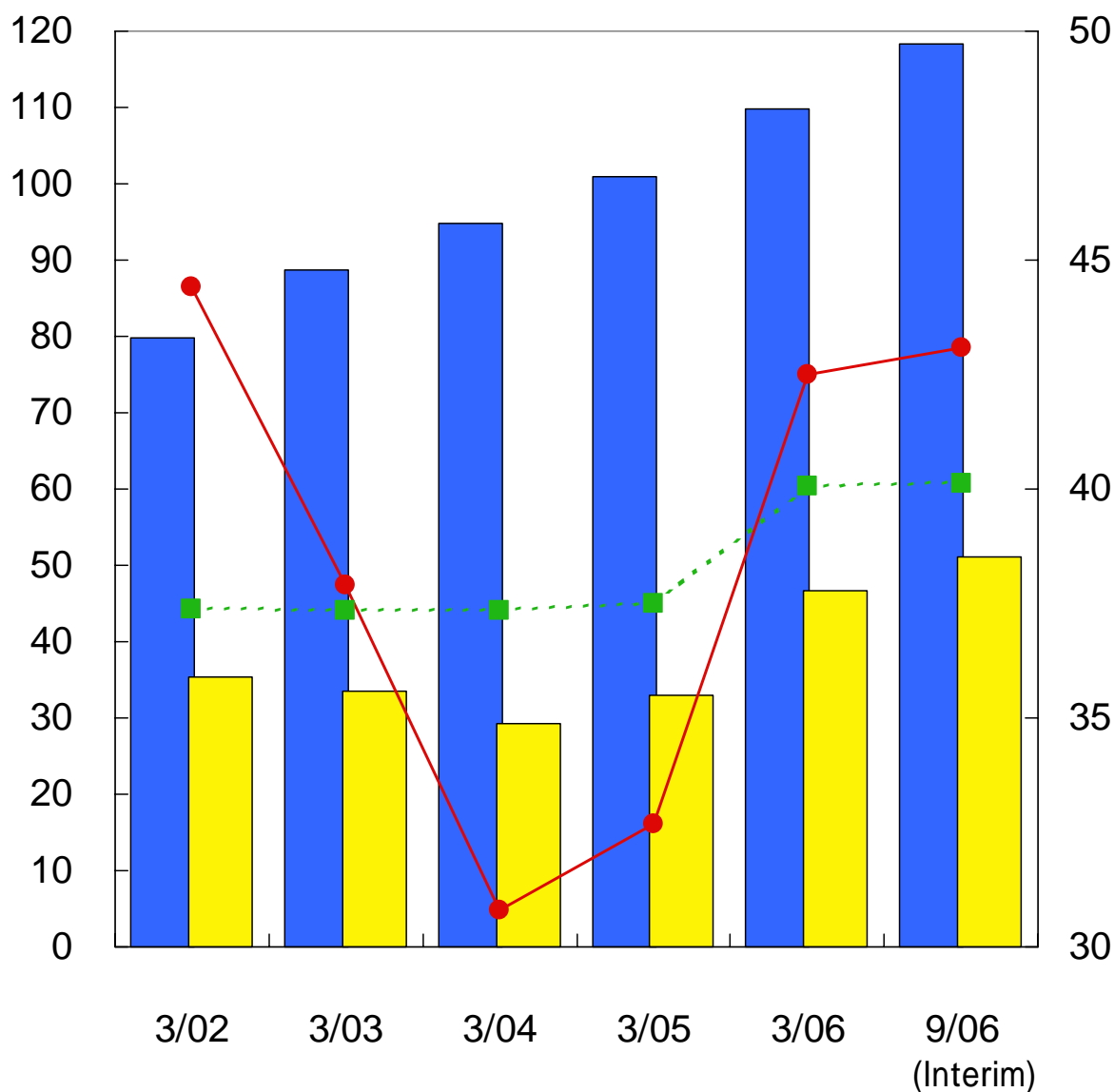
(Yen Million, Share)
Interim

	3/02	3/03	3/04	3/05	3/06	9/06
Total Assets	79,865	88,669	94,893	100,993	109,875	118,370
Shareholders' Equity	35,423	33,645	29,183	33,003	46,703	51,069
Outstanding Shares	37,370,643	37,355,873	37,354,830	37,495,725	40,073,746	40,113,978
Shareholders' Equity Ratio(%)	44.4%	37.9%	30.8%	32.7%	42.5%	43.1%



(Yen Billion)

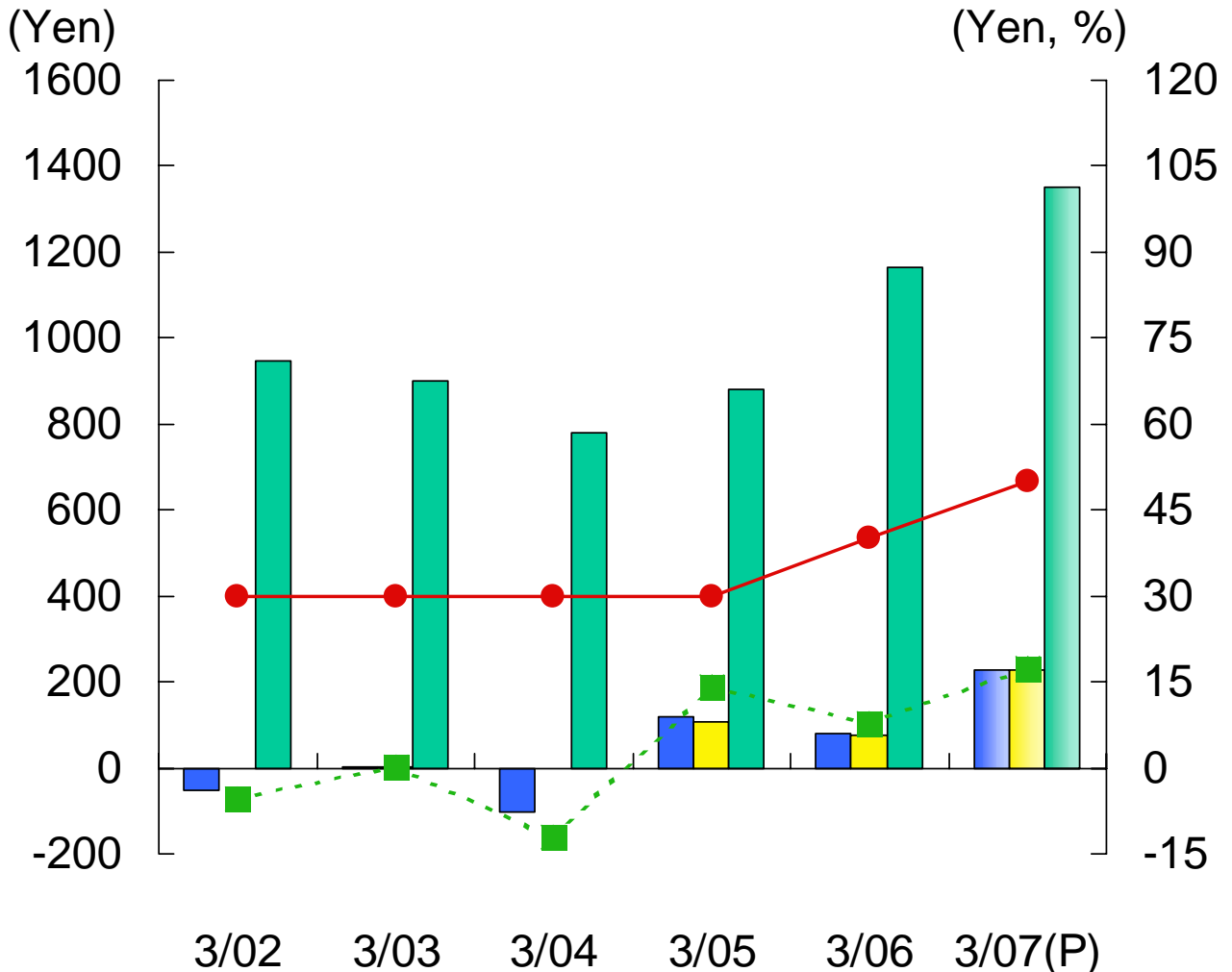
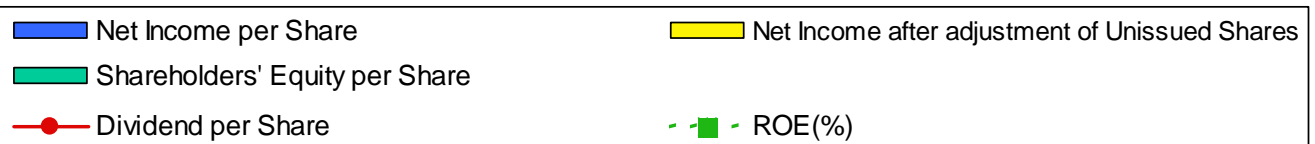
(Million Shares, %)



6. Per Share indexes, & ROE (Consolidated)



	3/02	3/03	3/04	3/05	3/06	Interim 9/06	Full Year 3/07(P)
Outstanding Shares	37,370,643	37,355,873	37,354,830	37,495,725	40,073,746	40,113,978	40,113,978
Net Income per Share	-54.21	1.64	-101.29	119.07	81.15	124.69	229.35
EPS after adjust. of Unissued Shares	-	1.64	-	108.99	74.37	116.17	229.35
Shareholders' Equity per Share	947.90	900.32	780.87	879.93	1,165.07	1,269.20	1,349.74
Dividend per Share	30	30	30	30	40	25	50
ROE(%)	-5.5%	0.2%	-12.0%	14.3%	7.8%	19.6%	17.5%



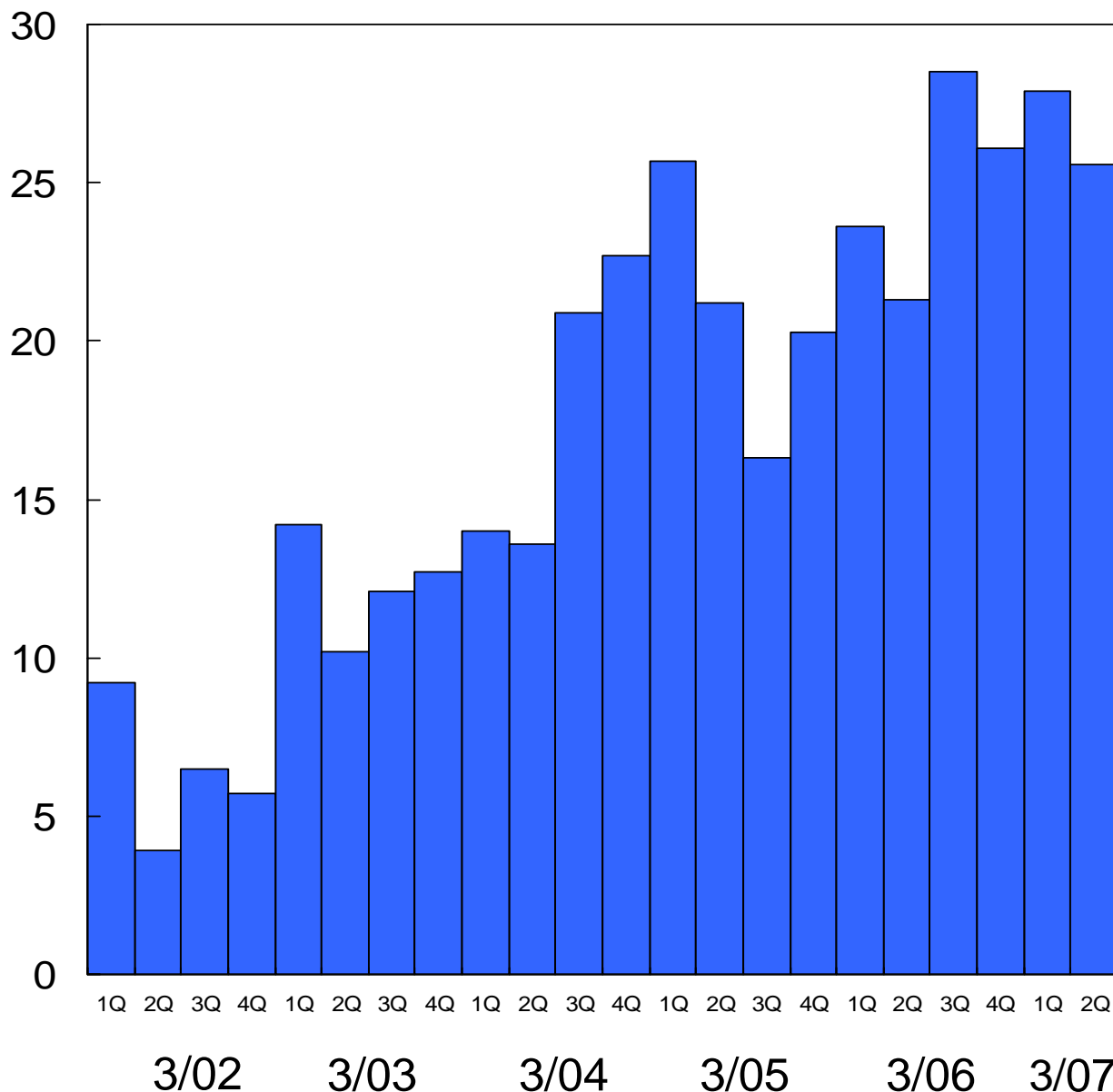
7. Quarterly Orders (Consolidated)



(Yen Billion)

	3/02	3/03	3/04	3/05	3/06	3/07
1Q	9,161	14,220	14,062	25,740	23,637	27,929
2Q	3,855	10,234	13,631	21,189	21,320	25,624
3Q	6,530	12,101	20,851	16,267	28,453	
4Q	5,723	12,693	22,744	20,260	26,148	

(Yen Billion)



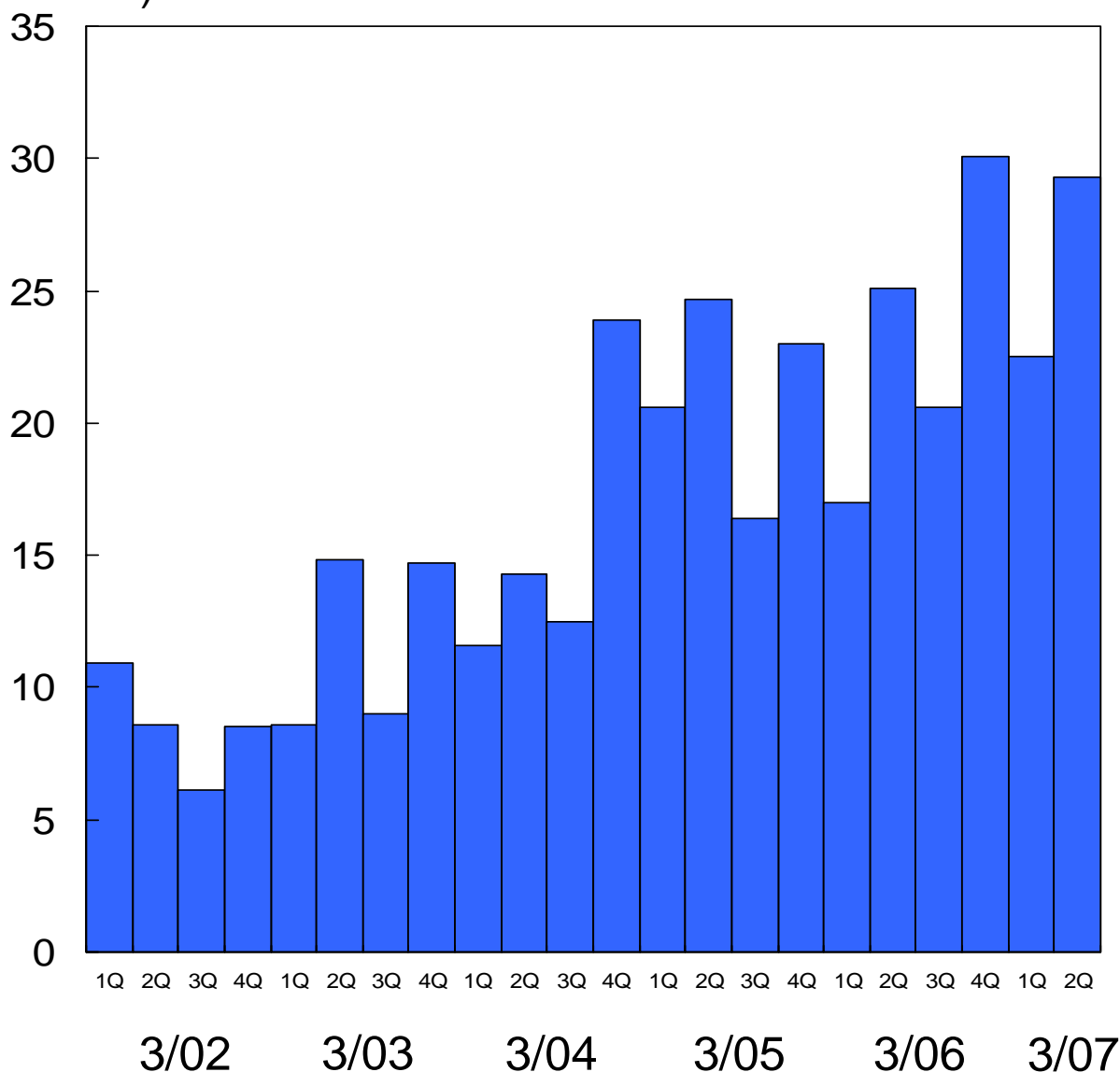
8. Quarterly Sales (Consolidated)



(Yen Million)

	2/03	3/03	3/04	3/05	3/06	3/07
1Q	10,926	8,562	11,586	20,637	16,987	22,510
2Q	8,581	14,832	14,323	24,704	25,097	29,329
3Q	6,091	9,049	12,502	16,395	20,637	
4Q	8,467	14,729	23,914	23,014	30,124	

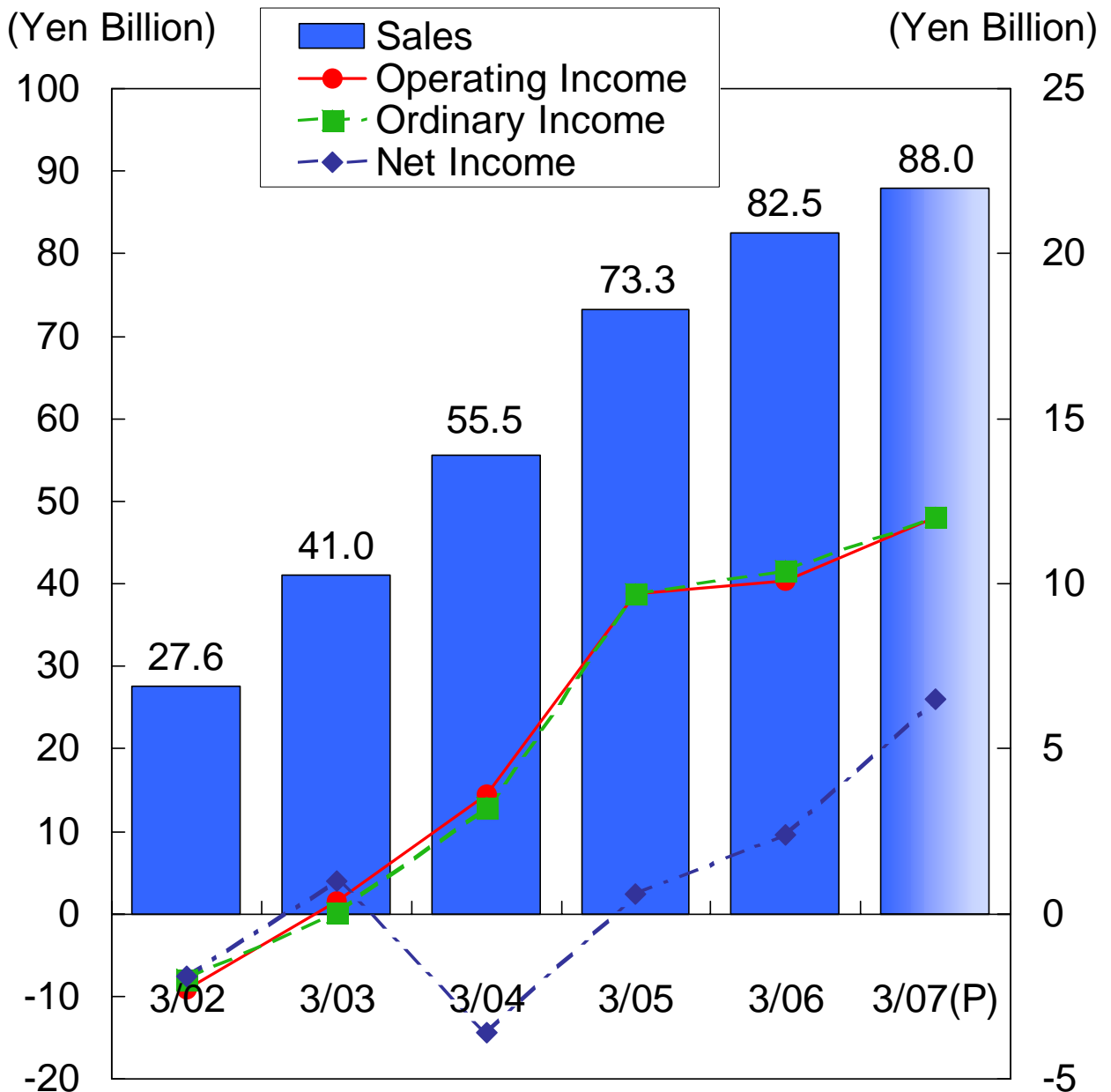
(Yen Billion)



1. Operating Results (Non-Consolidated)



	3/02	3/03	3/04	3/05	3/06	9/06	3/07(P)
Sales	27,643	40,996	55,549	73,337	82,540	45,065	88,000
Operating Income	-2,304	406	3,616	9,724	10,136	6,387	12,000
Ordinary Income	-1,968	54	3,243	9,677	10,423	6,699	12,000
Net Income	-1,850	1,032	-3,592	605	2,414	4,061	6,500



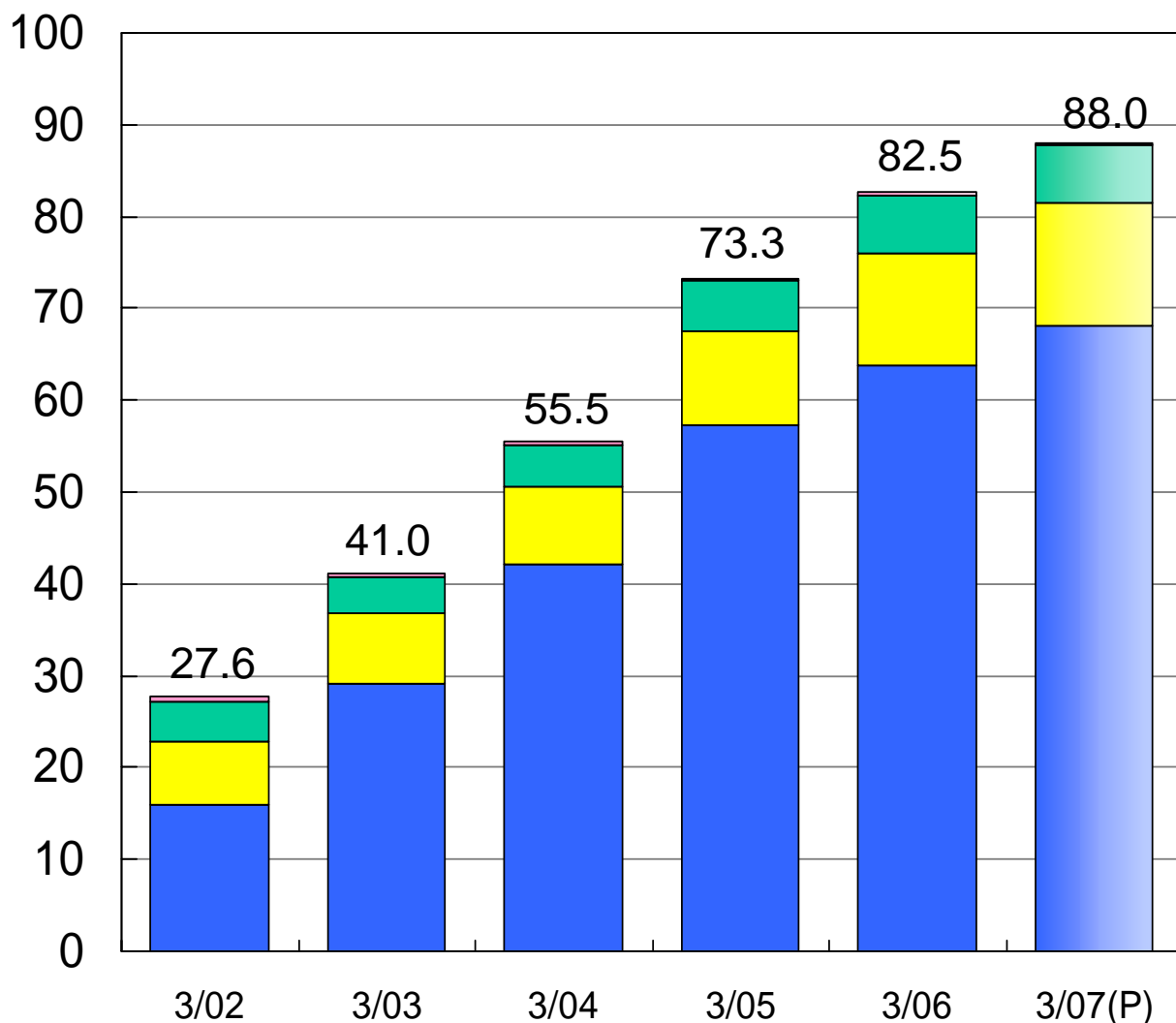
2. Sales by Product Group (Non- Consolidated)



	3/02	3/03	3/04	3/05	3/06	9/06	3/07(P)
Semiconductor Mfg. Machine	15,897	29,154	42,114	57,335	63,788	35,281	68,200
(Overseas Sales)	(8,240)	(17,037)	(24,351)	(34,520)	(38,881)	(18,899)	-
Industrial Measuring Machine	6,969	7,631	8,513	10,257	12,117	6,578	13,300
(Overseas Sales)	(1,083)	(1,446)	(1,487)	(1,959)	(2,082)	(1,390)	-
In-line Measuring Machine	4,278	3,959	4,559	5,442	6,266	2,972	6,200
(Overseas Sales)	(283)	(256)	(242)	(380)	(299)	(206)	-
Others	498	251	362	303	368	234	300
(Overseas Sales)	(43)	(28)	(17)	(25)	(31)	(25)	-
Total	27,643	40,996	55,549	73,337	82,540	45,065	88,000
(Total Overseas Sales)	(9,651)	(18,768)	(26,097)	(36,884)	(41,294)	(20,520)	-

■ Semiconductor Mfg. Mach. ■ Industrial Msg. Mach.
■ In-line Msg. Mach. ■ Others

(Yen Billion)



3. Order Backlog (Non-Consolidated)

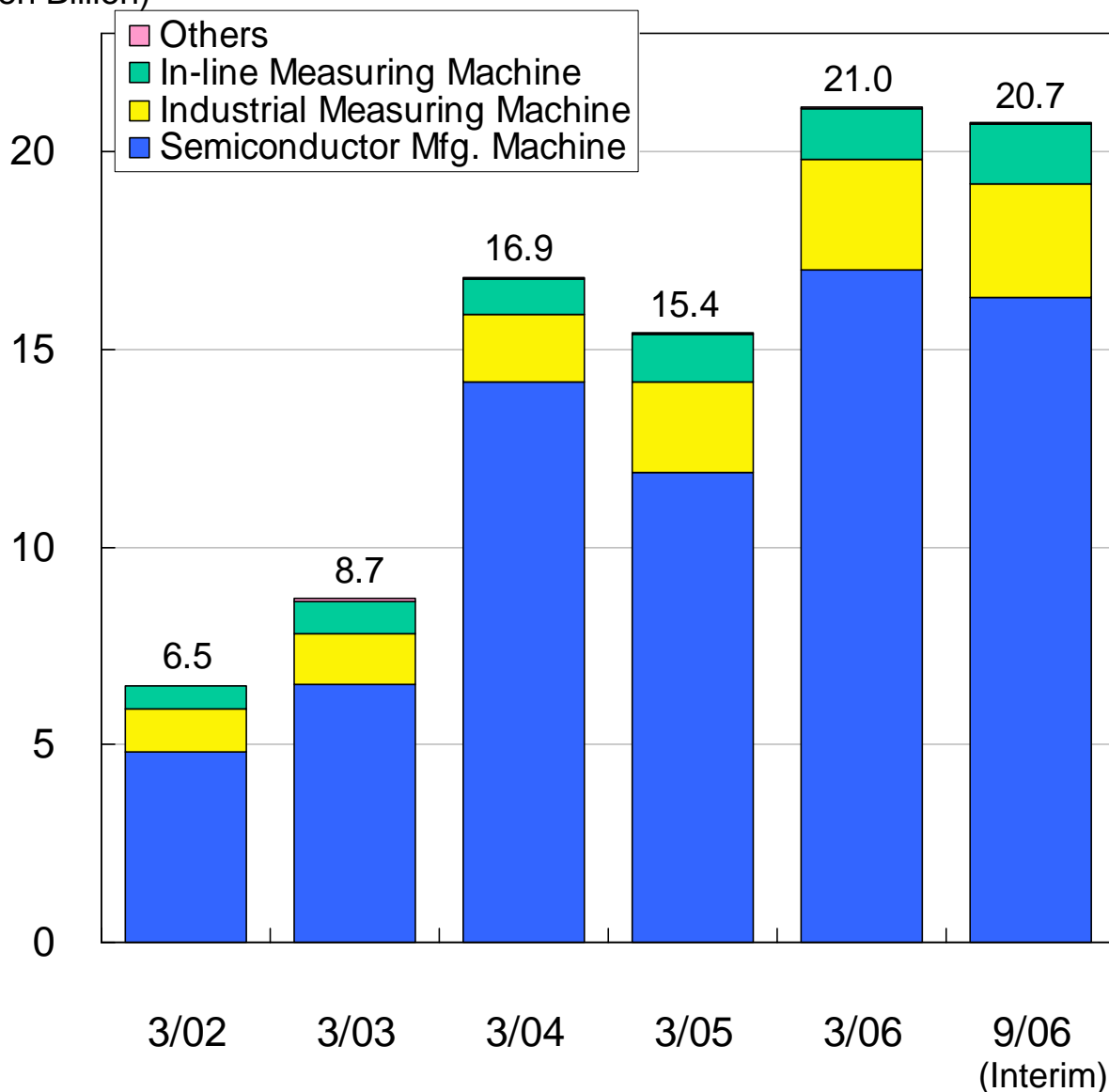


(Yen Million)

Interim

	3/02	3/03	3/04	3/05	3/06	9/06
Semiconductor Mfg. Machine	4,838	6,524	14,237	11,884	16,968	16,338
Industrial Measuring Machine	1,092	1,325	1,713	2,276	2,769	2,850
In-line Measuring Machine	576	806	875	1,207	1,285	1,493
Others	16	51	37	43	23	44
Total	6,523	8,708	16,863	15,410	21,045	20,725

(Yen Billion)

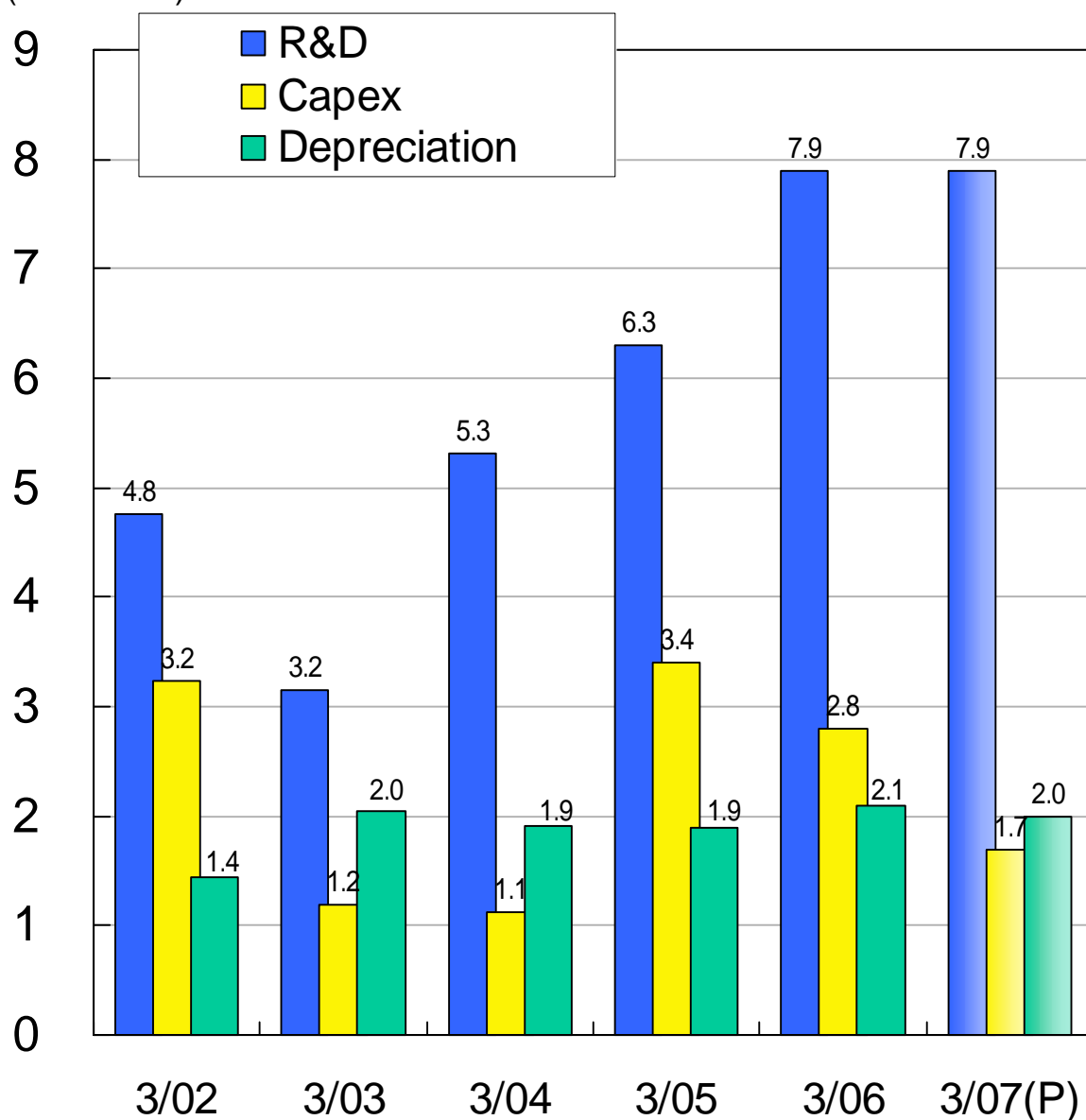


4. R&D, Capex & Depreciation (Non-Consolidated)



	3/02	3/03	3/04	3/05	3/06	Interim 9/06	Full Year 3/07(P)
R&D	4,758	3,156	5,321	6,263	7,904	3,964	7,900
Capex	3,242	1,186	1,124	3,435	2,814	811	1,720
Depreciation	1,441	2,042	1,907	1,922	2,065	970	2,000

(Yen Billion)

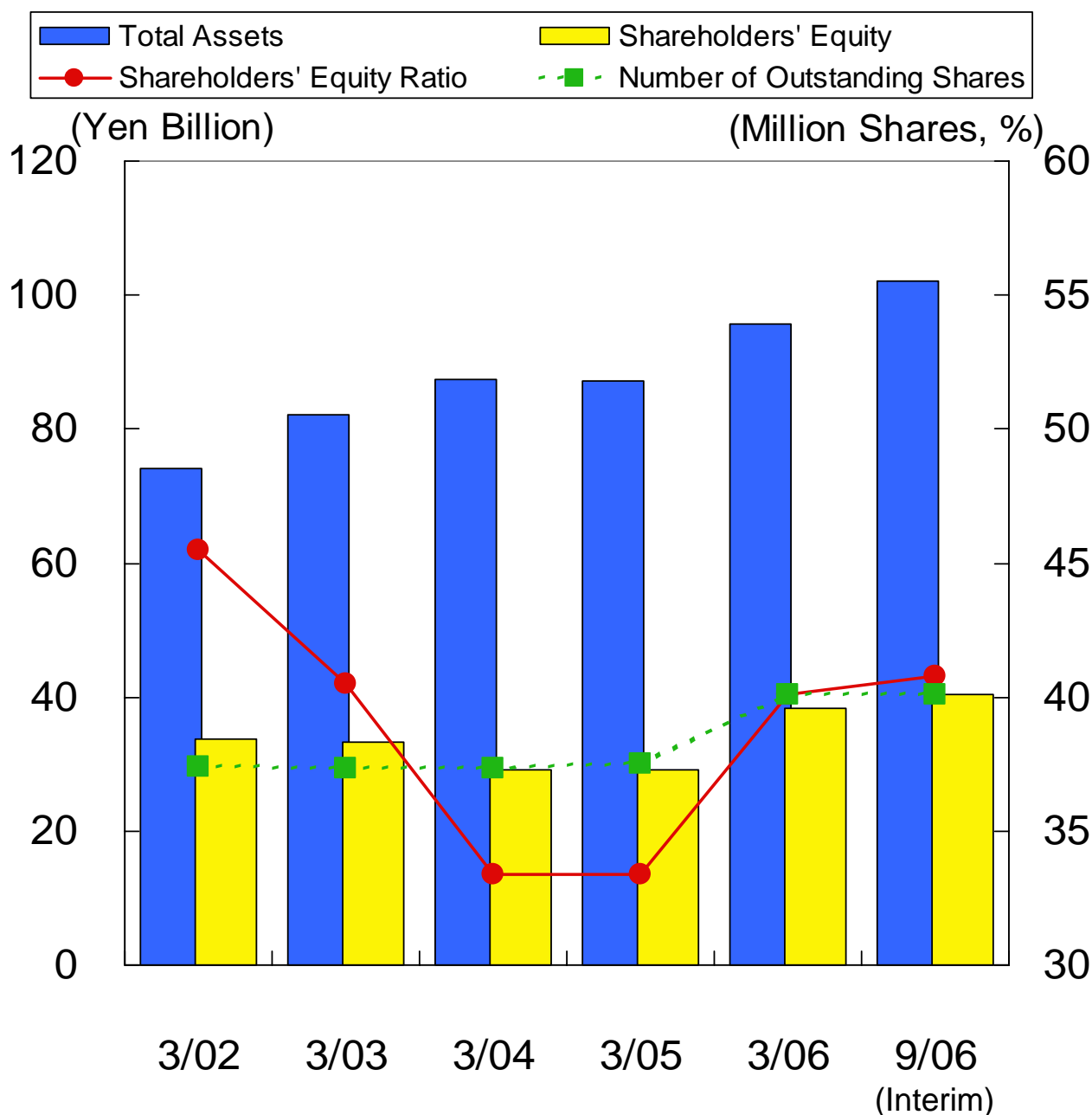


5. Balance Sheet (Non-Consolidated)



(Yen Million, Share)
Interim

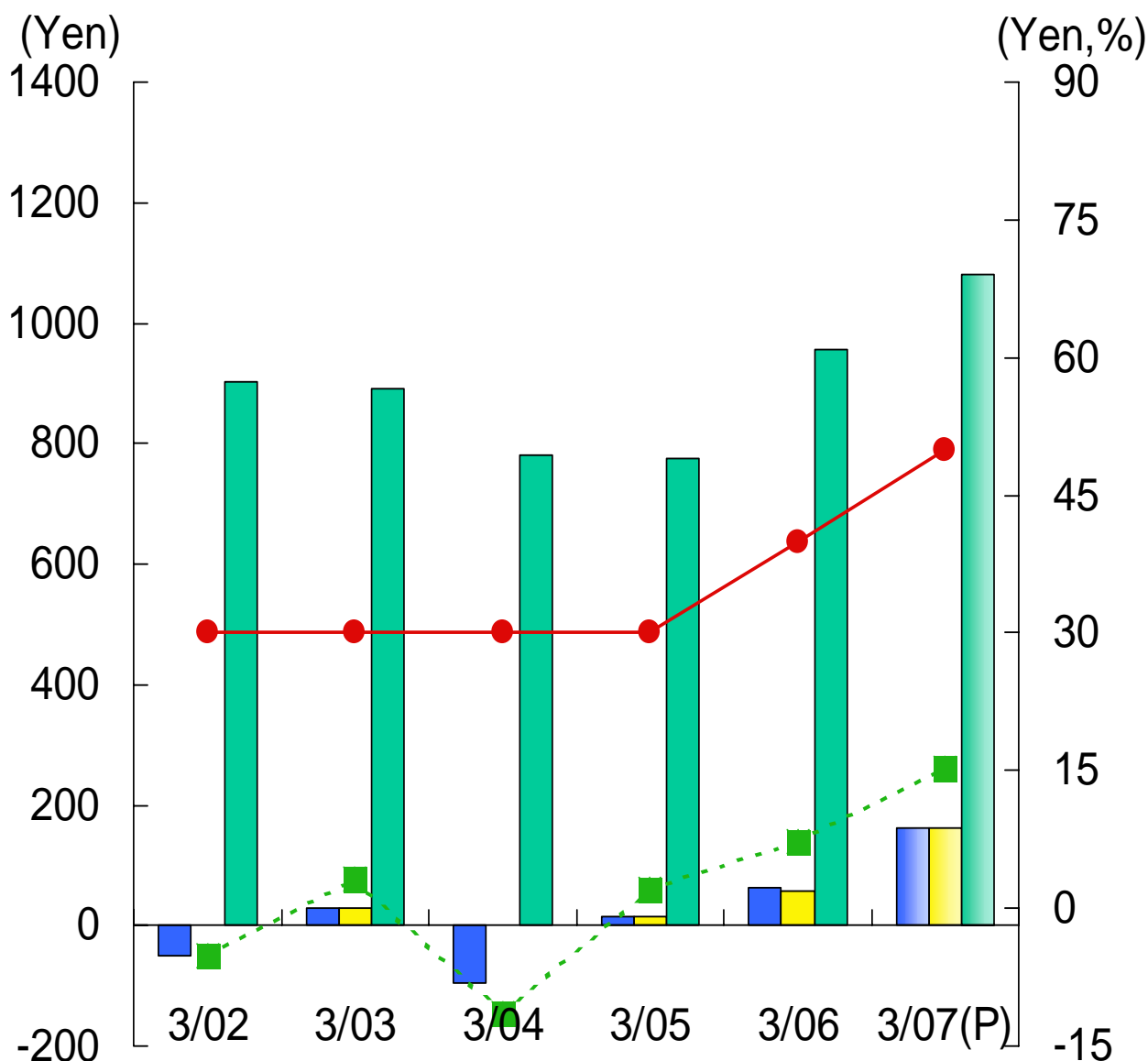
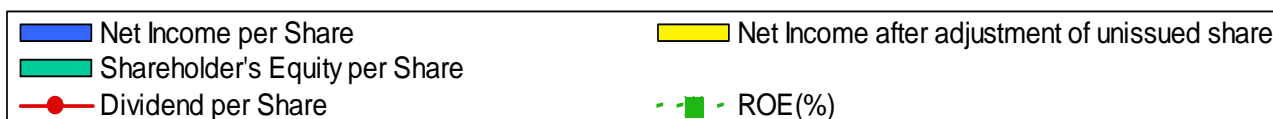
	3/02	3/03	3/04	3/05	3/06	9/06
Total Assets	74,130	82,163	87,385	87,161	95,589	102,142
Shareholders' Equity	33,752	33,247	29,204	29,088	38,295	40,344
Number of Outstanding Shares	37,370,643	37,355,873	37,354,830	37,495,725	40,073,746	40,113,978
Shareholders' Equity Ratio	45.5%	40.5%	33.4%	33.4%	40.1%	40.8%



6. Per Share indexes, & ROE (Non-Consolidated)



	3/02	3/03	3/04	3/05	3/06	Interim 9/06	Full Year 3/07(P)
Number of Outstanding Shares	37,370,643	37,355,873	37,354,830	37,495,725	40,073,746	40,113,978	40,113,978
Net Income per Share	-49.50	27.63	-96.16	16.16	62.67	101.29	162.04
EPS after adjustment of unissued shares	-	27.59	-	14.79	57.43	94.37	162.04
Shareholders' Equity per Share	903.17	890.03	781.80	775.78	955.63	1,036.18	1,080.51
Dividend per Share	30	30	30	30	40	25	50
ROE(%)	-5.2%	3.1%	-11.5%	2.1%	7.2%	19.5%	15.3%



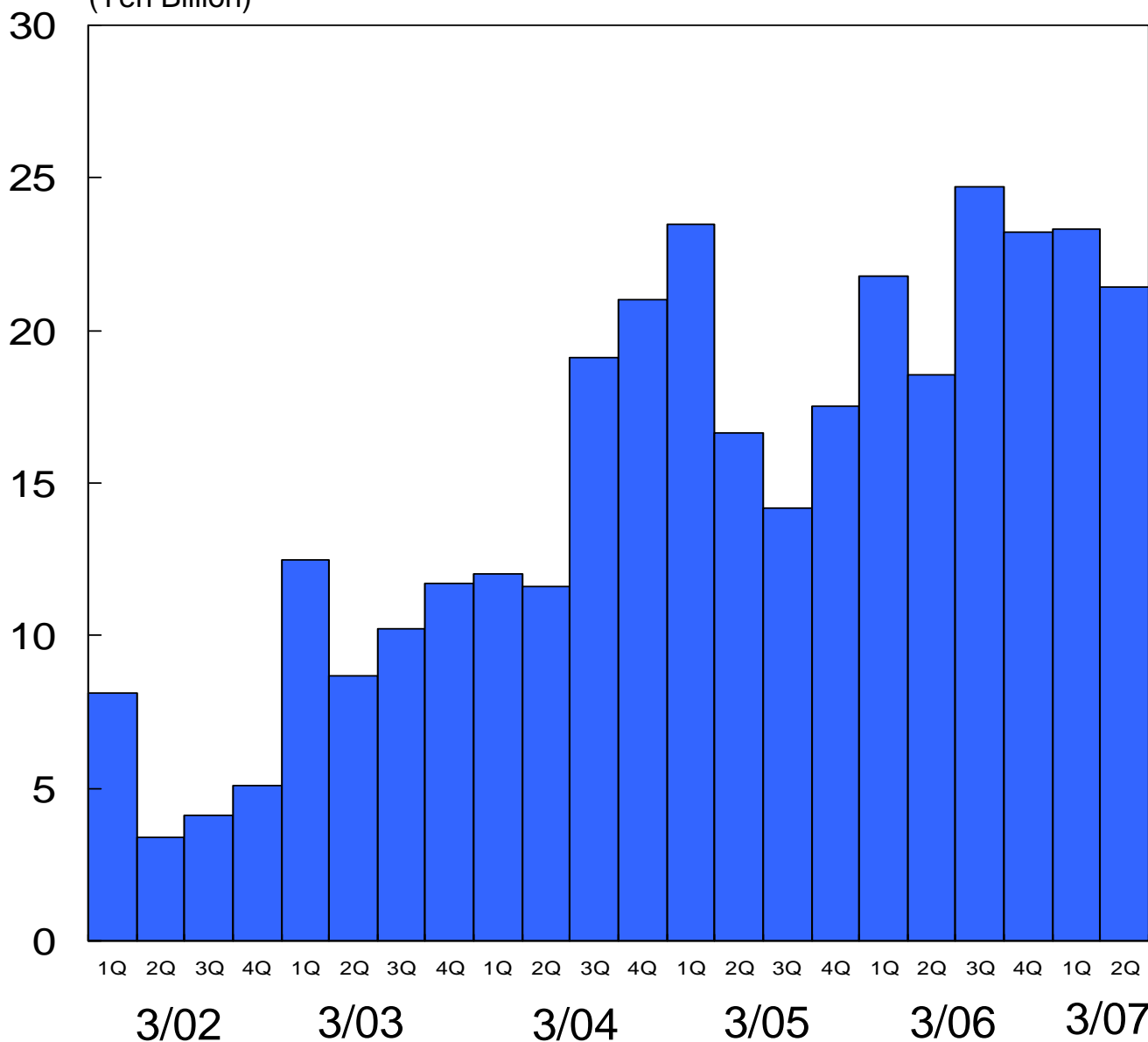
7. Quarterly Orders (Non-Consolidated)



(Yen Million)

	3/02	3/03	3/04	3/05	3/06	3/07
1Q	8,085	12,537	11,959	23,455	21,797	23,332
2Q	3,408	8,695	11,617	16,652	18,541	21,413
3Q	4,050	10,220	19,086	14,236	24,662	
4Q	5,056	11,730	21,041	17,541	23,175	

(Yen Billion)



8. Quarterly Sales (Non-Consolidated)



(Yen Billion)

	3/02	3/03	3/04	3/05	3/06	3/07
1Q	9,070	6,673	10,417	17,736	14,812	20,247
2Q	7,106	12,877	12,688	21,770	22,747	24,818
3Q	4,490	7,706	10,692	13,550	18,282	
4Q	6,977	13,741	21,752	20,281	26,699	

(Yen Billion)

