

# Tokyo Seimitsu Co., Ltd.



## Reference Data for FY2006 Interim Earnings

### Contents

#### **I. Consolidated**

1. Operating Results
2. Sales by Product Group
3. Order Backlog
4. R&D, Capex & Depreciation
5. Balance Sheet
6. Per Share Indexes, ROE
7. Quarterly Orders
8. Quarterly Sales

#### **II. Non-Consolidated**

1. Operating Results
2. Sales by Product Group
3. Order Backlog
4. R&D, Capex & Depreciation
5. Balance Sheet
6. Per Share Indexes, ROE
7. Quarterly Orders
8. Quarterly Sales

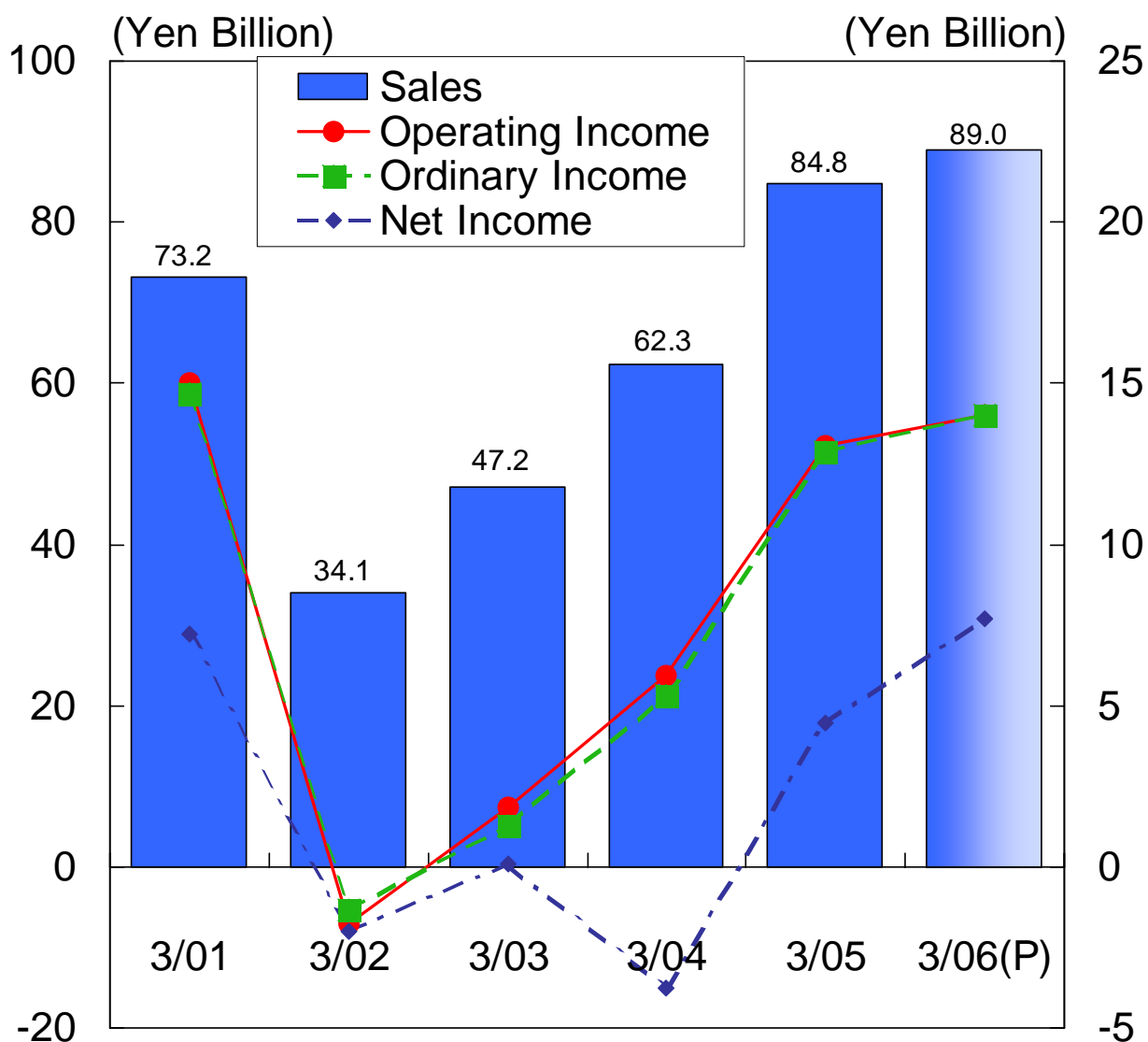
November 11, 2005

# 1. Operating Results (Consolidated)



(Yen Million)  
Interim Full Year

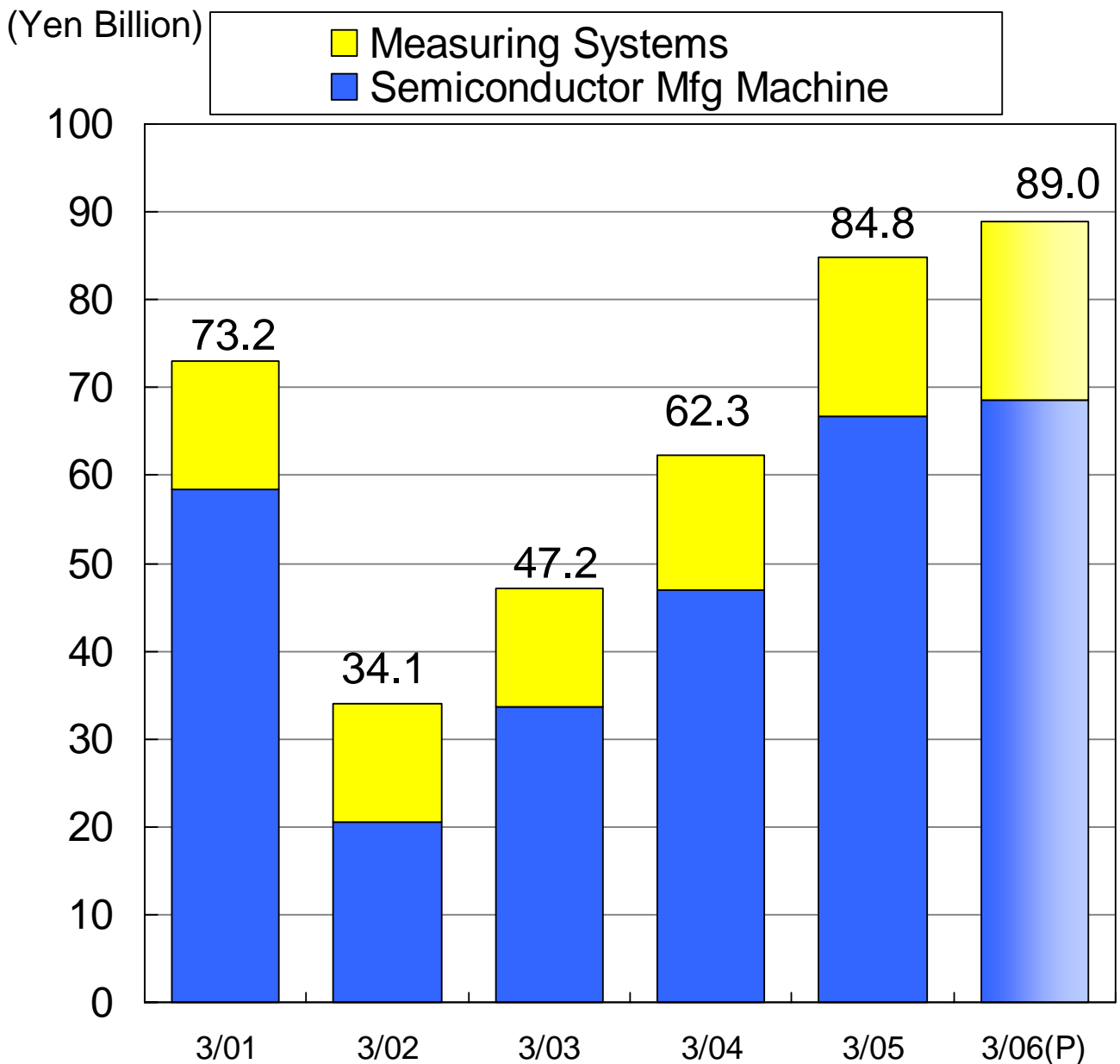
	3/01	3/02	3/03	3/04	3/05	9/05	3/06(P)
Sales	73,172	34,064	47,171	62,324	84,750	42,083	89,000
Operating Income	15,032	-1,757	1,860	5,947	13,051	6,593	14,000
Ordinary Income	14,674	-1,336	1,259	5,328	12,885	6,720	14,000
Net Income	7,237	-2,026	74	-3,783	4,459	3,914	7,700



# 2. Sales by Product Group (Consolidated)



	(Yen Million)						
	3/01	3/02	3/03	3/04	3/05	Interim 9/05	Full Year 3/06(P)
Semiconductor Mfg. Machine	58,526	20,607	33,561	47,045	66,669	32,005	68,500
Measuring Systems	14,646	13,457	13,610	15,279	18,081	10,077	20,500
<b>Total</b>	<b>73,172</b>	<b>34,064</b>	<b>47,171</b>	<b>62,325</b>	<b>84,750</b>	<b>42,083</b>	<b>89,000</b>

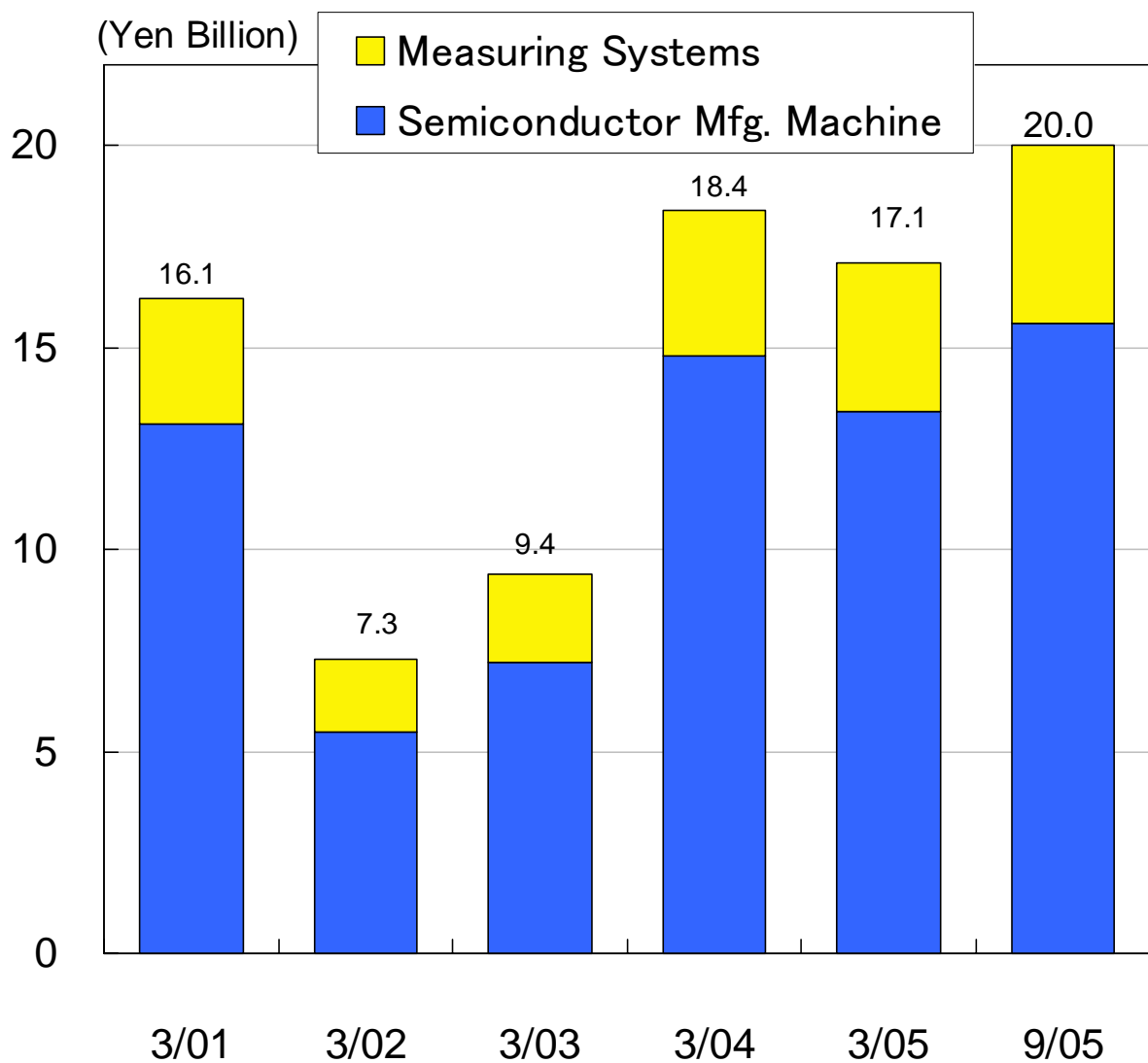


# 3. Order Backlog (Consolidated)



(Yen Million)  
Interim

	3/01	3/02	3/03	3/04	3/05	9/05
Semiconductor Manufacturing Machine	13,089	5,533	7,212	14,821	13,401	15,562
Measuring Systems	3,051	1,810	2,207	3,565	3,691	4,403
Total	16,140	7,344	9,420	18,386	17,092	19,965

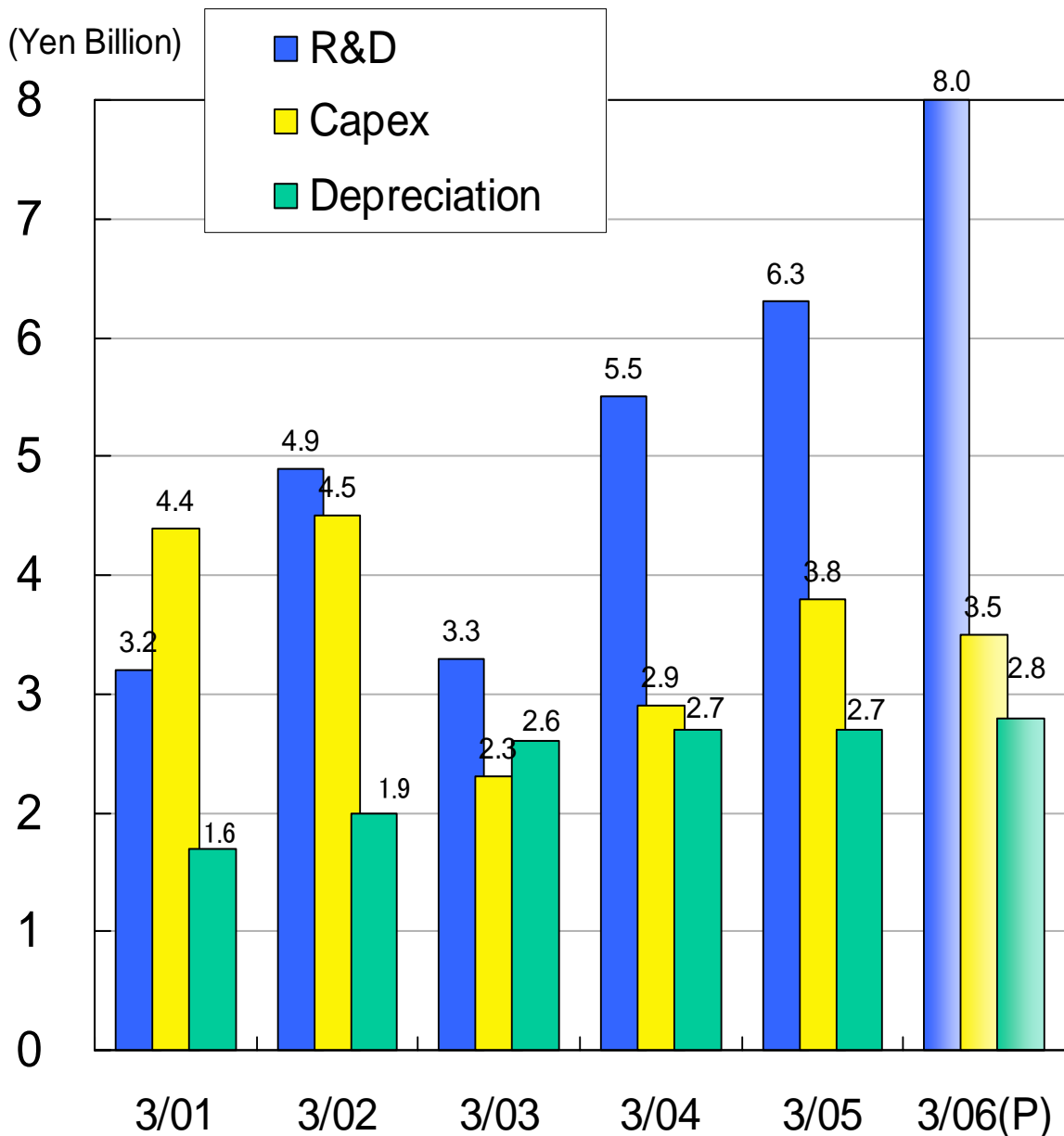


(Interim)

# 4. R&D, Capex & Depreciation (Consolidated)



	3/01	3/02	3/03	3/04	3/05	Interim 9/05	Full Year 3/06(P)
R&D	3,188	4,860	3,291	5,531	6,301	3,601	8,000
Capex	4,396	4,521	2,333	2,904	3,771	2,170	3,530
Depreciation	1,567	1,860	2,579	2,749	2,732	1,338	2,790

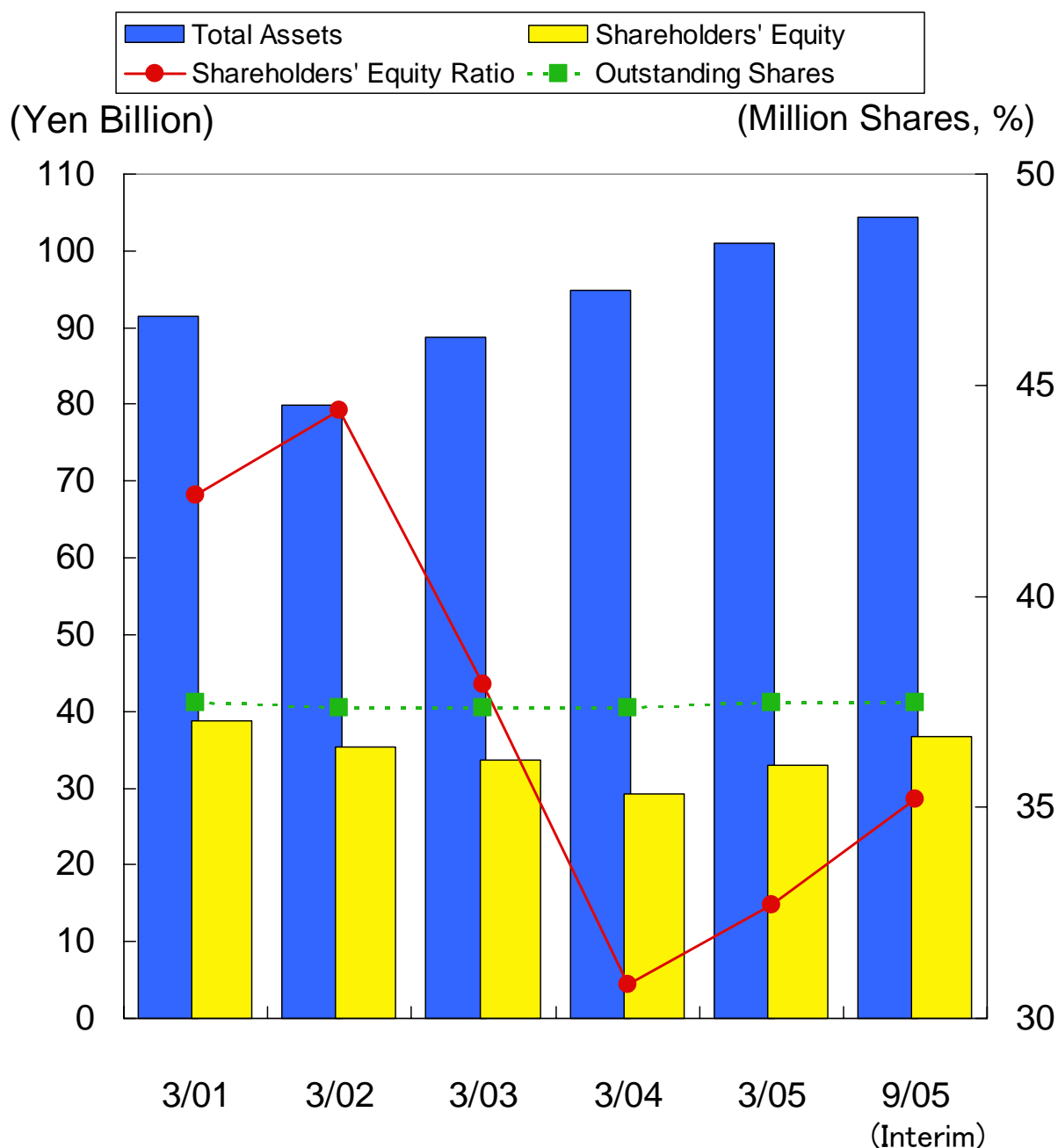


# 5. Balance Sheet (Consolidated)



(Yen Million, Share)  
Interim

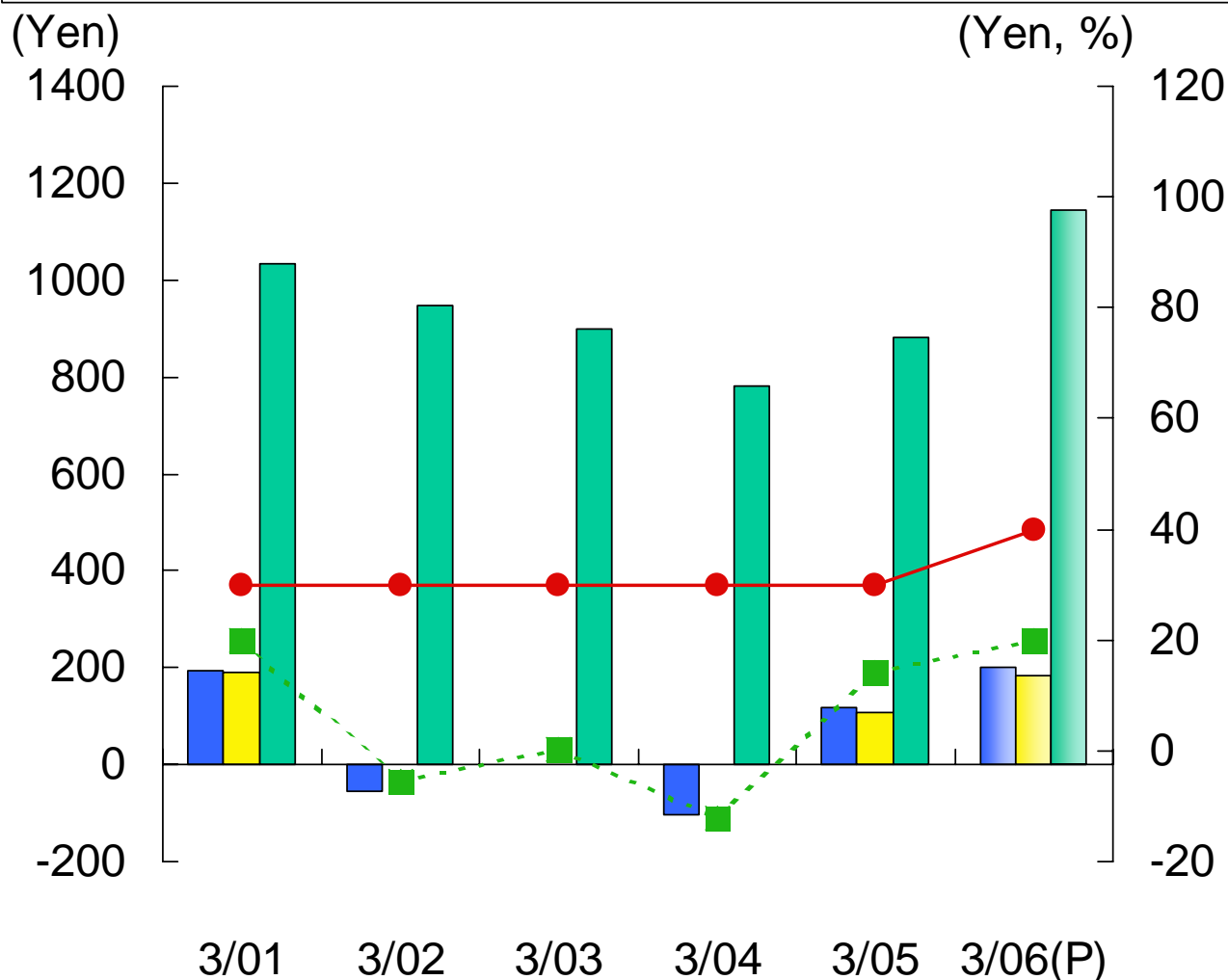
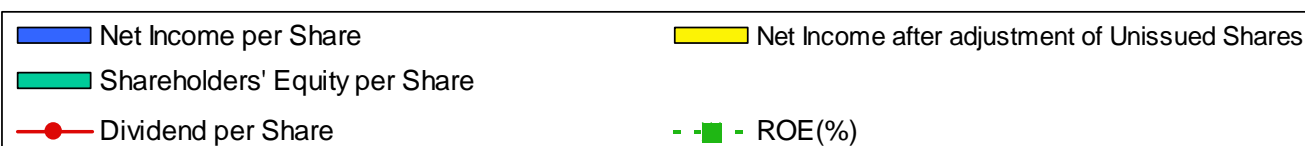
	3/01	3/02	3/03	3/04	3/05	9/05
Total Assets	91,477	79,865	88,669	94,893	100,993	104,436
Shareholders' Equity	38,779	35,423	33,645	29,183	33,003	36,755
Outstanding Shares	37,465,771	37,370,643	37,355,873	37,354,830	37,495,725	37,494,533
Shareholders' Equity Ratio(%)	42.4%	44.4%	37.9%	30.8%	32.7%	35.2%



# 6. Per Share indexes, & ROE (Consolidated)



	3/01	3/02	3/03	3/04	3/05	Interim 9/05	Full Year 3/06(P)
Outstanding Shares	37,465,771	37,370,643	37,355,873	37,354,830	37,495,725	37,494,533	39,205,736
Net Income per Share	192.95	-54.21	1.64	-101.67	118.82	104.39	200.78
EPS after adjust. of Unissued Shares	192.21	-	1.64	-	108.75	95.28	183.60
Shareholders' Equity per Share	1,035.06	947.90	900.32	780.87	879.93	980.29	1,145.24
Dividend per Share	30	30	30	30	30	20	40
ROE(%)	20.0%	-5.5%	0.2%	-12.0%	14.3%	11.2%	19.8%



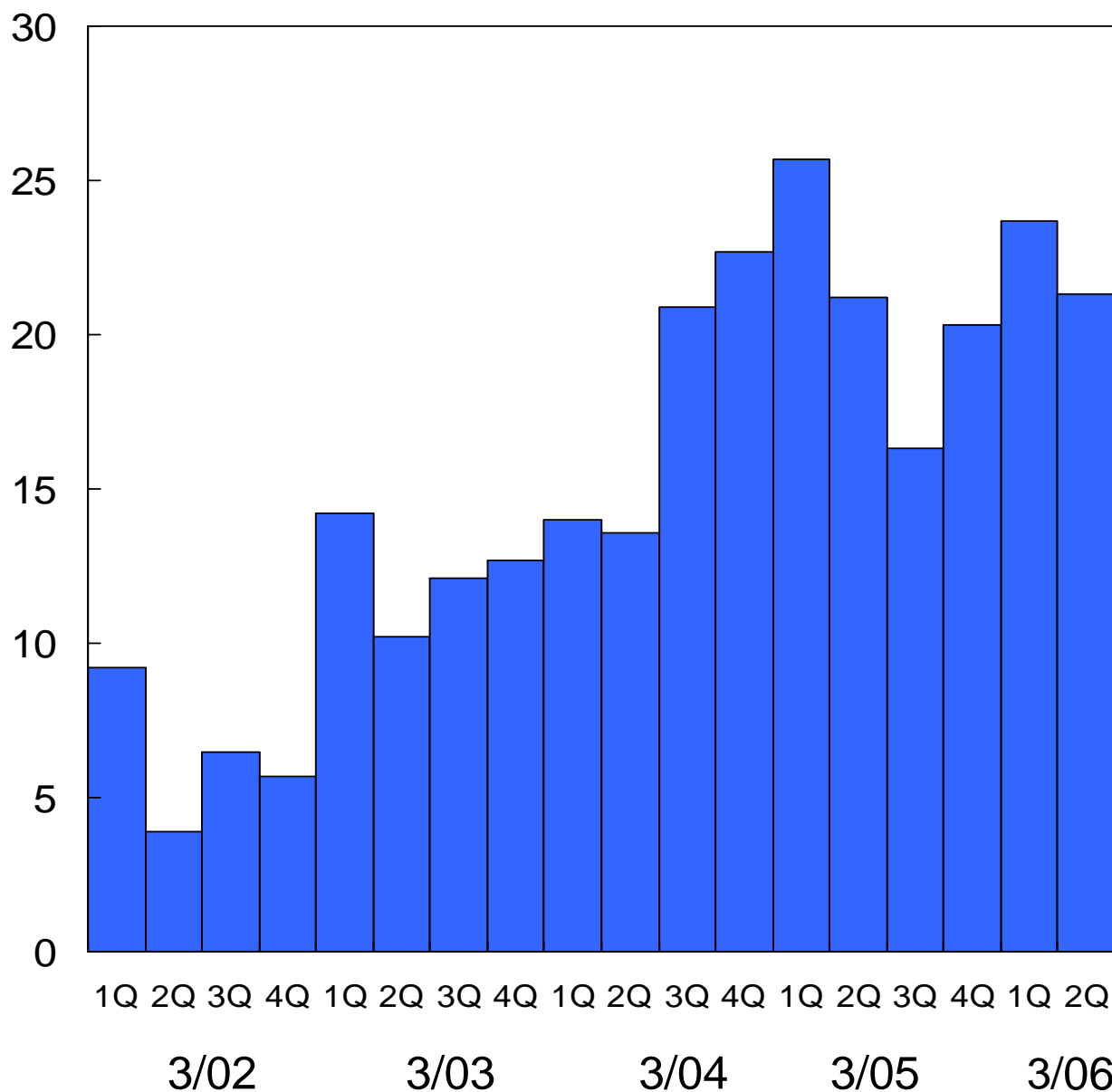
# 7. Quarterly Orders (Consolidated)



(Yen Billion)

	3/02	3/03	3/04	3/05	3/06
1Q	9,161	14,220	14,062	25,740	23,637
2Q	3,855	10,234	13,631	21,189	21,320
3Q	6,530	12,101	20,851	16,267	
4Q	5,723	12,693	22,744	20,260	

(Yen Billion)



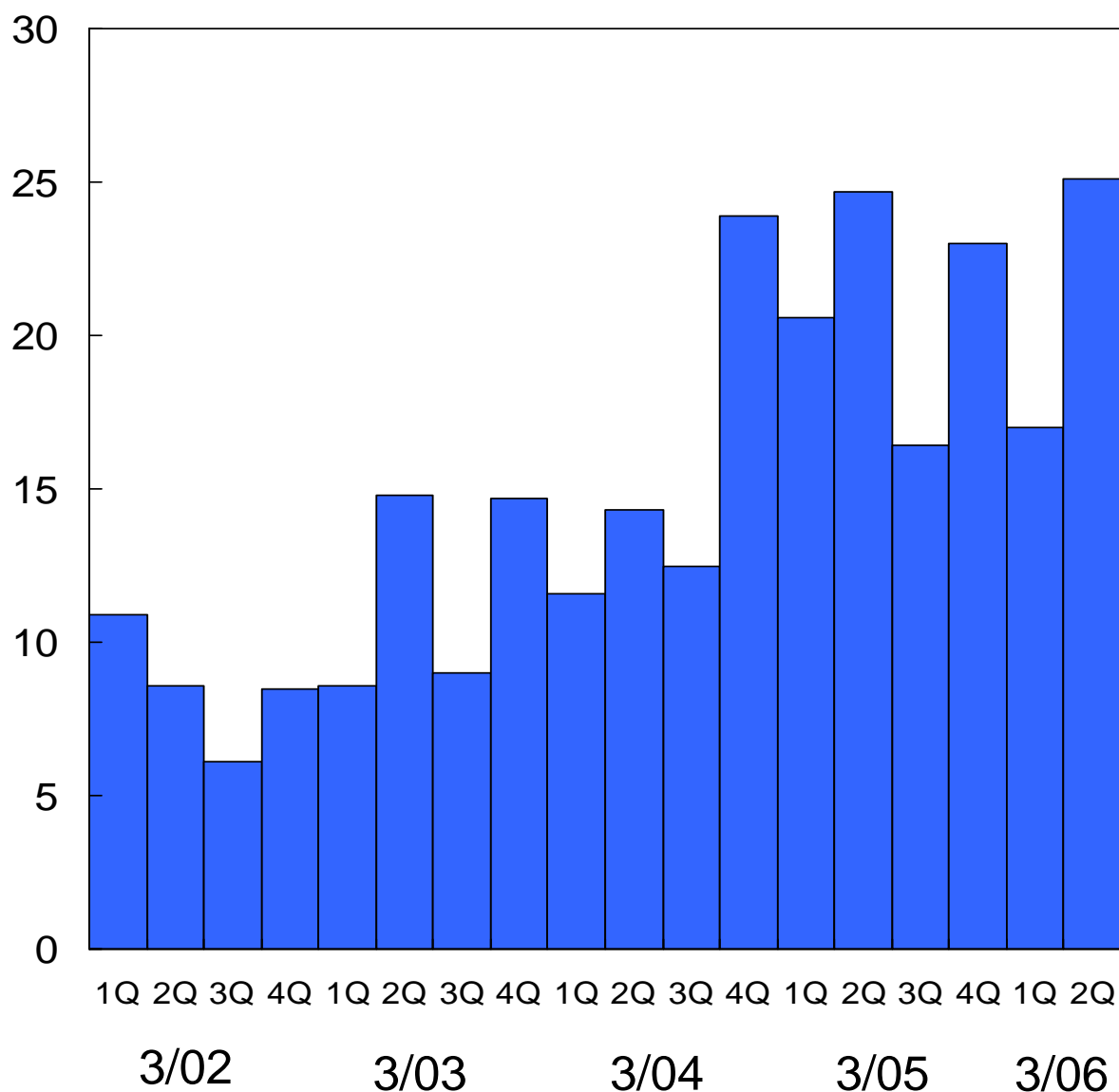
# 8. Quarterly Sales (Consolidated)



(Yen Million)

	3/02	3/03	3/04	3/05	3/06
1Q	10,926	8,562	11,586	20,637	16,987
2Q	8,581	14,832	14,323	24,704	25,097
3Q	6,091	9,049	12,502	16,395	
4Q	8,467	14,729	23,914	23,014	

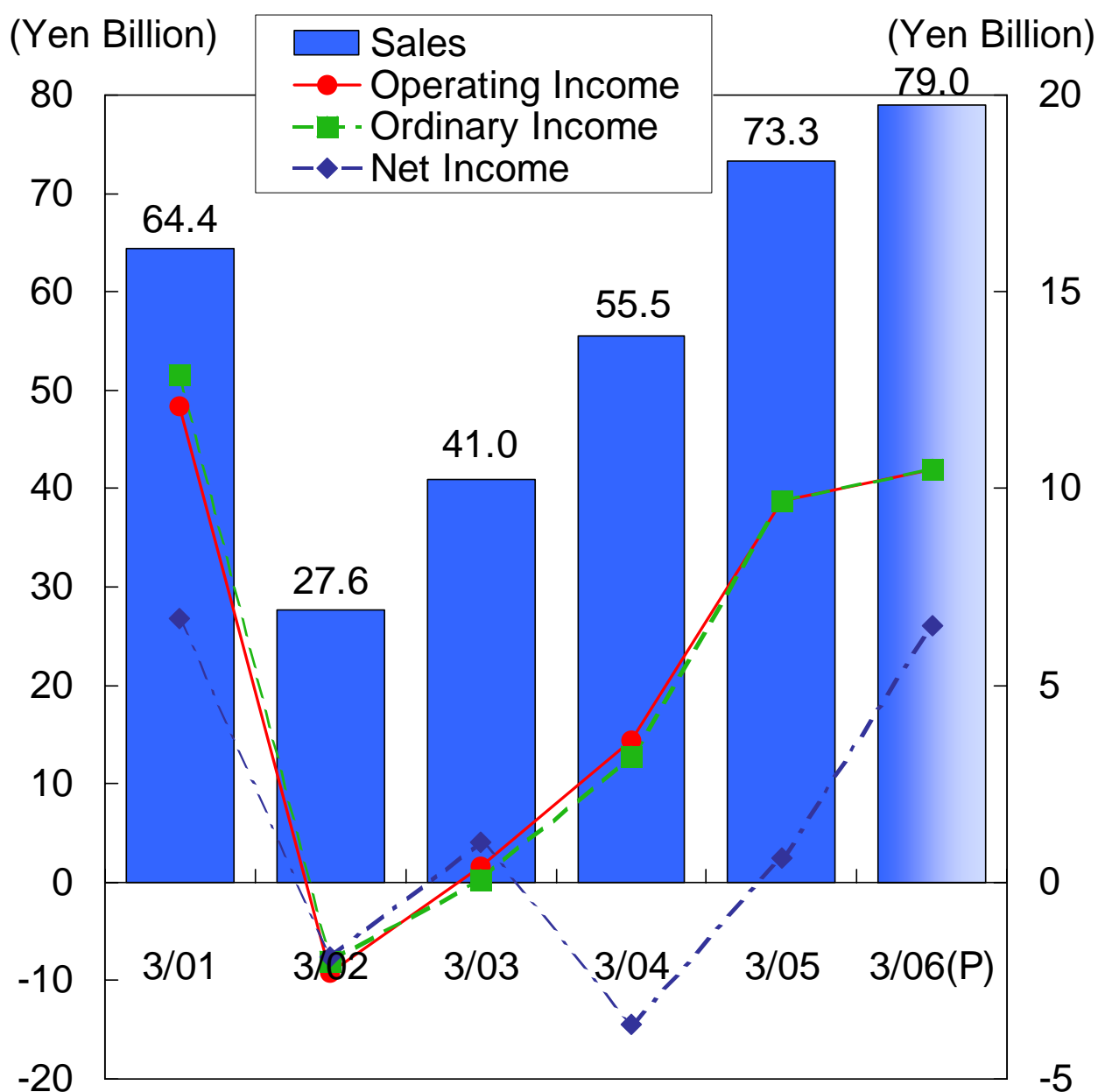
(Yen Billion)



# 1. Operating Results (Non-Consolidated)



	3/01	3/02	3/03	3/04	3/05	Interim 9/05	Full Year 3/06(P)
Sales	64,423	27,643	40,996	55,549	73,337	37,558	79,000
Operating Income	12,130	-2,304	406	3,616	9,724	4,932	10,500
Ordinary Income	12,942	-1,968	54	3,243	9,677	5,247	10,500
Net Income	6,688	-1,850	1,032	-3,592	605	3,456	6,500



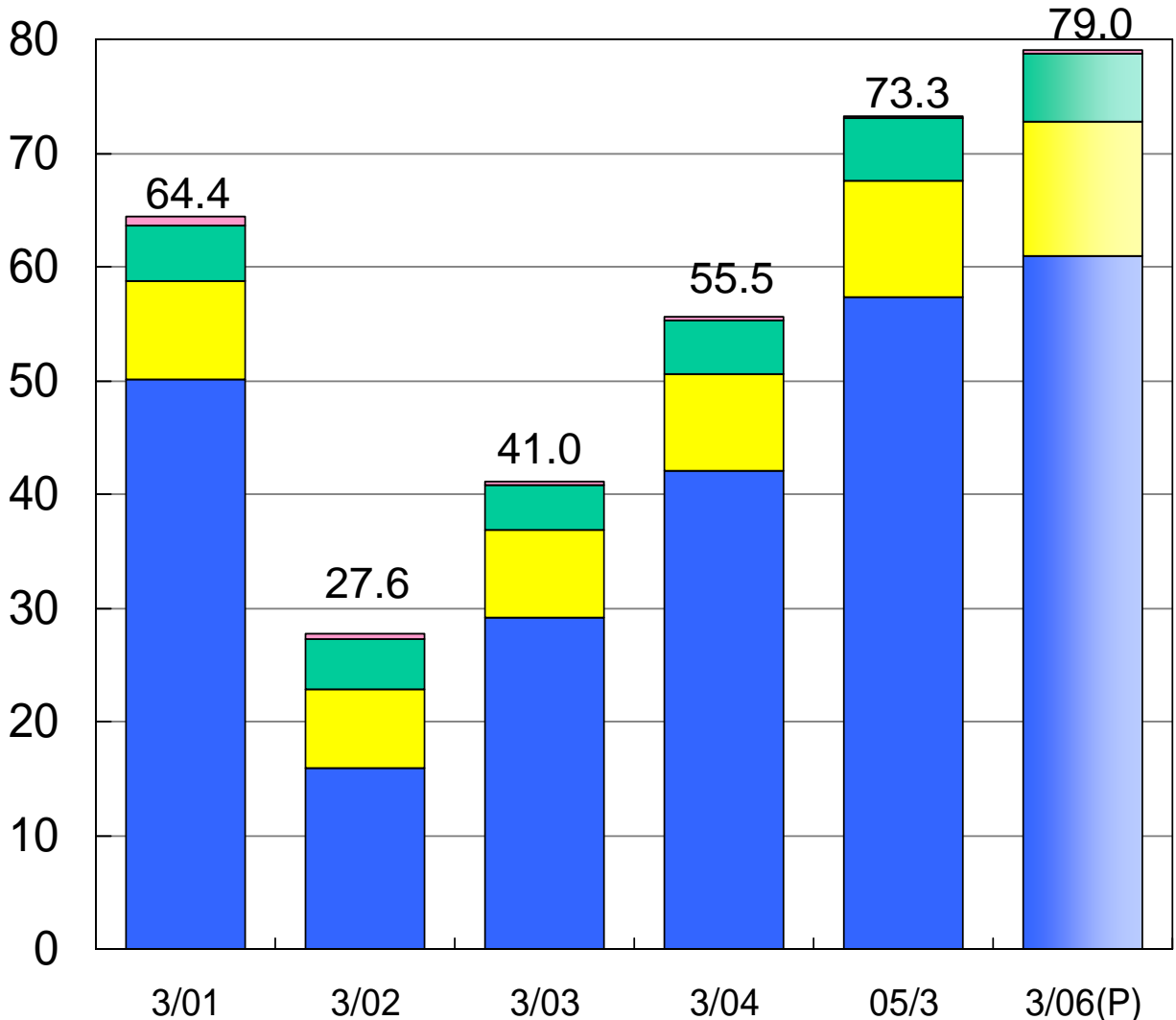
# 2. Sales by Product Group (Non- Consolidated)



	3/01	3/02	3/03	3/04	3/05	Interim 9/05	(Yen Million) Full Year 3/06(P)
Semiconductor Mfg. Machine	50,121	15,897	29,154	42,114	57,335	28,643	61,000
(Overseas Sales)	(26,326)	(8,240)	(17,037)	(24,351)	(34,520)	(17,335)	-
Industrial Measuring Machine	8,575	6,969	7,631	8,513	10,257	5,805	11,800
(Overseas Sales)	(1,125)	(1,083)	(1,446)	(1,487)	(1,959)	(1,026)	-
In-line Measuring Machine	4,906	4,278	3,959	4,559	5,442	2,994	6,000
(Overseas Sales)	(398)	(283)	(256)	(242)	(380)	(154)	-
Others	820	498	251	362	303	116	200
(Overseas Sales)	(47)	(43)	(28)	(17)	(25)	(13)	-
<b>Total</b>	<b>64,423</b>	<b>27,643</b>	<b>40,996</b>	<b>55,549</b>	<b>73,337</b>	<b>37,559</b>	<b>79,000</b>
(Total Overseas Sales)	(27,896)	(9,651)	(18,768)	(26,097)	(36,884)	(18,527)	-

■ Semiconductor Mfg. Mach.    ■ Industrial Msg. Mach.  
■ In-line Msg. Mach.            ■ Others

(Yen Billion)



# 3. Order Backlog (Non-Consolidated)

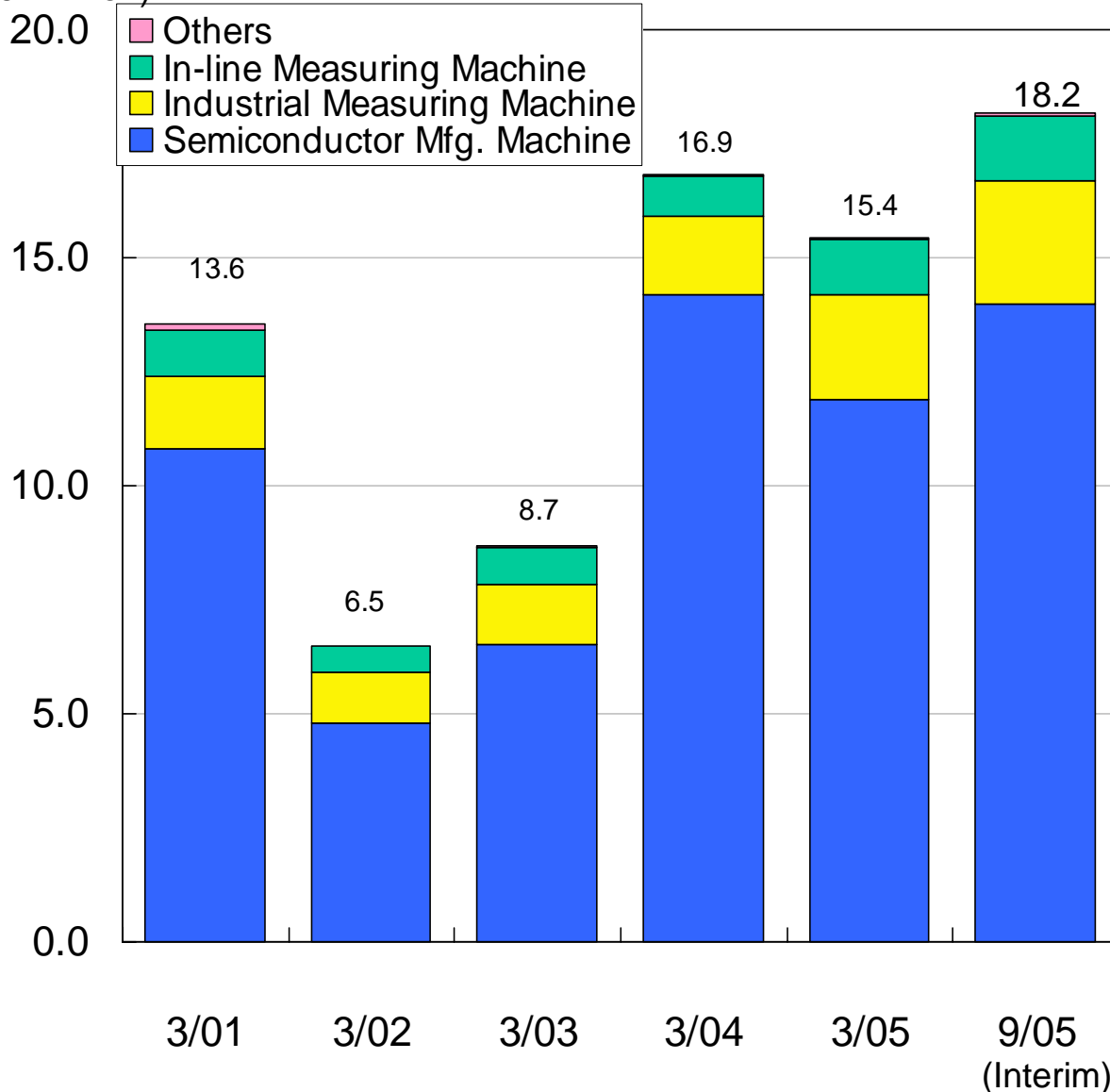


(Yen Million)

Interim

	3/01	3/02	3/03	3/04	3/05	9/05
Semiconductor Mfg. Machine	10,788	4,838	6,524	14,237	11,884	14,099
Industrial Measuring Machine	1,618	1,092	1,325	1,713	2,276	2,653
In-line Measuring Machine	996	576	806	875	1,207	1,353
Others	161	16	51	37	43	84
<b>Total</b>	<b>13,564</b>	<b>6,523</b>	<b>8,708</b>	<b>16,863</b>	<b>15,410</b>	<b>18,189</b>

(Yen Billion)



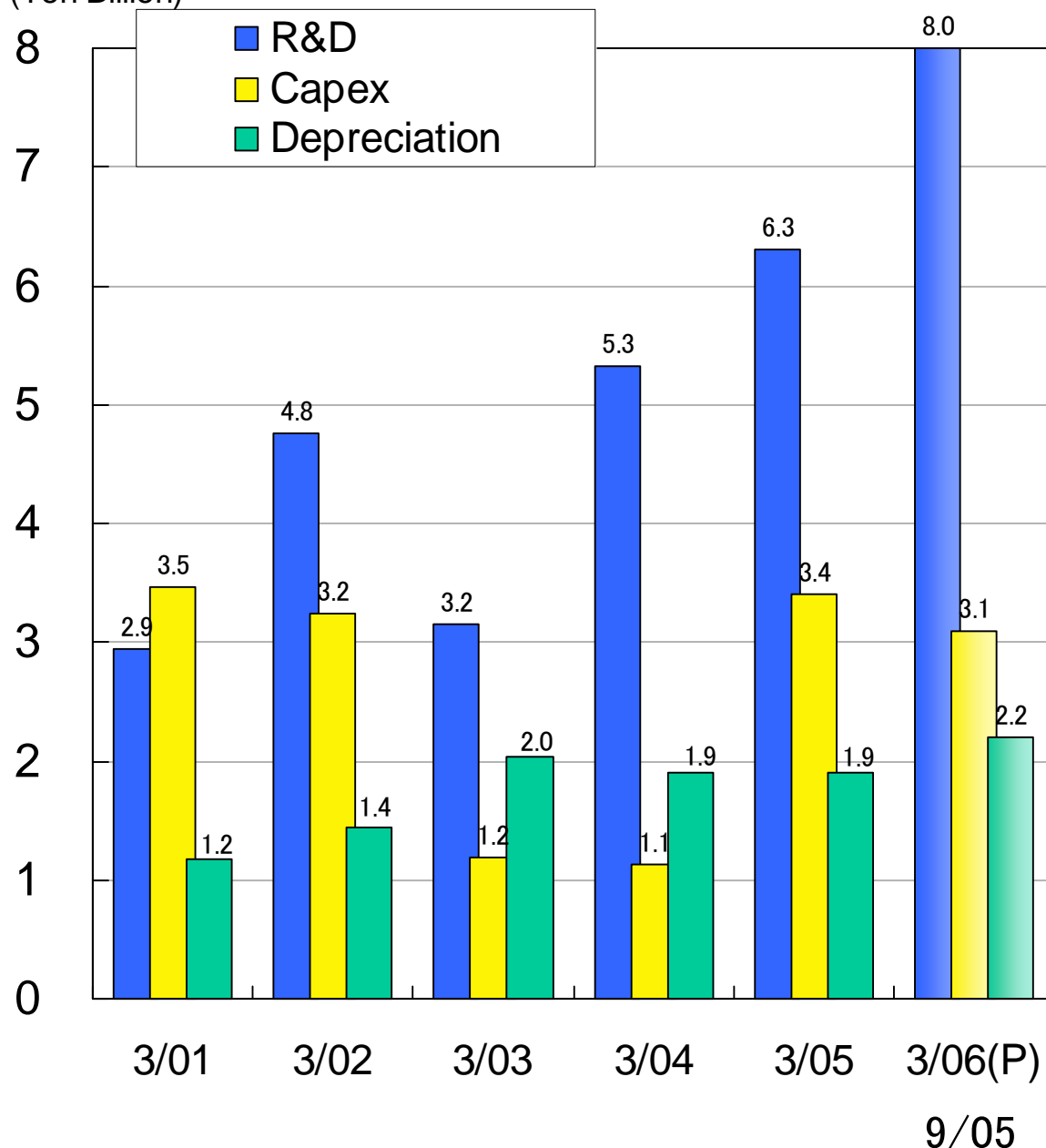
# 4. R&D, Capex & Depreciation (Non-Consolidated)



(yen Million)

	3/01	3/02	3/03	3/04	3/05	Interim 9/05	Full Year 3/06(P)
R&D	2,941	4,758	3,156	5,321	6,263	3,597	7,980
Capex	3,470	3,242	1,186	1,124	3,435	1,970	3,130
Depreciation	1,174	1,441	2,042	1,907	1,922	1,056	2,230

(Yen Billion)

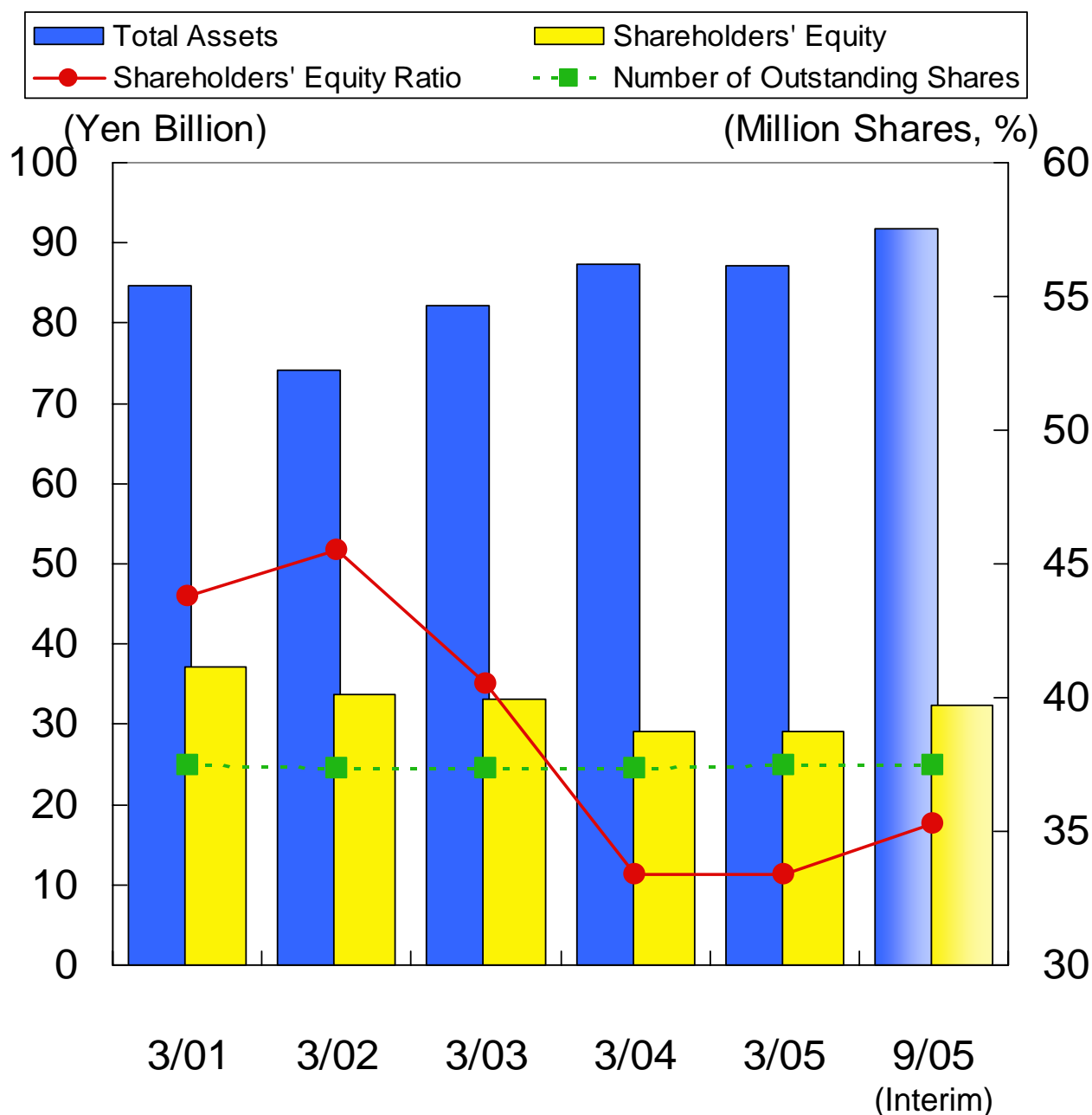


# 5. Balance Sheet (Non-Consolidated)



(Yen Million, Share)  
Interim

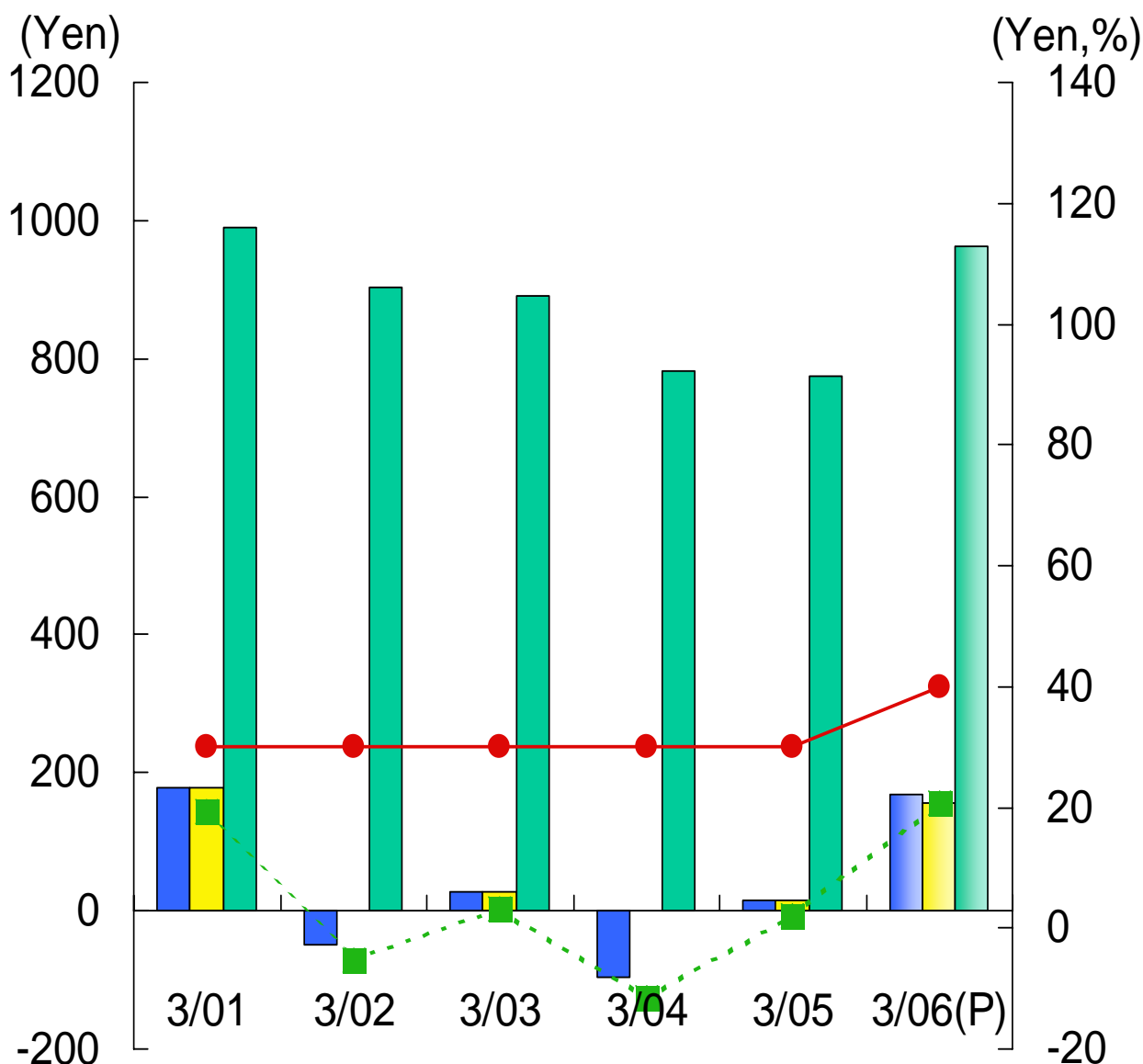
	3/01	3/02	3/03	3/04	3/05	9/05
Total Assets	84,788	74,130	82,163	87,385	87,161	91,706
Shareholders' Equity	37,096	33,752	33,247	29,204	29,088	32,347
Number of Outstanding Shares	37,465,771	37,370,643	37,355,873	37,354,830	37,495,725	37,494,533
Shareholders' Equity Ratio	43.8%	45.5%	40.5%	33.4%	33.4%	35.3%



# 6. Per Share indexes, & ROE (Non-Consolidated)



	3/01	3/02	3/03	3/04	3/05	Interim 9/05	Full Year 3/06(P)
Number of Outstanding Shares	37,465,771	37,370,643	37,355,873	37,354,830	37,495,725	37,494,533	39,205,736
Net Income per Share	178.32	-49.50	27.63	-96.16	16.16	92.18	169.49
EPS after adjustment of unissued shares	177.64	-	27.59	-	14.79	84.13	154.99
Shareholders' Equity per Share	990.13	903.17	890.03	781.80	775.78	862.71	862.12
Dividend per Share	30	30	30	30	30	20	40
ROE(%)	19.3%	-5.2%	3.1%	-11.5%	2.1%	11.3%	20.7%



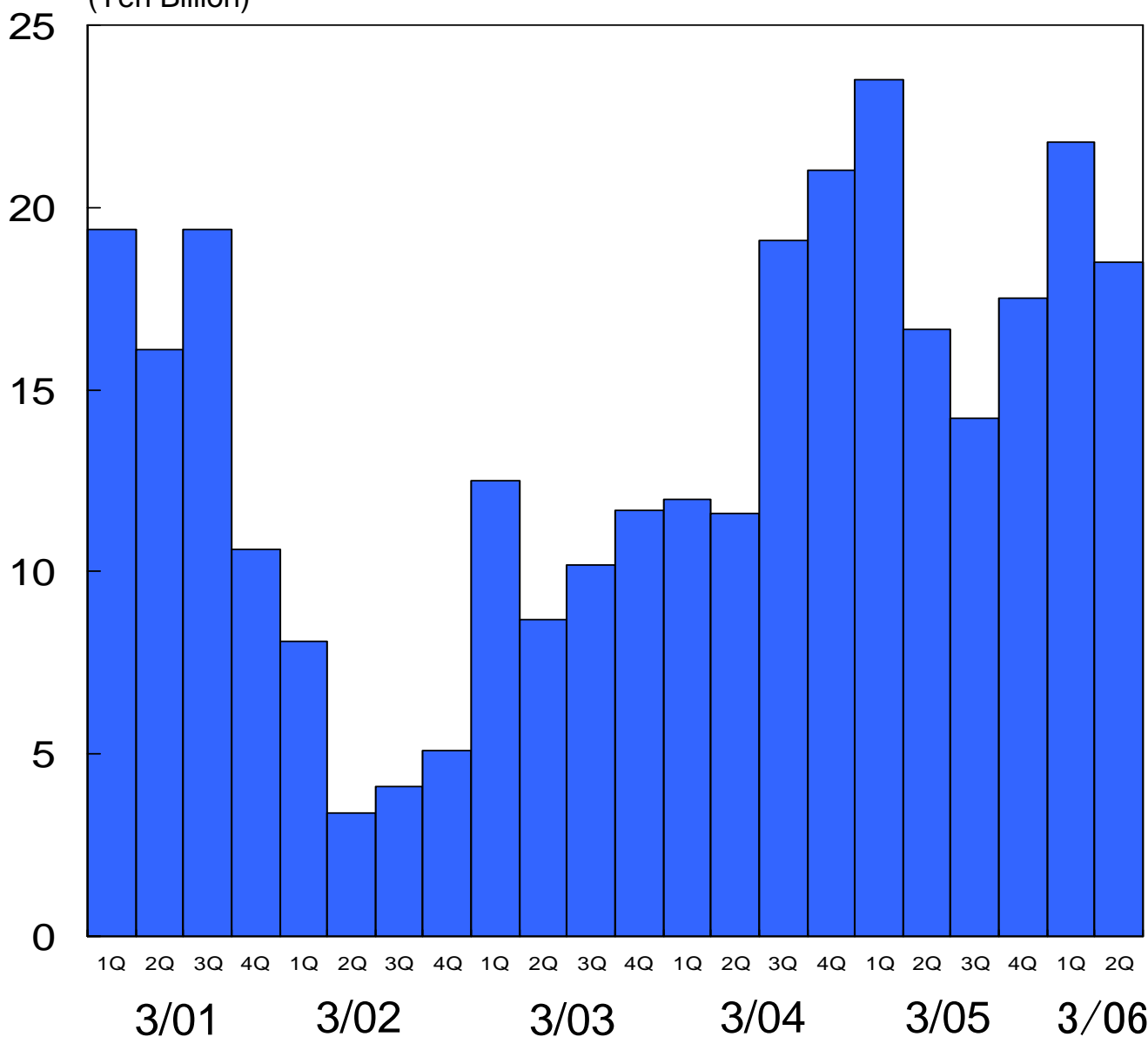
# 7. Quarterly Orders (Non-Consolidated)



(Yen Million)

	3/01	3/02	3/03	3/04	3/05	3/06
1Q	19,362	8,085	12,537	11,959	23,455	21,797
2Q	16,109	3,408	8,695	11,617	16,652	18,541
3Q	19,442	4,050	10,220	19,086	14,236	
4Q	10,590	5,056	11,730	21,041	17,541	

(Yen Billion)



# 8. Quarterly Sales (Non-Consolidated)



(Yen Billion)

	3/01	3/02	3/03	3/04	3/05	3/06
1Q	12,472	9,070	6,673	10,417	17,736	14,812
2Q	18,590	7,106	12,877	12,688	21,770	22,747
3Q	14,614	4,490	7,706	10,692	13,550	
4Q	18,928	6,977	13,741	21,752	20,281	

