

Tokyo Seimitsu Co., Ltd.



Reference Data for FY2005 Earnings

Contents

I. Consolidated

1. Operating Results
2. Sales by Product Group
3. Order Backlog
4. R&D, Capex & Depreciation
5. Balance Sheet
6. Per Share Indexes, ROE
7. Quarterly Orders
8. Quarterly Sales

II. Non-Consolidated

1. Operating Results
2. Sales by Product Group
3. Order Backlog
4. R&D, Capex & Depreciation
5. Balance Sheet
6. Per Share Indexes, ROE
7. Quarterly Orders
8. Quarterly Sales

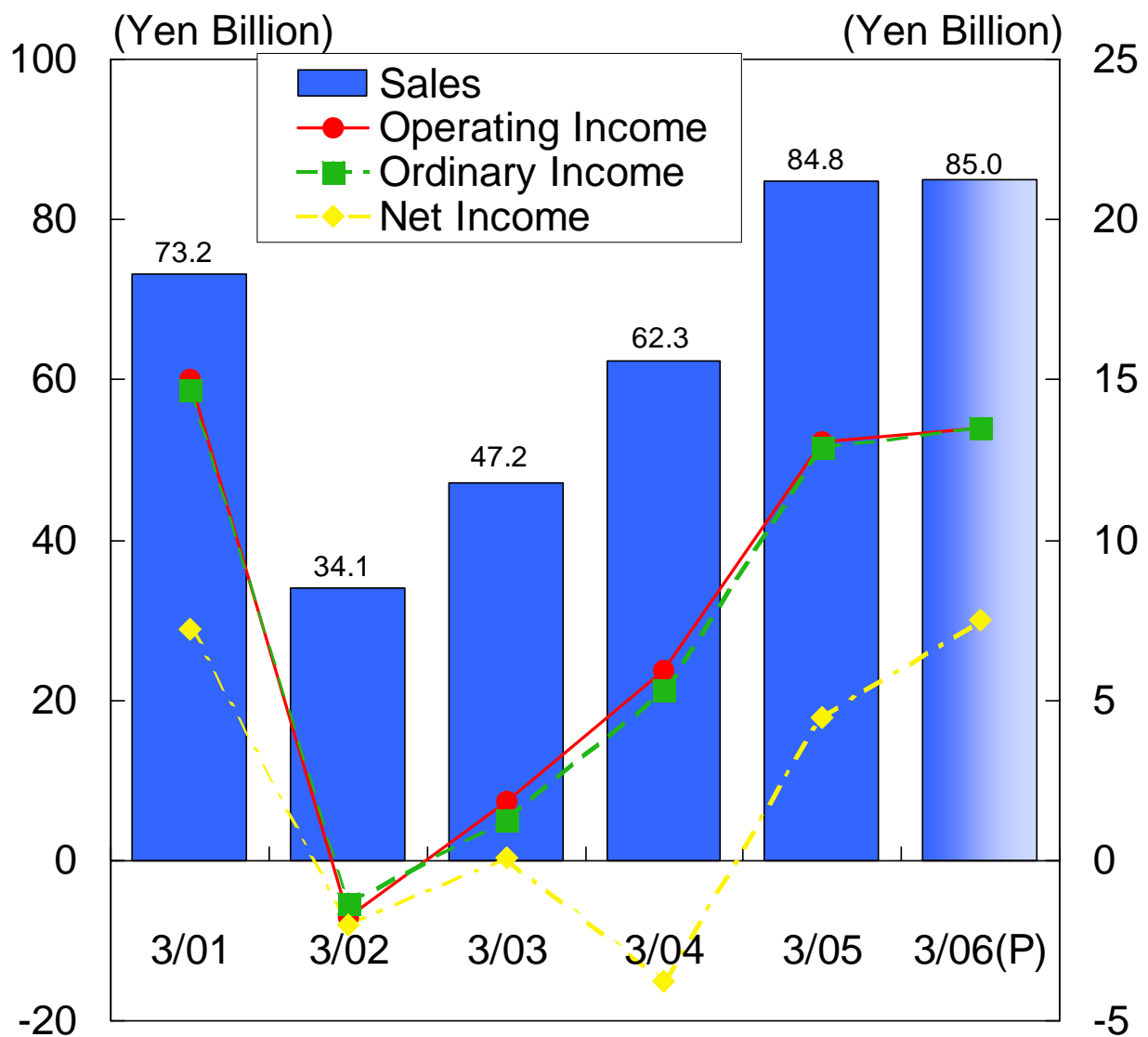
November 17, 2005

1. Operating Results (Consolidated)



(Yen Million)
Interim Full Year

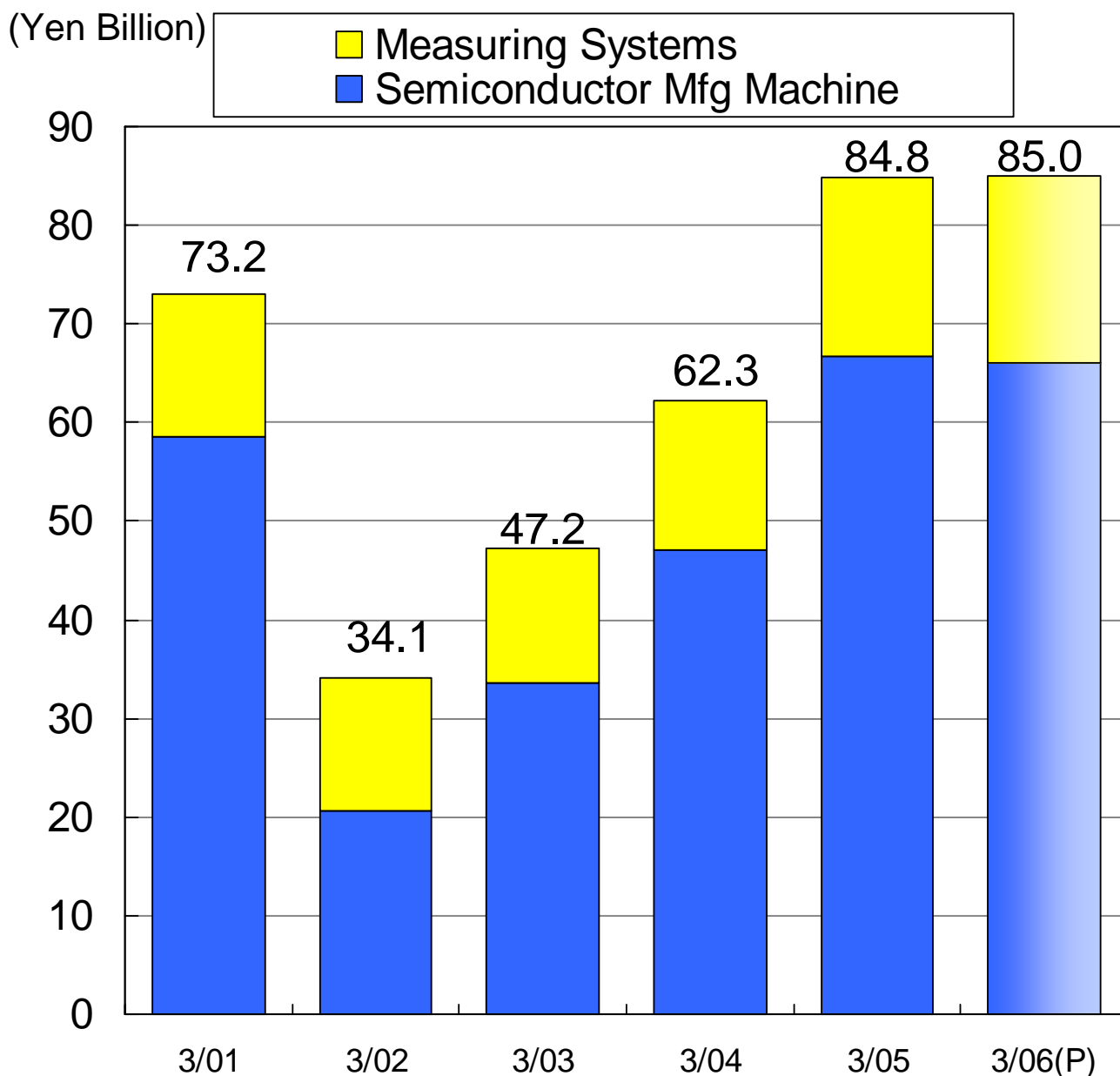
	3/01	3/02	3/03	3/04	3/05	9/05	3/06(P)
Sales	73,172	34,064	47,171	62,324	84,750	42,500	85,000
Operating Income	15,032	-1,757	1,860	5,947	13,051	6,000	13,500
Ordinary Income	14,674	-1,336	1,259	5,328	12,885	6,000	13,500
Net Income	7,237	-2,026	74	-3,783	4,459	3,200	7,500



2. Sales by Product Group (Consolidated)



	(Yen Million)						
	3/01	3/02	3/03	3/04	3/05	Interim 9/05	Full Year 3/06(P)
Semiconductor Mfg. Machine	58,526	20,607	33,561	47,045	66,669	33,000	66,000
Measuring Systems	14,646	13,457	13,610	15,279	18,081	9,500	19,000
Total	73,172	34,064	47,171	62,325	84,750	42,500	85,000

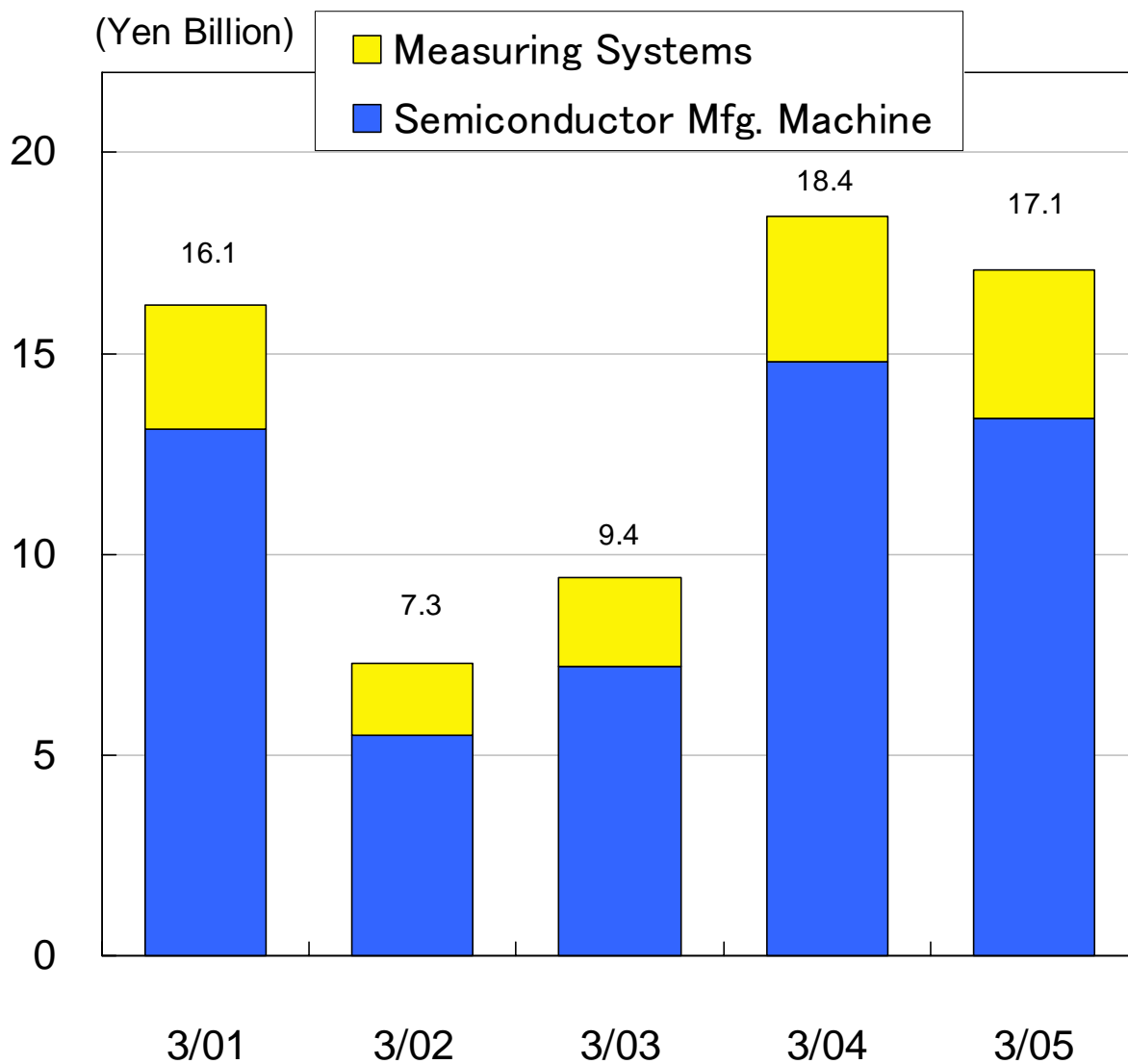


3. Order Backlog (Consolidated)



(Yen Million)

	3/01	3/02	3/03	3/04	3/05
Semiconductor Manufacturing Machine	13,089	5,533	7,212	14,821	13,401
Measuring Systems	3,051	1,810	2,207	3,565	3,690
Total	16,140	7,344	9,420	18,386	17,092

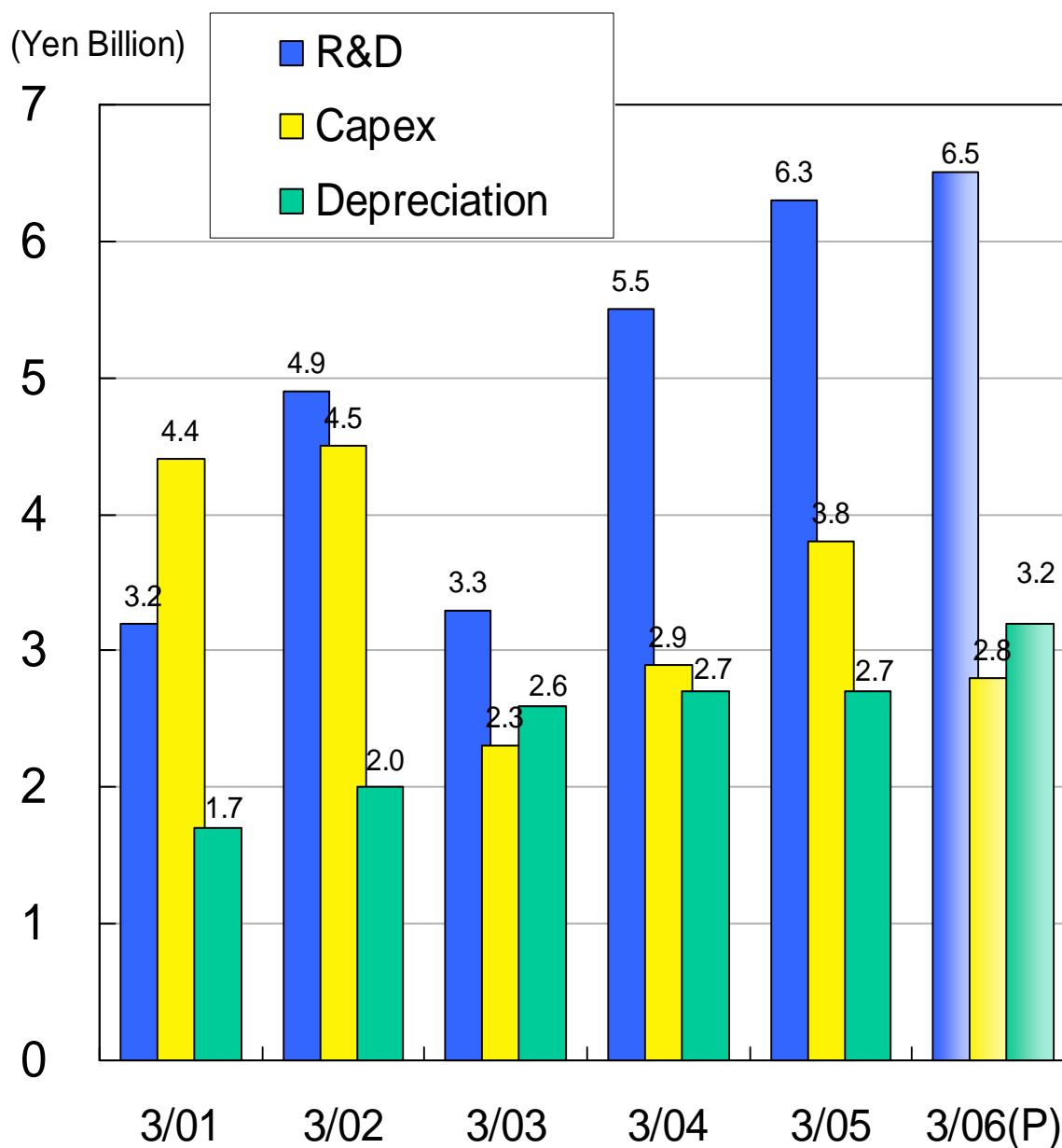


4. R&D, Capex & Depreciation (Consolidated)



(Yen Million)

	3/01	3/02	3/03	3/04	3/05	3/06(P)
R&D	3,188	4,860	3,291	5,531	6,301	6,544
Capex	4,396	4,521	2,333	2,904	3,771	2,788
Depreciation	1,698	2,020	2,579	2,749	2,732	3,198

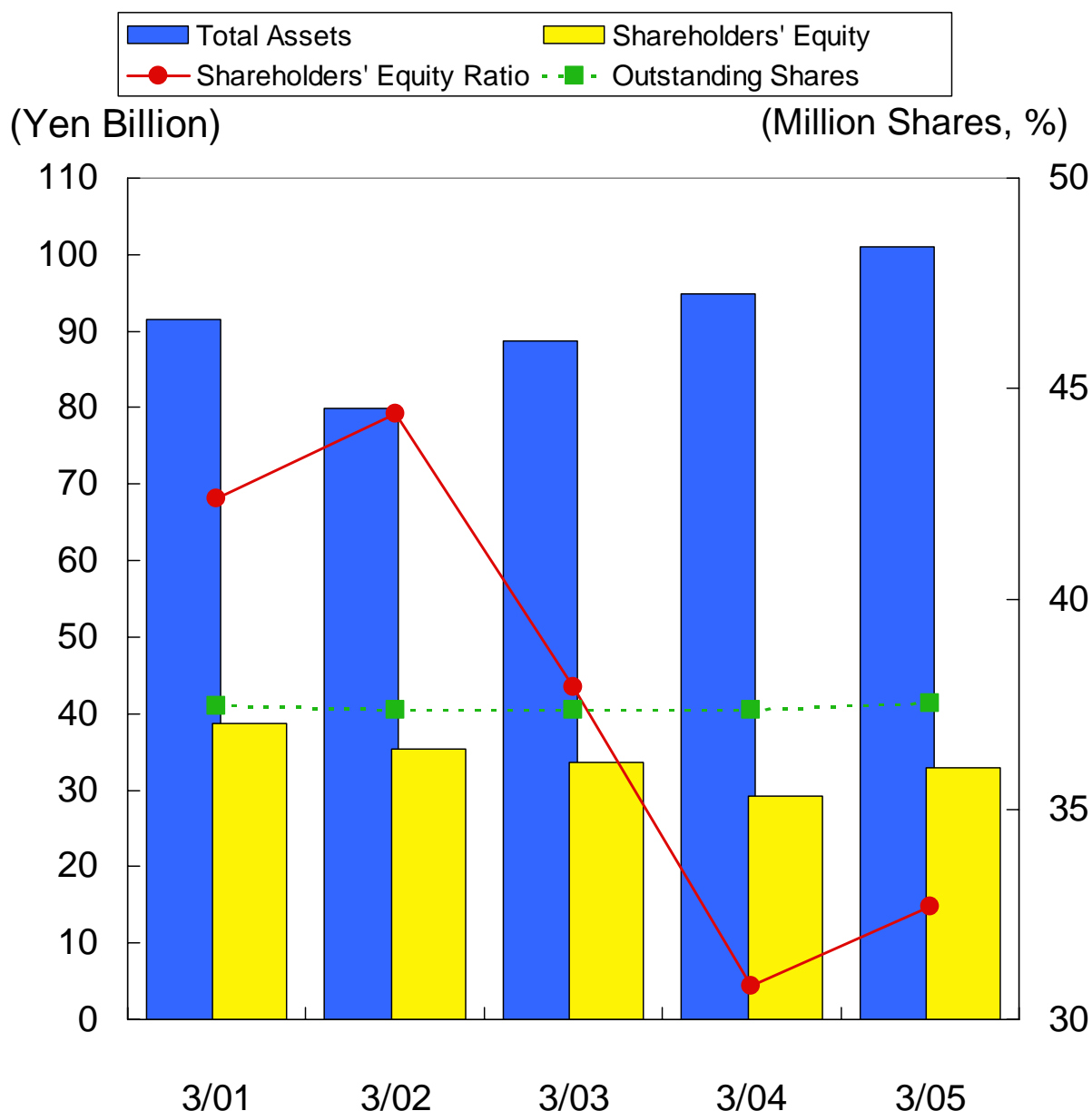


5. Balance Sheet (Consolidated)



(Yen Million, Share)

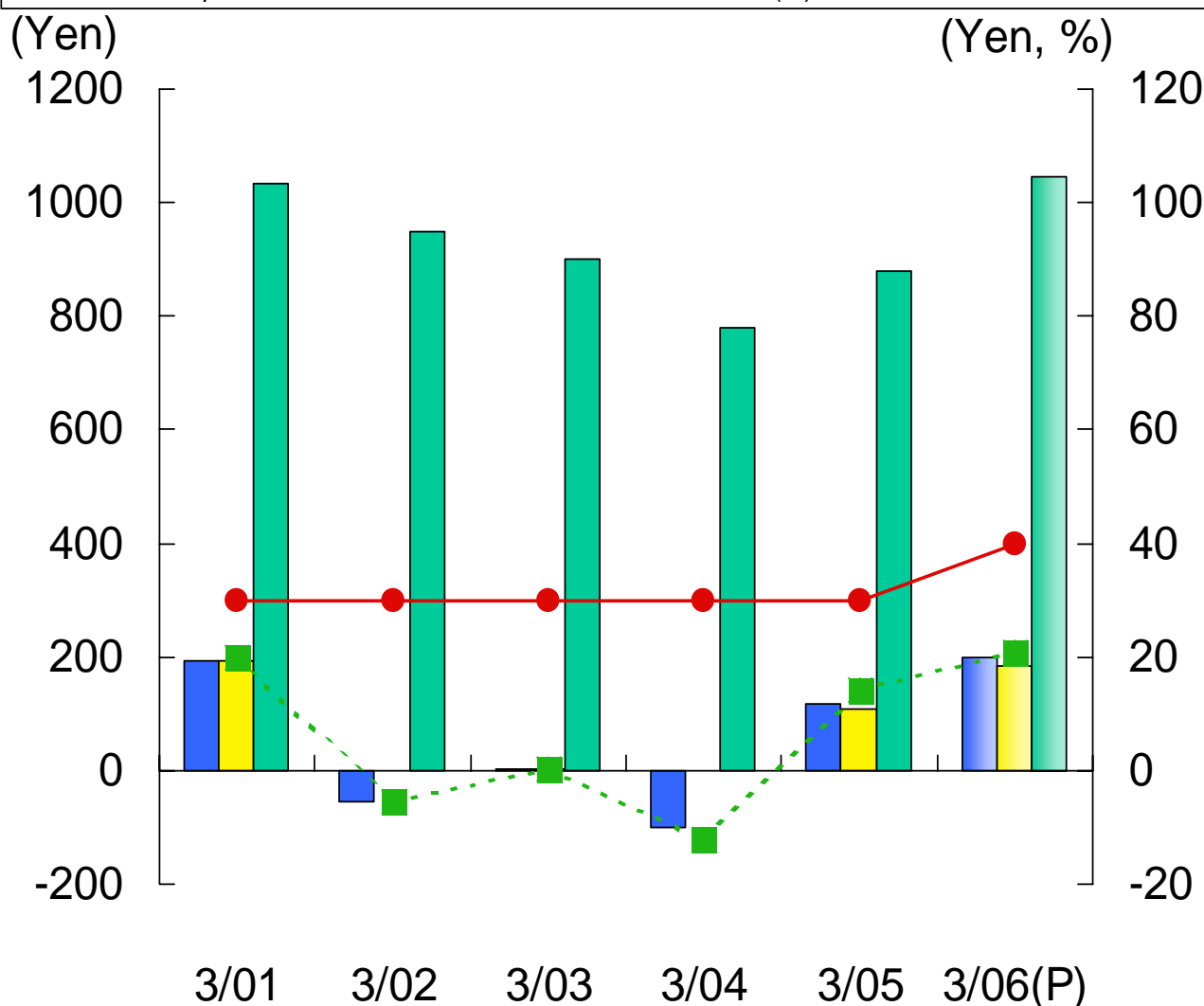
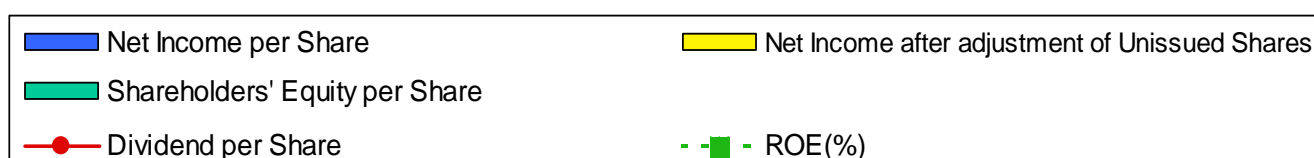
	3/01	3/02	3/03	3/04	3/05
Total Assets	91,477	79,865	88,669	94,893	100,993
Shareholders' Equity	38,779	35,423	33,645	29,183	33,003
Outstanding Shares	37,465,713	37,370,643	37,355,873	37,354,830	37,517,954
Shareholders' Equity Ratio(%)	42.4%	44.4%	37.9%	30.8%	32.7%



6. Per Share indexes, & ROE (Consolidated)



	(Yen, Share)					
	3/01	3/02	3/03	3/04	3/05	3/06(P)
Outstanding Shares	37,465,771	37,370,643	37,355,873	37,354,830	37,495,725	37,495,725
Net Income per Share	192.95	-54.21	1.64	-101.67	118.82	200.02
EPS after adjust. of Unissued Share	192.21	-	1.64	-	108.75	183.09
Shareholders' Equity per Share	1,035.06	947.90	900.32	780.87	879.93	1,045.21
Dividend per Share	30	30	30	30	30	40
ROE(%)	20.0%	-5.5%	0.2%	-12.0%	14.3%	20.8%



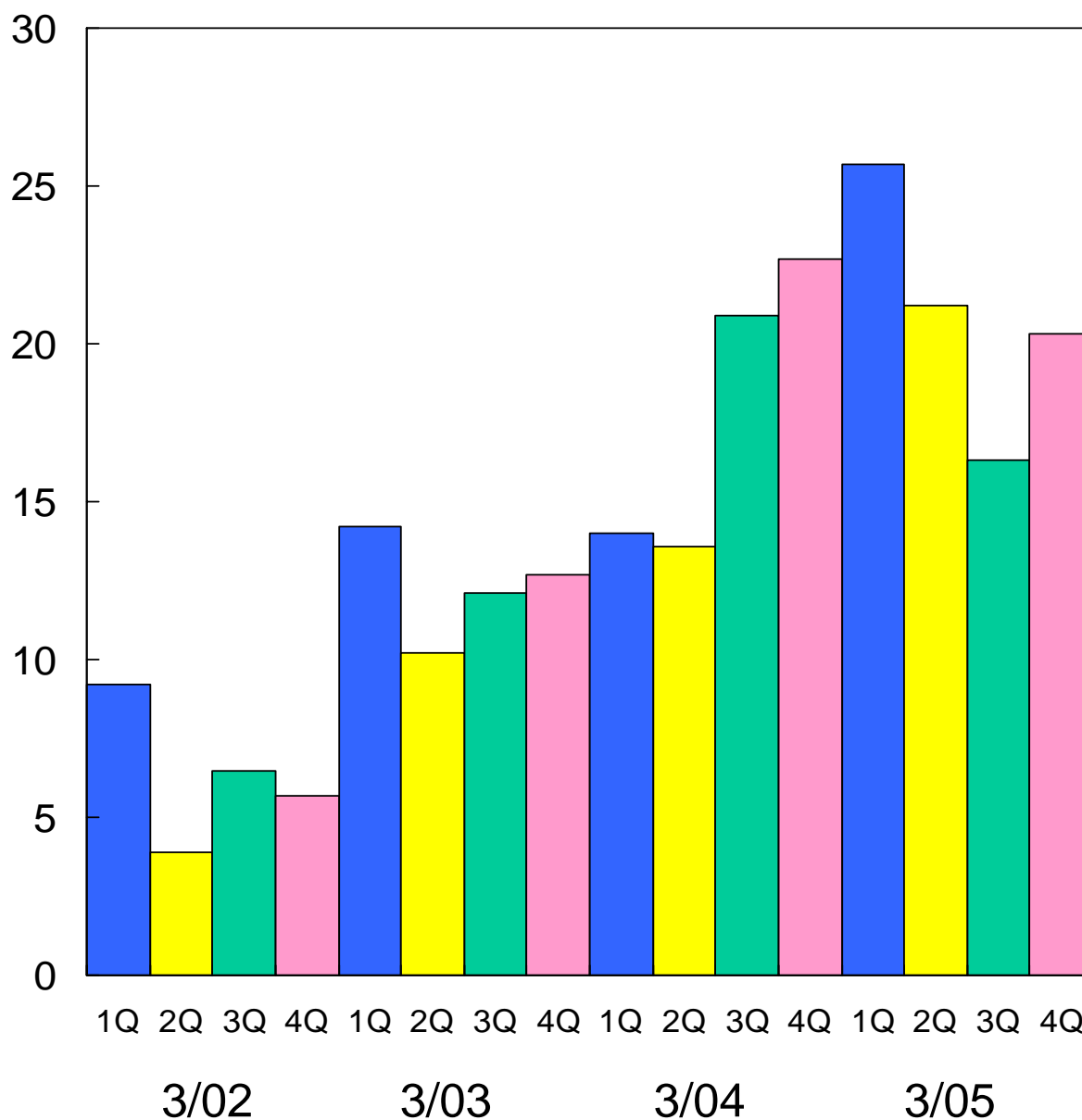
7. Quarterly Orders (Consolidated)



(Yen Billion)

	3/02	3/03	3/04	3/05
1Q	9,161	14,220	14,062	25,740
2Q	3,855	10,234	13,631	21,189
3Q	6,530	12,101	20,851	16,267
4Q	5,723	12,693	22,744	20,260

(Yen Billion)



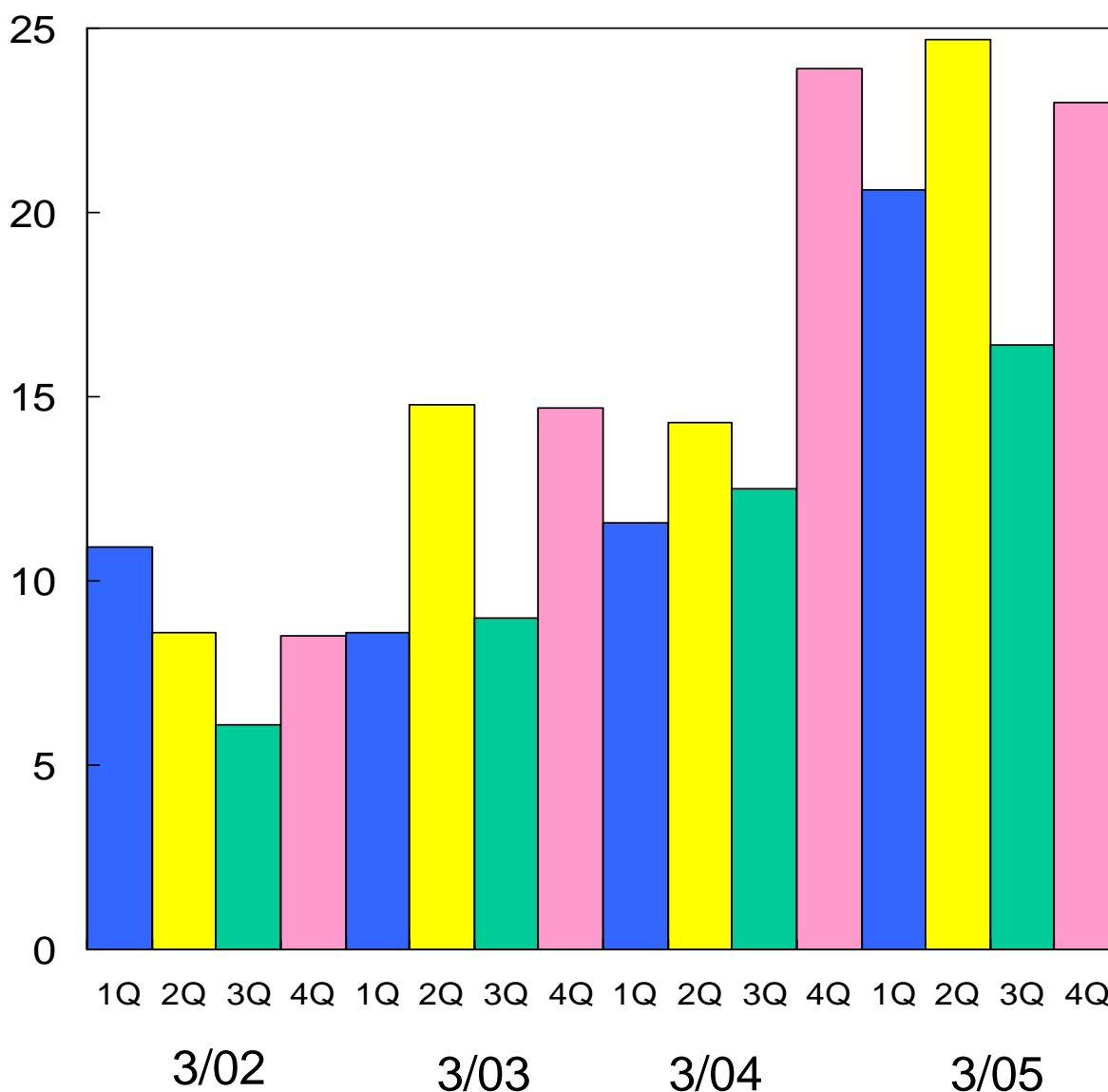
8. Quarterly Sales (Consolidated)



(Yen Million)

	3/02	3/03	3/04	3/05
1Q	10,926	8,562	11,586	20,637
2Q	8,581	14,832	14,323	24,704
3Q	6,091	9,049	12,502	16,395
4Q	8,467	14,729	23,914	23,014

(Yen Billion)

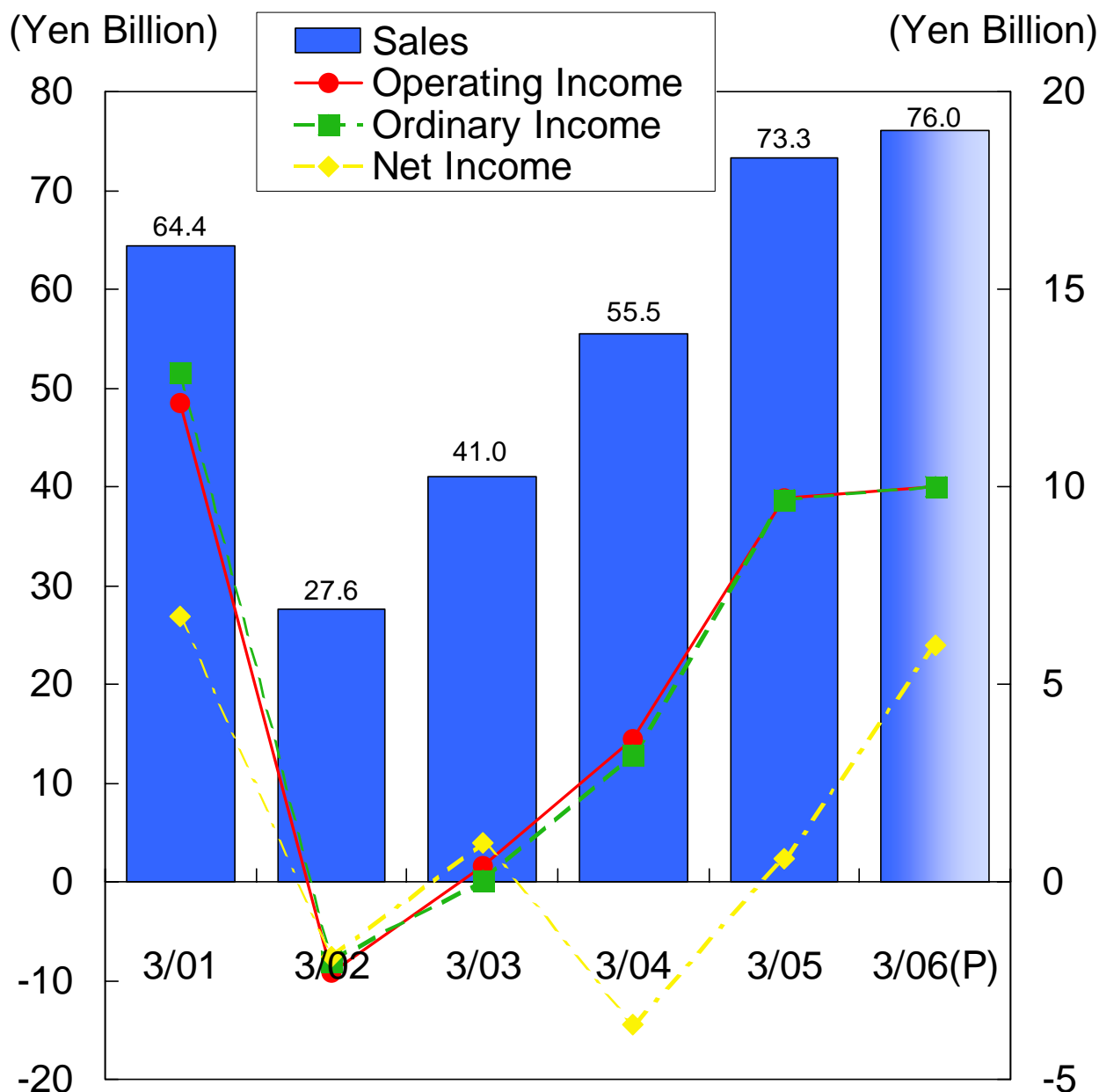


1. Operating Results (Non-Consolidated)



(Yen Million)

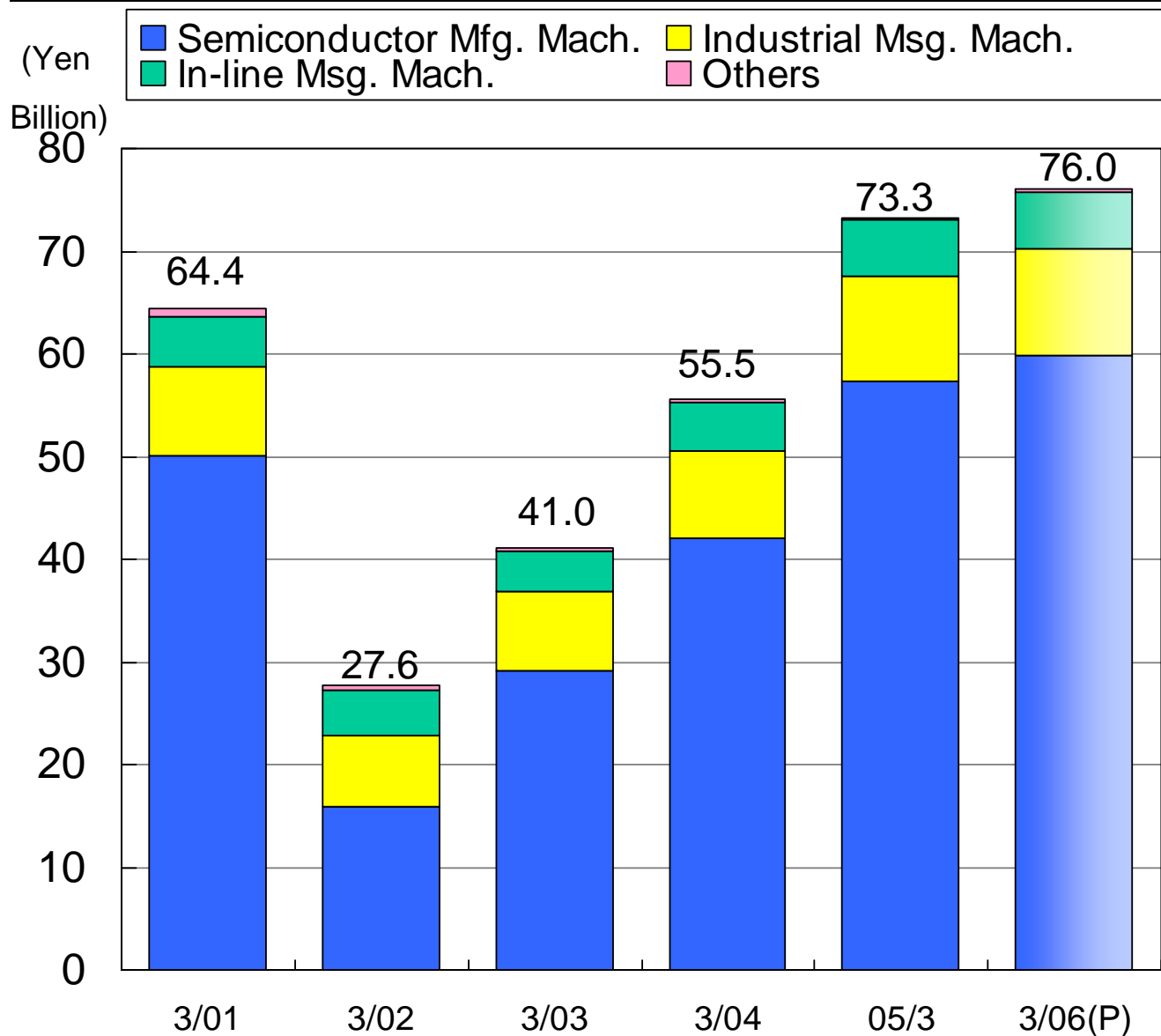
	3/01	3/02	3/03	3/04	3/05	Interim 9/05(P)	Full Year 3/06(P)
Sales	64,423	27,643	40,996	55,549	73,337	38,000	76,000
Operating Income	12,130	-2,304	406	3,616	9,724	4,800	10,000
Ordinary Income	12,942	-1,968	54	3,243	9,677	4,800	10,000
Net Income	6,688	-1,850	1,032	-3,592	605	2,900	6,000



2. Sales by Product Group (Non- Consolidated)



	3/01	3/02	3/03	3/04	3/05	Interim 9/05	Full Year 3/06(P)
Semiconductor Mfg. Machine	50,121	15,897	29,154	42,114	57,335	29,900	59,800
(Overseas Sales)	(26,326)	(8,240)	(17,037)	(24,351)	(34,520)	-	-
Industrial Measuring Machine	8,575	6,969	7,631	8,513	10,257	5,200	10,500
(Overseas Sales)	(1,125)	(1,083)	(1,446)	(1,487)	(1,959)	-	-
In-line Measuring Machine	4,906	4,278	3,959	4,559	5,442	2,800	5,500
(Overseas Sales)	(398)	(283)	(256)	(242)	(380)	-	-
Others	820	498	251	362	303	100	200
(Overseas Sales)	(47)	(43)	(28)	(17)	(25)	-	-
Total	64,423	27,643	40,996	55,549	73,337	38,000	76,000
(Total Overseas Sales)	(27,896)	(9,651)	(18,768)	(26,097)	(36,884)	-	-



3. Order Backlog (Non-Consolidated)

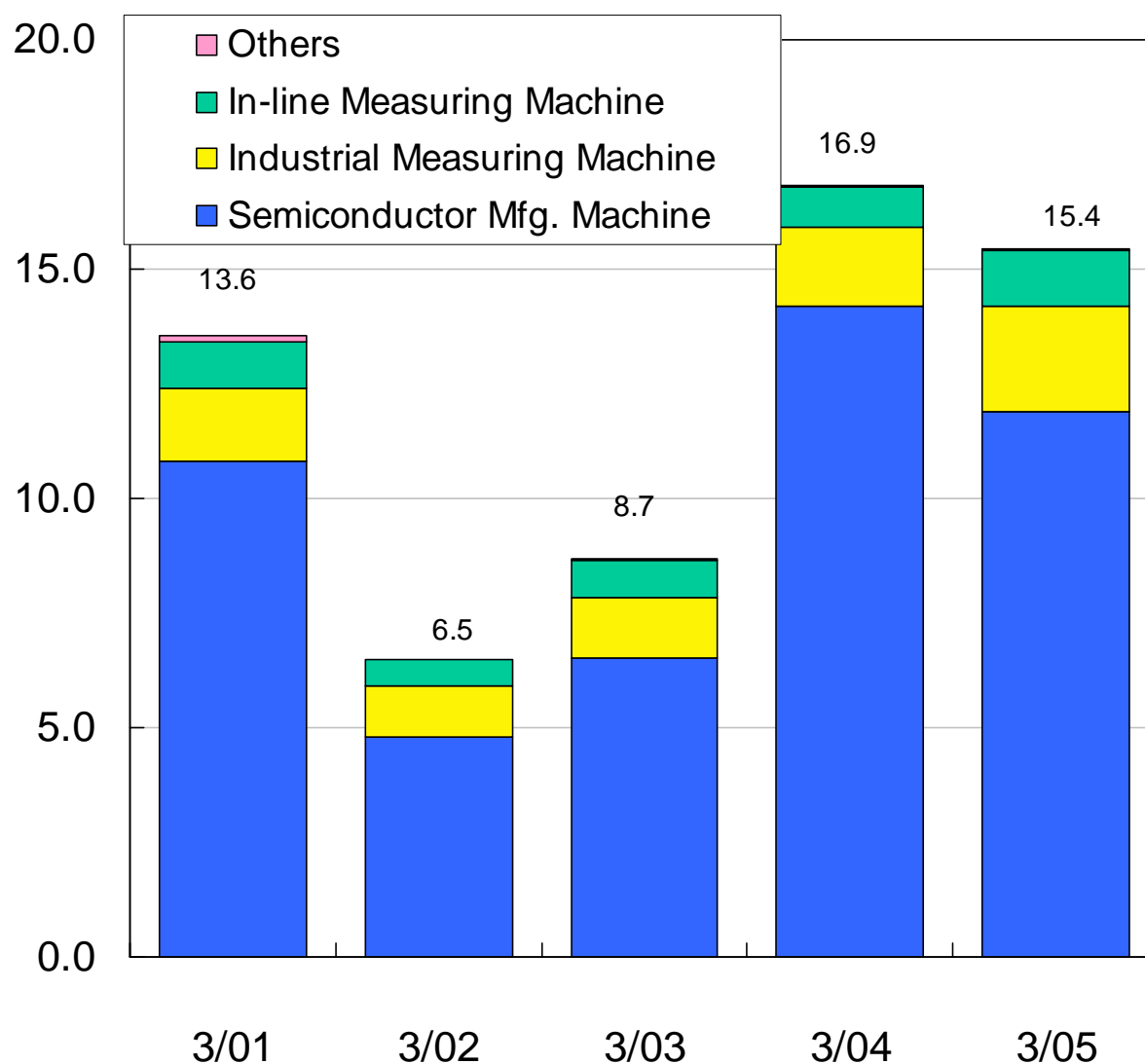


(Yen Million)

Interim

	3/01	3/02	3/03	3/04	3/05
Semiconductor Mfg. Machine	10,788	4,838	6,524	14,237	11,884
Industrial Measuring Machine	1,618	1,092	1,325	1,713	2,276
In-line Measuring Machine	996	576	806	875	1,207
Others	161	16	51	37	43
Total	13,564	6,523	8,708	16,863	15,410

(Yen Billion)



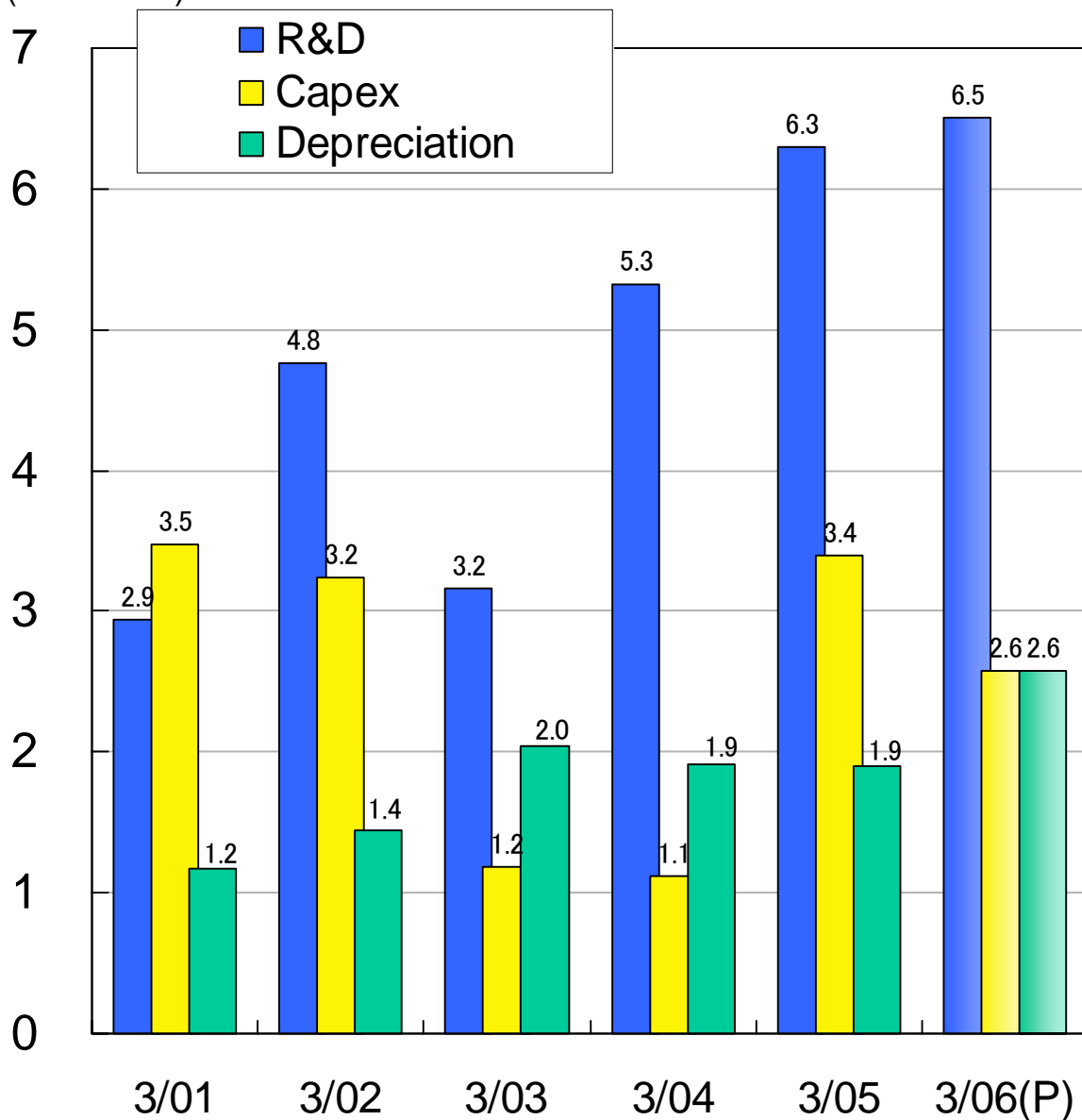
4. R&D, Capex & Depreciation (Non-Consolidated)



(yen Million)

	3/01	3/02	3/03	3/04	Interim 3/05	Full Year 3/06(P)
R&D	2,941	4,758	3,156	5,321	6,263	6,506
Capex	3,470	3,242	1,186	1,124	3,435	2,569
Depreciation	1,174	1,441	2,042	1,907	1,922	2,580

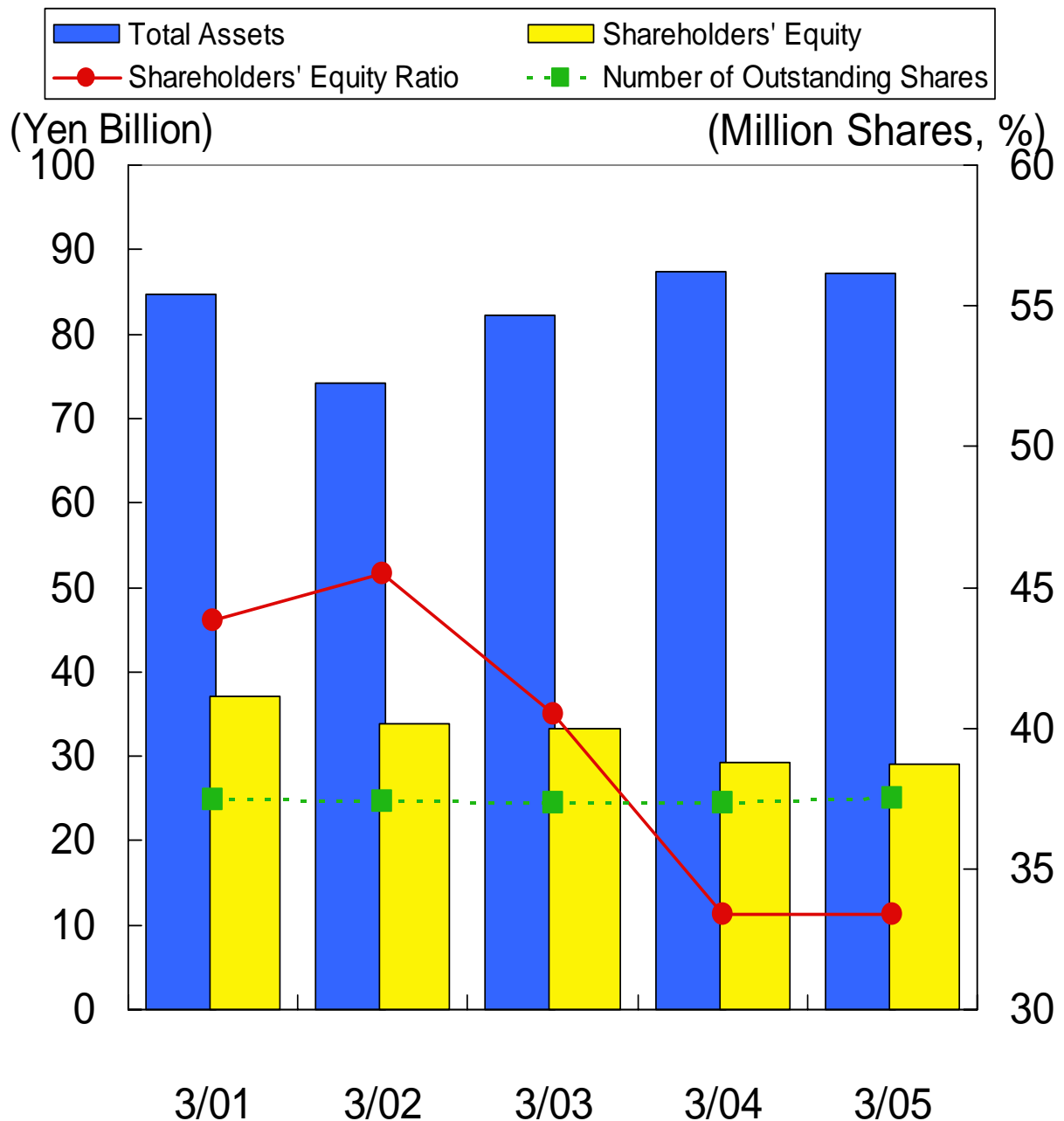
(Yen Billion)



5. Balance Sheet (Non-Consolidated)



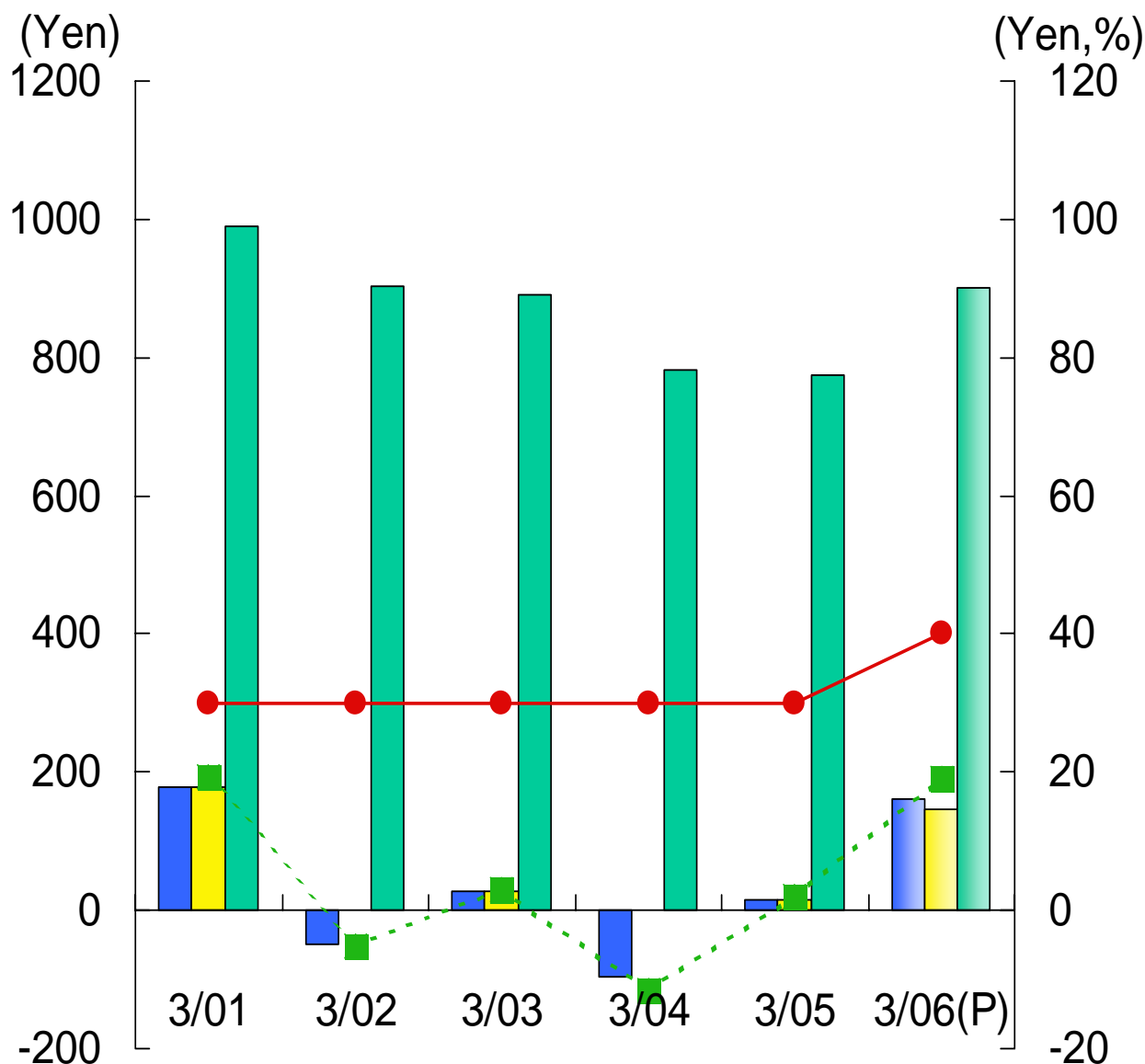
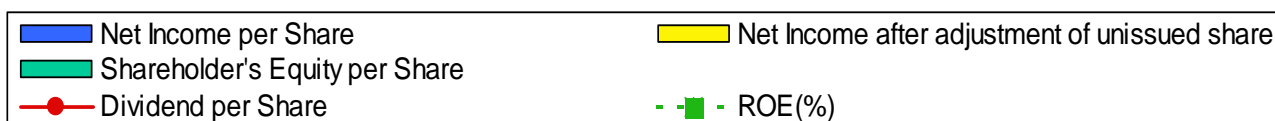
	(Yen Million, Share)				
	3/01	3/02	3/03	3/04	3/05
Total Assets	84,788	74,130	82,163	87,385	87,162
Shareholders' Equity	37,096	33,752	33,247	29,204	29,089
Number of Outstanding Shares	37,465,771	37,370,643	37,355,873	37,354,830	37,517,954
Shareholders' Equity Ratio	43.8%	45.5%	40.5%	33.4%	33.4%



6. Per Share indexes, & ROE (Non-Consolidated)



	(Share, Yen)					
	3/01	3/02	3/03	3/04	3/05	3/06(P)
Number of Outstanding Shares	37,465,771	37,370,643	37,355,873	37,354,830	37,495,725	37,495,725
Net Income per Share	178.32	-49.50	27.63	-96.16	16.16	160.02
EPS after adjustment of unissued shares	177.64	-	27.59	-	14.79	146.47
Shareholders' Equity per Share	990.13	903.17	890.03	781.80	775.78	900.80
Dividend per Share	30	30	30	30	30	40
ROE(%)	19.3%	-5.2%	3.1%	-11.5%	2.1%	19.2%



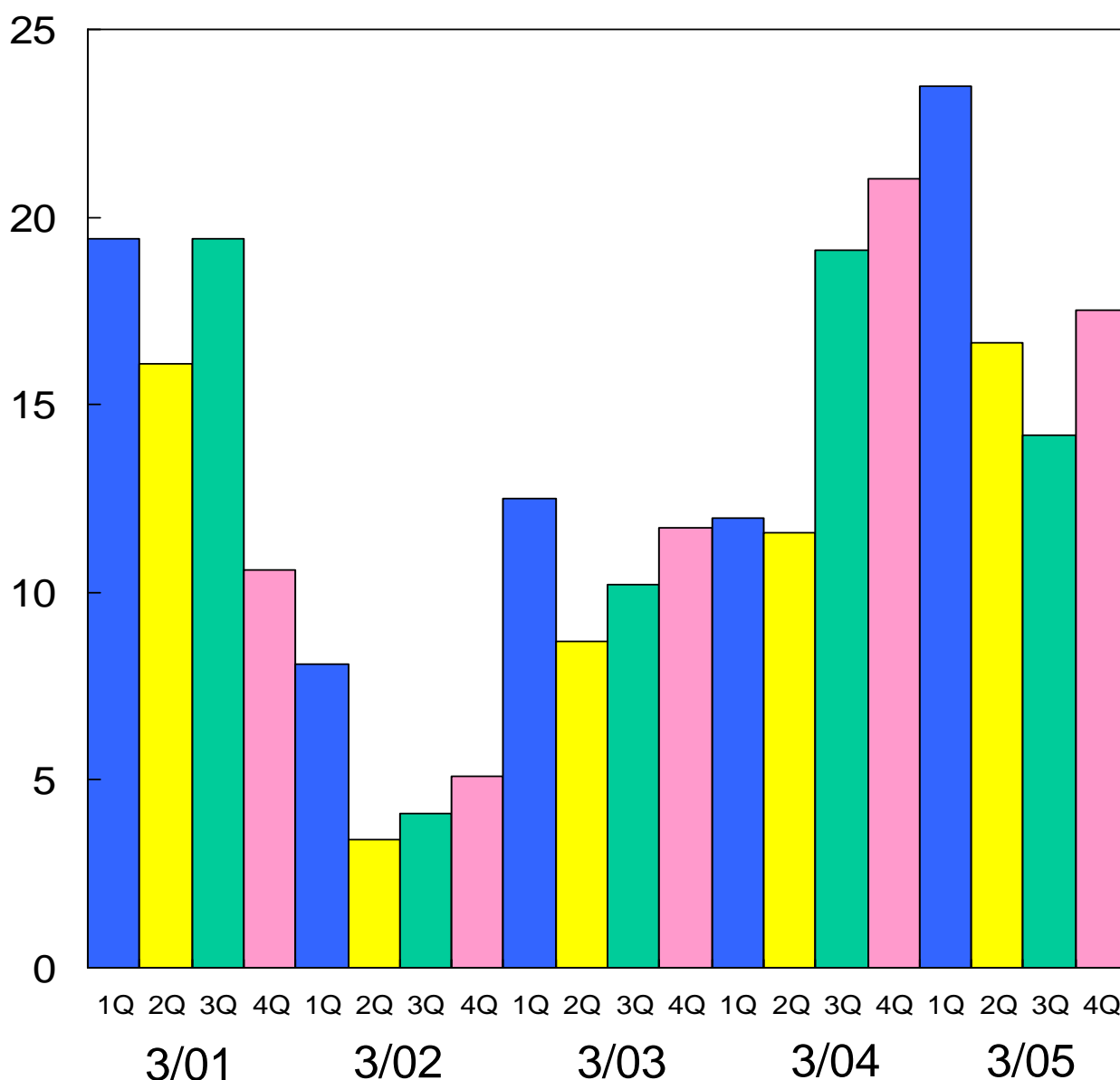
7. Quarterly Orders (Non-Consolidated)



(Yen Million)

	3/01	3/02	3/03	3/04	3/05
1Q	19,362	8,085	12,537	11,959	23,455
2Q	16,109	3,408	8,695	11,617	16,652
3Q	19,442	4,050	10,220	19,086	14,236
4Q	10,590	5,056	11,730	21,041	17,541

(Yen Billion)



8. Quarterly Sales (Non-Consolidated)



(Yen Million)

	3/01	3/02	3/03	3/04	3/05
1Q	12,472	9,070	6,673	10,417	17,736
2Q	18,590	7,106	12,877	12,688	21,770
3Q	14,614	4,490	7,706	10,692	13,550
4Q	18,928	6,977	13,741	21,752	20,281

(Yen Billion)

