

Tokyo Seimitsu Co., Ltd.



Reference Data for FY 2004 Earnings

Contents

I. Consolidated

1. Operating Results
2. Sales by Product Group
3. Order Backlog
4. R&D, Capex & Depreciation
5. Balance Sheet
6. Per Share Indexes, ROE
7. Quarterly Orders
8. Quarterly Sales

II. Non-Consolidated

1. Operating Results
2. Sales by Product Group
3. Order Backlog
4. R&D, Capex & Depreciation
5. Balance Sheet
6. Per Share Indexes, ROE
7. Quarterly Orders
8. Quarterly Sales

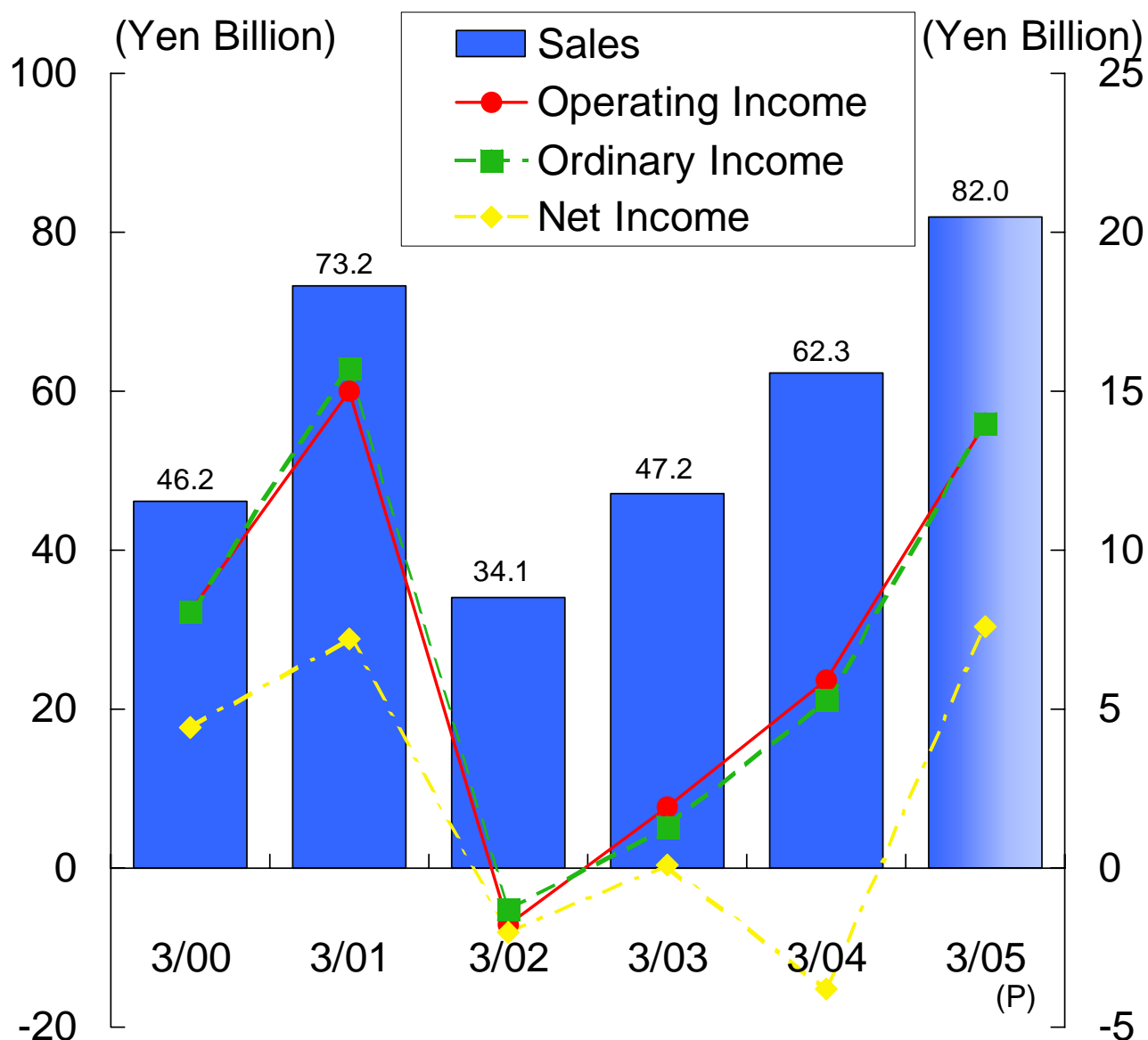
May 18, 2004

1. Operating Results (Consolidated)



(Yen Million)
Interim Full Year

	3/00	3/01	3/02	3/03	3/04	9/04(P)	3/05(P)
Sales	46,176	73,172	34,064	47,171	62,325	41,000	82,000
Operating Income	8,104	15,032	-1,757	1,860	5,947	7,000	14,000
Ordinary Income	8,138	14,674	-1,336	1,259	5,328	7,000	14,000
Net Income	4,422	7,237	-2,026	74	-3,784	3,800	7,600

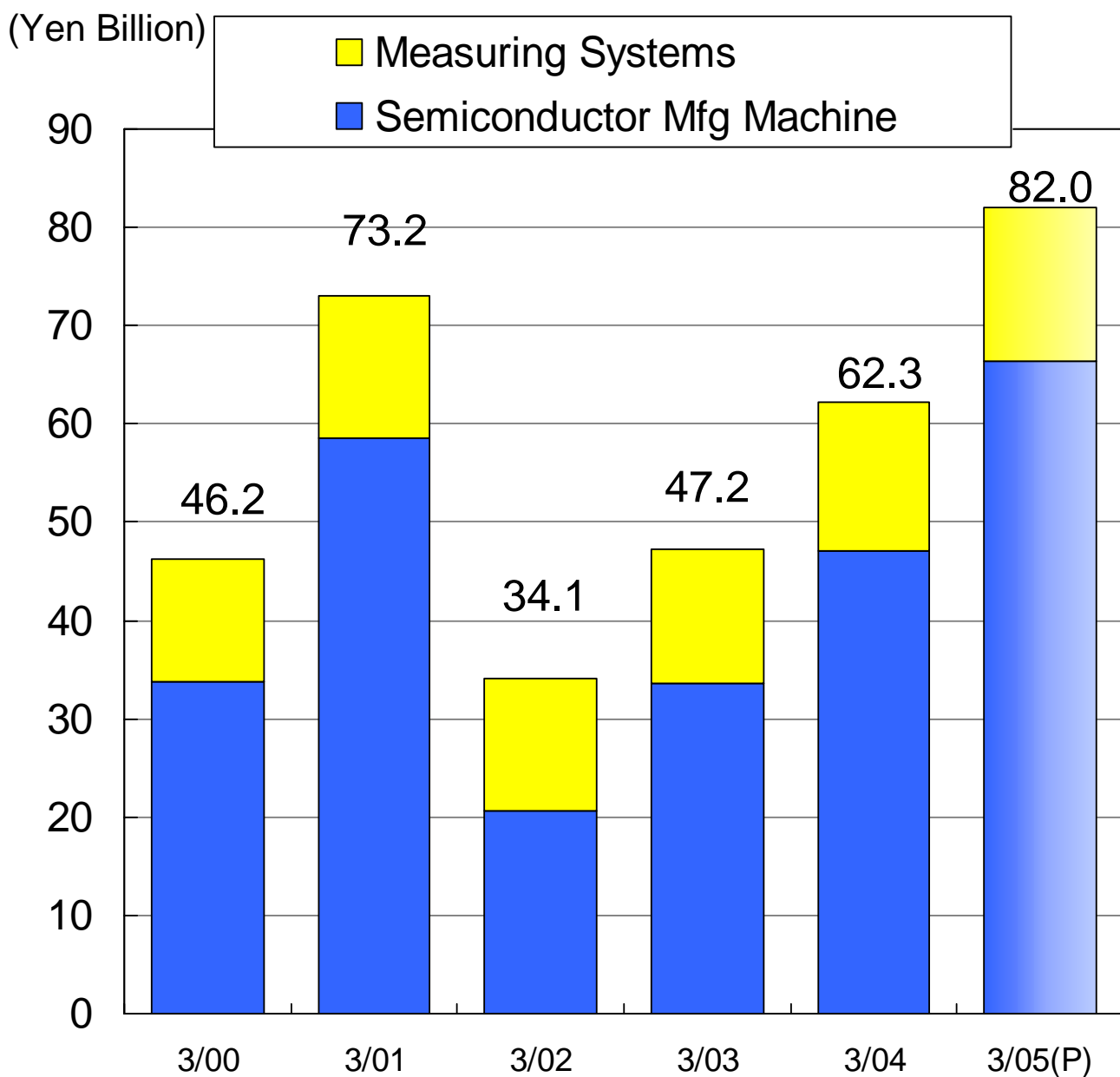


2. Sales by Product Group (Consolidated)



(Yen Million)

	3/00	3/01	3/02	3/03	3/04	Interim 9/04(P)	Full Year 3/05(P)
Semiconductor Mfg. Machine	33,811	58,526	20,607	33,561	47,045	33,200	66,400
Measuring Systems	12,364	14,646	13,457	13,610	15,279	7,800	15,600
Total	46,176	73,172	34,064	47,171	62,325	41,000	82,000

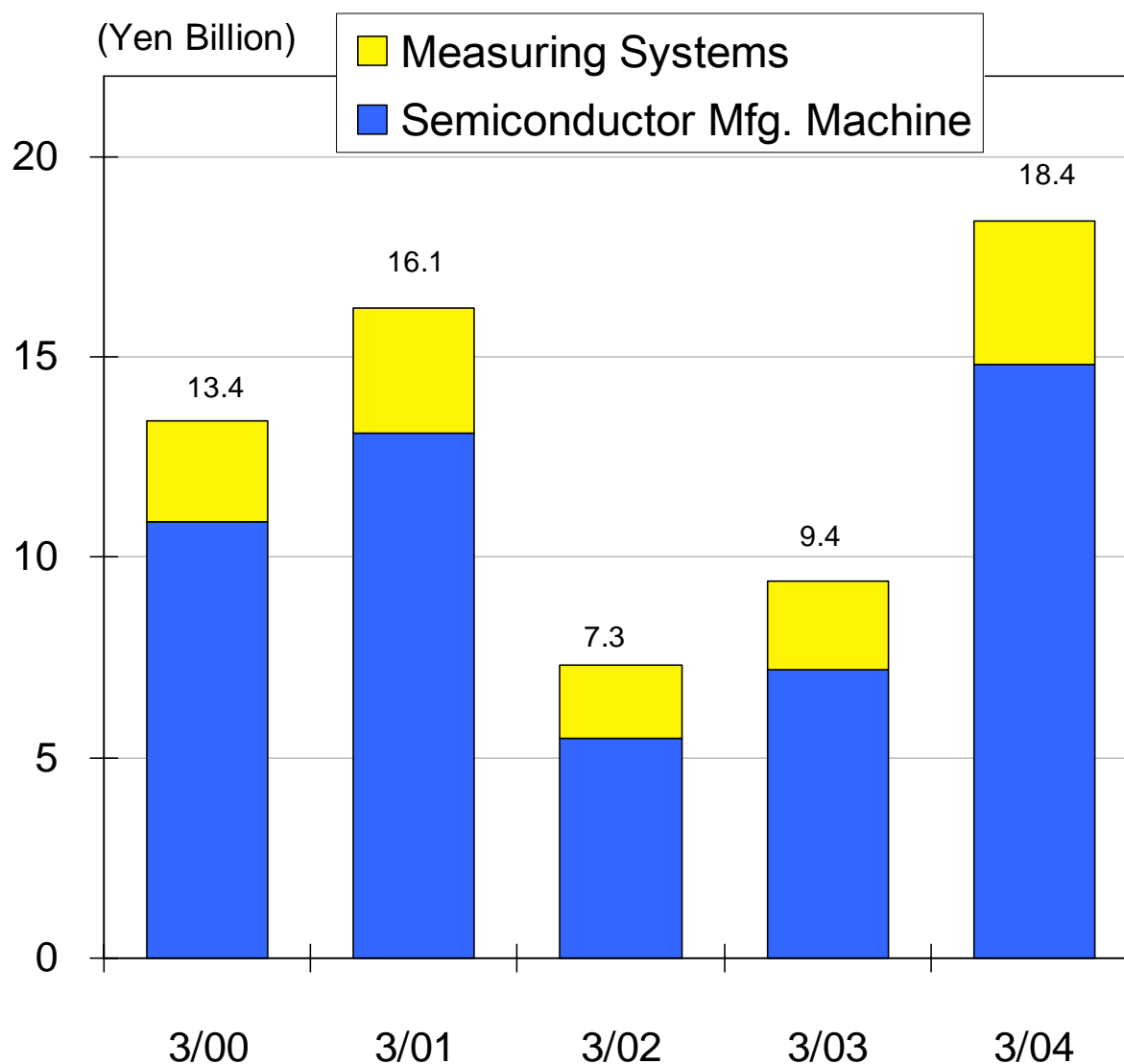


3. Order Backlog (Consolidated)



(Yen Million)

	3/00	3/01	3/02	3/03	3/04
Semiconductor Manufacturing Machine	10,863	13,089	5,533	7,212	14,821
Measuring Systems	2,496	3,051	1,810	2,207	3,565
Total	13,360	16,140	7,344	9,420	18,386

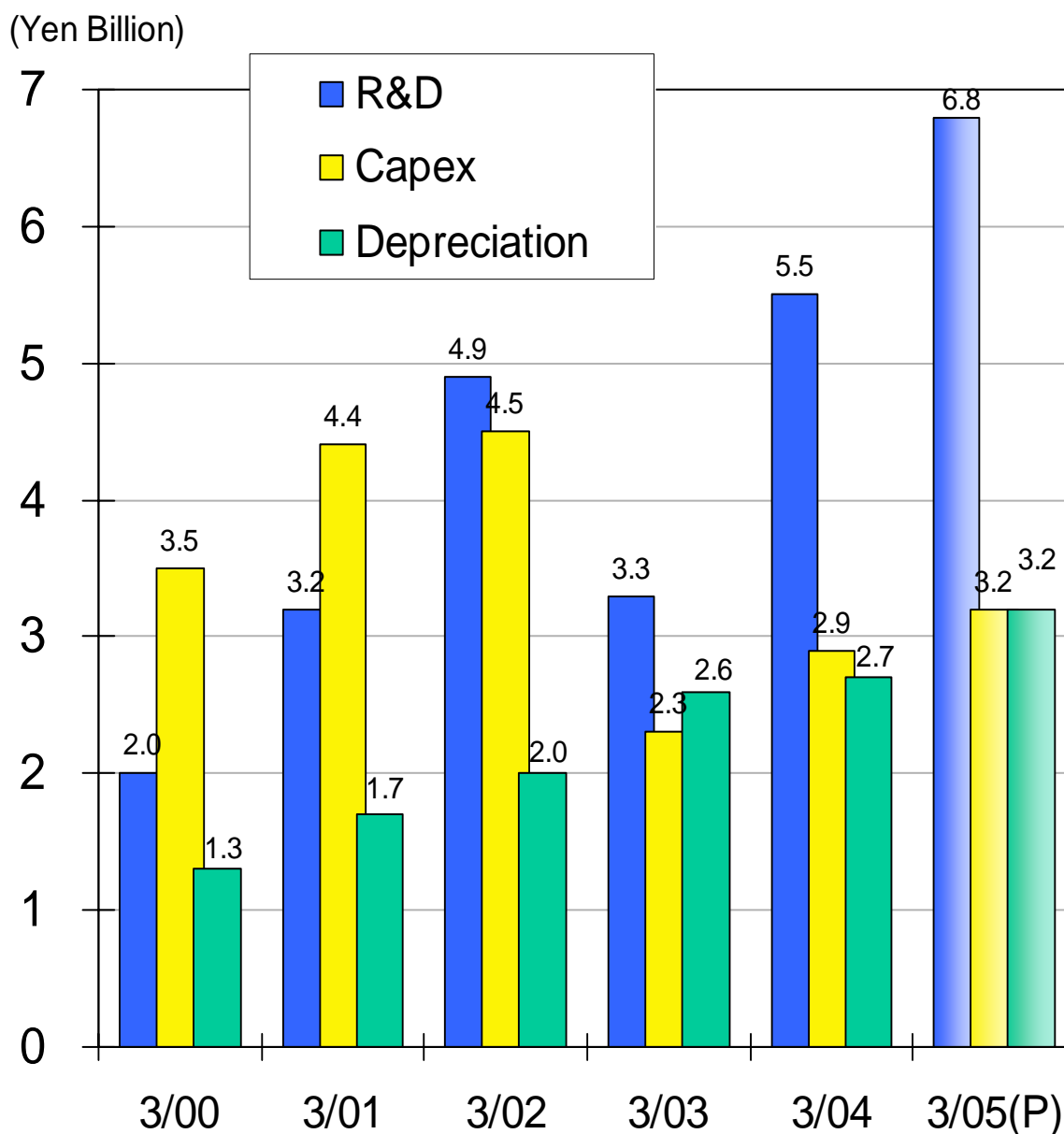


4. R&D, Capex & Depreciation (Consolidated)



(Yen Million)

	3/00	3/01	3/02	3/03	3/04	3/05(P)
R&D	1,961	3,188	4,860	3,291	5,531	6,791
Capex	3,481	4,396	4,521	2,333	2,904	3,156
Depreciation	1,261	1,698	2,020	2,579	2,749	3,168



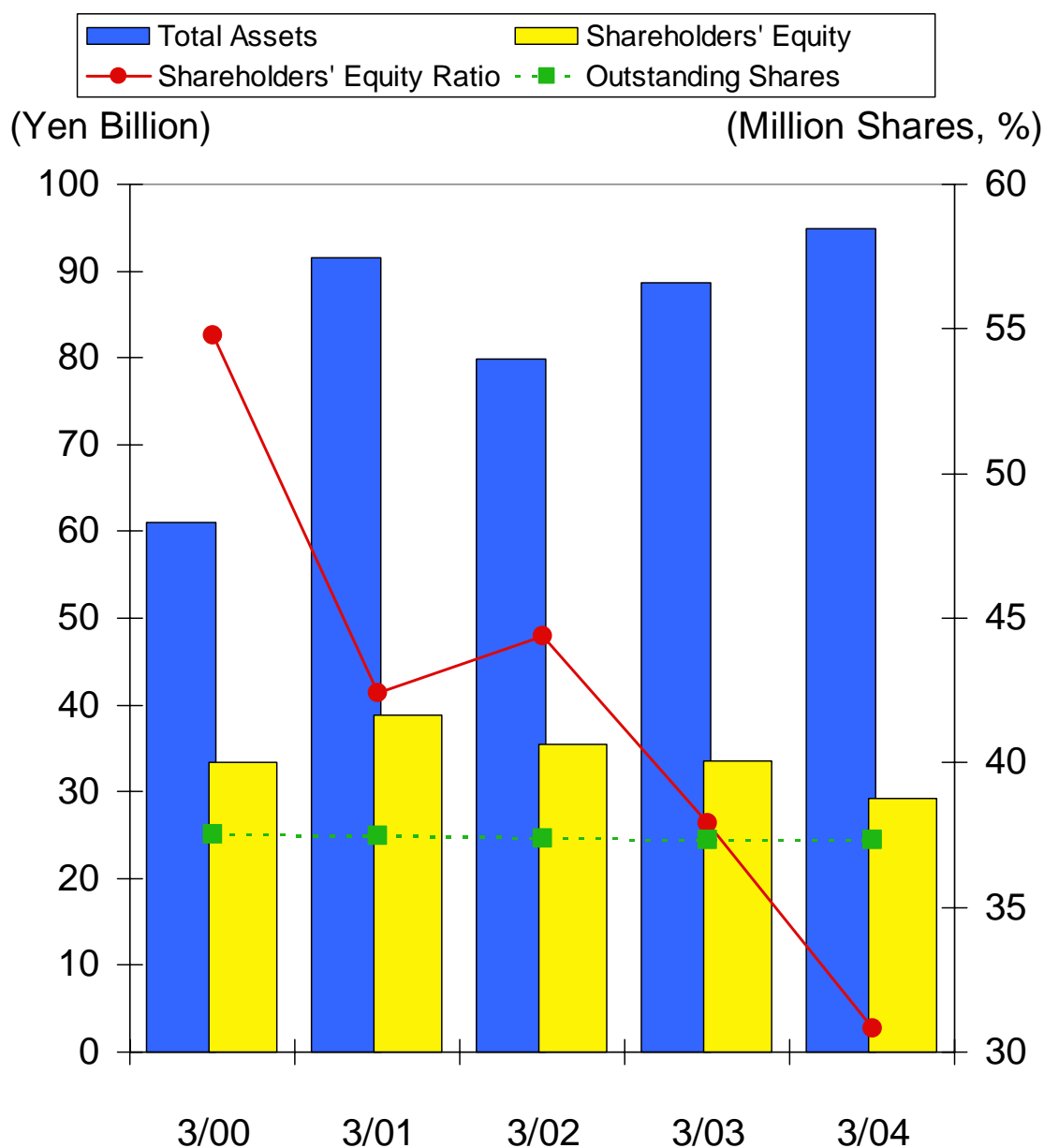
5. Balance Sheet

(Consolidated)



(Yen Million, Share)

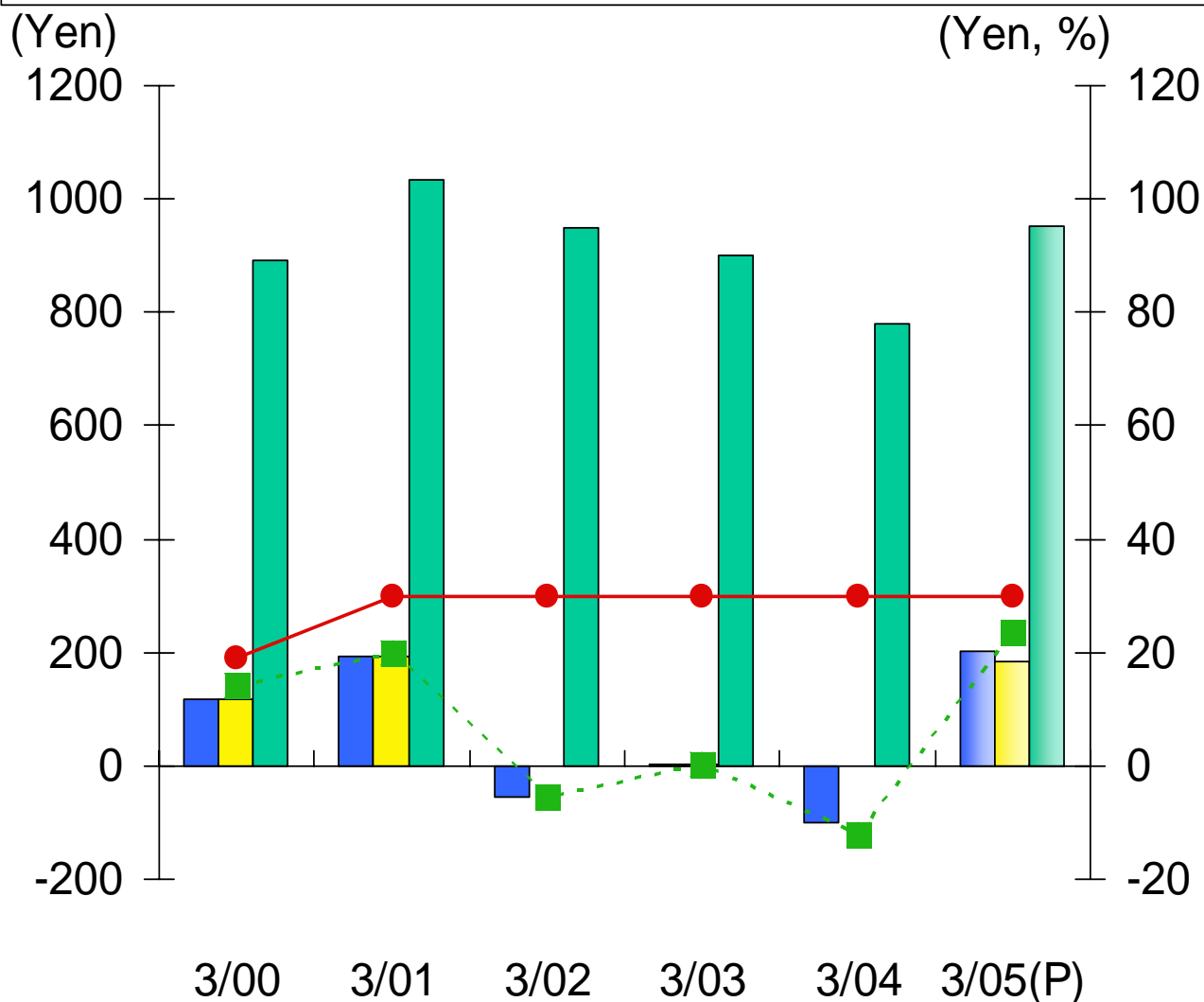
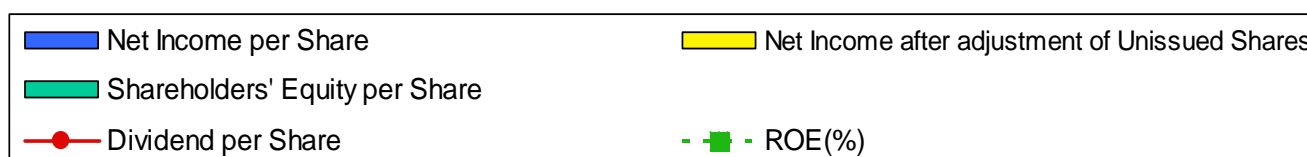
	3/00	3/01	3/02	3/03	3/04
Total Assets	61,007	91,477	79,865	88,669	94,893
Shareholders' Equity	33,433	38,779	35,423	33,645	29,183
Outstanding Shares	37,542,781	37,465,713	37,370,643	37,355,873	37,354,830
Shareholders' Equity Ratio(%)	54.8%	42.4%	44.4%	37.9%	30.8%



6. Per Share indexes, & ROE (Consolidated)



	(Yen, Share)					
	3/00	3/01	3/02	3/03	3/04	3/05(P)
Outstanding Shares	37,543,034	37,465,771	37,370,643	37,355,873	37,354,830	37,354,830
Net Income per Share	118.43	192.95	-54.21	1.64	-101.67	203.45
EPS after adjustment of Unissued Shares	117.95	192.21	-	1.64	-	184.03
Shareholders' Equity per Share	890.55	1,035.06	947.90	900.32	780.87	951.15
Dividend per Share	19	30	30	30	30	30
ROE(%)	14.3%	20.0%	-5.5%	0.2%	-12.0%	23.5%



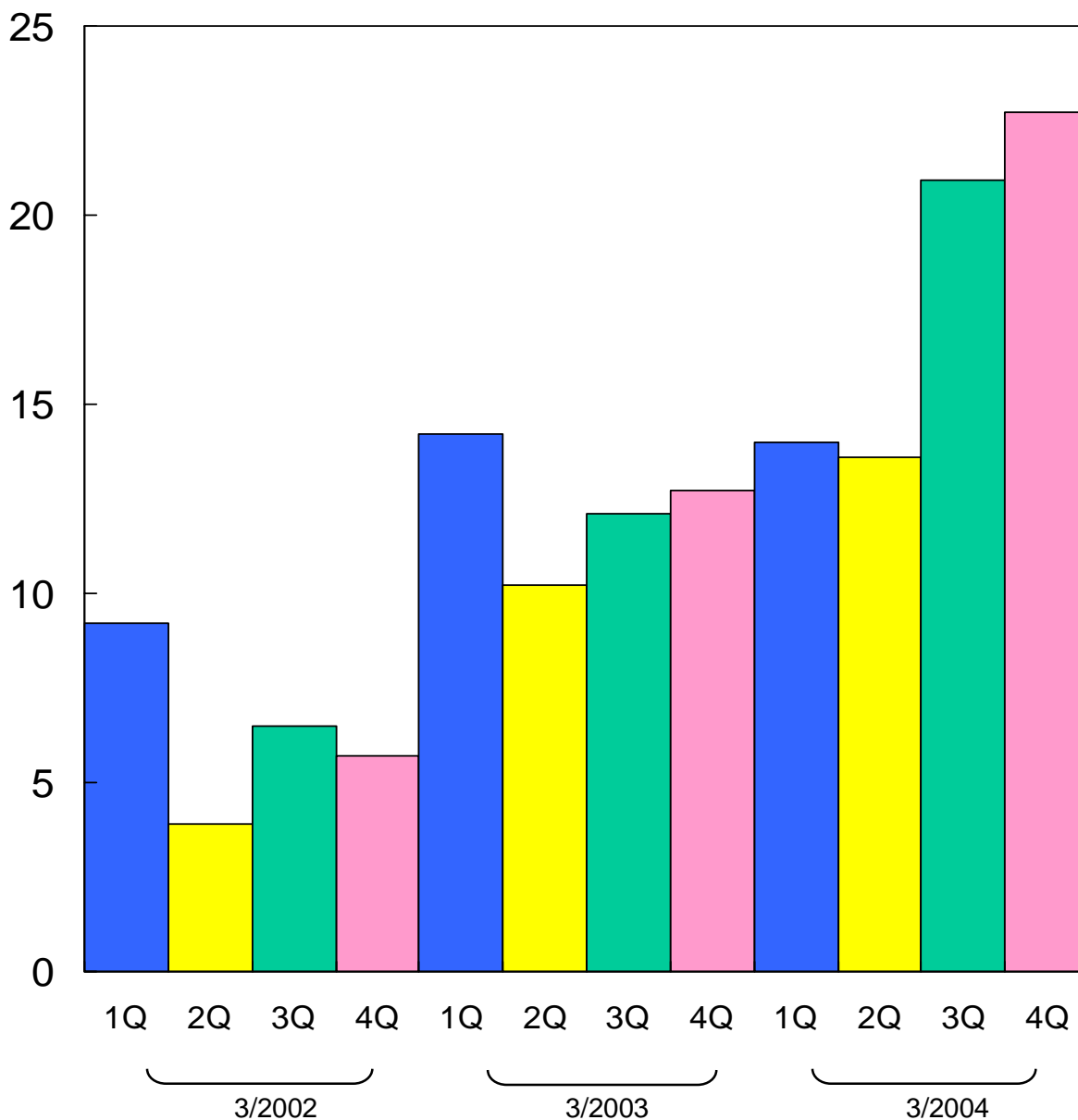
7. Quarterly Orders (Consolidated)



(Yen Million)

	3/2002	3/2003	3/2004
1Q	9,161	14,220	14,062
2Q	3,855	10,234	13,631
3Q	6,530	12,101	20,851
4Q	5,723	12,693	22,744

(Yen Billion)



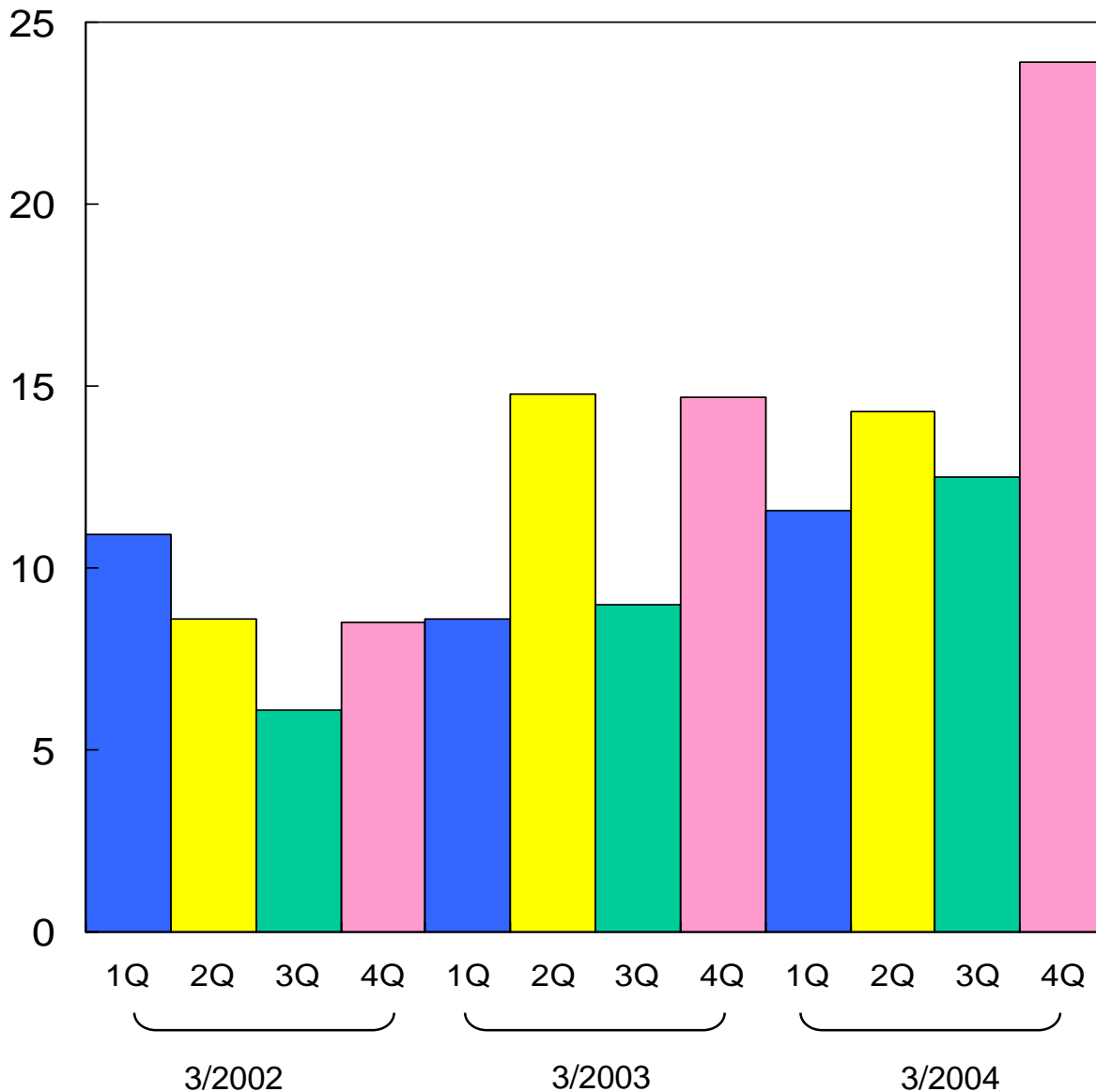
8. Quarterly Sales (Consolidated)



(Yen Million)

	3/2002	3/2003	3/2004
1Q	10,926	8,562	11,586
2Q	8,581	14,832	14,323
3Q	6,091	9,049	12,502
4Q	8,467	14,729	23,914

(Yen Billion)

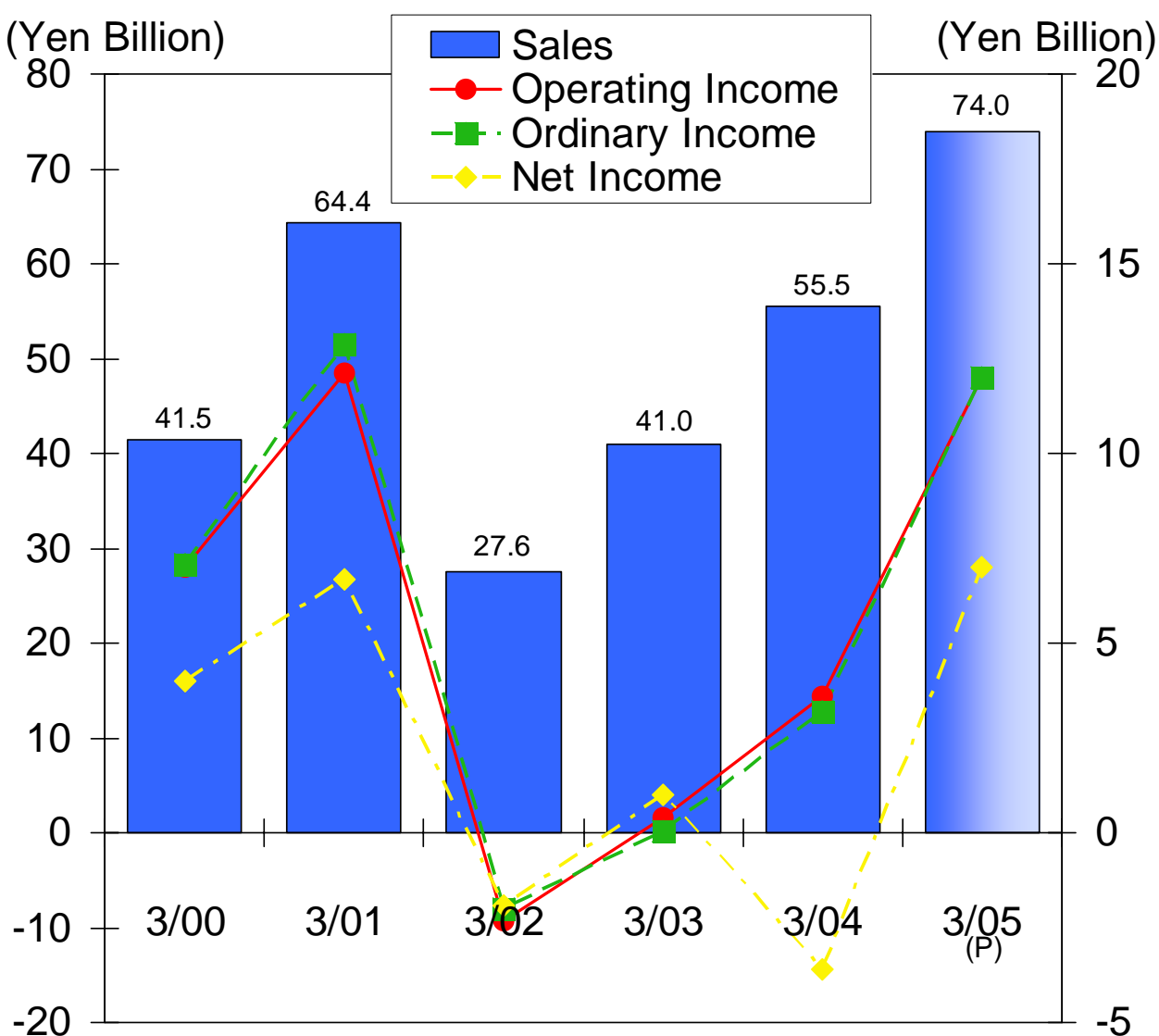


1. Operating Results (Non-Consolidated)



(Yen Million)

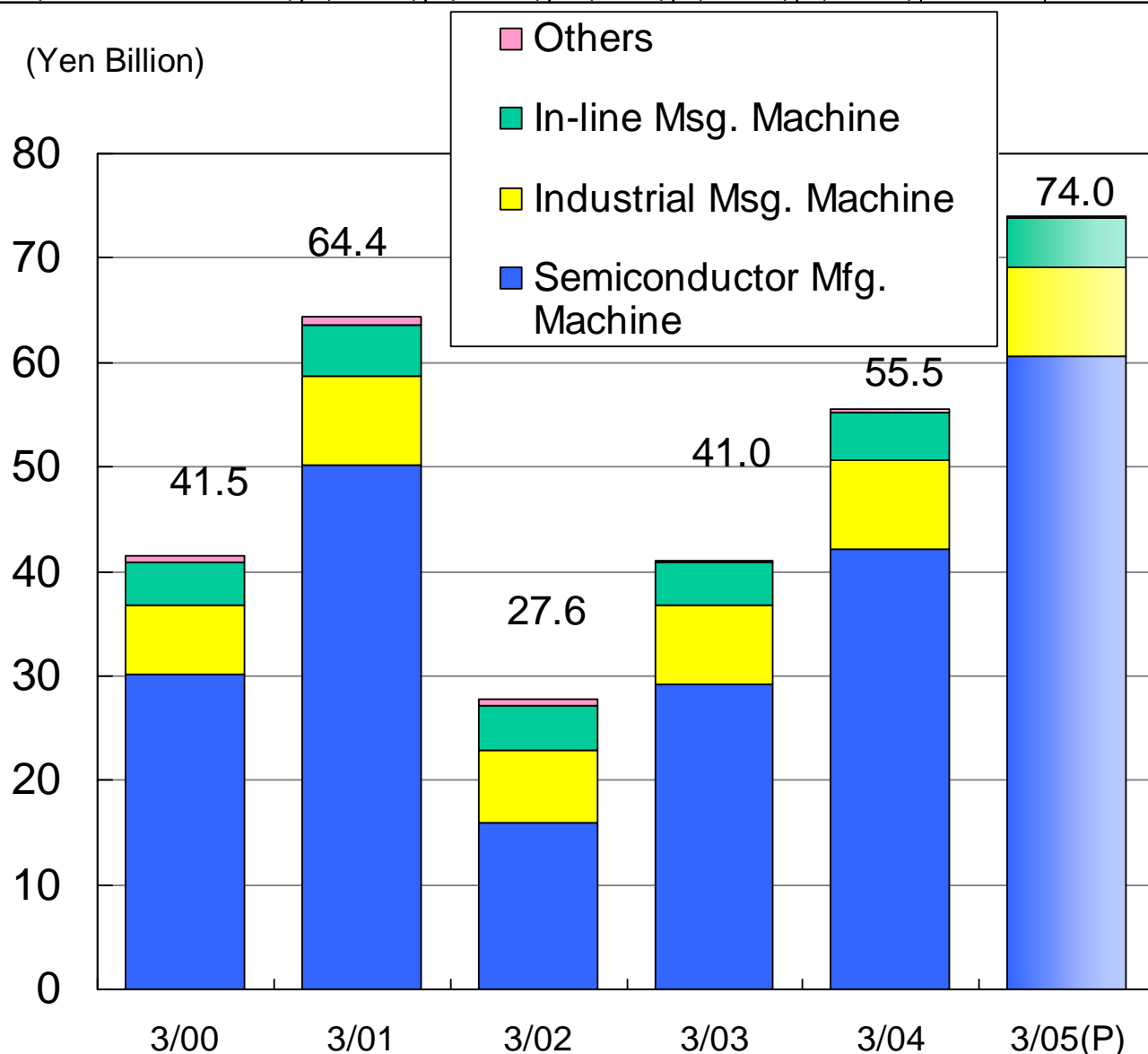
	3/00	3/01	3/02	3/03	3/04	Interim 9/04(P)	Full Year 3/05(P)
Sales	41,501	64,423	27,643	40,996	55,549	37,000	74,000
Operating Income	7,010	12,130	-2,304	406	3,616	6,000	12,000
Ordinary Income	7,069	12,942	-1,968	54	3,243	6,000	12,000
Net Income	4,010	6,688	-1,850	1,032	-3,592	3,500	7,000



2. Sales by Product Group (Non- Consolidated)



	3/00	3/01	3/02	3/03	3/04	Interim 9/04(P)	Full Year 3/05(P)
Semiconductor Mfg. Machine	30,166	50,121	15,897	29,154	42,114	30,300	60,600
(Overseas Sales)	(14,984)	(26,326)	(8,240)	(17,037)	(24,351)		
Industrial Measuring Machine	6,526	8,575	6,969	7,631	8,513	4,260	8,520
(Overseas Sales)	(725)	(1,125)	(1,083)	(1,446)	(1,487)		
In-line Measuring Machine	4,143	4,906	4,278	3,959	4,559	2,340	4,680
(Overseas Sales)	(261)	(398)	(283)	(256)	(242)		
Others	665	820	498	251	362	100	200
(Overseas Sales)	(43)	(47)	(43)	(28)	(17)		
Total	41,501	64,423	27,643	40,996	55,549	37,000	74,000
(Total Overseas Sales)	(16,015)	(27,896)	(9,651)	(18,768)	(26,097)		



3. Order Backlog (Non-Consolidated)

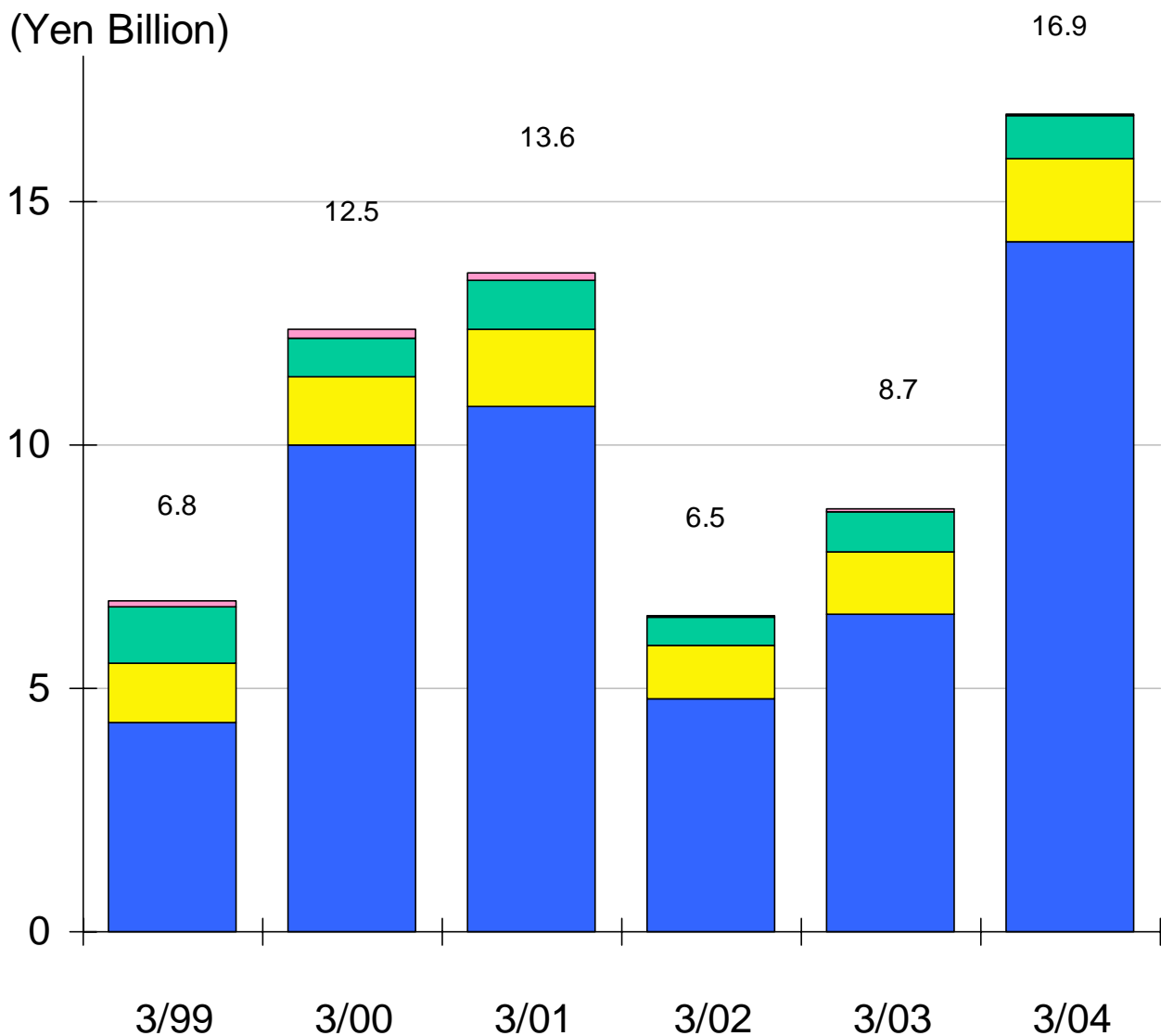


(Yen Million)

	3/1999	3/2000	3/2001	3/2002	3/2003	3/2004
Semiconductor Mfg. Machine	4,293	10,026	10,788	4,838	6,524	14,237
Industrial Measuring Machine	1,234	1,427	1,618	1,092	1,325	1,713
In-line Measuring Machine	1,153	843	996	576	806	875
Others	127	190	161	16	51	37
Total	6,808	12,487	13,564	6,523	8,708	16,863



(Yen Billion)



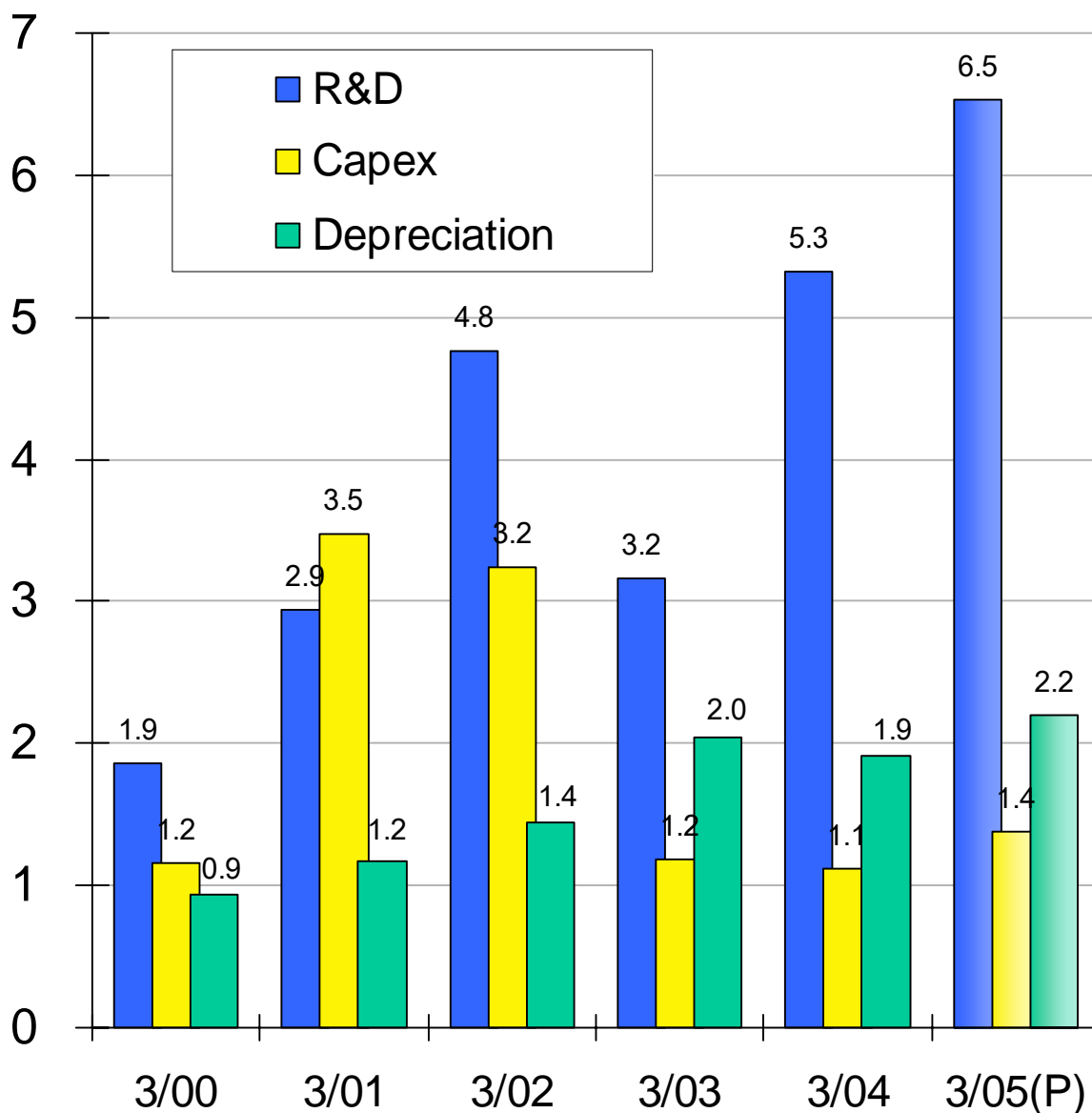
4. R&D, Capex & Depreciation (Non-Consolidated)



(yen Million)

	3/00	3/01	3/02	3/03	3/04	3/05(P)
R&D	1,866	2,941	4,758	3,156	5,321	6,533
Capex	1,153	3,470	3,242	1,186	1,124	1,376
Depreciation	937	1,174	1,441	2,042	1,907	2,198

(Yen Billion)

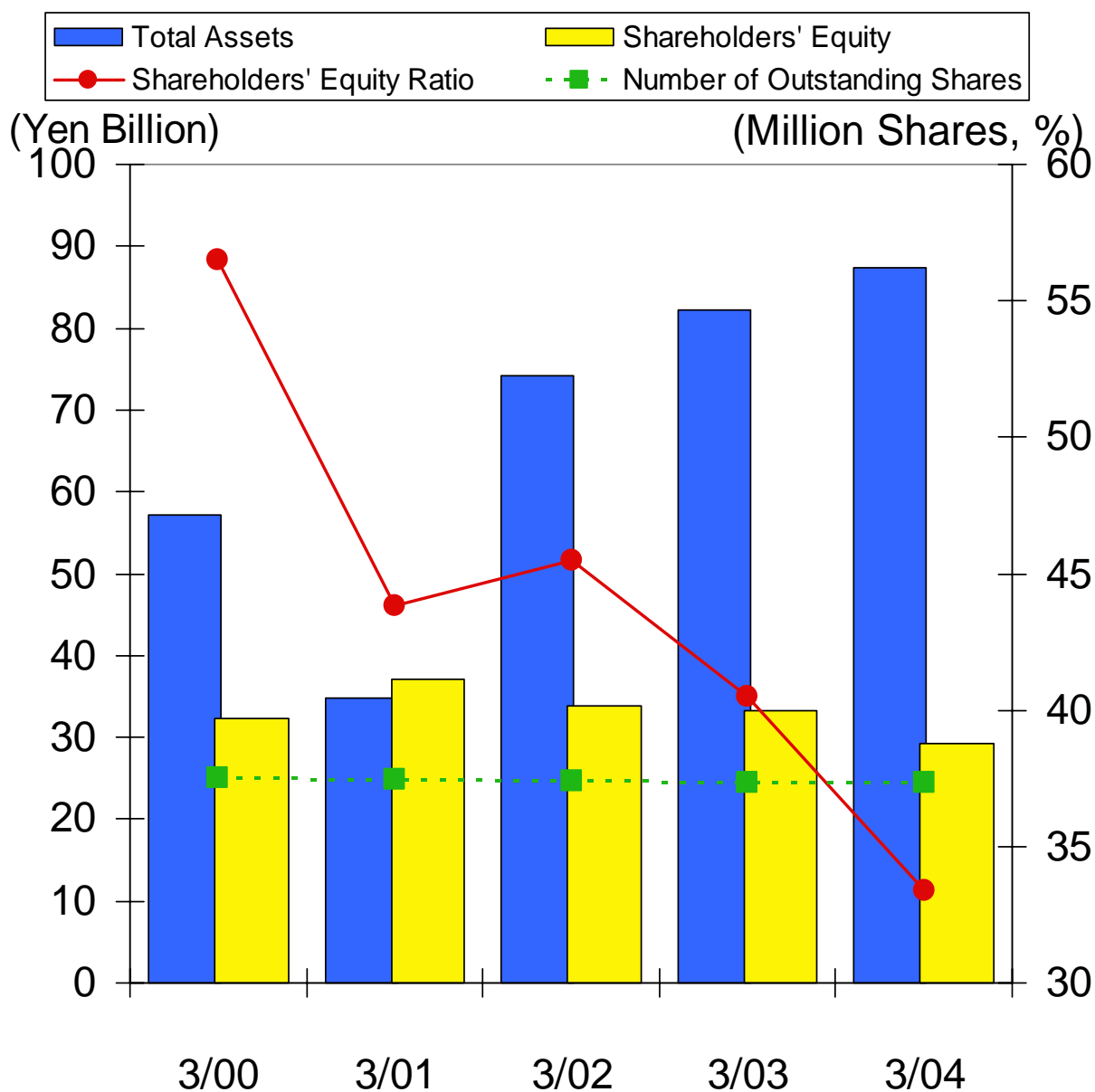


5. Balance Sheet (Non-Consolidated)



(Yen Million, Share)

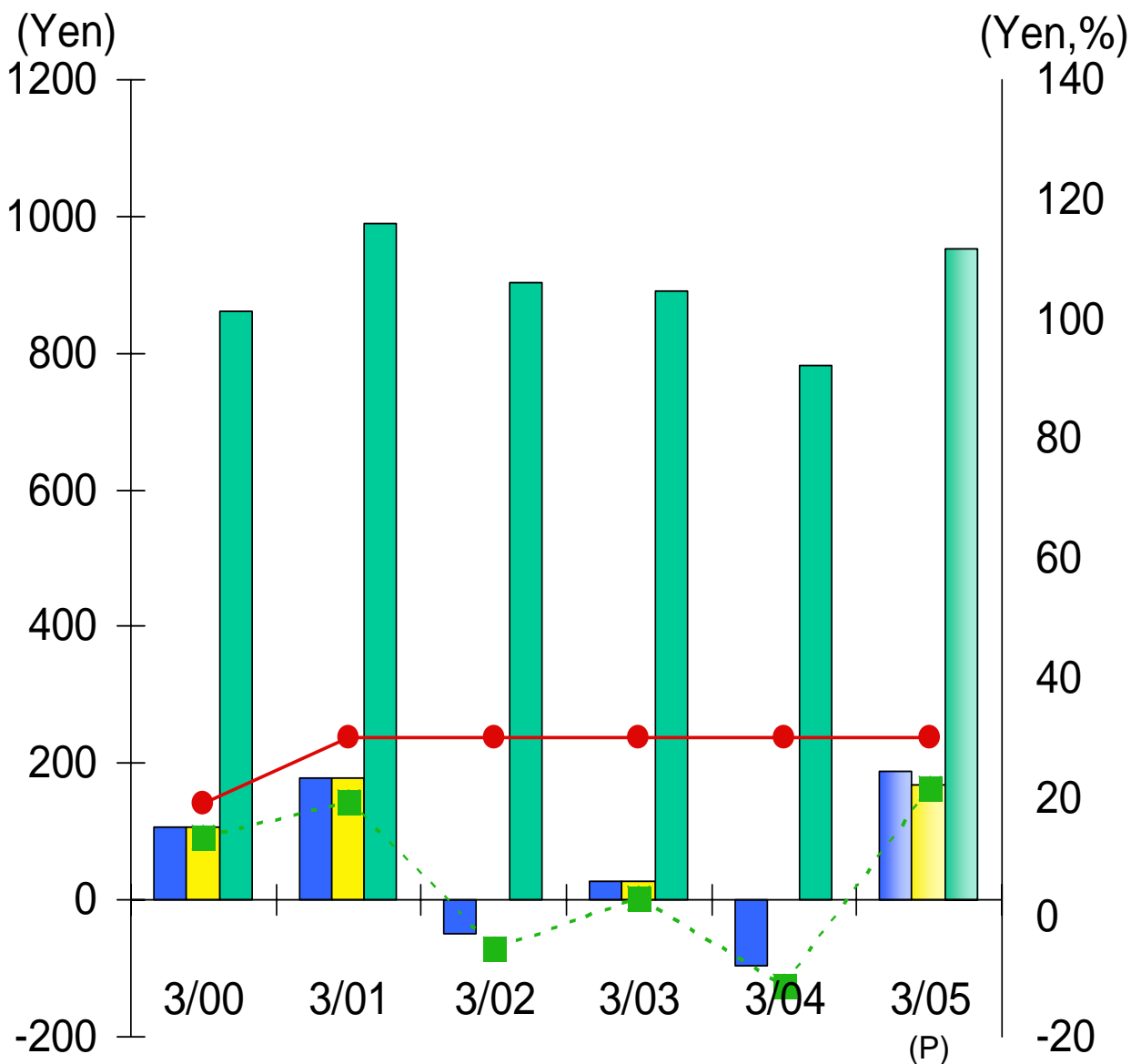
	3/2000	3/2001	3/2002	3/2003	3/2004
Total Assets	57,166	84,788	74,130	82,163	87,385
Shareholders' Equity	32,299	37,096	33,752	33,247	29,204
Number of Outstanding Shares	37,543,034	37,465,771	37,370,643	37,355,873	37,354,830
Shareholders' Equity Ratio	56.5%	43.8%	45.5%	40.5%	33.4%



6. Per Share indexes, & ROE (Non-Consolidated)



	3/2000	3/2001	3/2002	3/2003	3/2004	3/2005(P)
Number of Outstanding Shares	37,543,034	37,465,771	37,370,643	37,355,873	37,354,830	37,354,830
Net Income per Share	107.41	178.32	-49.50	27.63	-96.16	187.39
EPS after adjustment of unissued shares	106.98	177.64	-	27.59	-	169.50
Shareholders' Equity per Share	860.33	990.13	903.17	890.03	781.80	953.02
Dividend per Share	19	30	30	30	30	30
ROE(%)	13.3%	19.3%	-5.2%	3.1%	-11.5%	21.6%



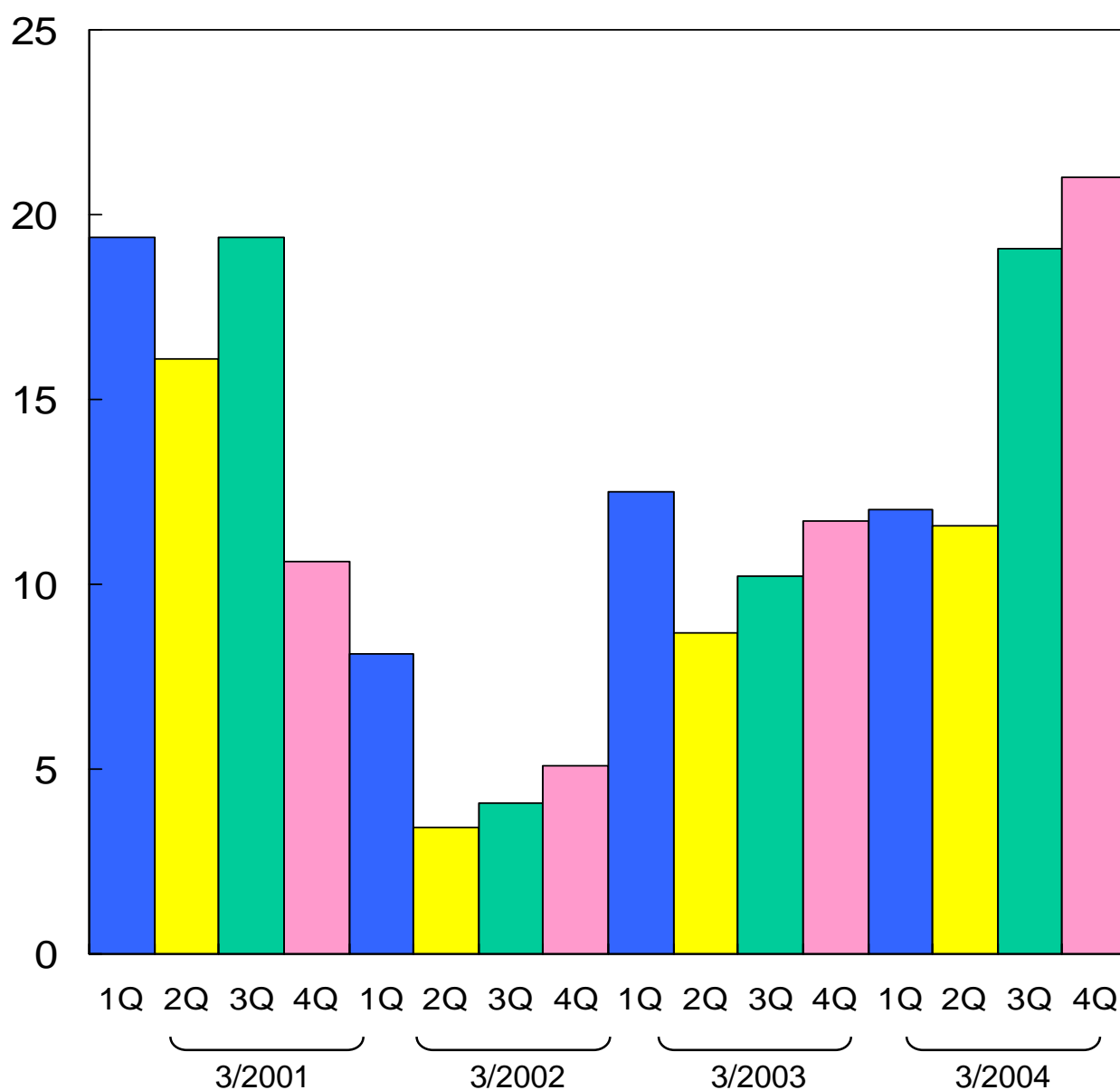
7. Quarterly Orders (Non-Consolidated)



(Yen Million)

	3/2001	3/2002	3/2003	3/2004
1Q	19,362	8,085	12,537	11,959
2Q	16,109	3,408	8,695	11,617
3Q	19,442	4,050	10,220	19,086
4Q	10,590	5,056	11,730	21,041

(Yen Billion)



8. Quarterly Sales (Non-Consolidated)



(Yen Million)

	3/2001	3/2002	3/2003	3/2004
1Q	12,472	9,070	6,673	10,417
2Q	18,590	7,106	12,877	12,688
3Q	14,614	4,490	7,706	10,692
4Q	18,928	6,977	13,741	21,752

(Yen Billion)

