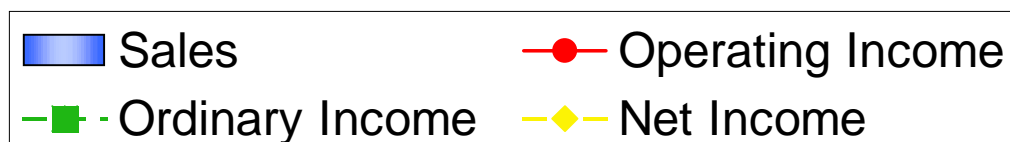
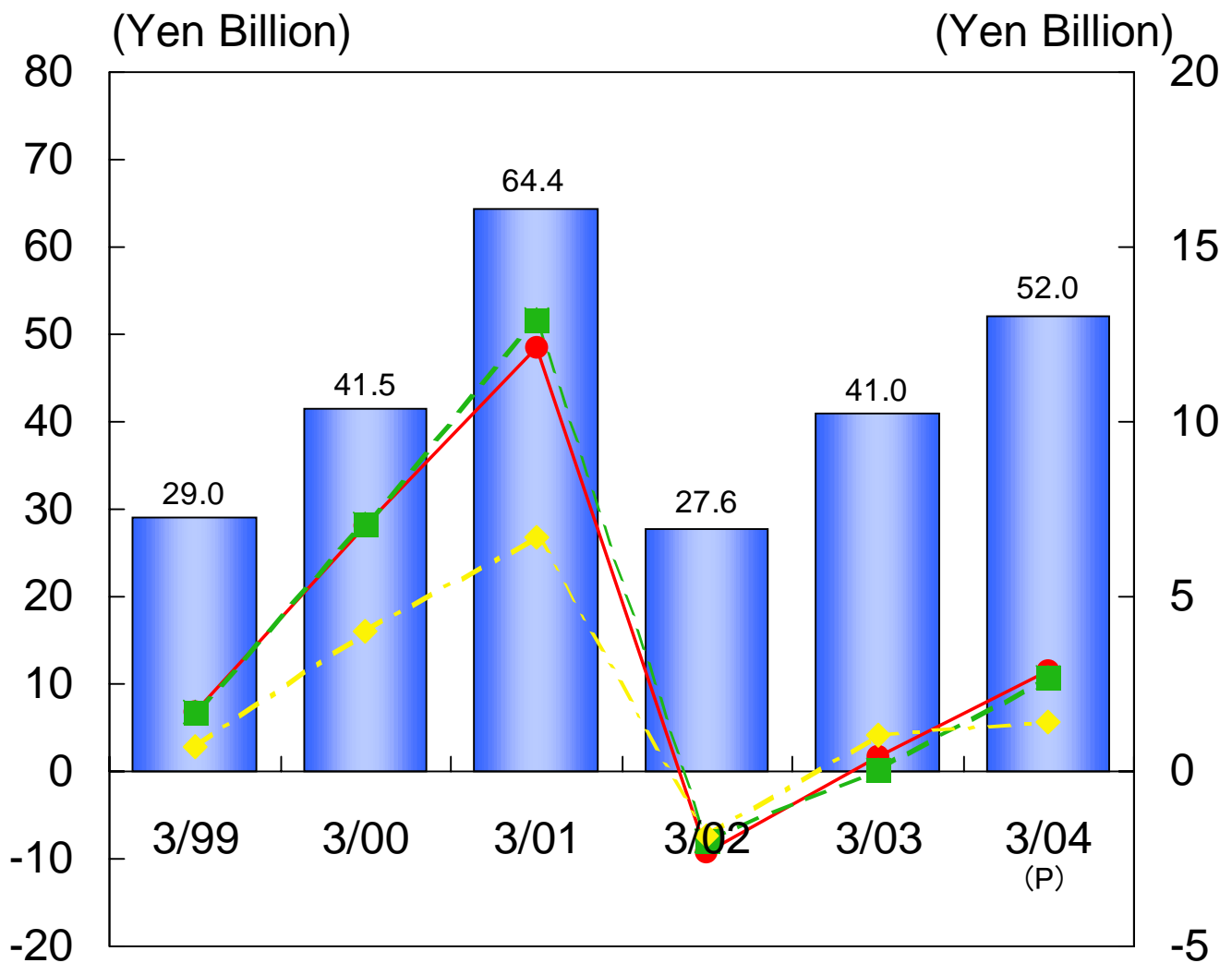


1. Operating Results (Non-Consolidated)



(Yen Million)

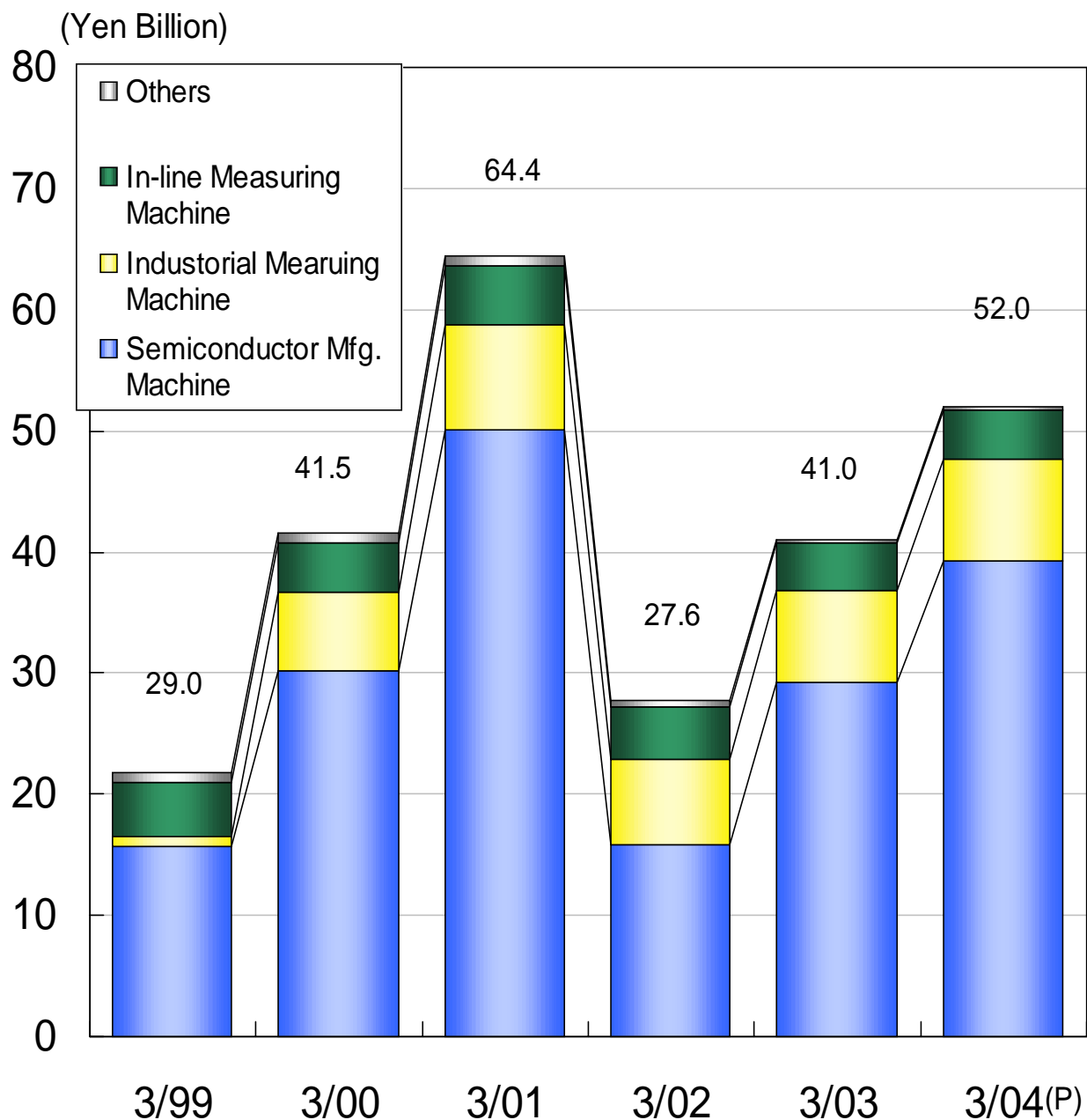
	3/1999	3/2000	3/2001	3/2002	3/2003	Interim 9/2003	Full year 3/2004(P)
Sales	29,024	41,501	64,423	27,643	40,996	23,104	52,000
Operating Income	1,697	7,010	12,130	-2,304	406	751	2,900
Ordinary Income	1,714	7,069	12,942	-1,968	54	649	2,700
Net Income	691	4,010	6,688	-1,850	1,032	432	1,400



2. Sales by Product Group (Non-Consolidated)



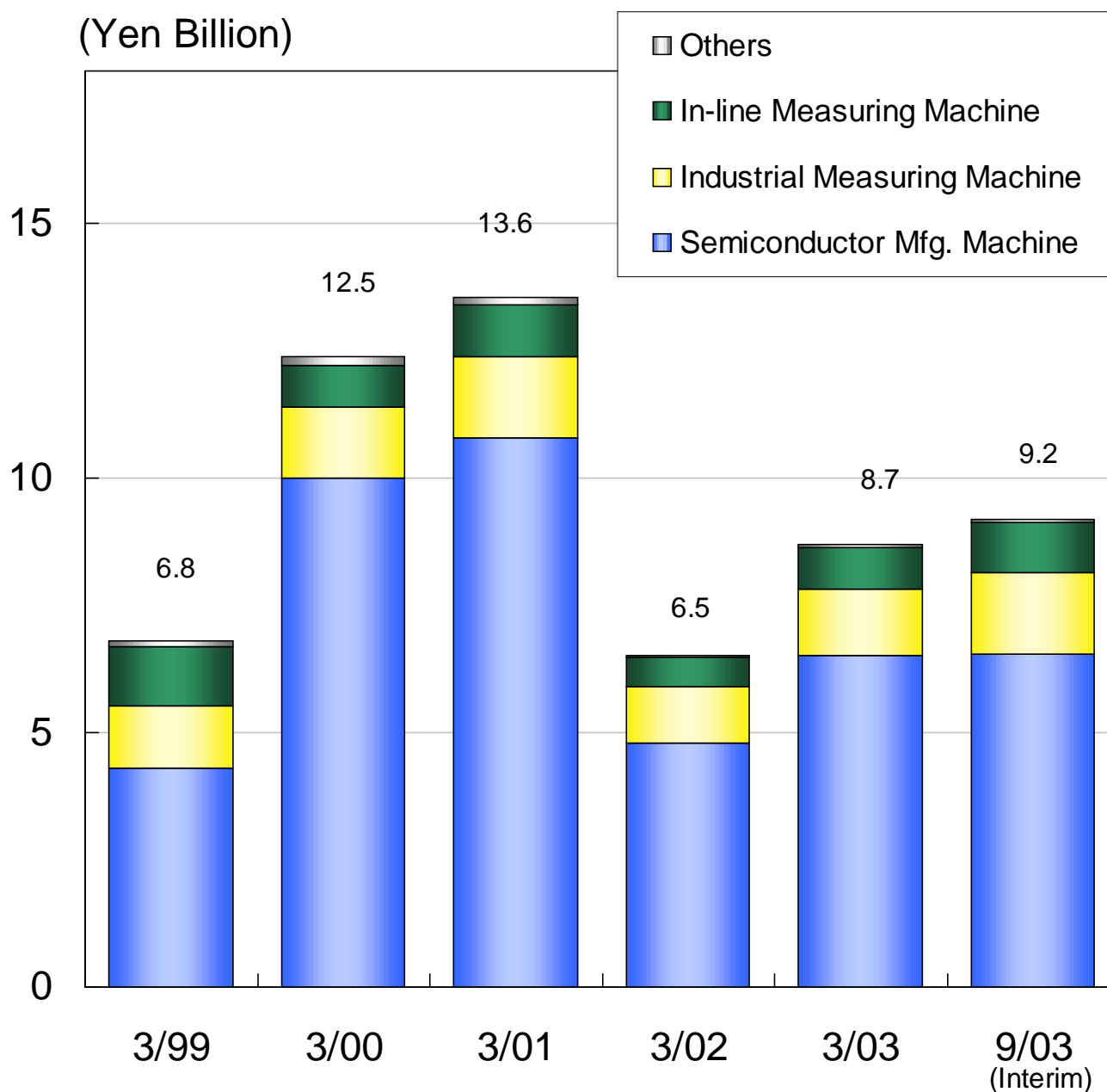
	3/1999	3/2000	3/2001	3/2002	3/2003	9/2003	3/2004(P)
Semiconductor Mfg. Machine	15,699	30,166	50,121	15,897	29,154	16,762	39,200
(Overseas Sales)	(8,178)	(14,984)	(26,326)	(8,240)	(17,037)	(7,934)	-
Industrial Measuring Machine	8,030	6,526	8,575	6,969	7,631	4,164	8,400
(Overseas Sales)	(1,033)	(725)	(1,125)	(1,083)	(1,446)	(725)	-
In-line Measuring Machine	4,478	4,143	4,906	4,278	3,959	1,999	4,100
(Overseas Sales)	(195)	(261)	(398)	(283)	(256)	(95)	-
Others	816	665	820	498	251	178	300
(Overseas Sales)	(201)	(43)	(47)	(43)	(28)	(9)	-
Total	29,024	41,501	64,423	27,643	40,996	23,104	52,000
(Total Overseas Sales)	(9,608)	(16,015)	(27,896)	(9,651)	(18,768)	(8,764)	-



3. Order Backlog (Non-Consolidated)



	3/1999	3/2000	3/2001	3/2002	3/2003	9/2003
Semiconductor Mfg. Machine	4,293	10,026	10,788	4,838	6,524	6,533
Industrial Measuring Machine	1,234	1,427	1,618	1,092	1,325	1,591
In-line Measuring Machine	1,153	843	996	576	806	993
Others	127	190	161	16	51	61
Total	6,808	12,487	13,564	6,523	8,708	9,178

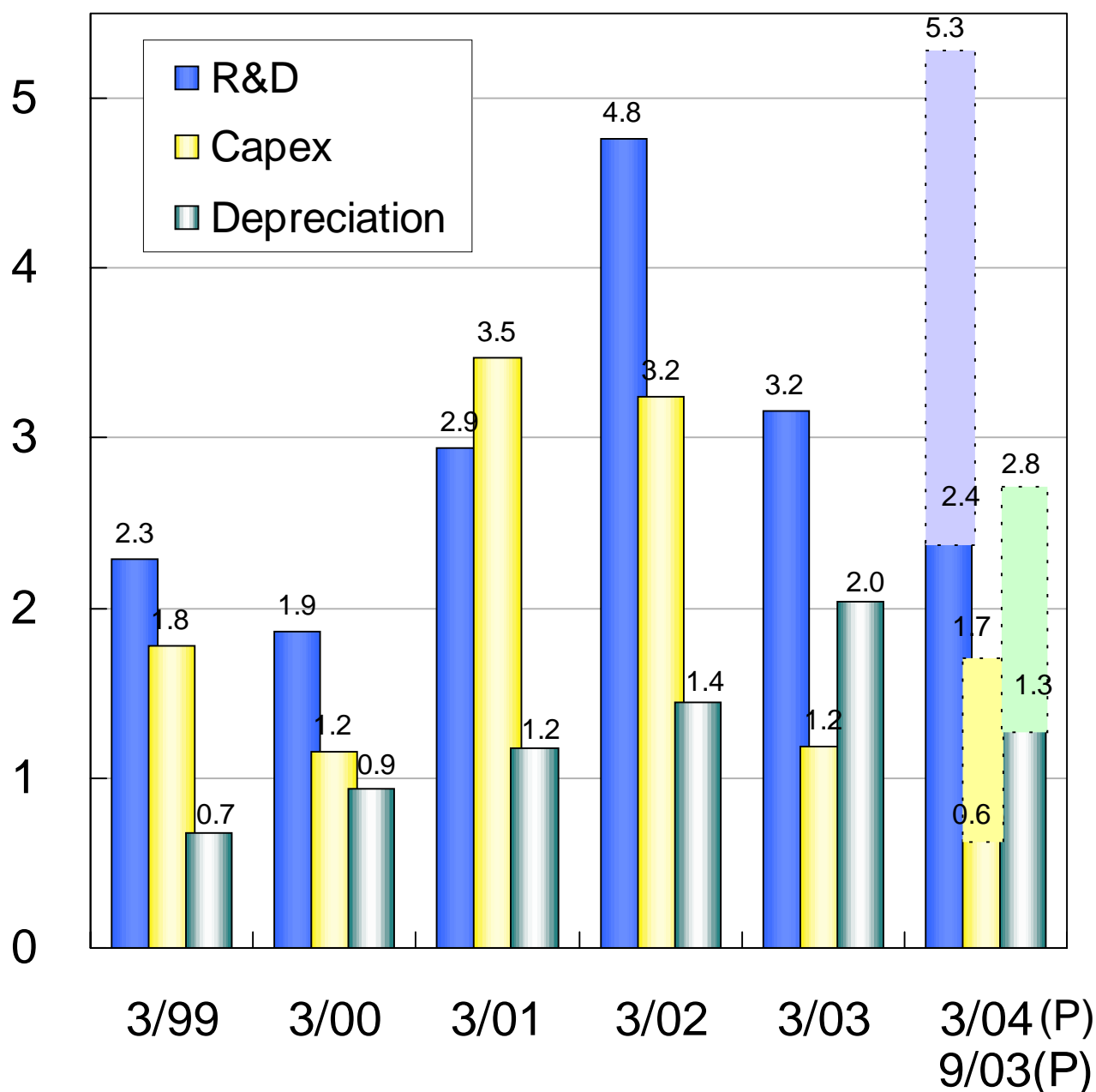


4. R&D, Capex and Depreciation (Non-consolidated)



	3/1999	3/2000	3/2001	3/2002	3/2003	Interim 9/2003	Full year (Yen Million) 3/2004(P)
R&D	2,285	1,866	2,941	4,758	3,156	2,392	5,282
Capex	1,780	1,153	3,470	3,242	1,186	638	1,658
Depreciation	673	937	1,174	1,441	2,042	1,291	2,774

(Yen Billion)



5. Balance Sheet (Non-Consolidated)



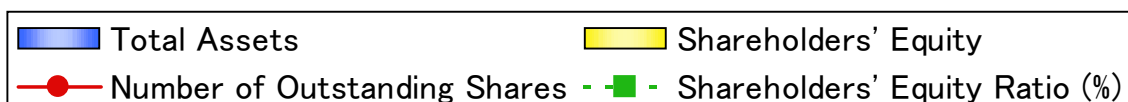
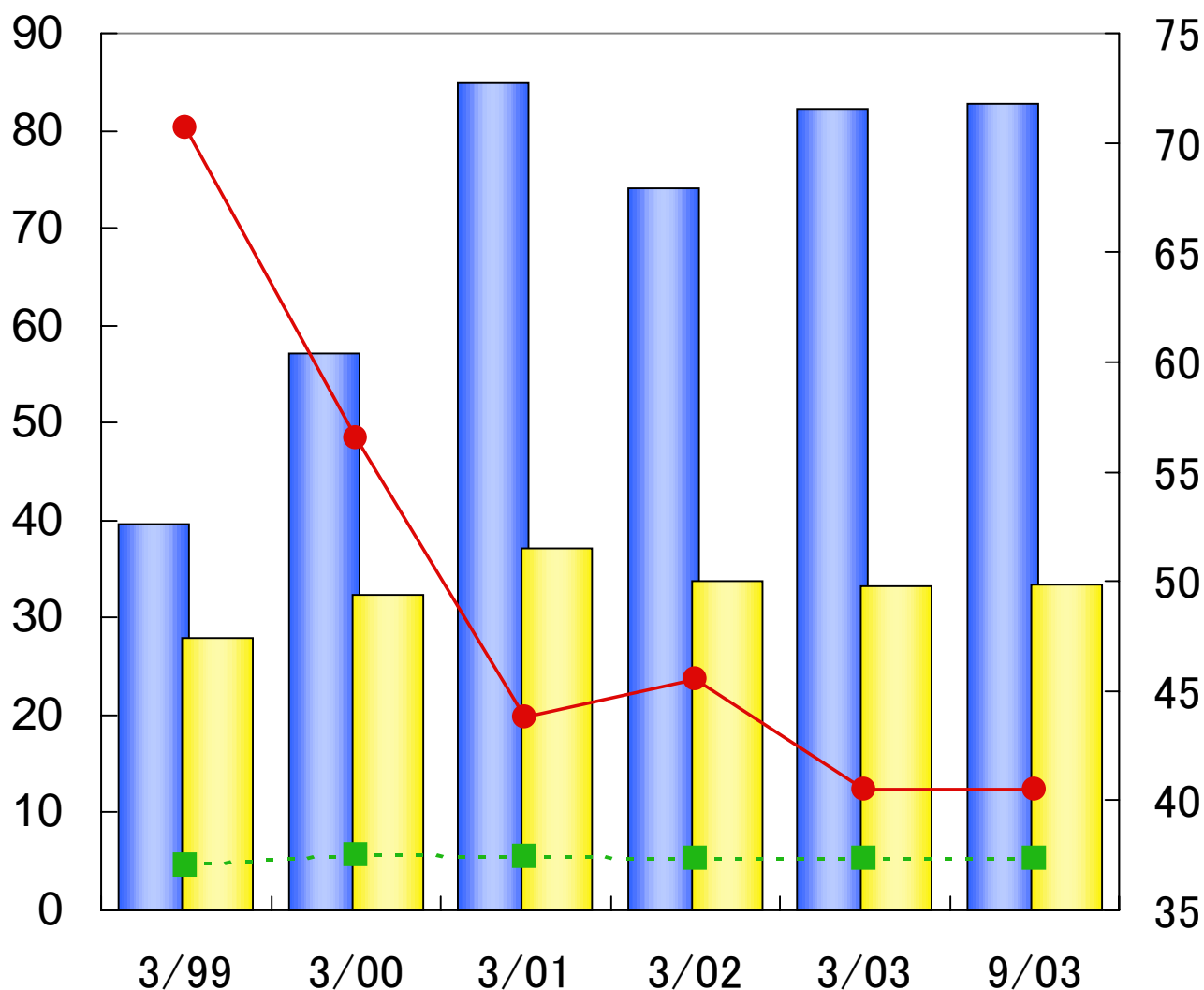
(Yen Million, Share)

Interim

	3/1999	3/2000	3/2001	3/2002	3/2003	3/2009
Total Assets	39,551	57,166	84,788	74,130	82,163	82,807
Shareholders' Equity	27,952	32,299	37,096	33,752	33,247	33,543
Number of Outstanding Shares	37,004,490	37,543,034	37,465,771	37,370,643	37,355,873	37,355,311
Shareholders' Equity Ratio	70.7%	56.5%	43.8%	45.5%	40.5%	40.5%

(Yen Billion)

(Million Share, %)



6. Per Share Indexes, and ROE (Non-Consolidated)



	(Share, Yen)						
						Interim	Full Year
	3/1999	3/2000	3/2001	3/2002	3/2003	9/2003	3/2004(P)
Number of outstanding Shares	37,004,490	37,543,034	37,465,771	37,370,643	37,355,873	37,355,311	37,355,311
Net Income per Share	18.74	107.41	178.32	-49.50	27.63	11.57	37.48
EPS after Adjustment of Unissued Shares	18.49	106.98	177.64	-	27.59	11.55	35.84
Shareholders' Equity per Share	755.38	860.33	990.13	903.17	890.03	897.95	920.42
Dividend per Share	13+6*	19	30	30	30	15(Interim)	30
ROE (%)	2.5%	13.3%	19.3%	-5.2%	3.1%	2.6%	4.2%

*memorial dividend

